



## 2410 Woodlake Drive

Okemos, Michigan 48864

### Property Highlights

- Up to 5,153 SF of office immediately available
- Suite 420: 3,023 SF immediately available
- Suite 440: 2,130 SF immediately available
- Close proximity to dining, hotels, and shopping
- Immediate access to Okemos Rd Interchange (Exit 110) of Interstate 96

### Offering Summary

Lease Rate:	\$14.00 SF/yr (MG)
Building Size:	5,454 SF
Available SF:	2,130 - 5,153 SF

### For More Information

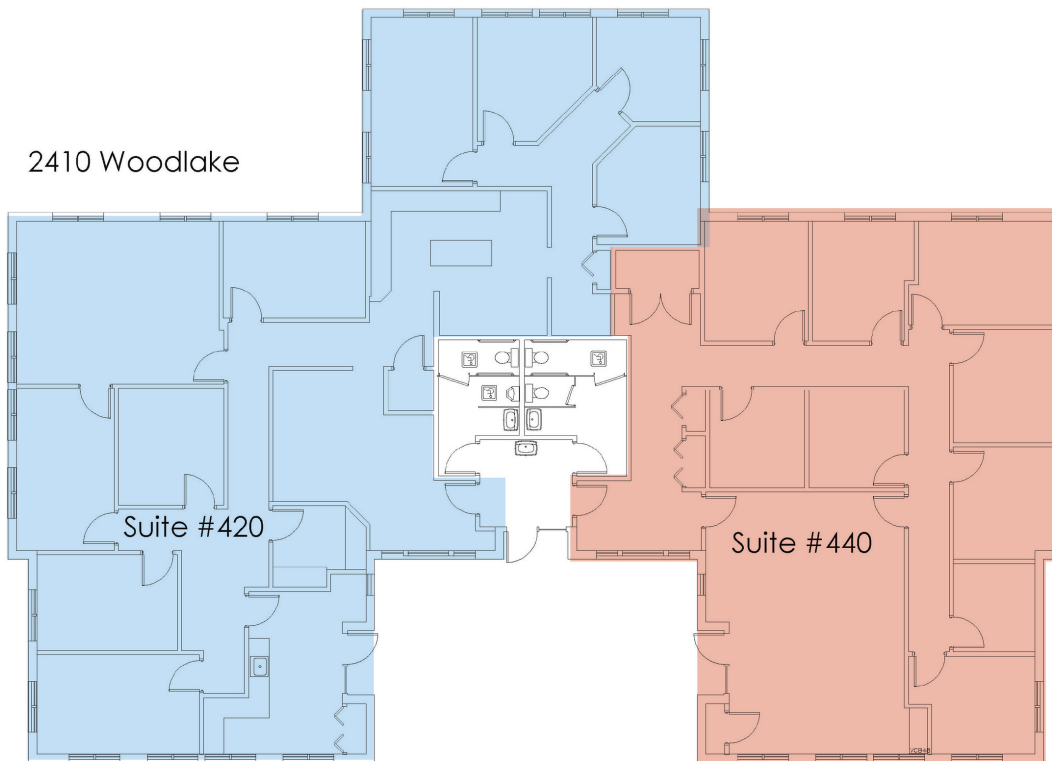


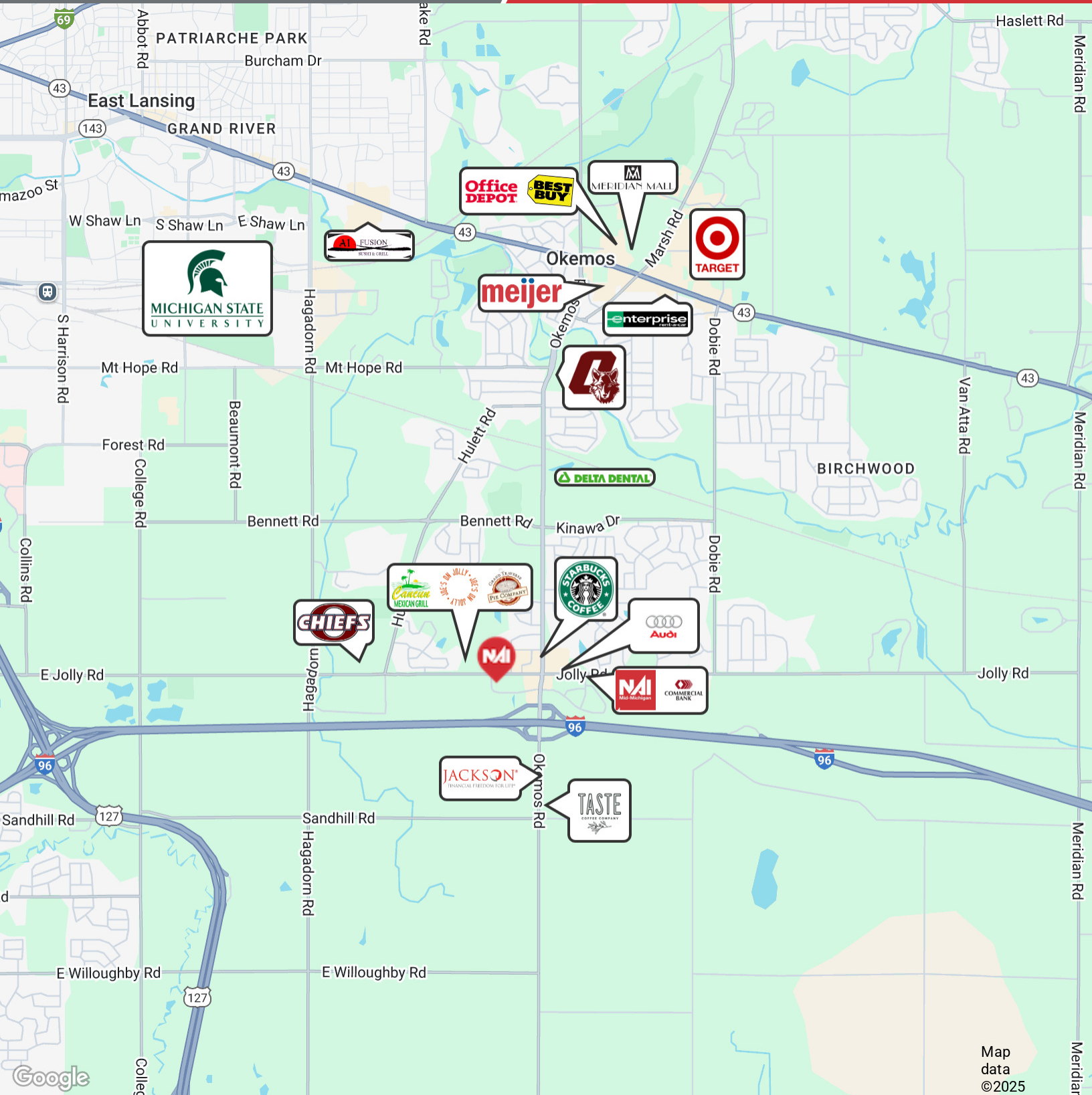
#### Jeffrey Branch

Associate Broker

O: 517 487 9222 | C: 517 899 6368

[jbranch@naimidmichigan.com](mailto:jbranch@naimidmichigan.com)

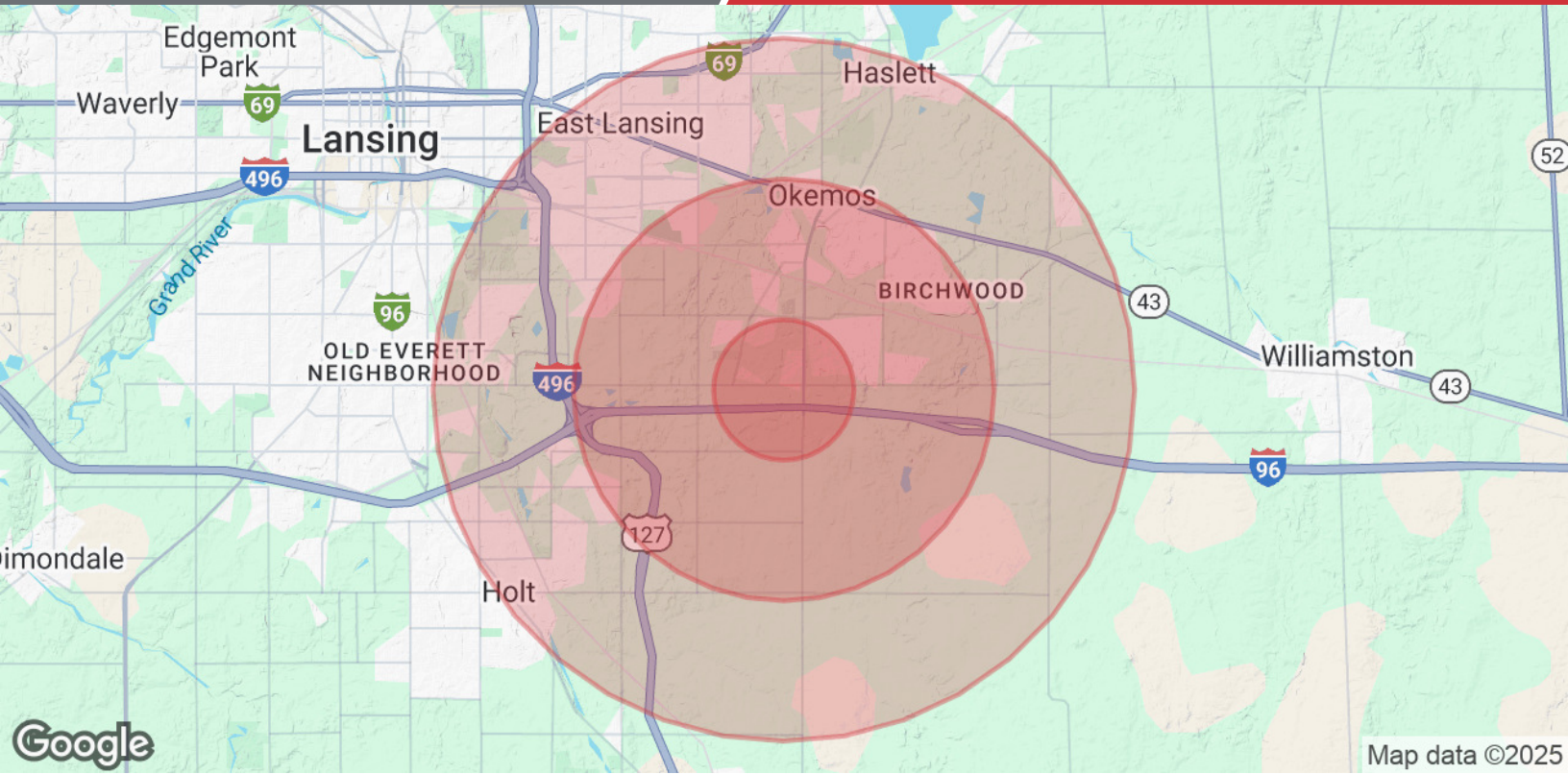




Map data ©2025

NO WARRANTY OR REPRESENTATION, EXPRESS OR IMPLIED, IS MADE AS TO THE ACCURACY OF THE INFORMATION CONTAINED HEREIN, AND THE SAME IS SUBMITTED SUBJECT TO ERRORS, OMISSIONS, CHANGE OF PRICE, RENTAL OR OTHER CONDITIONS, PRIOR SALE, LEASE OR FINANCING, OR WITHDRAWAL WITHOUT NOTICE, AND OF ANY SPECIAL LISTING CONDITIONS IMPOSED BY OUR PRINCIPALS NO WARRANTIES OR REPRESENTATIONS ARE MADE AS TO THE CONDITION OF THE PROPERTY OR ANY HAZARDS CONTAINED THEREIN ARE INTENDED TO BE IMPLIED

2149 Jolly Road, Suite 200  
Okemos, MI 48864  
517 487 9222 tel  
naimidmichigan.com



### Population

	1 Mile	3 Miles	5 Miles
Total Population	4,583	22,308	94,925
Average Age	38	39	34
Average Age (Male)	37	38	34
Average Age (Female)	38	40	35

### Households & Income

	1 Mile	3 Miles	5 Miles
Total Households	1,783	8,901	35,026
# of Persons per HH	2.6	2.5	2.7
Average HH Income	\$132,343	\$129,636	\$94,024
Average House Value	\$404,134	\$366,206	\$252,435

Demographics data derived from AlphaMap