

FOR LEASE

Eastport Industrial Park
8935 MARKET STREET
Houston, Texas 77029

Owned and Operated by

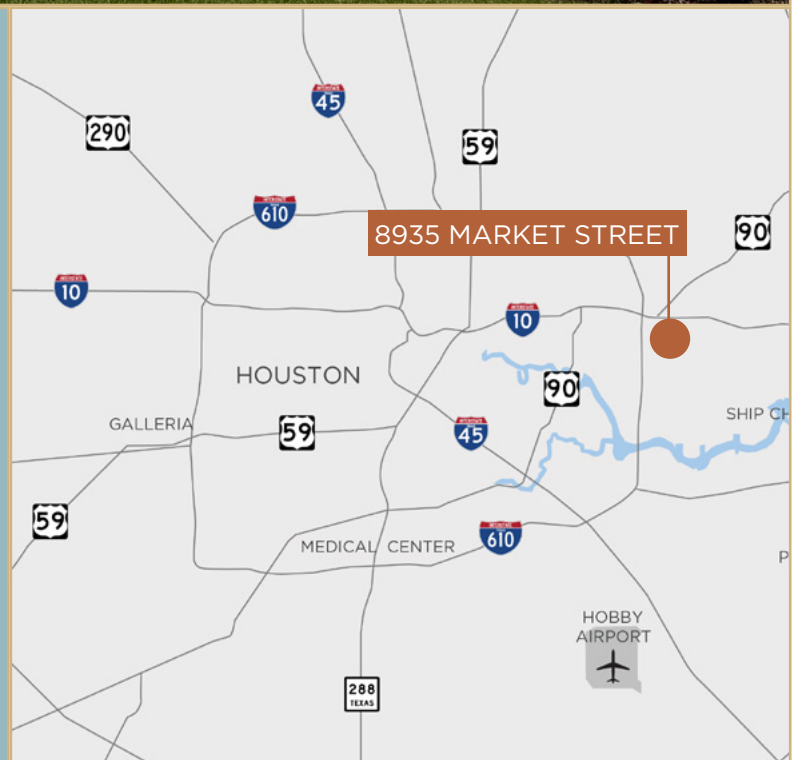


±19,774 SF



SPACE SPECIFICATIONS

Address:	8935 Market Street, Houston, Texas 77029
Suite Size:	±19,774 SF
Office:	±3,568 SF
Warehouse:	±16,206 SF
Truck Loading:	(3) Dock High Loading Doors (1) Drive-in Ramp
Clear Height:	24'
Sprinkler System:	Wet
Power:	400 Amp / 300 Volt / 3 Phase
Available:	April 2026



CONTACT INFO

JOHN KRUSE | Managing Director | +1 713 304 4919 | john.kruse@cushwake.com

KELLY A. LANDWERMEYER | Managing Director | +1 713 249 4295 | kelly.landwermeier@cushwake.com

1330 Post Oak Boulevard | Suite 2700 | Houston, TX 77056 | PH: +1 713 877 1700 | cushmanwakefield.com



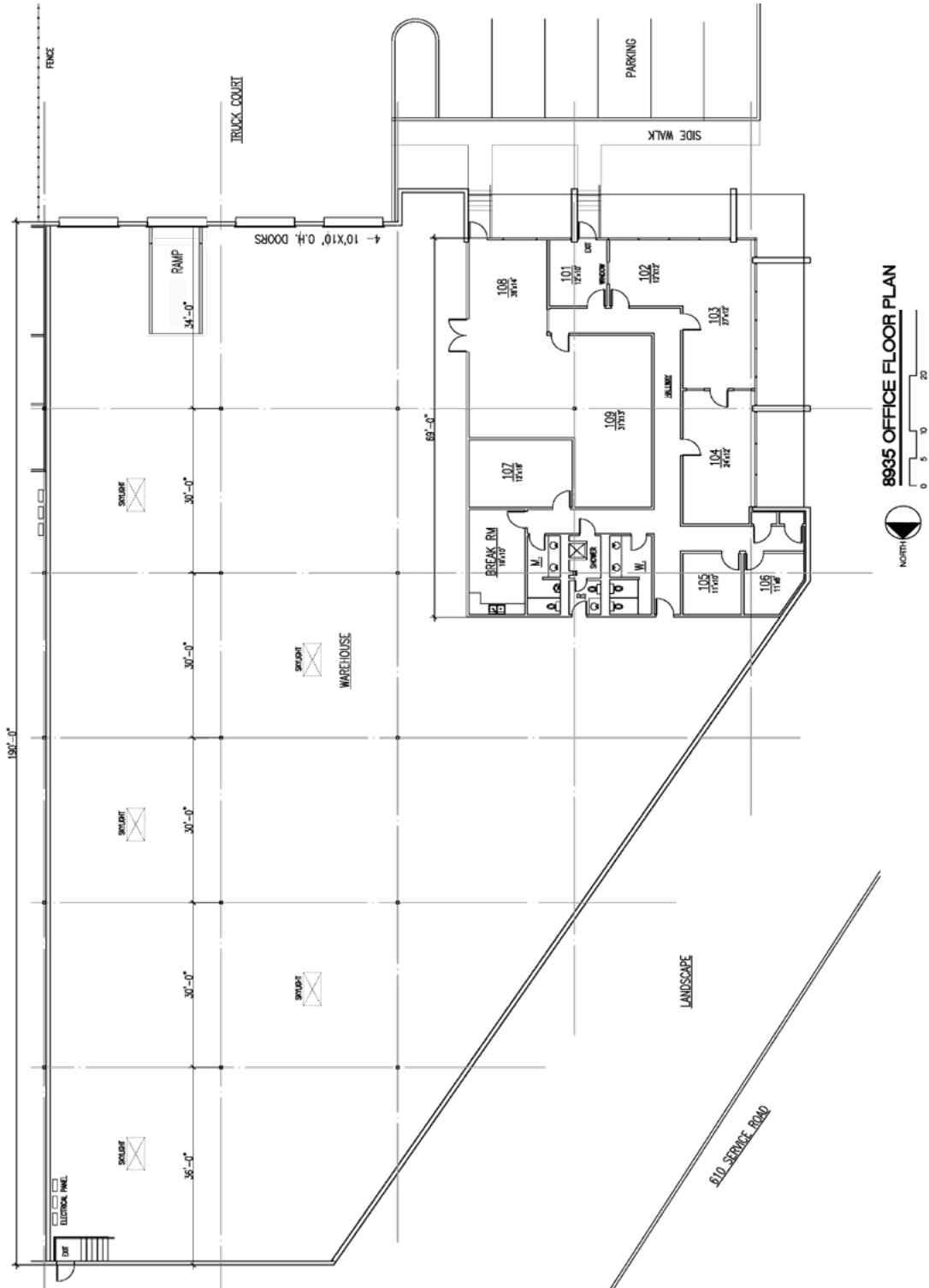
FOR LEASE

Eastport Industrial Park
8935 MARKET STREET
Houston, Texas 77029

Owned and Operated by



Floor Plan



FOR LEASE

Eastport Industrial Park
8935 MARKET STREET
Houston, Texas 77029

Owned and Operated by



Aerial Map



©2024 CUSHMAN & WAKEFIELD. ALL RIGHTS RESERVED. THE INFORMATION CONTAINED IN THIS COMMUNICATION IS STRICTLY CONFIDENTIAL. THIS INFORMATION HAS BEEN OBTAINED FROM SOURCES BELIEVED TO BE RELIABLE BUT HAS NOT BEEN VERIFIED. NO WARRANTY OR REPRESENTATION, EXPRESS OR IMPLIED, IS MADE AS TO THE CONDITION OF THE PROPERTY (OR PROPERTIES) REFERENCED HEREIN OR AS TO THE ACCURACY OR COMPLETENESS OF THE INFORMATION CONTAINED HEREIN, AND SAME IS SUBMITTED SUBJECT TO ERRORS, OMISSIONS, CHANGE OF PRICE, RENTAL OR OTHER CONDITIONS, WITHDRAWAL WITHOUT NOTICE, AND TO ANY SPECIAL LISTING CONDITIONS IMPOSED BY THE PROPERTY OWNER(S). ANY PROJECTIONS, OPINIONS OR ESTIMATES ARE SUBJECT TO UNCERTAINTY AND DO NOT SIGNIFY CURRENT OR FUTURE PROPERTY PERFORMANCE.