

Industrial Space For Sublease

2500 W 4TH AVENUE UNIT #7, DENVER, COLORADO 80219



Overview

Positioned in Denver's thriving industrial corridor, Unit 7 at 2500 W 4th Avenue offers an exceptional blend of warehouse functionality and office build-out. This end-cap unit features flexible layout options, and convenient access for distribution or service-based operations.

The space includes several private offices, a large open warehouse with high ceilings, and a dock-high loading door for efficient shipping and receiving. With its versatile configuration and visibility within a wellmaintained industrial complex, this unit is ideal for businesses seeking a strategic location close to major thoroughfares such as I-25, 6th Avenue, and Santa Fe Drive.


Whether you're a light industrial user, service contractor, or growing distribution business, Unit 7 provides the functionality and accessibility needed to support daily operations and future growth.

6,000 SF x \$11.14 SF/YR (+ \$4.81 SF/YR NNN) = \$7,974.09/Month

Highlights

- Sublease through August 31, 2029
- High Ceilings
- Dock High Door
- End Cap Unit
- Central Denver Location

Property Details

 **Lease Rate**
\$11.14 SF/YR
(+ \$4.81 NNN)

 **Space Available**
6,000 SF

 **Zoning**
I-A

Rev: October 30, 2025



Industrial Space For Sublease

2500 W 4TH AVENUE UNIT #7, DENVER, COLORADO 80219



Rev: October 30, 2025



Our Network Is Your Edge

All information is from sources deemed reliable and is subject to errors, omissions, change of price, rental, prior sale, and withdrawal without notice. Prospect should carefully verify each item of information contained herein.



Brandon Langiewicz, SIOR

C: 715.512.0265

O: 720.572.5187

Brandon@HoffLeigh.com

Claire Hertel

C: 303.506.2918

O: 720.572.5187

CHertel@HoffLeigh.com

Industrial Space For Sublease

2500 W 4TH AVENUE UNIT #7, DENVER, COLORADO 80219



Rev: October 30, 2025



Industrial Space For Sublease

2500 W 4TH AVENUE UNIT #7, DENVER, COLORADO 80219

DEMOGRAPHICS



252,659
Population



34.0
Median Age



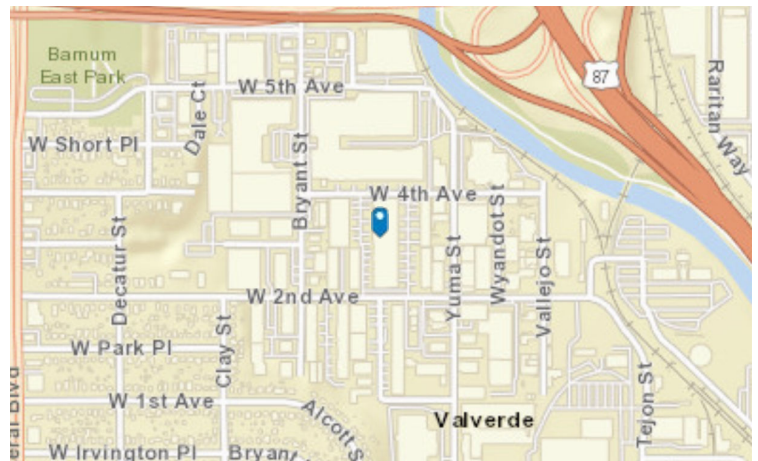
2.0
Average Household Size



\$92,330
Median Household Income

TRAFFIC COUNT

Nearest Cross Street	VPD	Distance (mi)
W 2nd Ave	10,142	0.1
W 3rd Ave	7,673	0.1
W 4th Ave	9,223	0.1
Clay St	4,200	0.2
W 4th Ave	28,352	0.3



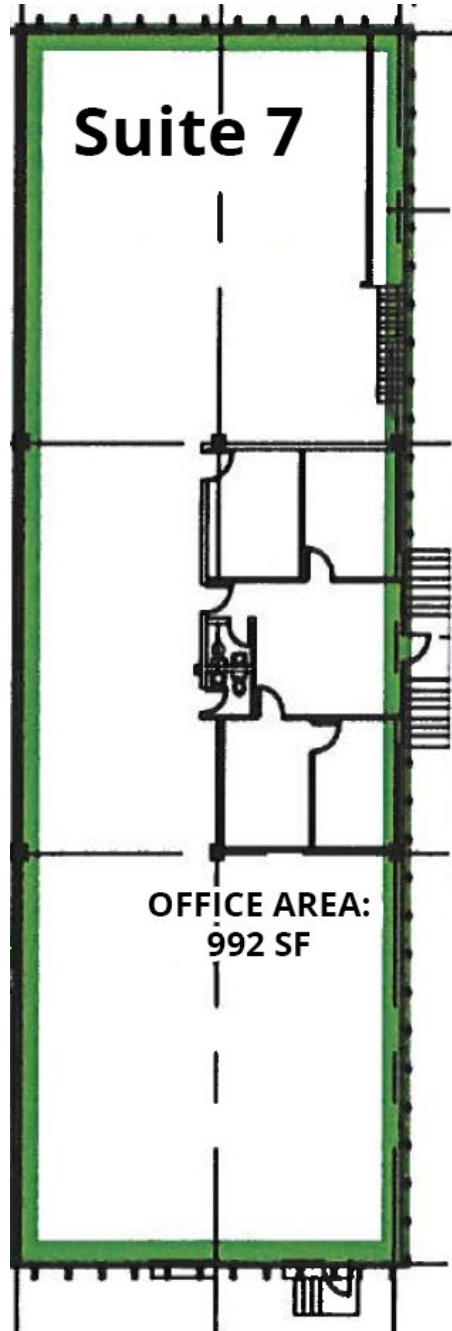
Rev: October 30, 2025



Industrial Space For Sublease

2500 W 4TH AVENUE UNIT #7, DENVER, COLORADO 80219

FLOOR PLAN



Rev: October 30, 2025

Our Network Is Your Edge



All information is from sources deemed reliable and is subject to errors, omissions, change of price, rental, prior sale, and withdrawal without notice. Prospect should carefully verify each item of information contained herein.



Brandon Langiewicz, SIOR

C: 715.512.0265

O: 720.572.5187

Brandon@HoffLeigh.com

Claire Hertel

C: 303.506.2918

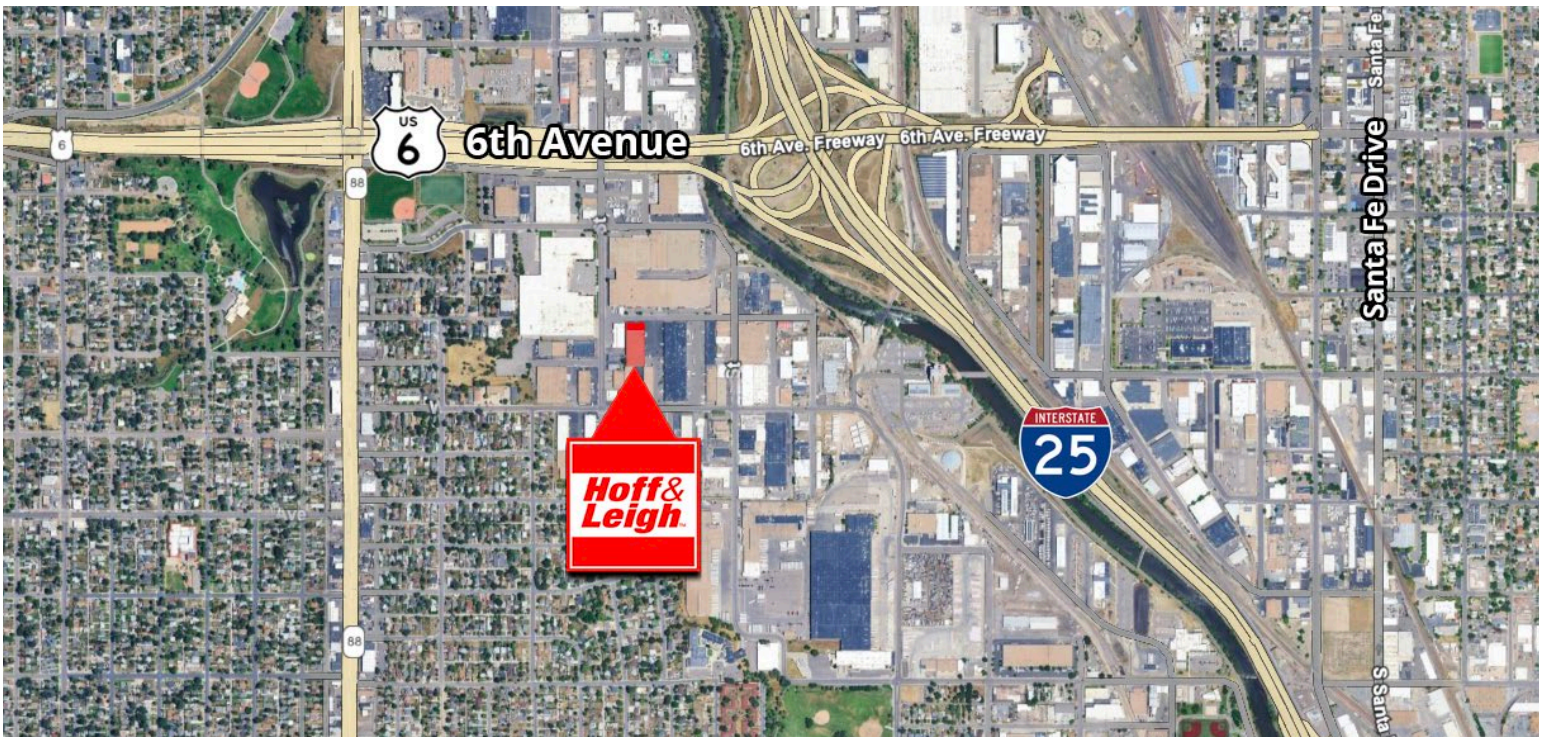
O: 720.572.5187

CHertel@HoffLeigh.com



Industrial Space For Sublease

2500 W 4TH AVENUE UNIT #7, DENVER, COLORADO 80219



Rev: October 30, 2025



Our Network Is Your Edge

All information is from sources deemed reliable and is subject to errors, omissions, change of price, rental, prior sale, and withdrawal without notice. Prospect should carefully verify each item of information contained herein.



Brandon Langiewicz, SIOR

C: 715.512.0265

O: 720.572.5187

Brandon@HoffLeigh.com

Claire Hertel

C: 303.506.2918

O: 720.572.5187

CHertel@HoffLeigh.com