

555 N. NEW BALLAS ROAD
CREVE COEUR, MO 63141



Contact Information

Matt Hirsch
(314) 646-3305
mhirsch@mdrea.com

Michael Cozad
(314) 646-3307
mcozad@cozadgroup.com



Cozad Commercial Real Estate
MD Real Estate Advisors, LLC
16 Sunnen Drive, Ste. 164
St. Louis, Missouri 63143

PROPERTY HIGHLIGHTS

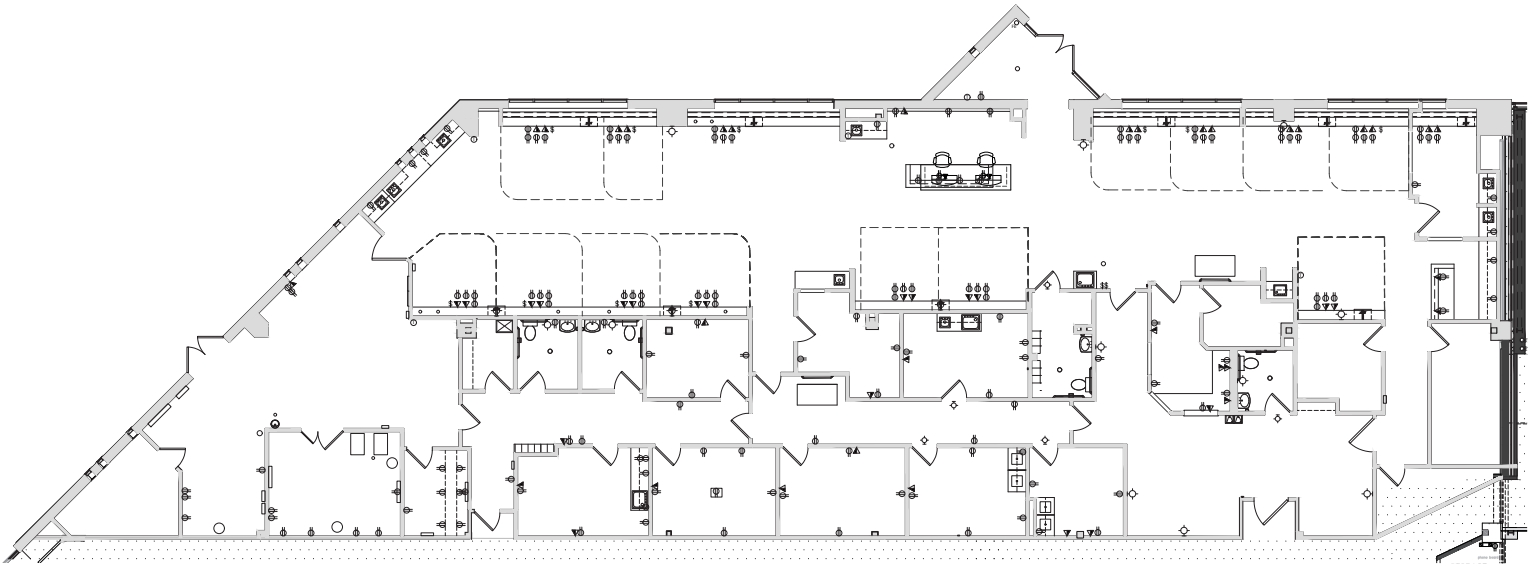
- ▶ Up to 8,557 SF medical office suite available
 - Suite 140/150: 7,126 SF
 - Suite 170: 8,557 SF
- ▶ Class A medical facility
- ▶ Dedicated physician parking
- ▶ Porte cochère allows for covered drop off and pick up
- ▶ Parking ratio of 5:1000
- ▶ 1.7 miles from Mercy Hospital, 2.4 miles from Missouri Baptist Hospital
- ▶ Located at signalized intersection off Ballas Road and Old Ballas Road
- ▶ **Lease Rate: \$30.00/sf FS**

555 N. NEW BALLAS ROAD

CREVE COEUR, MO 63141



Suite 140/150
7,126 SF



Suite 170
8,557 SF

Information herein has been obtained from the owner of the property or from other sources. The brokers do not guarantee the accuracy of this information. Sellers and brokers make no representation as to the environmental or other conditions of the property and that purchaser investigate fully.

COZAD COMMERCIAL REAL ESTATE
MD REAL ESTATE ADVISORS
A subsidiary of Cozad Commercial Real Estate, Ltd.
16 Sunnen Dr., Ste. 164 • St. Louis, MO 63143

555 N. NEW BALLAS ROAD CREVE COEUR, MO 63141



Information herein has been obtained from the owner of the property or from other sources. The brokers do not guarantee the accuracy of this information. Sellers and brokers make no representation as to the environmental or other conditions of the property and that purchaser investigate fully.

**COZAD COMMERCIAL REAL ESTATE
MD REAL ESTATE ADVISORS**
A subsidiary of Cozad Commercial Real Estate, Ltd.
16 Sunnen Dr., Ste. 164 • St. Louis, MO 63143