

Park Industrial Village Building G

7,821 SF Available

2061-2069 East Center Circle E
Plymouth, MN 55441



Contact Us

**TOM
BENNETT**

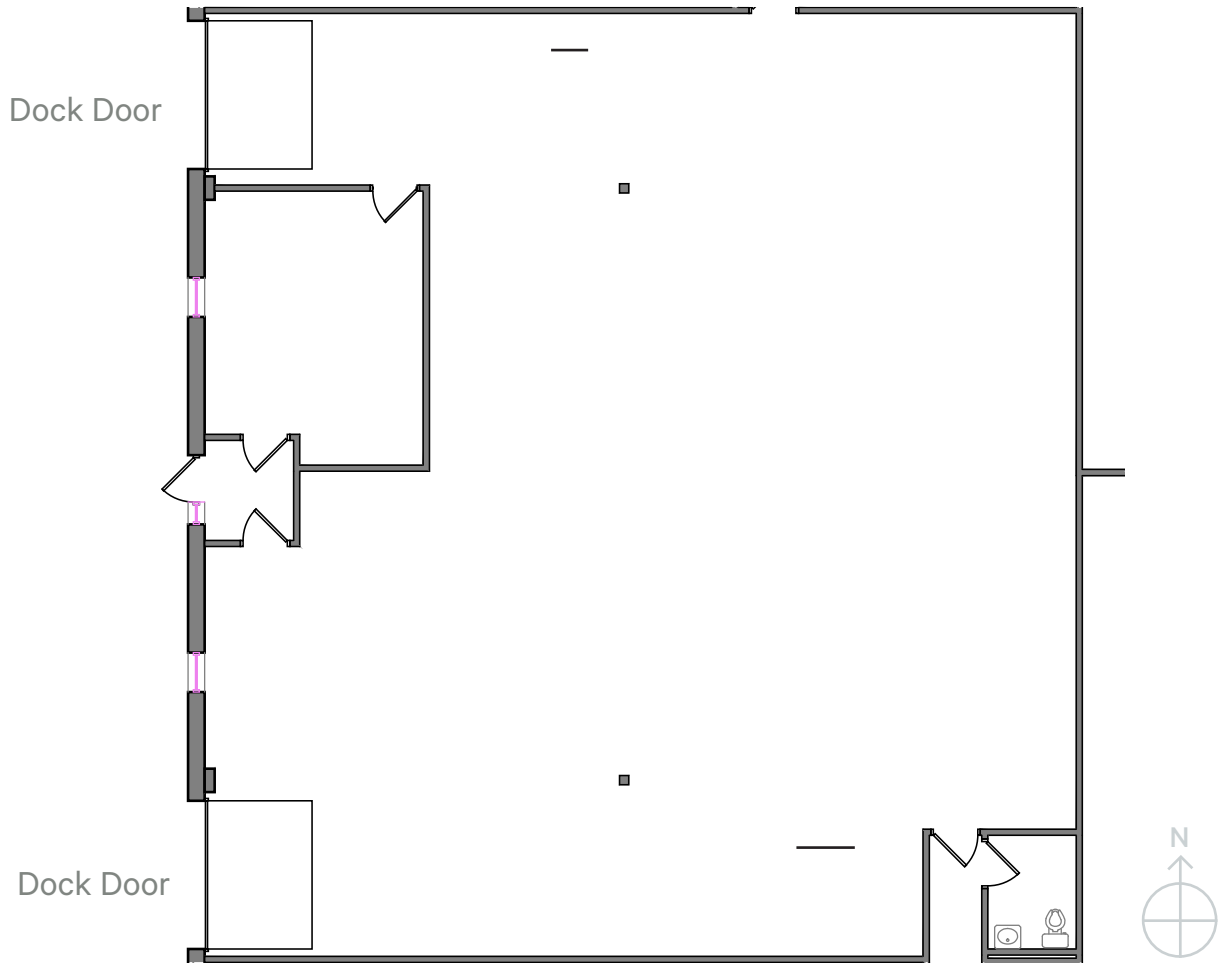
+1 612 386 6108

tom.bennett@cbre.com

**PARKER
RICKERT**

+1 612 845 8022

parker.rickert@cbre.com



Overview

Park Industrial Village is strategically located for both Northwest and Southwest users. Accessed via I-494 & Highway 55, Building G (a free-standing building).

Suite 2061

- + 3,879 SF Total
- + 353 SF Office
- + 2 Dock Doors

Lease Rates

+ Negotiable

2026 Est. Re Tax/CAM

+ \$4.24 PSF

Total Building Area

+ 71,494 SF

Land

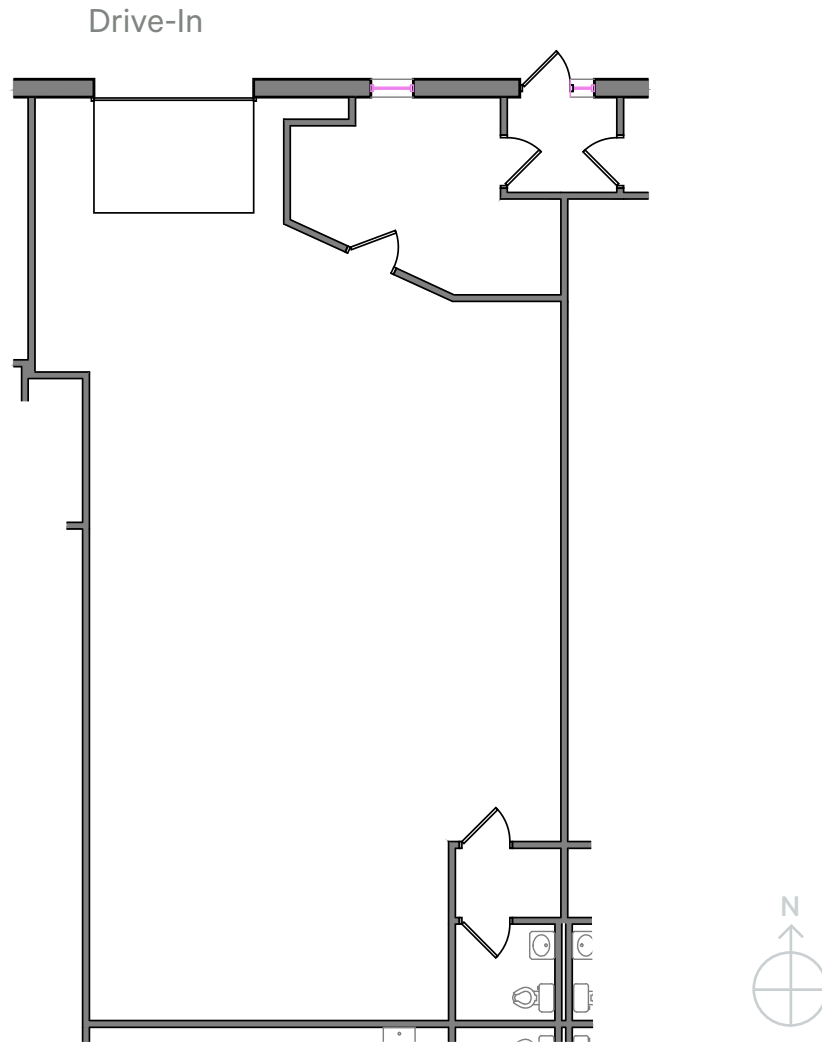
+ 16.50 acres

Clear Height

+ 14'

Year Built

+ 1979



Suite 2064

- +1,860 SF Total
- + 209 SF Office
- +1 Drive-In

Lease Rates

+ Negotiable

2026 Est. Re Tax/CAM

+ \$4.24 PSF

Total Building Area

+ 71,494 SF

Land

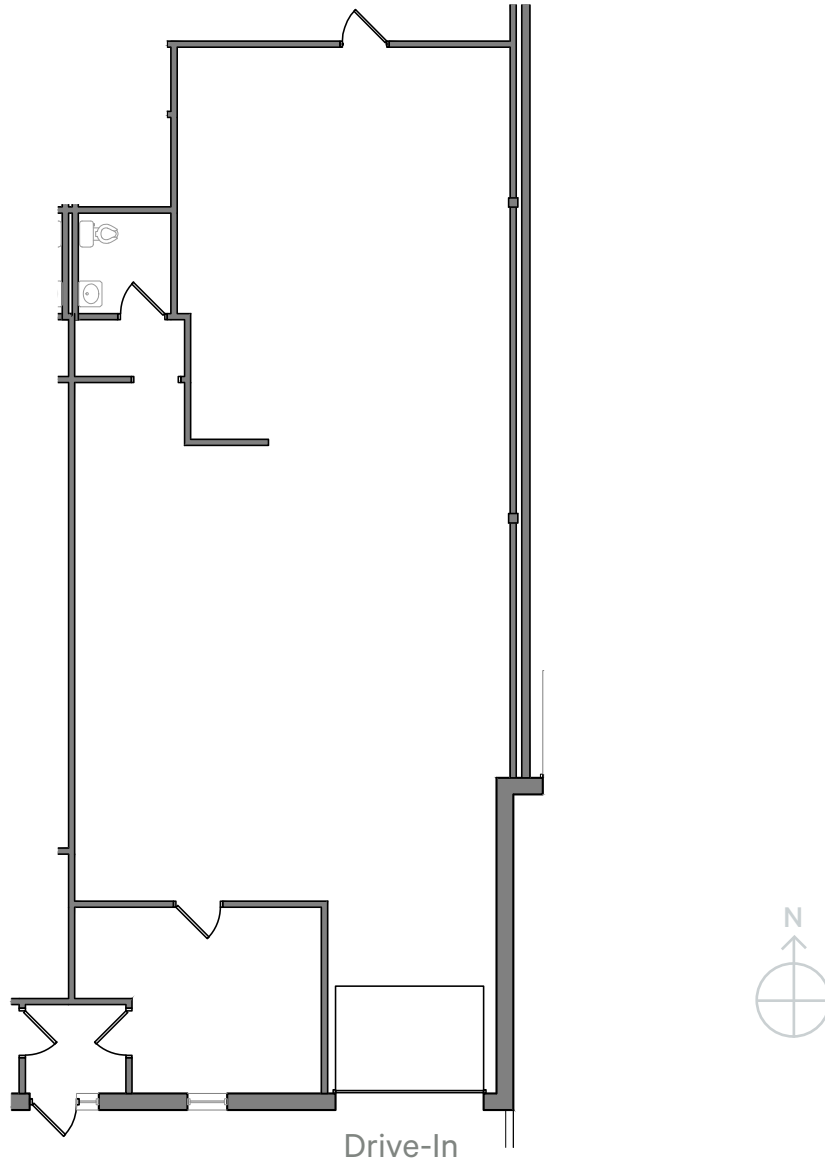
+ 16.50 acres

Clear Height

+ 14'

Year Built

+ 1979



Suite 2094

+ 2,082 SF Total

+ 242 SF Office

+ 1 Drive-In

Lease Rates

+ Negotiable

2026 Est. Re Tax/CAM

+ \$4.24 PSF

Total Building Area

+ 71,494 SF

Land

+ 16.50 acres

Clear Height

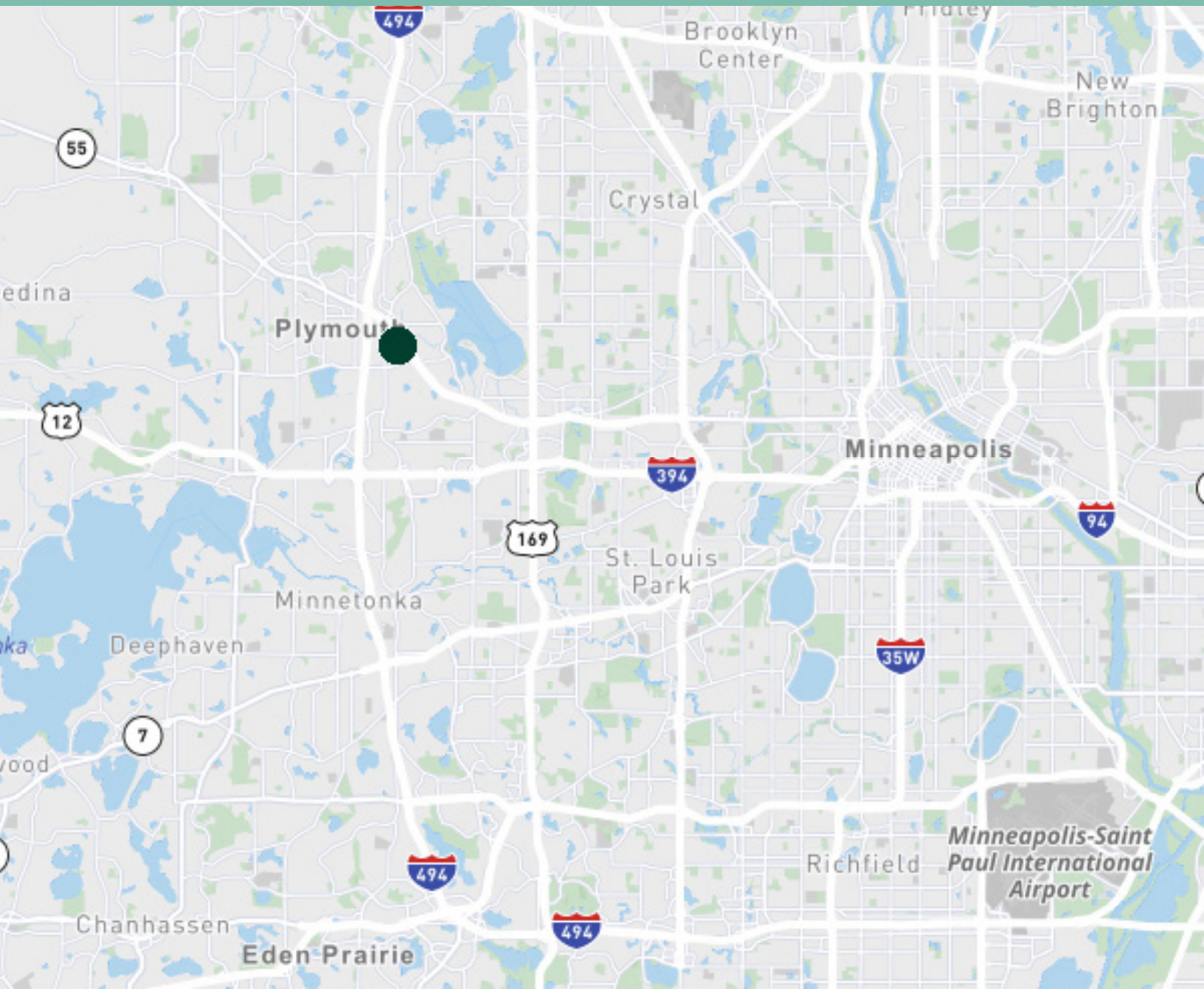
+ 14'

Year Built

+ 1979



Excellent access to I-494 & Hwy 55



Contact Us

TOM BENNETT

+1 612 386 6108

tom.bennett@cbre.com

PARKER RICKERT

+1 612 845 8022

parker.rickert@cbre.com