



PROPERTY OVERVIEW

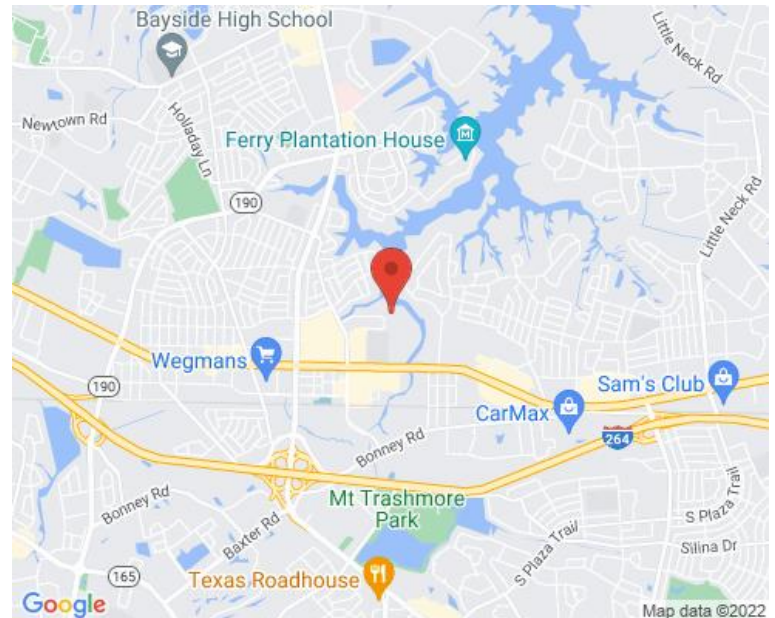
AREA MAP

The search for a corporate address that reflects Virginia Beach's business style ends at **Corporate Center VI**. Located in the heart of the Central Business District.

- A full-service, Class A, 3-story building
- Minutes from Virginia Beach Boulevard, Independence Boulevard and the Virginia Beach-Norfolk Expressway (I-264)
- Area services include banking, hotels, restaurants, conference facilities, Town Center and Pembroke Mall
- **AVAILABLE: 1ST Floor - 1,614 & 2,693 SF**
2ND Floor - 2,904 & 5,902 SF

For interior view, click link below:

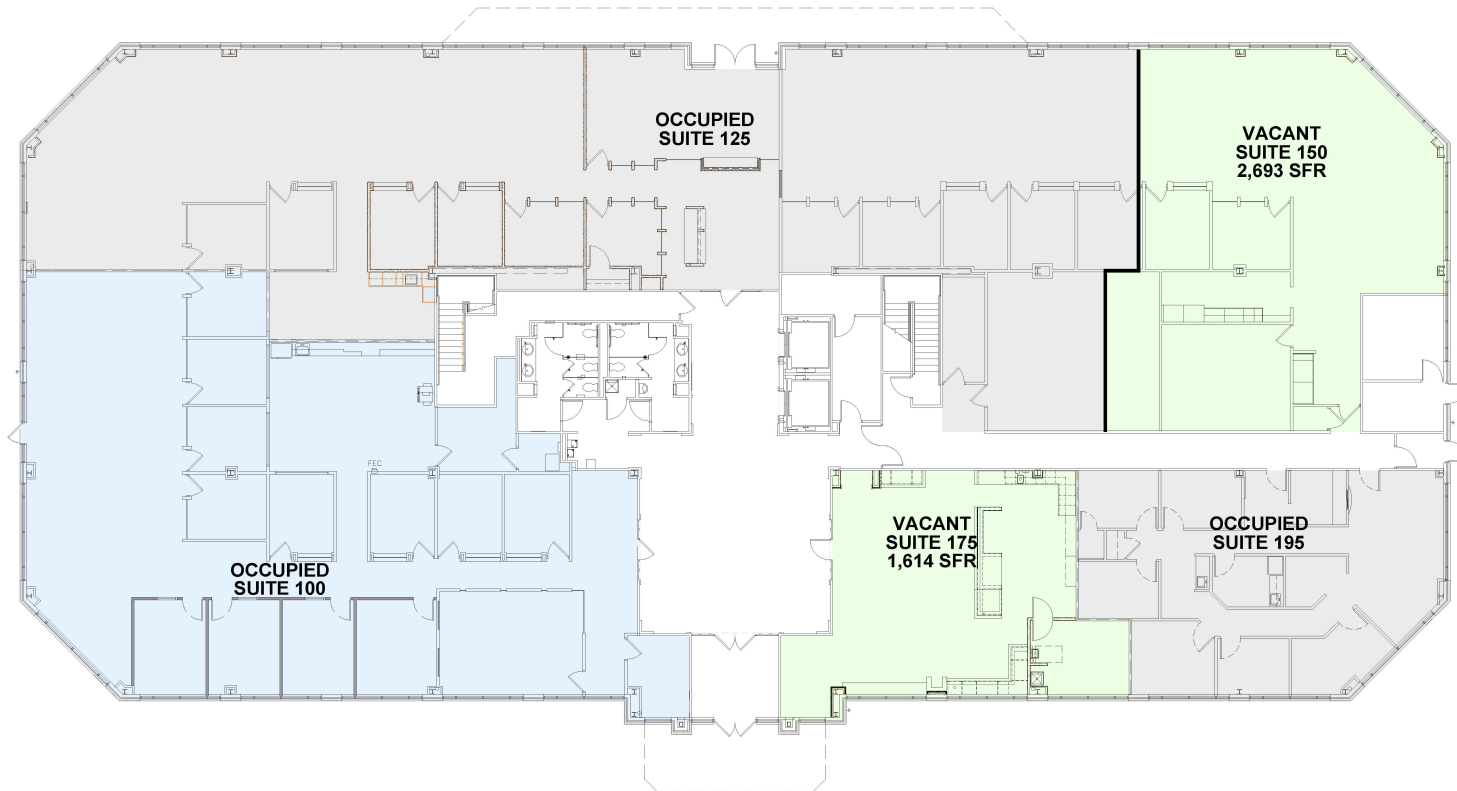
<https://my.matterport.com/show/?m=e4JgVX58GLC&br and=0>



FOR MORE INFORMATION, PLEASE CONTACT:

GERRY KELLER
(757) 490-3141
gkeller@pembrokerealty.com

Pembroke Realty Group
4433 Corporation Lane, Suite 250
Virginia Beach, VA 23462
www.pembrokerealty.com



CORPORATE CENTER VI

FIRST FLOOR

4.11.2021
1/16" = 1'-0"



FOR MORE INFORMATION, PLEASE CONTACT:

GERRY KELLER

(757) 490-3141

gkeller@pembrokerealty.com

Pembroke Realty Group
4433 Corporation Lane, Suite 250
Virginia Beach, VA 23462
www.pembrokerealty.com



CORPORATE CENTER VI

6.8.2022
1/16" = 1'-0"

PEMBROKE
REALTY GROUP

4433 CORPORATION LANE
SECOND FLOOR

MORRISETTE ARCHITECTURE
Architecture, Planning and Interior Design
TM&©MorrisetteArchitecture.com/257-637-0268

FOR MORE INFORMATION, PLEASE CONTACT:

GERRY KELLER
(757) 490-3141
gkeller@pembrokerealty.com

Pembroke Realty Group
4433 Corporation Lane, Suite 250
Virginia Beach, VA 23462
www.pembrokerealty.com