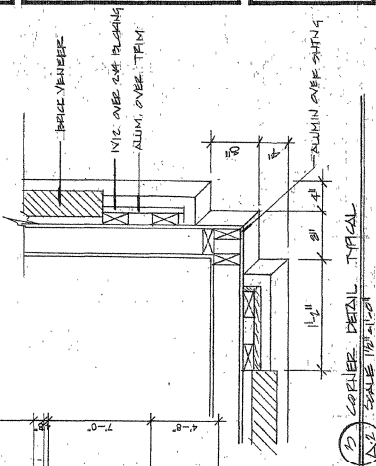
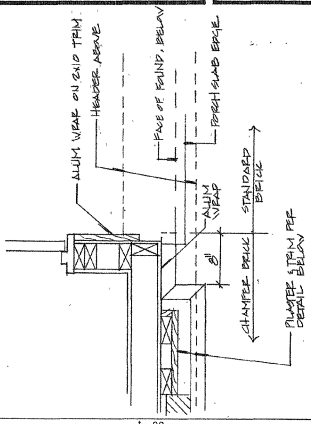
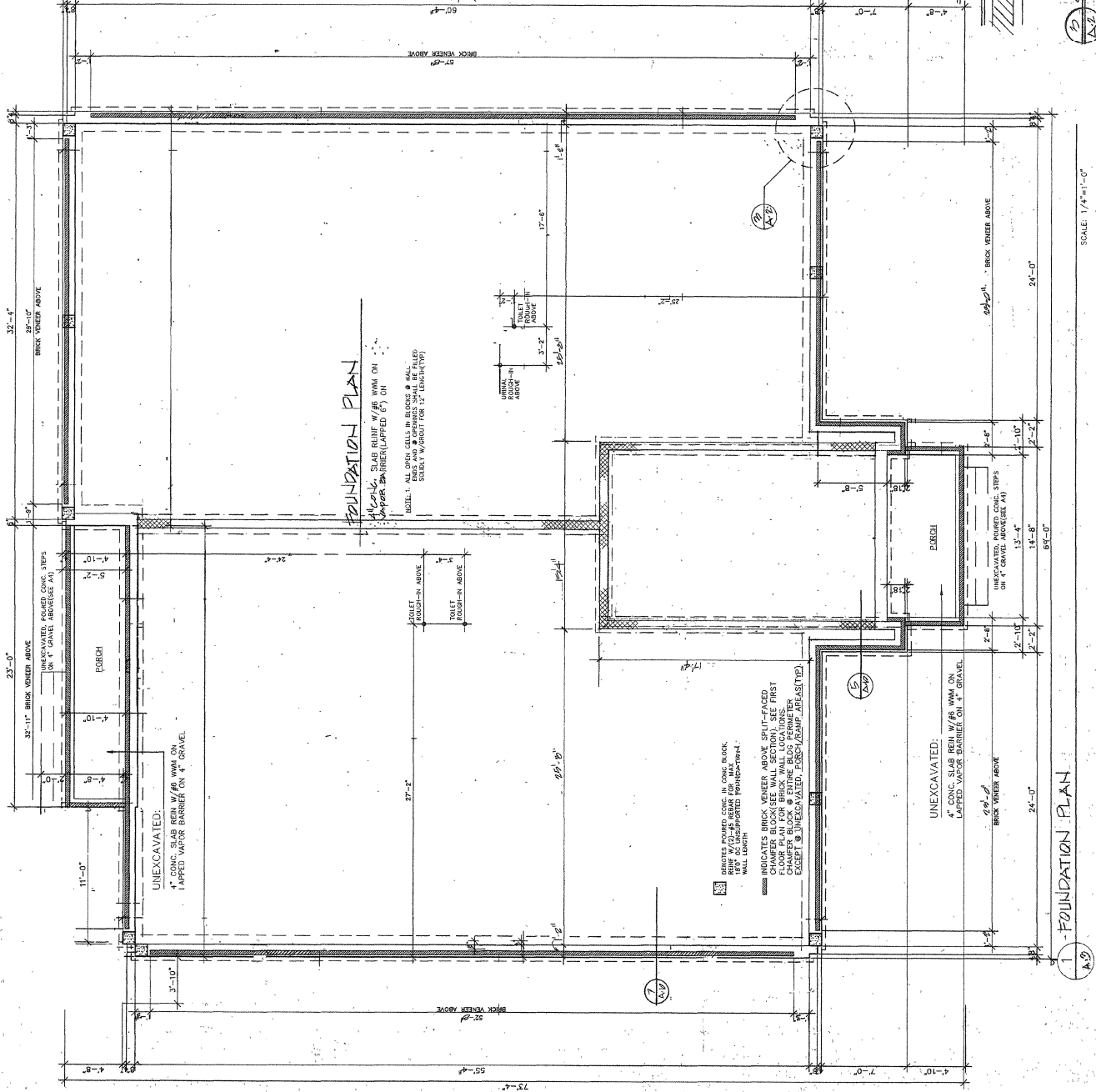
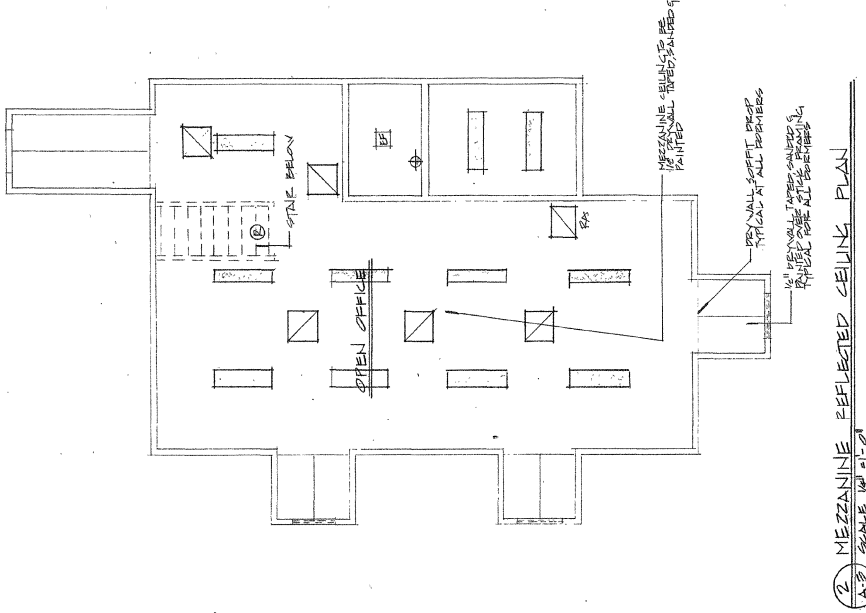
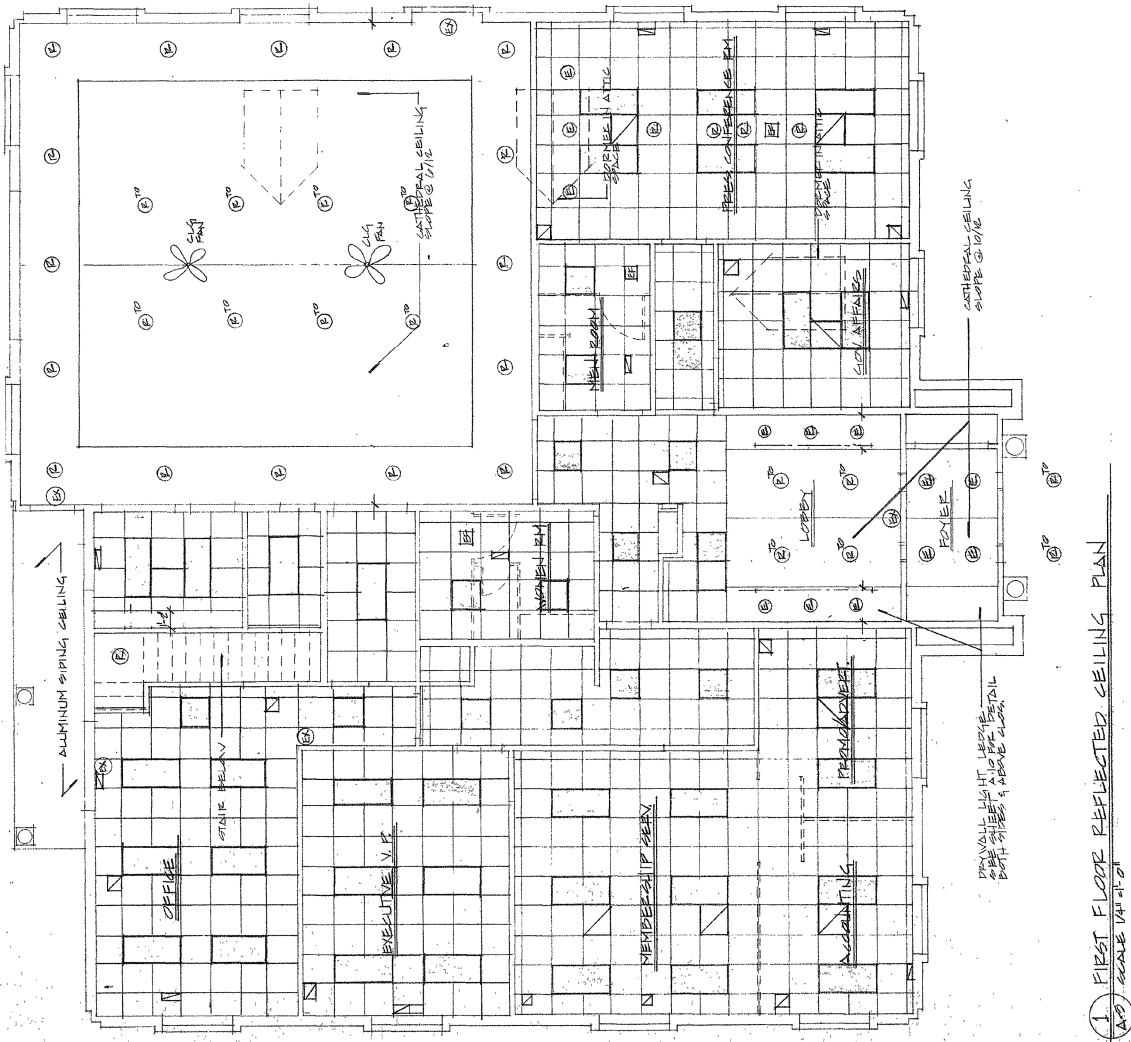


- NOTES:**
1. DIMENSIONS OF FOUNDATION WILL BE AS SHOWN UNLESS OTHERWISE NOTED.
 2. BASEMENT FOUNDED WALL FOOTINGS TO BE LEVEL.
 3. 12" PAN-SLAB ON WALLS TO BE REIN W/ POURED SOLID CORES & (2) #4 RL-BAR FOR 18" O.C. MAX UNAPPROVED LENGTH(TYP)

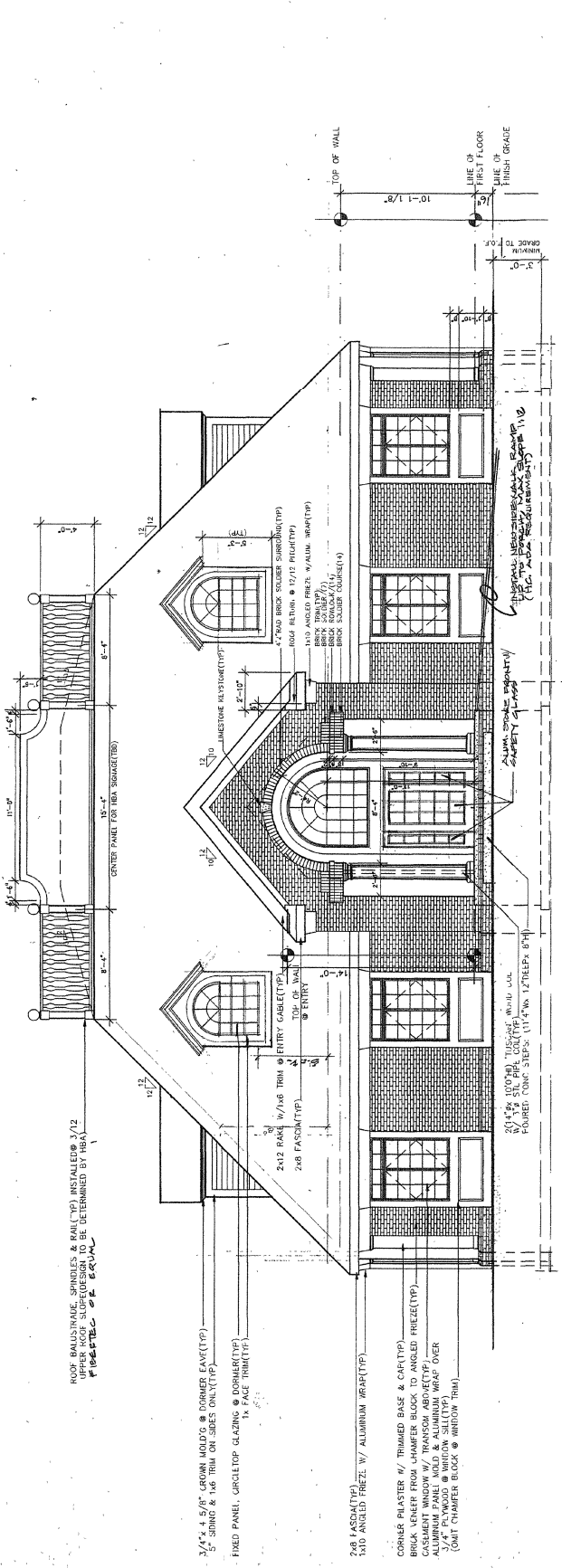


SCALE: 1/4"=1'-0"



2 MEZZANINE REFLECTED CEILING PLAN
SCALE 1/4" = 1'-0"

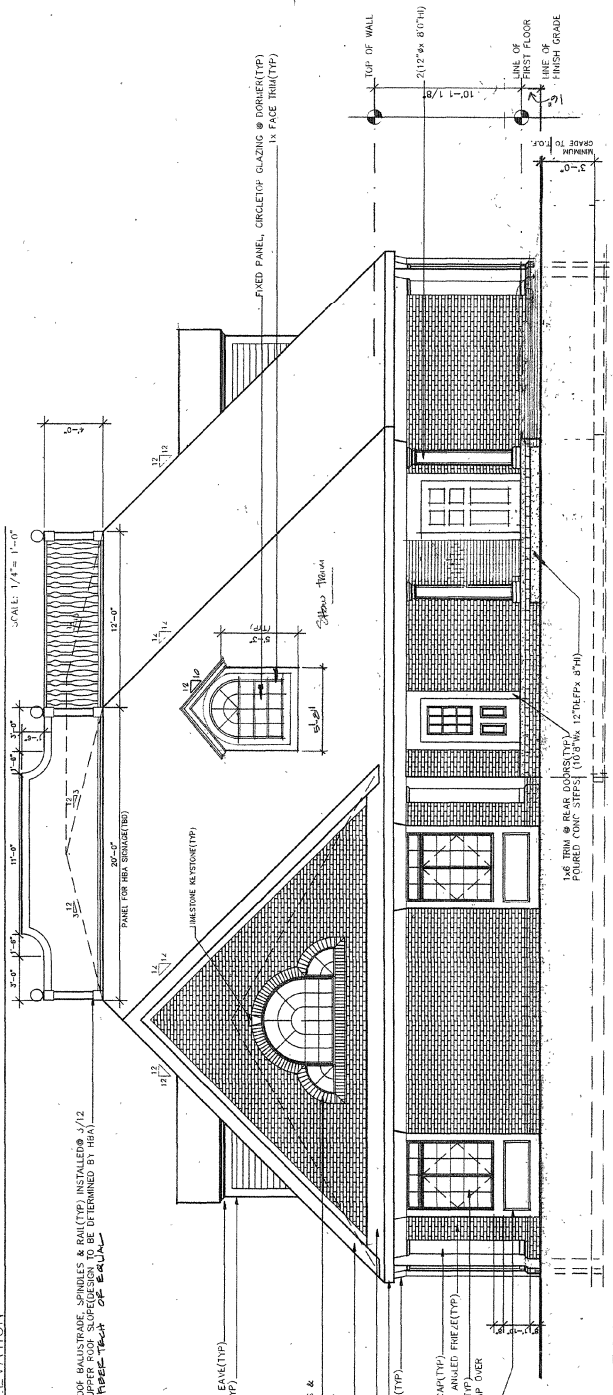
1 FIRST FLOOR REFLECTED CEILING PLAN
SCALE 1/4" = 1'-0"



1 FRONT ELEVATION

1/6

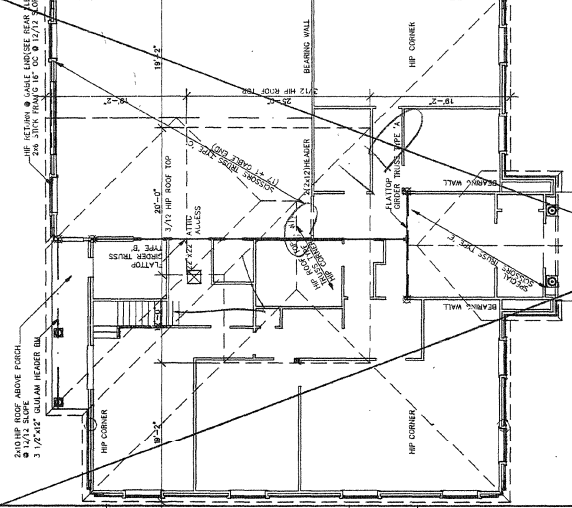
ROOF BALUSTRADE SPINDLES & RAIL (TP) INSTALLED @ 3/12 UPPER ROOF SLOPE (TO BE DETERMINED BY HBA) FIBERGLASS STAIR



2 REAR ELEVATION

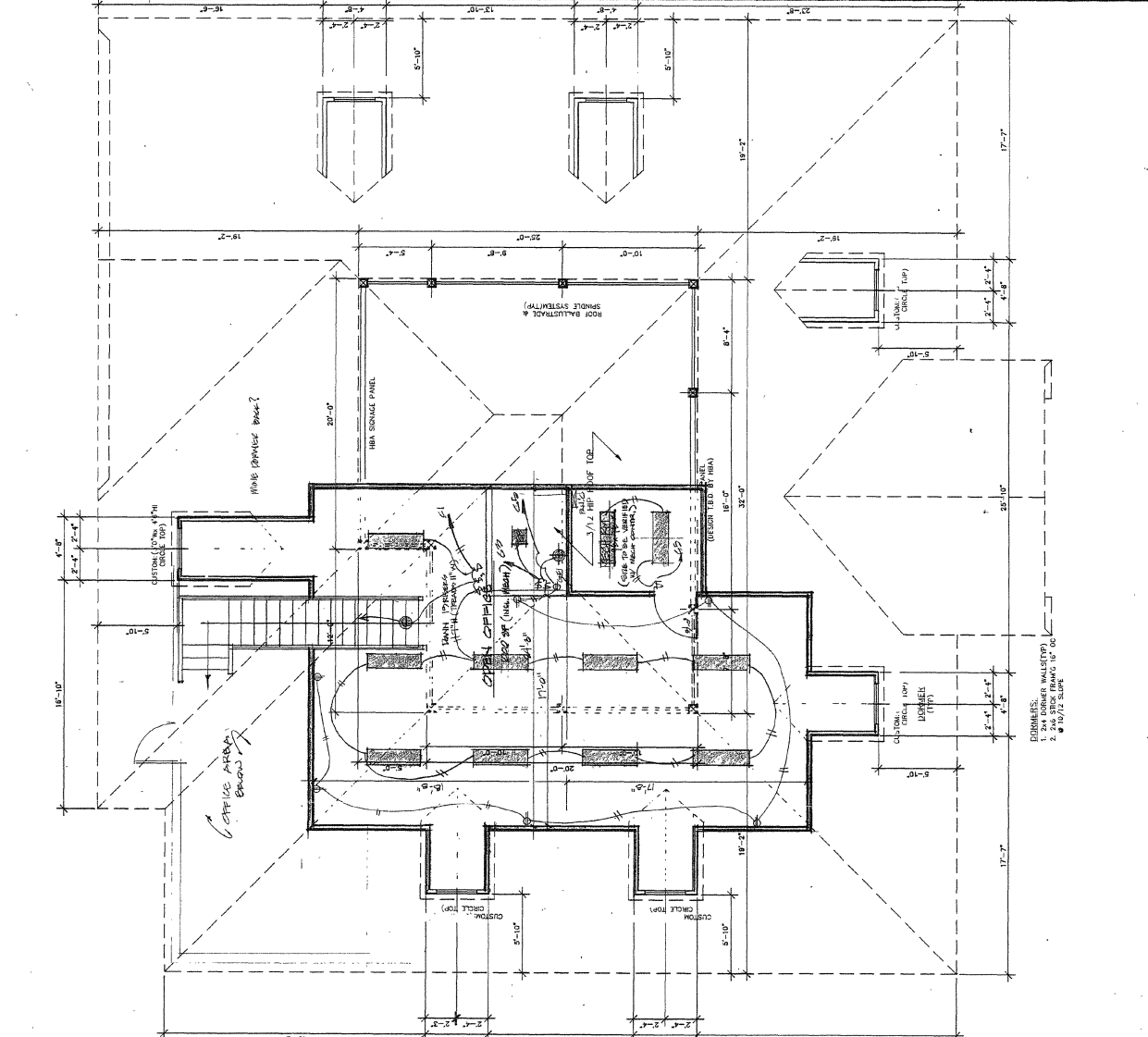
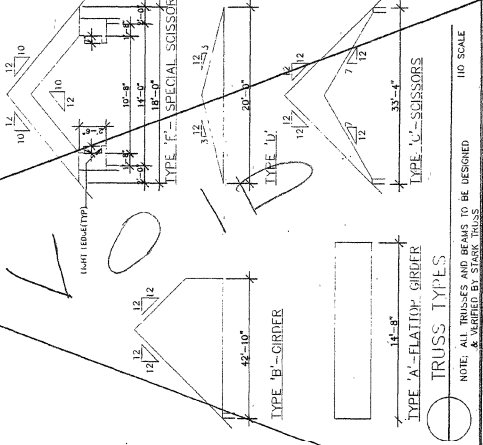
1/6

ROOF BALUSTRADE SPINDLES & RAIL (TP) INSTALLED @ 3/12 UPPER ROOF SLOPE (TO BE DETERMINED BY HBA) FIBERGLASS STAIR



TRUSS FRAMING PLAN (To Be Reviewed)
 SCALE: 1/8" = 1'-0"

- FRAMING NOTES**
1. TRUSS MANUFACTURED TO DESIGN ENGINEER TRUSSES AND ROOF SYSTEM
 2. DENOTES PRIMARY FRAMING MEMBER
 3. DENOTES SECONDARY MEMBER
 4. DENOTES ALL EXTERIOR WALLS UNLESS NOTED OTHERWISE
 5. DENOTES ALL INTERIOR WALLS UNLESS NOTED OTHERWISE
 6. DENOTES ALL INTERIOR PARTITIONS UNLESS NOTED OTHERWISE
 7. DENOTES ALL INTERIOR PARTITIONS UNLESS NOTED OTHERWISE
 8. ALL INTERIOR, NON LOAD-BEARING DOOR PARTS 3/4" AND LESS TO BE 2(2x4)
 9. ALL TRUSS OVERHANGS TO BE 12 1/2" FINISH OVERHANG FROM STUD WALL
 10. ALL TRUSS OVERHANGS TO BE 12 1/2" FINISH OVERHANG FROM STUD WALL
 11. 12/12 SLOPE ROOF TRUSSES WILL REQUIRE WINDY BACK SYSTEM JOIST TO ATTACH TO STUD WALL
 12. INSTALL DOWNED ROOF TRUSSES TO ALLOW VENTILATE ROOF & ATTIC
 13. INSTALL SPRINKLER SYSTEM OR MGA TOP-ALL DROPPED GEL'S & STAIRWELL-OPENINGS
 14. INSTALL HURRICANE TIES @ ALL TRUSS-WALL TOP PLATE CONNECTIONS
 15. TRUSS MANUFACTURER TO SPECIFY ALL TRUSS HANGARS



- FIXTURE SCHEDULE**
- 1. 2x4 RECESSED TRUSS SUPPORT
 - 2. 2x4 RECESSED TRUSS SUPPORT
 - 3. 2x4 RECESSED TRUSS SUPPORT
 - 4. 2x4 RECESSED TRUSS SUPPORT
 - 5. 2x4 RECESSED TRUSS SUPPORT
 - 6. 2x4 RECESSED TRUSS SUPPORT
 - 7. 2x4 RECESSED TRUSS SUPPORT
 - 8. 2x4 RECESSED TRUSS SUPPORT
 - 9. 2x4 RECESSED TRUSS SUPPORT
 - 10. 2x4 RECESSED TRUSS SUPPORT
 - 11. 2x4 RECESSED TRUSS SUPPORT
 - 12. 2x4 RECESSED TRUSS SUPPORT
 - 13. 2x4 RECESSED TRUSS SUPPORT
 - 14. 2x4 RECESSED TRUSS SUPPORT
 - 15. 2x4 RECESSED TRUSS SUPPORT
 - 16. 2x4 RECESSED TRUSS SUPPORT
 - 17. 2x4 RECESSED TRUSS SUPPORT
 - 18. 2x4 RECESSED TRUSS SUPPORT
 - 19. 2x4 RECESSED TRUSS SUPPORT
 - 20. 2x4 RECESSED TRUSS SUPPORT
 - 21. 2x4 RECESSED TRUSS SUPPORT
 - 22. 2x4 RECESSED TRUSS SUPPORT
 - 23. 2x4 RECESSED TRUSS SUPPORT
 - 24. 2x4 RECESSED TRUSS SUPPORT
 - 25. 2x4 RECESSED TRUSS SUPPORT
 - 26. 2x4 RECESSED TRUSS SUPPORT
 - 27. 2x4 RECESSED TRUSS SUPPORT
 - 28. 2x4 RECESSED TRUSS SUPPORT
 - 29. 2x4 RECESSED TRUSS SUPPORT
 - 30. 2x4 RECESSED TRUSS SUPPORT
 - 31. 2x4 RECESSED TRUSS SUPPORT
 - 32. 2x4 RECESSED TRUSS SUPPORT
 - 33. 2x4 RECESSED TRUSS SUPPORT
 - 34. 2x4 RECESSED TRUSS SUPPORT
 - 35. 2x4 RECESSED TRUSS SUPPORT
 - 36. 2x4 RECESSED TRUSS SUPPORT
 - 37. 2x4 RECESSED TRUSS SUPPORT
 - 38. 2x4 RECESSED TRUSS SUPPORT
 - 39. 2x4 RECESSED TRUSS SUPPORT
 - 40. 2x4 RECESSED TRUSS SUPPORT
 - 41. 2x4 RECESSED TRUSS SUPPORT
 - 42. 2x4 RECESSED TRUSS SUPPORT
 - 43. 2x4 RECESSED TRUSS SUPPORT
 - 44. 2x4 RECESSED TRUSS SUPPORT
 - 45. 2x4 RECESSED TRUSS SUPPORT
 - 46. 2x4 RECESSED TRUSS SUPPORT
 - 47. 2x4 RECESSED TRUSS SUPPORT
 - 48. 2x4 RECESSED TRUSS SUPPORT
 - 49. 2x4 RECESSED TRUSS SUPPORT
 - 50. 2x4 RECESSED TRUSS SUPPORT
 - 51. 2x4 RECESSED TRUSS SUPPORT
 - 52. 2x4 RECESSED TRUSS SUPPORT
 - 53. 2x4 RECESSED TRUSS SUPPORT
 - 54. 2x4 RECESSED TRUSS SUPPORT
 - 55. 2x4 RECESSED TRUSS SUPPORT
 - 56. 2x4 RECESSED TRUSS SUPPORT
 - 57. 2x4 RECESSED TRUSS SUPPORT
 - 58. 2x4 RECESSED TRUSS SUPPORT
 - 59. 2x4 RECESSED TRUSS SUPPORT
 - 60. 2x4 RECESSED TRUSS SUPPORT
 - 61. 2x4 RECESSED TRUSS SUPPORT
 - 62. 2x4 RECESSED TRUSS SUPPORT
 - 63. 2x4 RECESSED TRUSS SUPPORT
 - 64. 2x4 RECESSED TRUSS SUPPORT
 - 65. 2x4 RECESSED TRUSS SUPPORT
 - 66. 2x4 RECESSED TRUSS SUPPORT
 - 67. 2x4 RECESSED TRUSS SUPPORT
 - 68. 2x4 RECESSED TRUSS SUPPORT
 - 69. 2x4 RECESSED TRUSS SUPPORT
 - 70. 2x4 RECESSED TRUSS SUPPORT
 - 71. 2x4 RECESSED TRUSS SUPPORT
 - 72. 2x4 RECESSED TRUSS SUPPORT
 - 73. 2x4 RECESSED TRUSS SUPPORT
 - 74. 2x4 RECESSED TRUSS SUPPORT
 - 75. 2x4 RECESSED TRUSS SUPPORT
 - 76. 2x4 RECESSED TRUSS SUPPORT
 - 77. 2x4 RECESSED TRUSS SUPPORT
 - 78. 2x4 RECESSED TRUSS SUPPORT
 - 79. 2x4 RECESSED TRUSS SUPPORT
 - 80. 2x4 RECESSED TRUSS SUPPORT
 - 81. 2x4 RECESSED TRUSS SUPPORT
 - 82. 2x4 RECESSED TRUSS SUPPORT
 - 83. 2x4 RECESSED TRUSS SUPPORT
 - 84. 2x4 RECESSED TRUSS SUPPORT
 - 85. 2x4 RECESSED TRUSS SUPPORT
 - 86. 2x4 RECESSED TRUSS SUPPORT
 - 87. 2x4 RECESSED TRUSS SUPPORT
 - 88. 2x4 RECESSED TRUSS SUPPORT
 - 89. 2x4 RECESSED TRUSS SUPPORT
 - 90. 2x4 RECESSED TRUSS SUPPORT
 - 91. 2x4 RECESSED TRUSS SUPPORT
 - 92. 2x4 RECESSED TRUSS SUPPORT
 - 93. 2x4 RECESSED TRUSS SUPPORT
 - 94. 2x4 RECESSED TRUSS SUPPORT
 - 95. 2x4 RECESSED TRUSS SUPPORT
 - 96. 2x4 RECESSED TRUSS SUPPORT
 - 97. 2x4 RECESSED TRUSS SUPPORT
 - 98. 2x4 RECESSED TRUSS SUPPORT
 - 99. 2x4 RECESSED TRUSS SUPPORT
 - 100. 2x4 RECESSED TRUSS SUPPORT

ELECTRICAL MESSINE PLAN
 SCALE: 1/4" = 1'-0"

ADJERSEN WINDOW/DOOR SCHEDULE

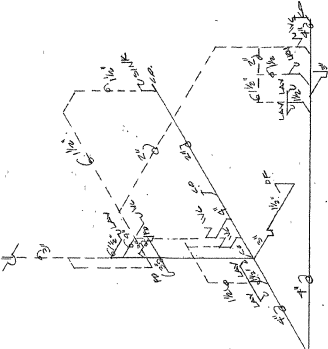
UNIT	QUANTITY
18" x 14"	13

ADJERSEN TO DETERMINE WINDOW MANUFACTURER.
 WINDOW SCHEDULES ARE USED AS A SIBIG UTMARK ONLY.

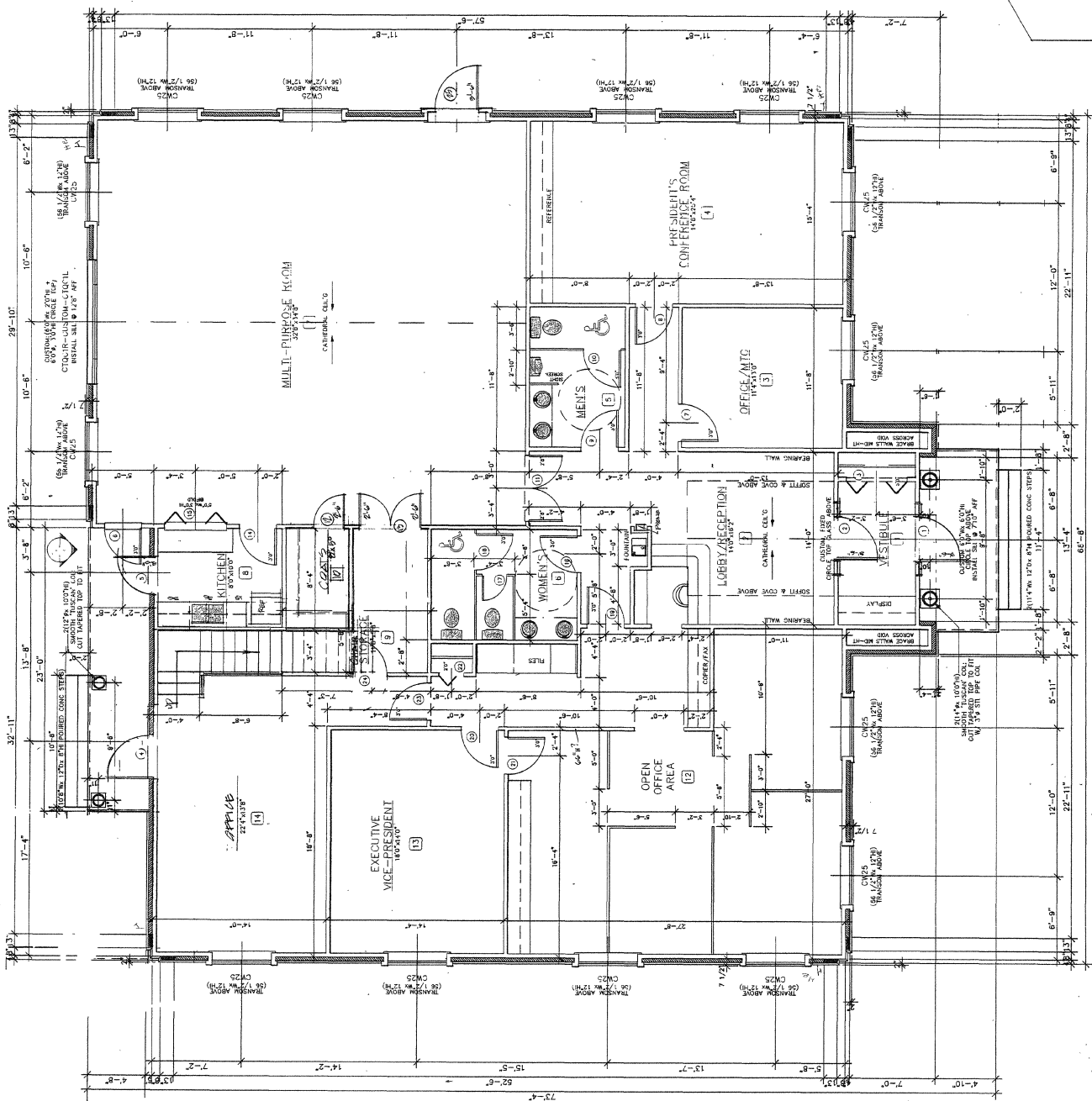
DOOR SCHEDULE

DOOR	SIZE/TYPE
1	30" WIDE (L) / 78" HIGH (H) W/PANIC HARDWARE
2	30" WIDE (L) / 78" HIGH (H) W/PANIC HARDWARE
3	30" WIDE (L) / 78" HIGH (H) W/PANIC HARDWARE
4	30" WIDE (L) / 78" HIGH (H) W/PANIC HARDWARE
5	30" WIDE (L) / 78" HIGH (H) W/PANIC HARDWARE
6	30" WIDE (L) / 78" HIGH (H) W/PANIC HARDWARE
7	30" WIDE (L) / 78" HIGH (H) W/PANIC HARDWARE
8	30" WIDE (L) / 78" HIGH (H) W/PANIC HARDWARE
9	30" WIDE (L) / 78" HIGH (H) W/PANIC HARDWARE
10	30" WIDE (L) / 78" HIGH (H) W/PANIC HARDWARE
11	30" WIDE (L) / 78" HIGH (H) W/PANIC HARDWARE
12	30" WIDE (L) / 78" HIGH (H) W/PANIC HARDWARE
13	30" WIDE (L) / 78" HIGH (H) W/PANIC HARDWARE
14	30" WIDE (L) / 78" HIGH (H) W/PANIC HARDWARE
15	30" WIDE (L) / 78" HIGH (H) W/PANIC HARDWARE
16	30" WIDE (L) / 78" HIGH (H) W/PANIC HARDWARE
17	30" WIDE (L) / 78" HIGH (H) W/PANIC HARDWARE
18	30" WIDE (L) / 78" HIGH (H) W/PANIC HARDWARE
19	30" WIDE (L) / 78" HIGH (H) W/PANIC HARDWARE
20	30" WIDE (L) / 78" HIGH (H) W/PANIC HARDWARE
21	30" WIDE (L) / 78" HIGH (H) W/PANIC HARDWARE
22	30" WIDE (L) / 78" HIGH (H) W/PANIC HARDWARE
23	30" WIDE (L) / 78" HIGH (H) W/PANIC HARDWARE
24	30" WIDE (L) / 78" HIGH (H) W/PANIC HARDWARE
25	30" WIDE (L) / 78" HIGH (H) W/PANIC HARDWARE
26	30" WIDE (L) / 78" HIGH (H) W/PANIC HARDWARE
27	30" WIDE (L) / 78" HIGH (H) W/PANIC HARDWARE
28	30" WIDE (L) / 78" HIGH (H) W/PANIC HARDWARE
29	30" WIDE (L) / 78" HIGH (H) W/PANIC HARDWARE
30	30" WIDE (L) / 78" HIGH (H) W/PANIC HARDWARE

SQUARE FOOTAGE TOTALS
 FIRST FLOOR: 4172 SF
 TOTAL: 1000 SF



PLUMBING ISOMETRIC
 * SEE PLUMBING ISOMETRIC PLANS FOR
 BUILDING DIMENSIONS



FIRST FLOOR PLUMBING PLAN
 4172 SF
 SCALE: 1/4"=1'-0"

