



GROUND LEASE
3,988 SF BUILDING | 42,253 SF PREMISES

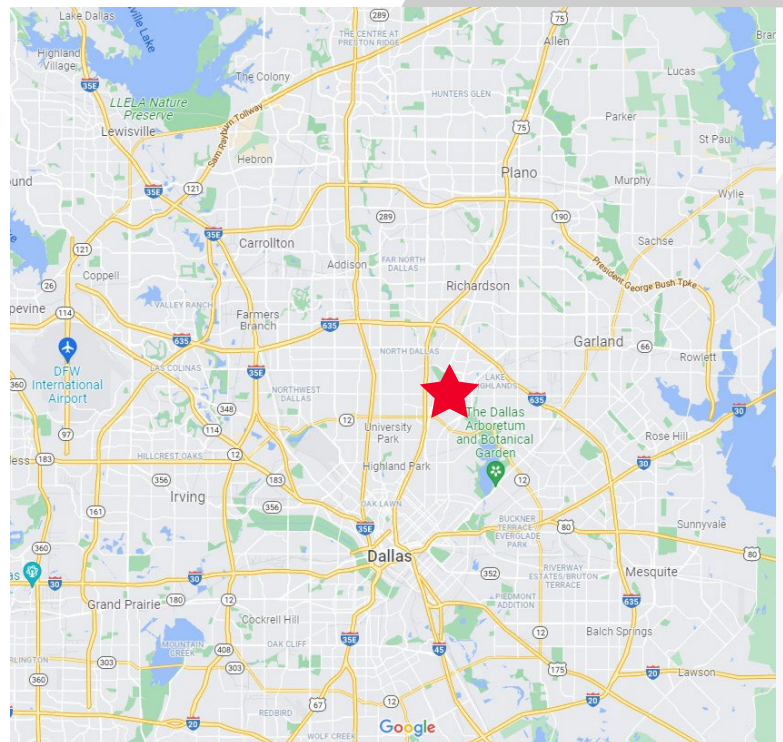
Property Highlights

- Lease Expiration: 05/31/2029
- Rental Rate: Negotiable
- Available Immediately

Building Highlights

Previously a Chase Bank, this plaza offers flexible users the chance to occupy the space. The retail location in far north Dallas, located in northeast Dallas off Skillman and Abrams.

- Close Proximity to Northwest Highway and N Central Expy.
- Nearby amenities (Hotel, restaurants, shops etc.)



Contact

JOEL ZANDSTRA
+1 972 663 9787
joel.zandstra@cushwake.com

MARY FRANCES BURNETTE
+1 817 682 7330
maryfrances.burnette@cushwake.com



Ground Lease

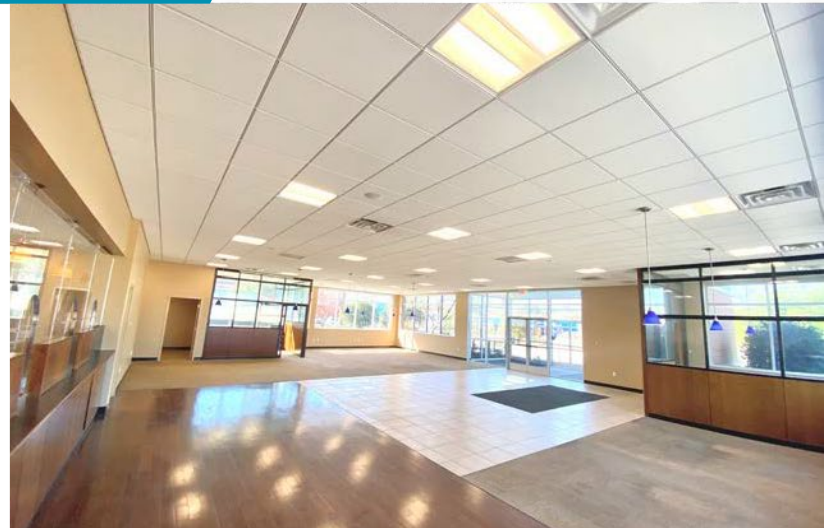
3,988 SF Building | 42,253 SF Premises

- 2 Offices
- 2 Storage Rooms
- 1 Break Room
- 1 Copy/Storage Room
- Men's Bathroom
- Women's Bathroom

Contact

JOEL ZANDSTRA
+1 972 663 9787
joel.zandstra@cushwake.com

MARY FRANCES BURNETTE
+1 817 682 7330
maryfrances.burnette@cushwake.com



Contact

JOEL ZANDSTRA
+1 972 663 9787
joel.zandstra@cushwake.com

MARY FRANCES BURNETTE
+1 817 682 7330
maryfrances.burnette@cushwake.com