



FOR LEASE

±1,800 SF TO ±6,916 SF FLEX SPACES AVAILABLE
IN A STAND ALONE INDUSTRIAL BUILDING

30 LINDBERGH AVE, LIVERMORE, CA 94551

LOCAL EXPERTISE. INTERNATIONAL REACH. WORLD CLASS.

Blake Dicus

Principal

bdicus@lee-associates.com

925-737-4144

LIC NO 02074870

Sean Offers, SIOR

Principal

soffers@lee-associates.com

925-737-4159

LIC NO 01858116



PROPERTY HIGHLIGHTS



Stand Alone Industrial Building



One (1) 10'x12' roll up door



Paved Yard space



Power: 1200 amps



Lot size: 1.66 acres



Functional layout



Zoning: Industrial District



Close proximity to I-580 and Highway 84



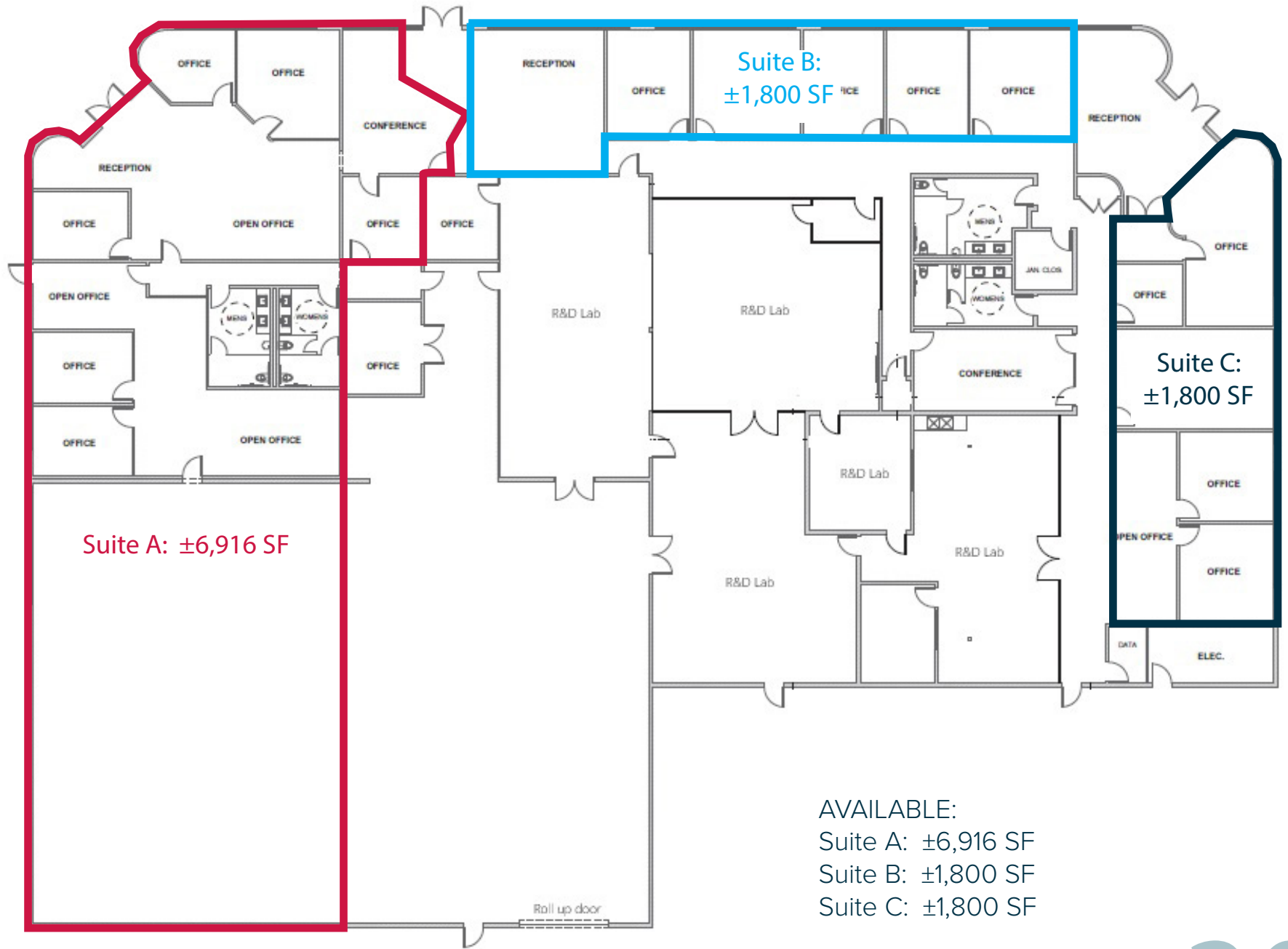
AVAILABLE:

Suite A: ±6,916 SF

Suite B: ±1,800 SF

Suite C: ±1,800 SF

30
LINDBERGH AVE



AVAILABLE:
Suite A: ±6,916 SF
Suite B: ±1,800 SF
Suite C: ±1,800 SF

AERIAL VIEW



30 MILES TO OAKLAND

INTERSTATE CALIFORNIA 580

40 MILES TO STOCKTON

CALIFORNIA 84

32 MILES TO SAN JOSE

AERIAL VIEW - FACING WEST



LIVERMORE AIRPORT

AIRWAY BLVD

Kitchen | Bar
ELEVATION LVK

SAN FRANCISCO
PREMIUM OUTLETS
A SIMON CENTER

24 HOUR FITNESS

COSTCO
WHOLESALE

INTERSTATE
CALIFORNIA
580



ISABEL AVE

FOR LEASE
±1,800 SF TO ±6,916 SF FLEX SPACES AVAILABLE
IN A STAND ALONE INDUSTRIAL BUILDING

30 LINDBERGH AVE | LIVERMORE, CA 94551

Blake Dicus

Principal
bdicus@lee-associates.com
925-737-4144
LIC NO 02074870

Sean Offers, SIOR

Principal
soffers@lee-associates.com
925-737-4159
LIC NO 01858116

All information furnished regarding property for sale, rental or financing is from sources deemed reliable, but no warranty or representation is made to the accuracy thereof and same is submitted to errors, omissions, change of price, rental or other conditions prior to sale, lease or financing or withdrawal without notice. No liability of any kind is to be imposed on the broker herein.

Lee & Associates® East Bay, Inc. Corp. ID 01194869 5000 Pleasanton Ave, Suite 220, Pleasanton, CA 94566

LEE-ASSOCIATES.COM/PLEASANTON/

30
LINDBERGH AVE