

FOR LEASE

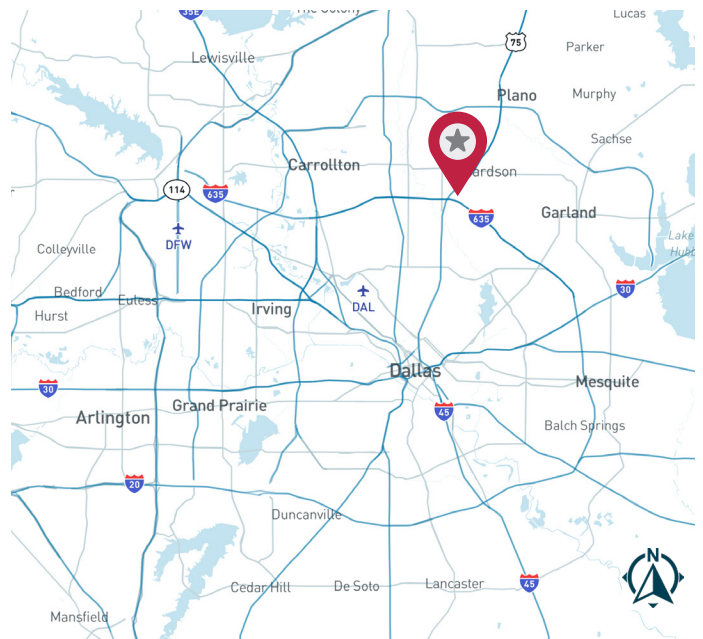
1400 S Sherman Street | Richardson, TX 75081



TI Business Park
±2,711 SF

AVAILABILITY HIGHLIGHTS

- 16' Clear Height
- Grade-Level Loading
- Immediate Access to US-75 and minutes to 635 and PGBT/SH 190
- Close to CityLine, DART, and major retail amenities
- Nearby employers include State Farm, Raytheon, Cisco, and Fujitsu



FOR MORE INFORMATION:

JESSICA REINHARDT
972.934.4005
jreinhardt@lee-associates.com

SUSAN CANCEMI
972.934.4005
scancemi@lee-associates.com

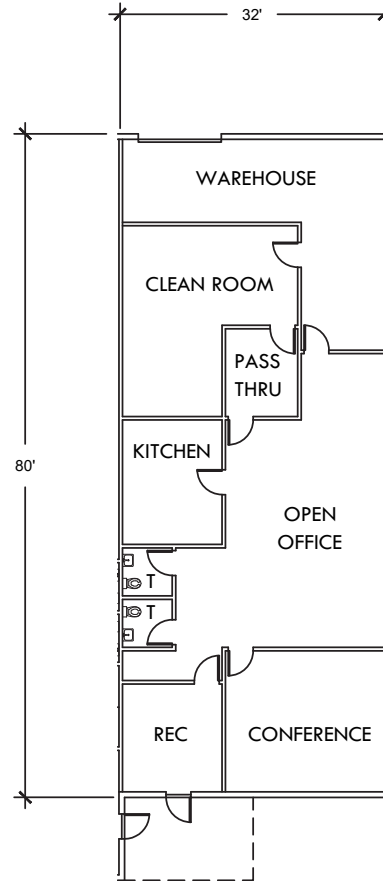
MANAGED BY:

CIP REAL ESTATE

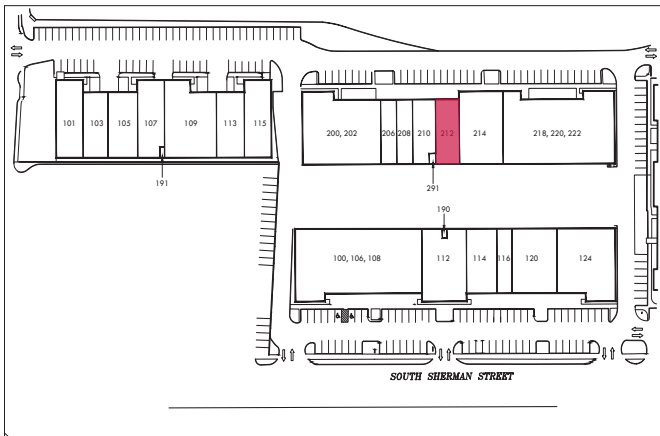
LEE & ASSOCIATES
COMMERCIAL REAL ESTATE SERVICES
leedallas.com

FLOOR PLAN

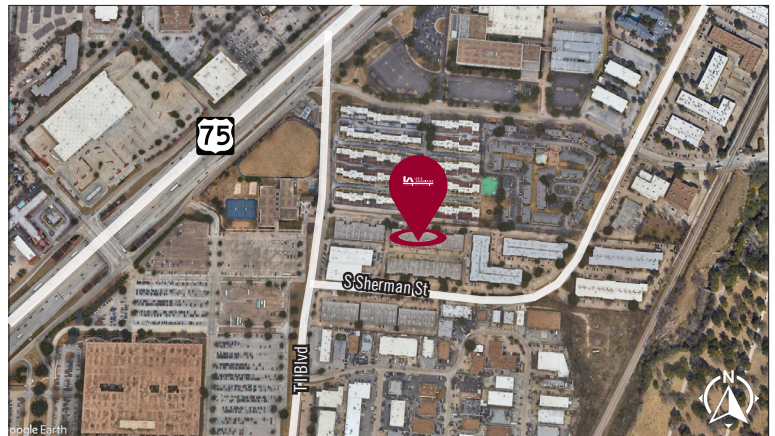
STE 212
±2,711 SF



SITE PLAN



AERIAL



All information furnished regarding property for sale, rental or financing is from sources deemed reliable, but no warranty or representation is made to the accuracy thereof and same is submitted to errors, omissions, change of price, rental or other conditions prior to sale, lease or financing or withdrawal without notice. No liability of any kind is to be imposed on the broker herein.

FOR MORE INFORMATION:

JESSICA REINHARDT
972.934.4005
jreinhardt@lee-associates.com

SUSAN CANCEMI
972.934.4005
scancemi@lee-associates.com

MANAGED BY:

CIP REAL ESTATE

LEE & ASSOCIATES
COMMERCIAL REAL ESTATE SERVICES
leedallas.com