

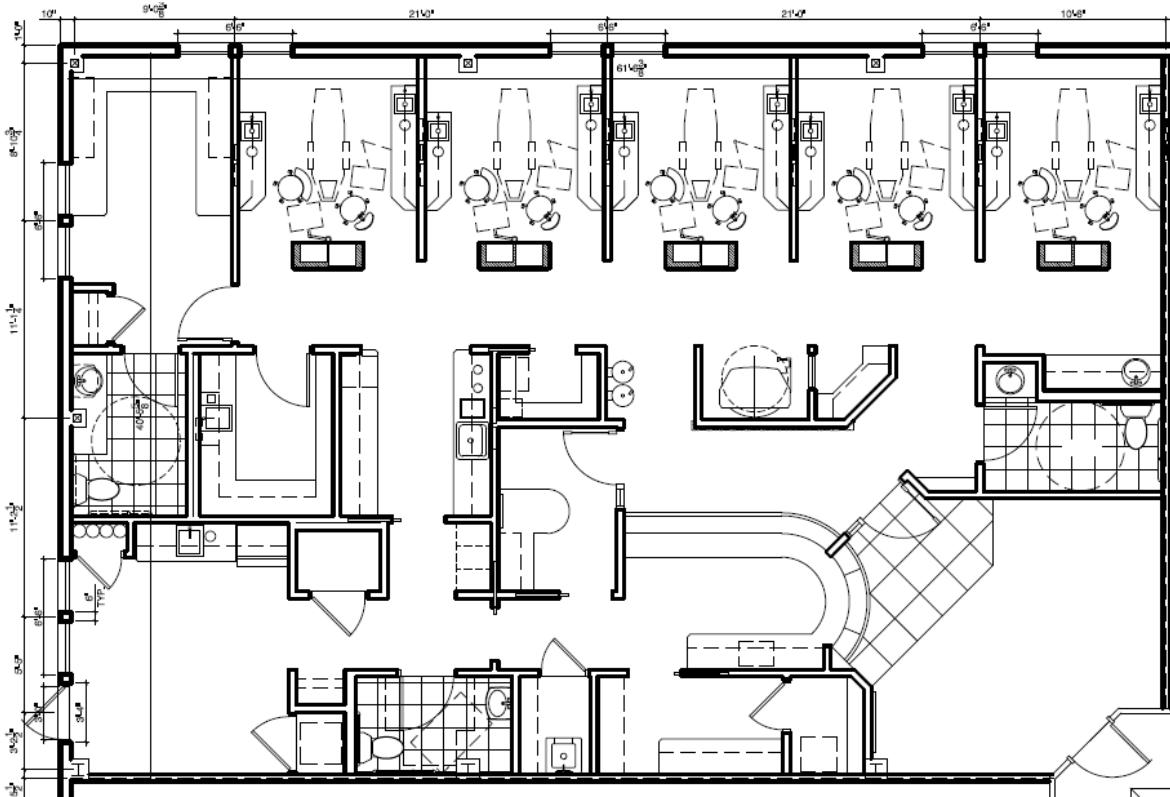
SUITE 120 | 2,740 SF

2700-2800 Keslinger Rd \ Geneva, IL



SPACE NOTES

- Ideal layout for a dentist
- In-suite restroom
- Monument signage available
- Close proximity to Delnor Campus



STEVEN REA
630.468.1780
SRea@VersaRES.com

RYAN MOEN, SIOR
630.480.6346
RMoen@VersaRES.com

JOHN MILLNER, CCIM
630.480.6342
JMillner@VersaRES.com

1 MID AMERICA PLAZA, 3RD FLOOR
OAKBROOK TERRACE, IL 60181
630.480.6413

EXCLUSIVELY LISTED BY
VERSA
REAL ESTATE SERVICES