

# 1100G

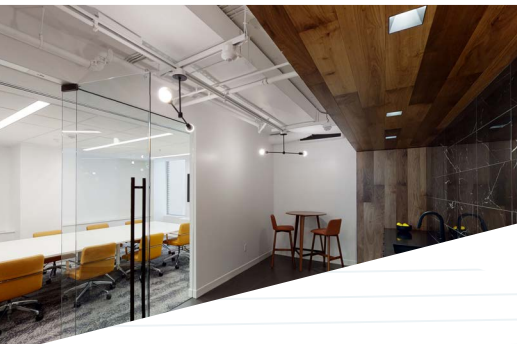
**TOP FLOOR AVAILABLE**

9,759 SF WITH FOUR SIDES OF GLASS



**MOVE-IN READY  
SPEC SUITES AVAILABLE &  
MORE ON THE WAY**

1,919 - 3,837 SF



360°  
VIRTUAL TOUR

# Even More Elbow Room.

The sixth floor conference facility, lounge & coffee bar allows tenants to host large events directly at the building. These facilities also provide tenants the ability to hold impromptu meetings, huddles or team events. Offering multiple soft seating areas, a 12-person executive board room and 60-person conference center, the various offerings at 1100 G provide real connections & higher employee satisfaction.

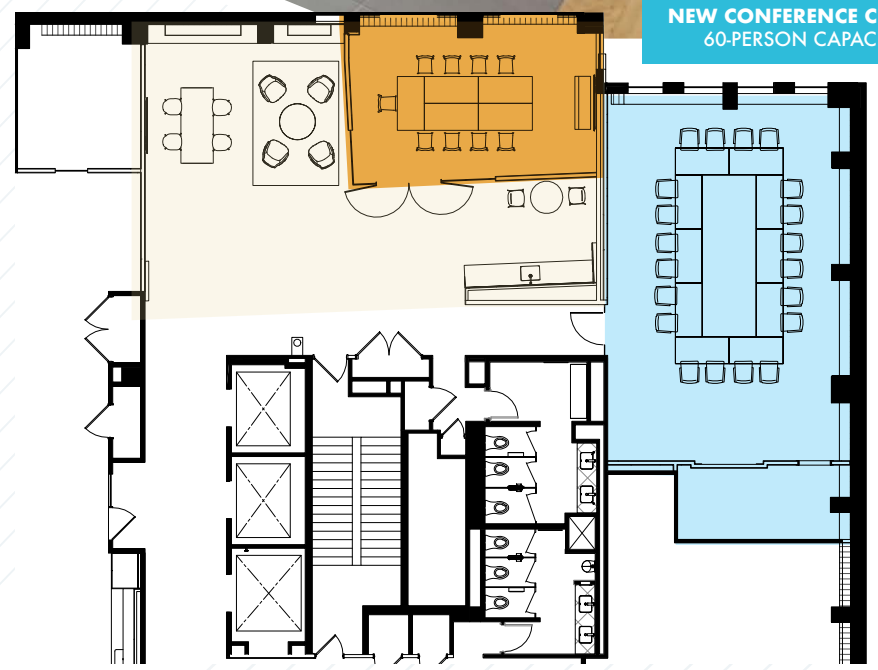
## MULTI-FACETED CONFERENCE CENTER & TENANT LOUNGE

Recently Delivered

TENANT LOUNGE &  
COFFEE BAR

EXECUTIVE BOARD ROOM  
12-PERSON

NEW CONFERENCE CENTER  
60-PERSON CAPACITY





# WELCOME TO YOUR NEW OFFICE.

## SPEC SUITES:

### 10TH FLOOR >>

SPEC SUITE 1010 3,837 SF

### 9TH FLOOR >>

SPEC SUITE 900 2,570 SF

SPEC SUITE 910 2,314 SF

SPEC SUITE 920 3,393 SF

SPEC SUITE 930 1,919 SF



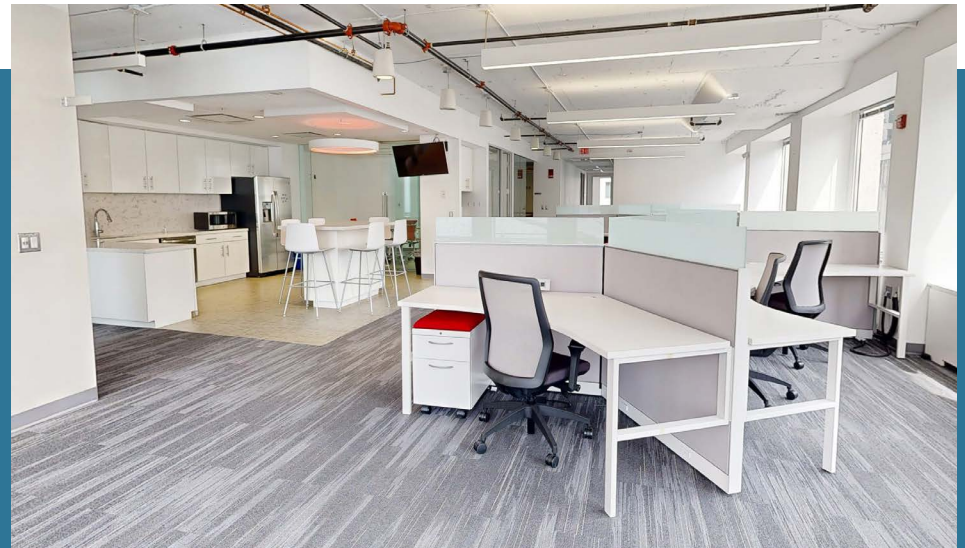
## MOVE-IN READY SUITES:

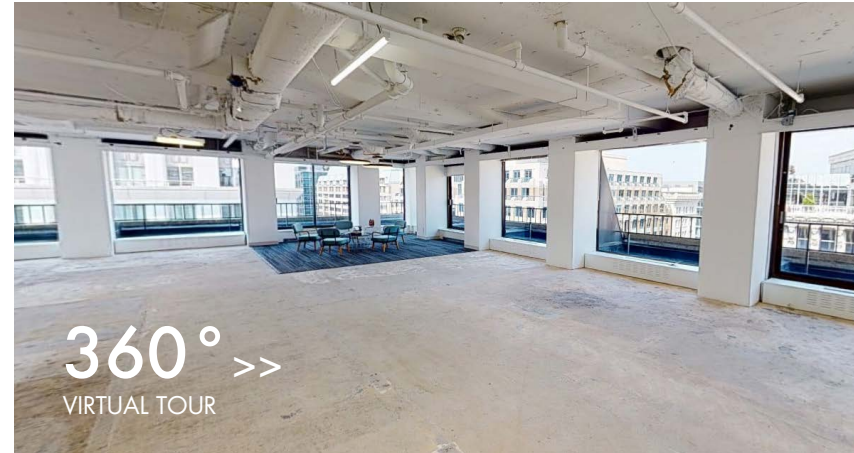
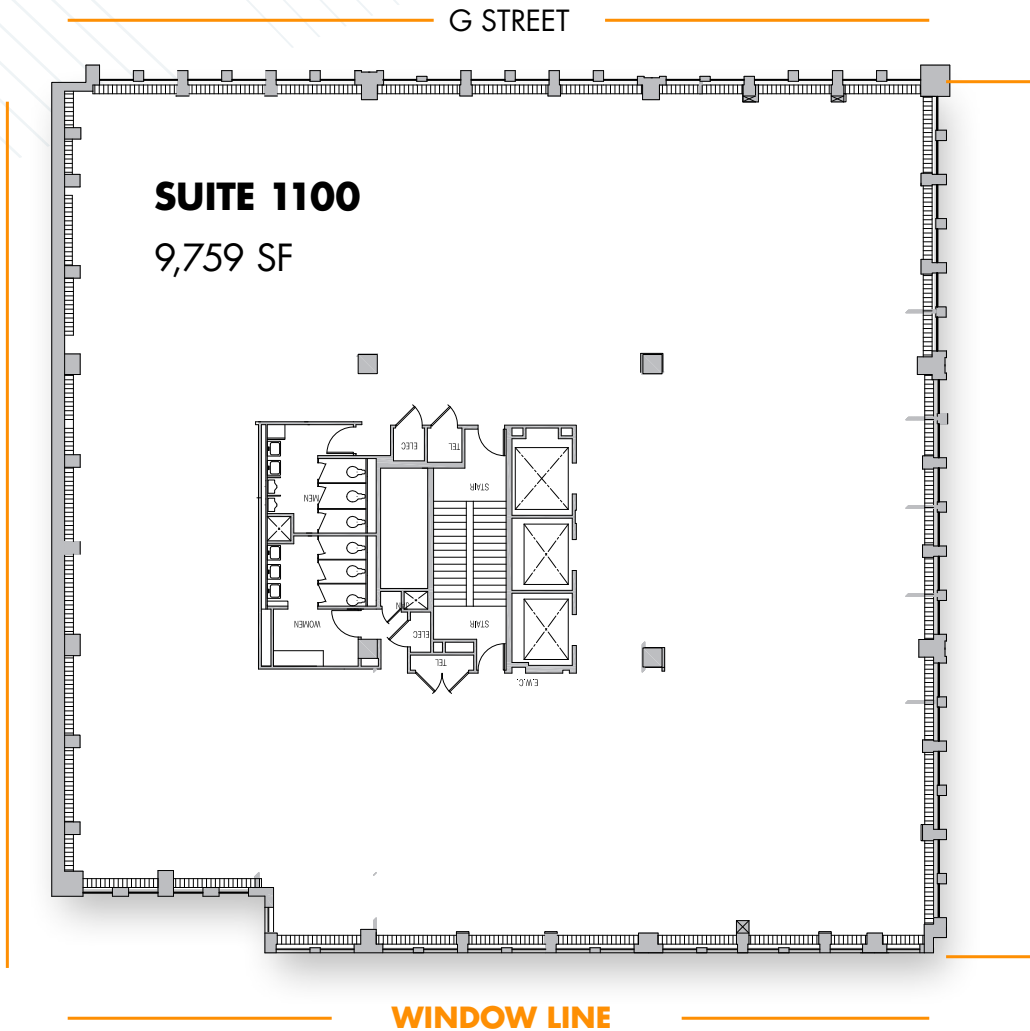
### 8TH FLOOR >>

SUITE 805 5,912 SF

### 5TH FLOOR >>

SUITE 535 3,239 SF

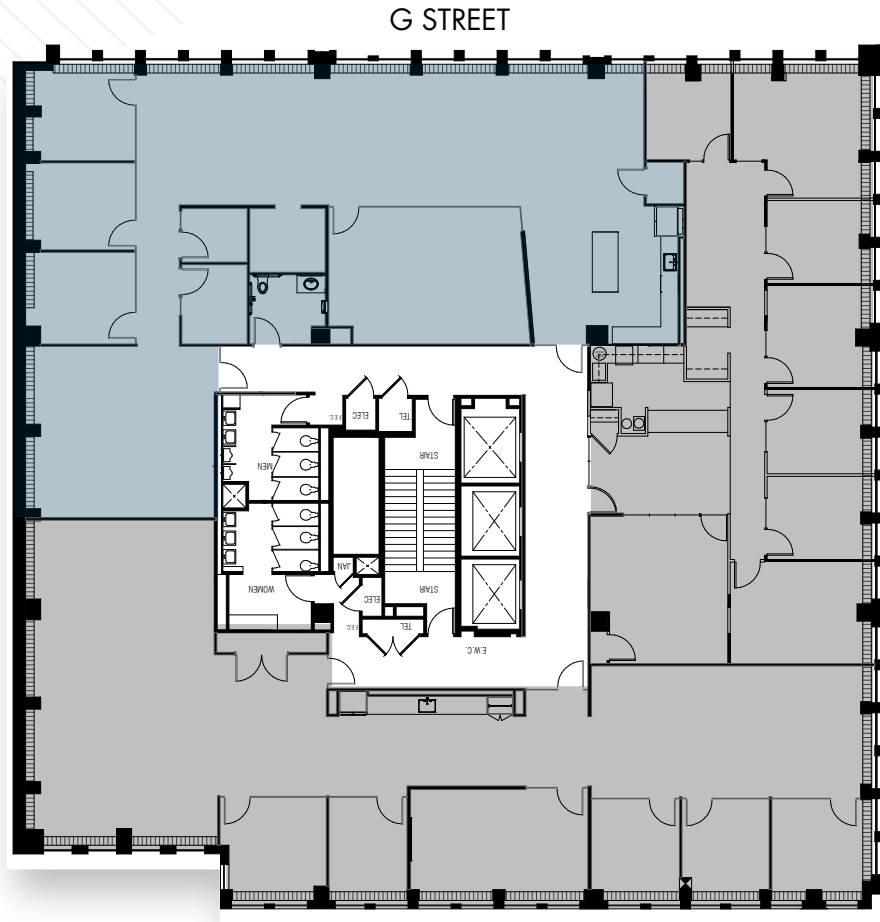




11TH STREET

## Top Floor. With a View.

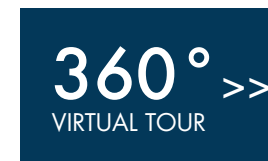
Full floor available in shell condition with terrific window lines.



### Spec Suite 1010 3,837 SF

Available Immediately

Prime window line overlooking G Street and direct elevator exposure. Mostly open plan with featuring three interior offices, two huddle/zoom rooms, large conference room, pantry, and two bullpen areas for open work stations.



11TH STREET

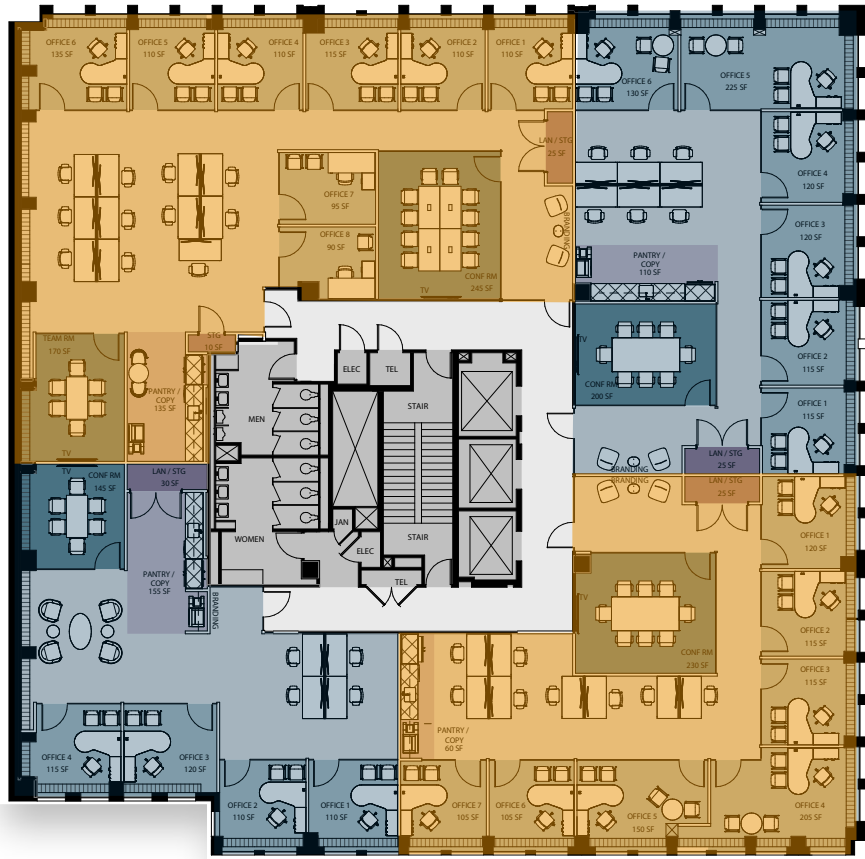


## 9TH FLOOR SPEC SUITES

**SUITE 920**  
3,393 SF

G STREET

**SUITE 910**  
2,314 SF



**SUITE 930**  
1,919 SF

**SUITE 900**  
2,570 SF

11TH STREET



Sample Finishes

# Spec Suites Delivering 10/2026.

**Suite 900** 2,570 SF

Seven offices, conference room  
& eight workstations.

**Suite 910** 2,314 SF

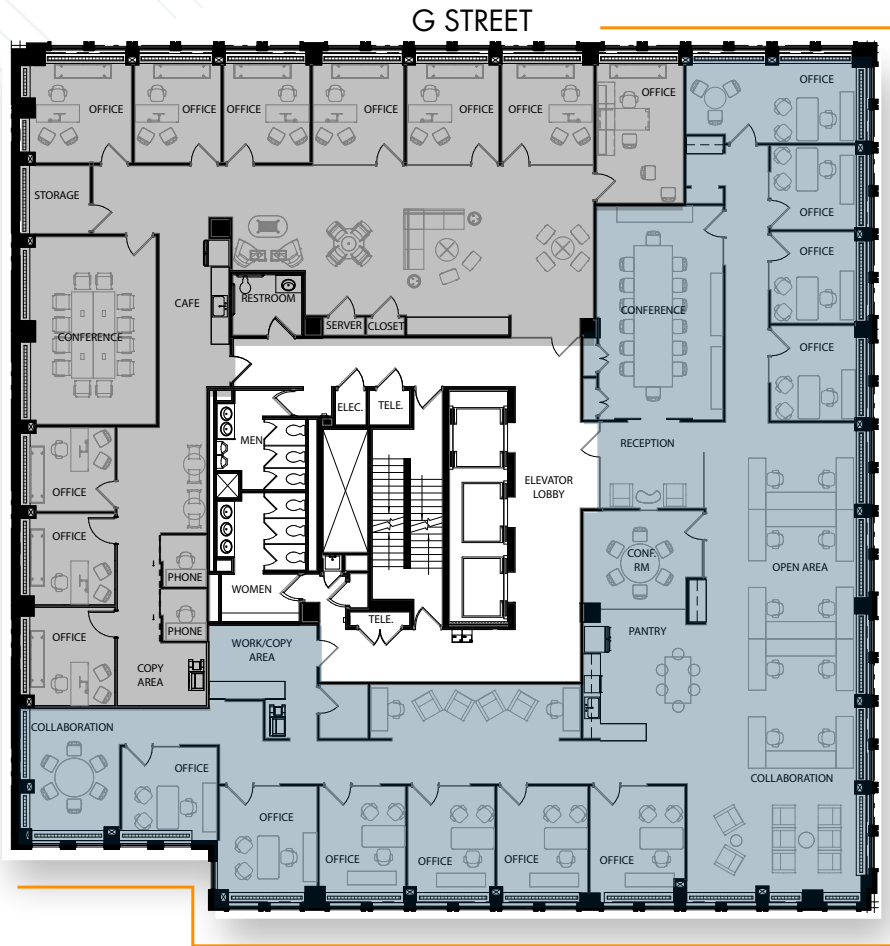
Six offices, conference room  
& six workstations.

**Suite 920** 3,393 SF

Eight offices, conference room  
& eleven workstations.

**Suite 930** 1,919 SF

Four offices, conference room  
& four workstations.



G STREET

11TH STREET

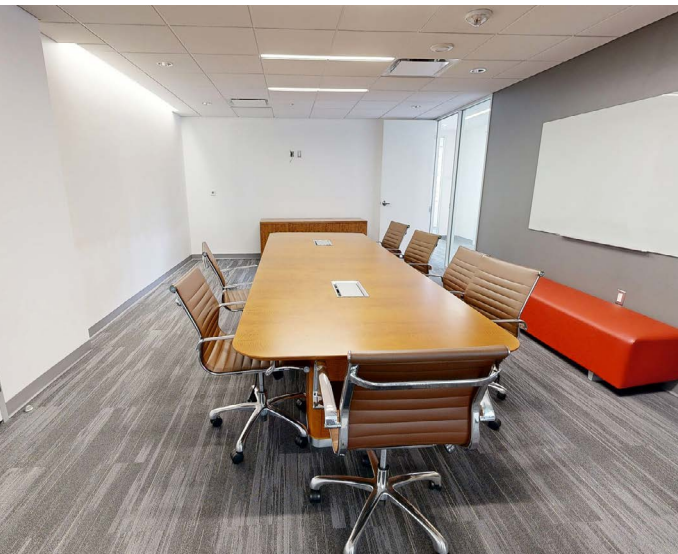
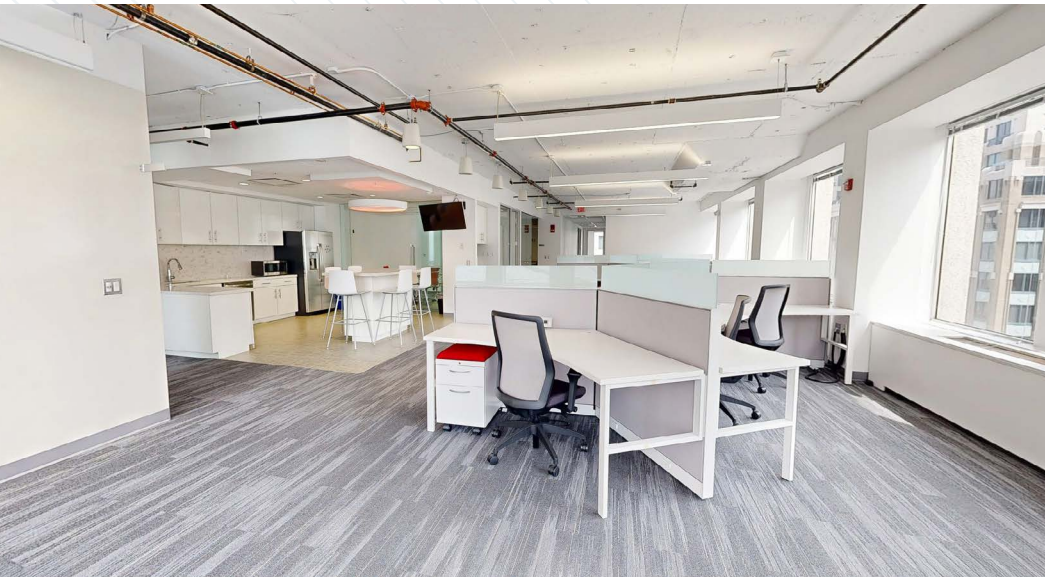
WINDOW LINE

**Suite 805** 5,912 SF

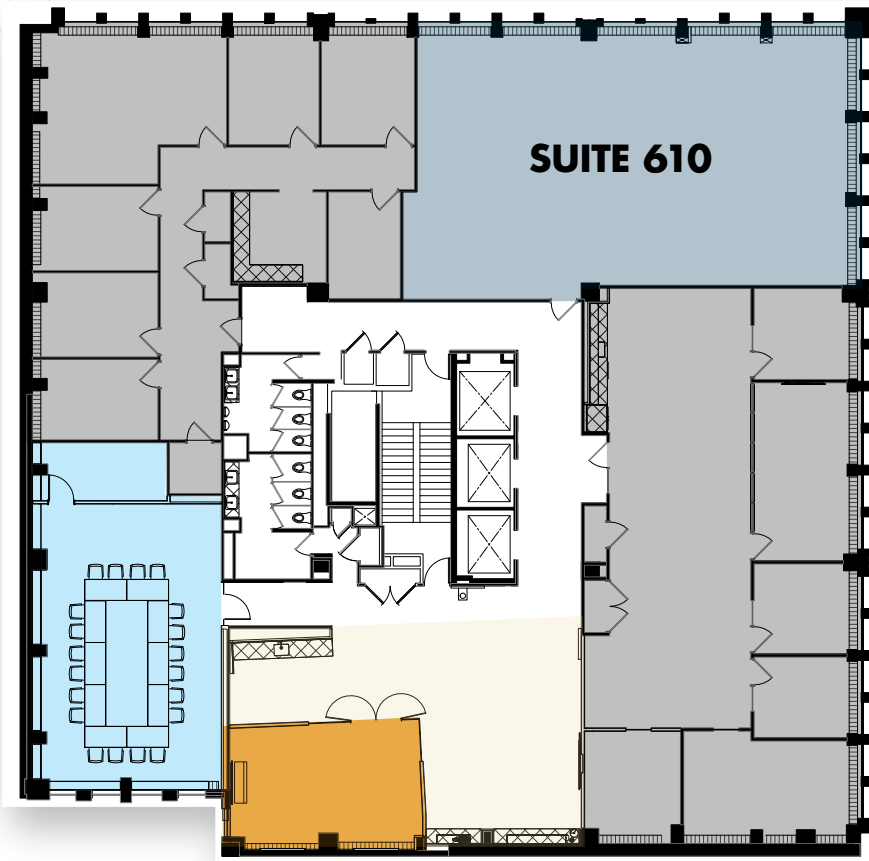
**Available Immediately**

Fully furnished space on the front of the building with three sides of glass

**360° >>**  
VIRTUAL TOUR



G STREET



11TH STREET

### Suite 610 2,218 SF

#### Available Immediately

Small suite available on the front corner of the building on the same floor as the tenant lounge + conference facility. Turnkey opportunity for late 2026 occupancy. Direct elevator exposure.

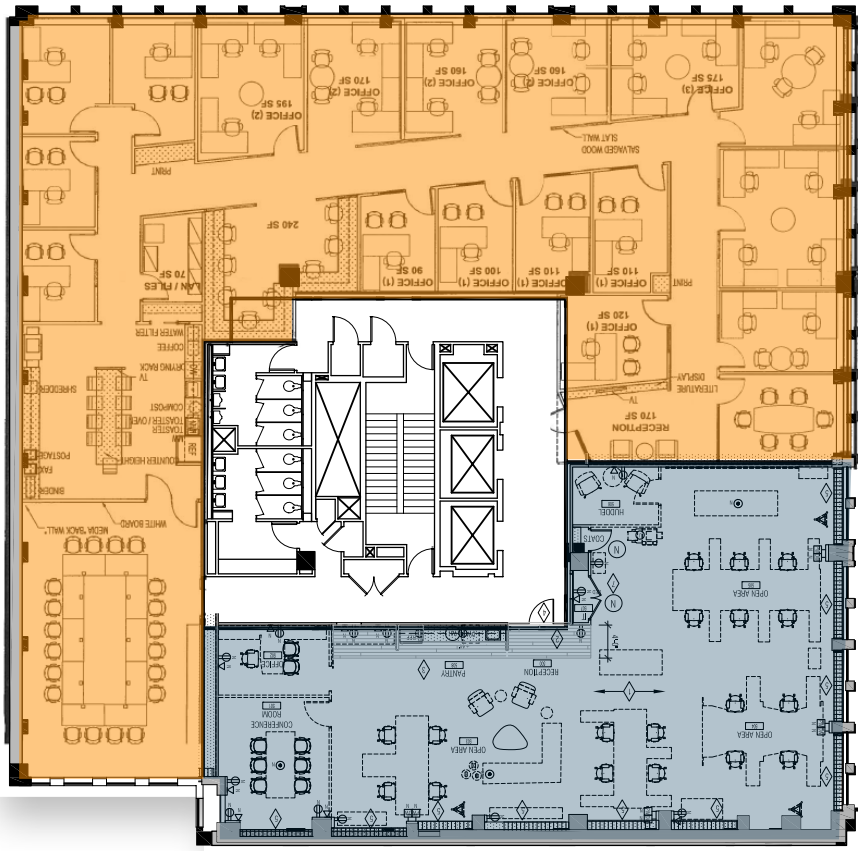
**NEW CONFERENCE CENTER**  
60-PERSON CAPACITY

**EXECUTIVE BOARD ROOM**  
12-PERSON

**TENANT LOUNGE & COFFEE BAR**

### SUITE 500

G STREET



### SUITE 535

### Suite 500 6,904 SF

Available Immediately

Built-out space overlooking 11th and G Streets with direct elevator exposure. Office-intensive build out with large conference room in place.

360° >>  
VIRTUAL TOUR

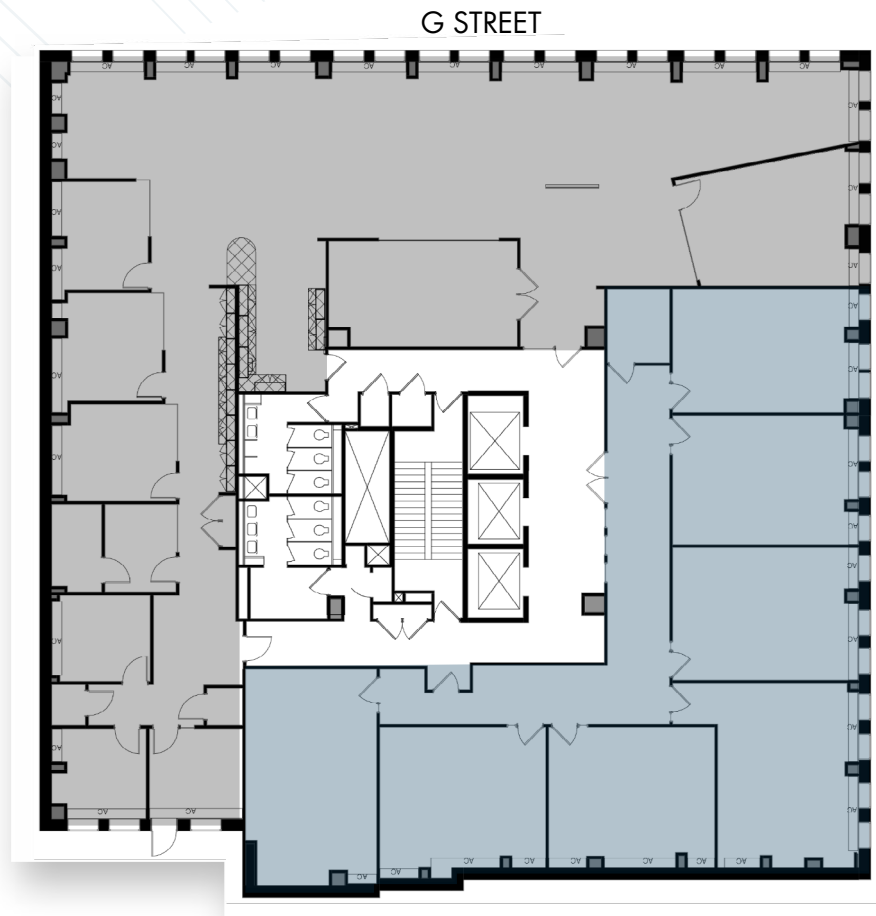
### Suite 535 5,912 SF

Available Immediately

Open space plan with direct elevator exposure on the front of the building. Existing build-out has very high-end finishes with an eightperson conference room, two private offices and pantry.

360° >>  
VIRTUAL TOUR

11TH STREET



### Suite 300 4,190 SF

---

#### Available Immediately

Plug-and-play opportunity for an educational user. Space overlooks 11th Street with direct elevator exposure. Seven classrooms existing with supplemental HVAC in-place.

11TH STREET

# 1100G

## OFFICE LEASING 202.513.6700

---

<b>Merrill Turnbull</b>	<a href="mailto:mturnbull@lpc.com">mturnbull@lpc.com</a>	202.513.6713
<b>Adam Biberaj</b>	<a href="mailto:abiberaj@lpc.com">abiberaj@lpc.com</a>	202.513.6736
<b>Tim Whitebread</b>	<a href="mailto:twhitebread@lpc.com">twhitebread@lpc.com</a>	202.513.6712

**MCRE**  
PARTNERS

# Lincoln

101 Constitution Avenue NW | Suite 325 East  
Washington, DC 20001  
[www.lpc.com](http://www.lpc.com)