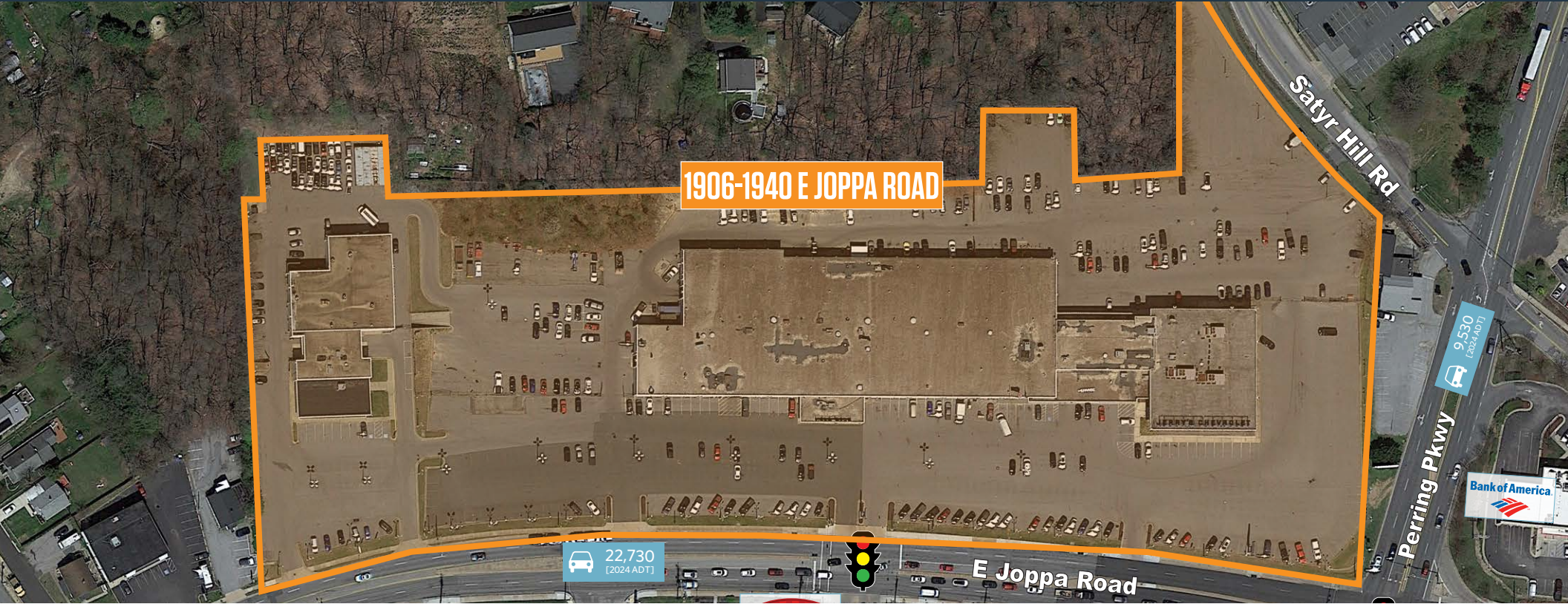




1906-1940 E JOPPA ROAD

PARKVILLE, MD 21234, BALTIMORE COUNTY



NEARBY RETAILERS



RETAIL FOR LEASE

- ±15 Acre Site - Zoned BM & BM AS.
- Rare opportunity located at the intersection of E Joppa Road & Perring Parkway.
- Multiple configurations and pad sites available for lease on-site. We can also consider leasing the existing 94,588 SF & 21,320 SF freestanding dealership buildings.
- Easy and convenient access to Interstate 695 (I-695) Beltway.
- Perfect for gas/c-store, pharmacy, fast-food, bank/financial services, restaurant, medical, retail, grocery, hotel, automotive/ car dealerships, flex and industrial.

JOE BOTZLER

jbotzler@klnb.com | 410-266-2703

JEFF BACH

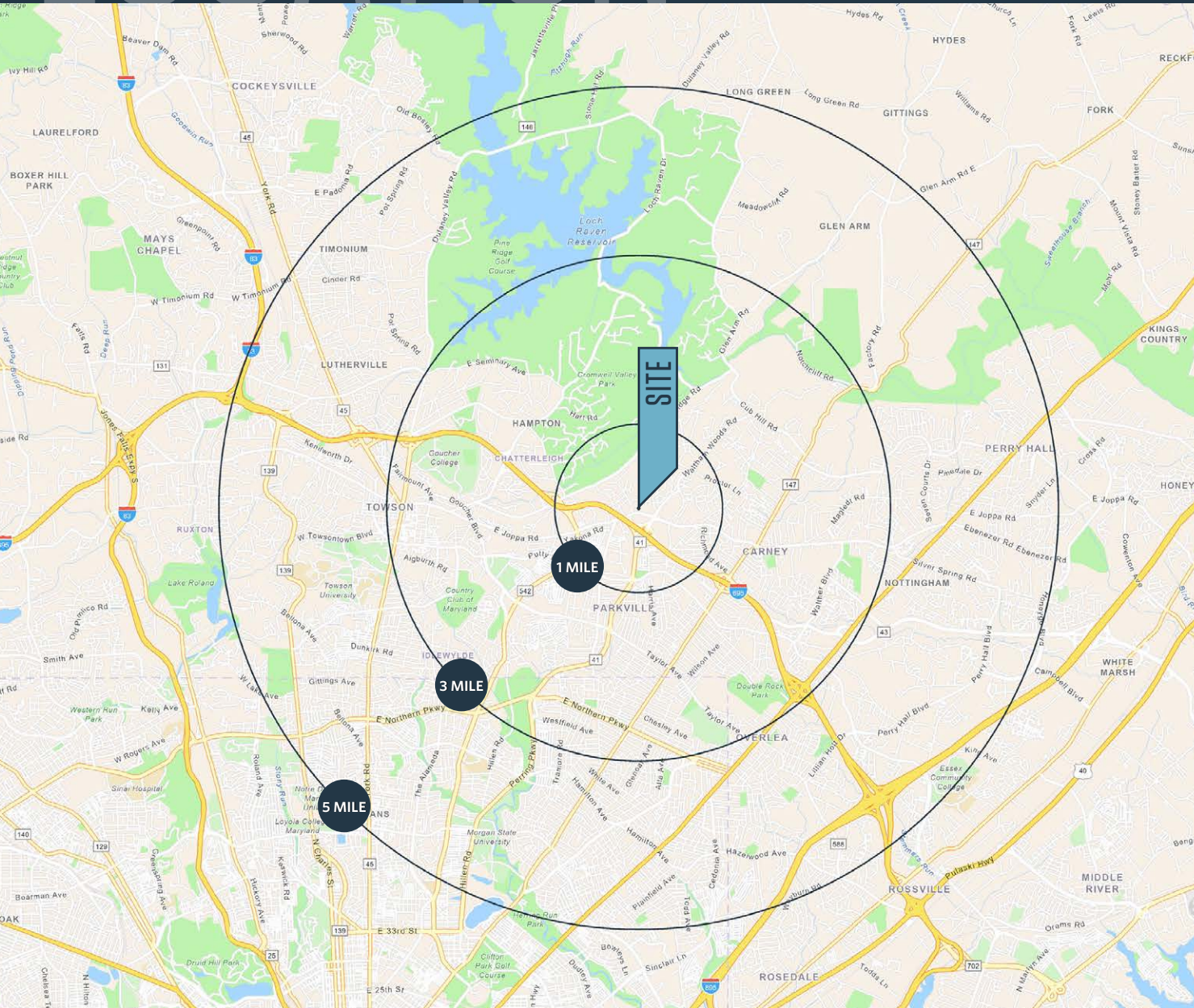
jbach@klnb.com | 410-357-6944

klnb.com

LOCATION

1906-1940 E JOPPA ROAD

PARKVILLE, MD 21234, BALTIMORE COUNTY



DEMOGRAPHICS | 2025:

1-MILE	3-MILE	5-MILE
Population		
12,328	111,713	295,803
Daytime Population		
11,561	100,718	271,135
Households		
5,037	47,722	119,327
Average HH Income		
\$96,875	\$106,568	\$115,430

[CLICK TO DOWNLOAD DEMOGRAPHIC REPORT](#)

TRAFFIC COUNTS | 2024:

E Joppa Road	22,730 ADT
Perring Pkwy	34,503 ADT
I-695	149,011 ADT

JOE BOTZLER

jbotzler@klnb.com | 410-266-2703

JEFF BACH

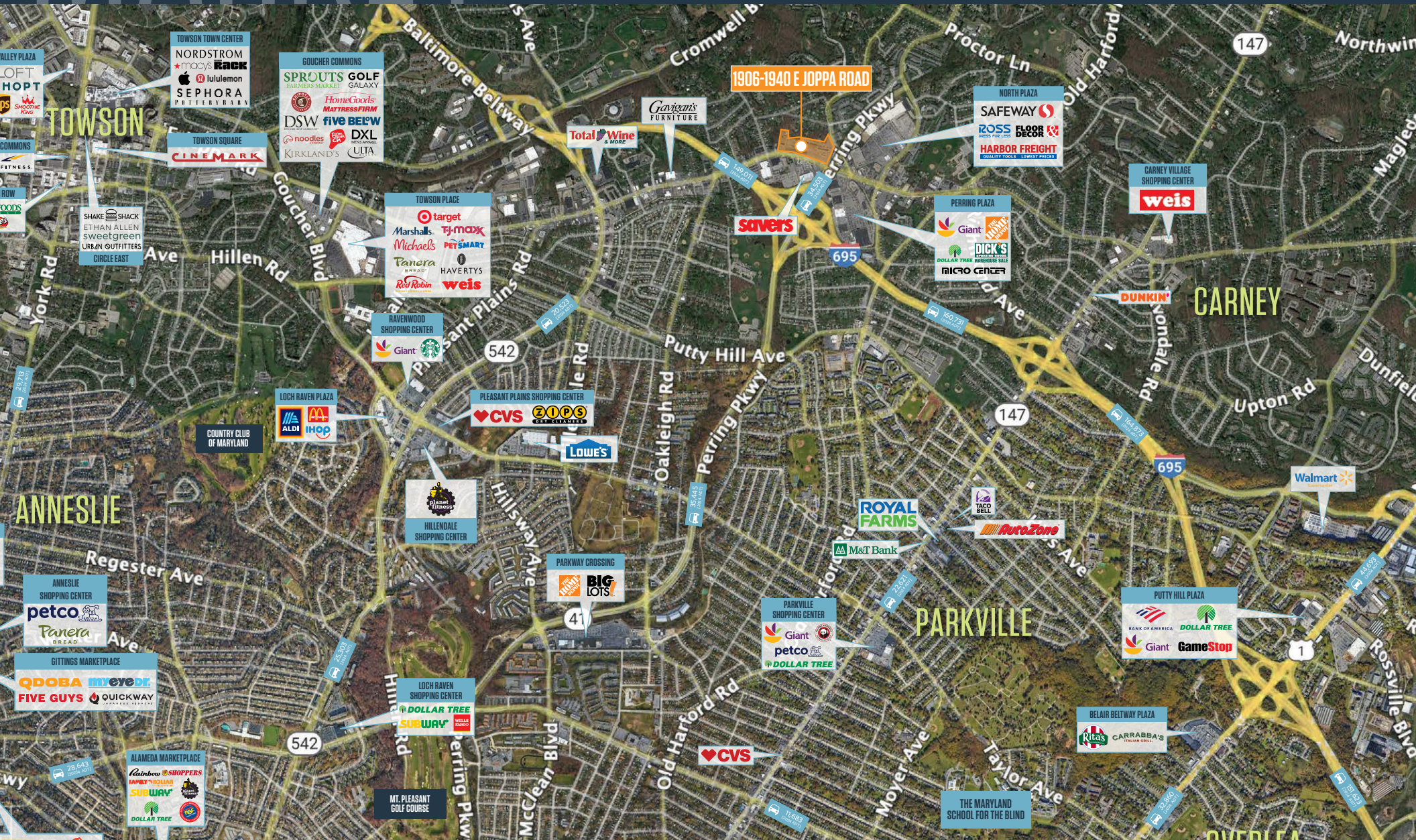
jbach@klnb.com | 410-357-6944



MARKET

1906-1940 E JOPPA ROAD

PARKVILLE, MD 21234, BALTIMORE COUNTY



JOE BOTZLER

jbotzler@klnb.com | 410-266-2703

JEFF BACH

jbach@klnb.com | 410-357-6944



1906-1940 E JOPPA ROAD

PARKVILLE, MD 21234, BALTIMORE COUNTY



JOE BOTZLER

jbotzler@klnb.com | 410-266-2703

JEFF BACH

jbach@klnb.com | 410-357-6944

CLOSE-UP

1906-1940 E JOPPA ROAD

PARKVILLE, MD 21234, BALTIMORE COUNTY



JOE BOTZLER

jbotzler@klnb.com | 410-266-2703

JEFF BACH

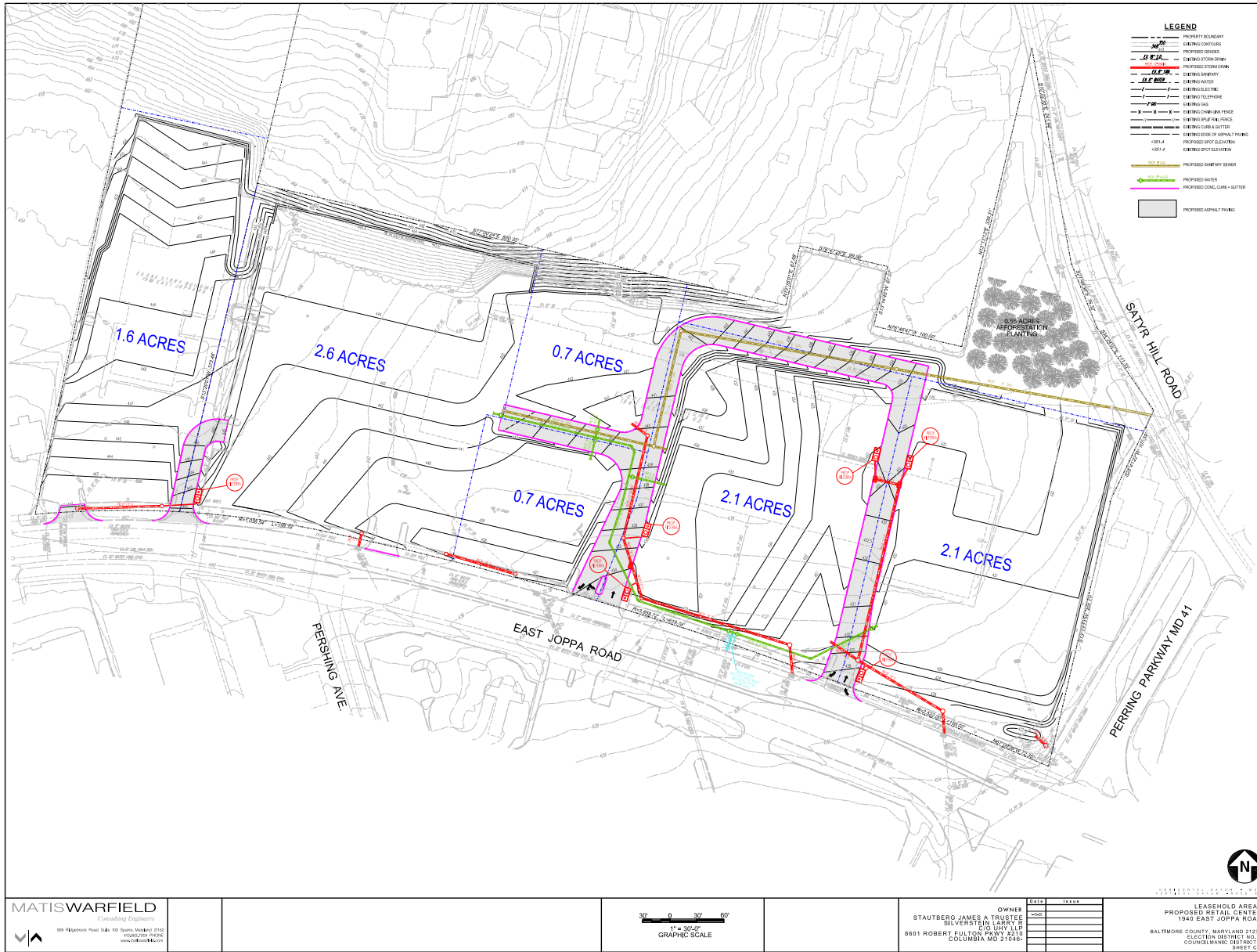
jbach@klnb.com | 410-357-6944

klnb

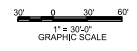
LEASEHOLD

1906-1940 E JOPPA ROAD

PARKVILLE, MD 21234, BALTIMORE COUNTY



MATISWARFIELD
 Consulting Engineers
 800 Hagerstown Road, Suite 100, Sparks, MD 21151
 410-253-7800
 www.matiswarfield.com



OWNER
 STAUBERG, JAMES A TRUSTEE
 SILVERSTEIN LARRY S
 C/O UHY LLP
 8601 ROBERT FULTON PARKWAY #210
 COLUMBIA MD 21046

DATE	ISSUE

JOE BOTZLER
 jbotzler@klnb.com | 410-266-2703

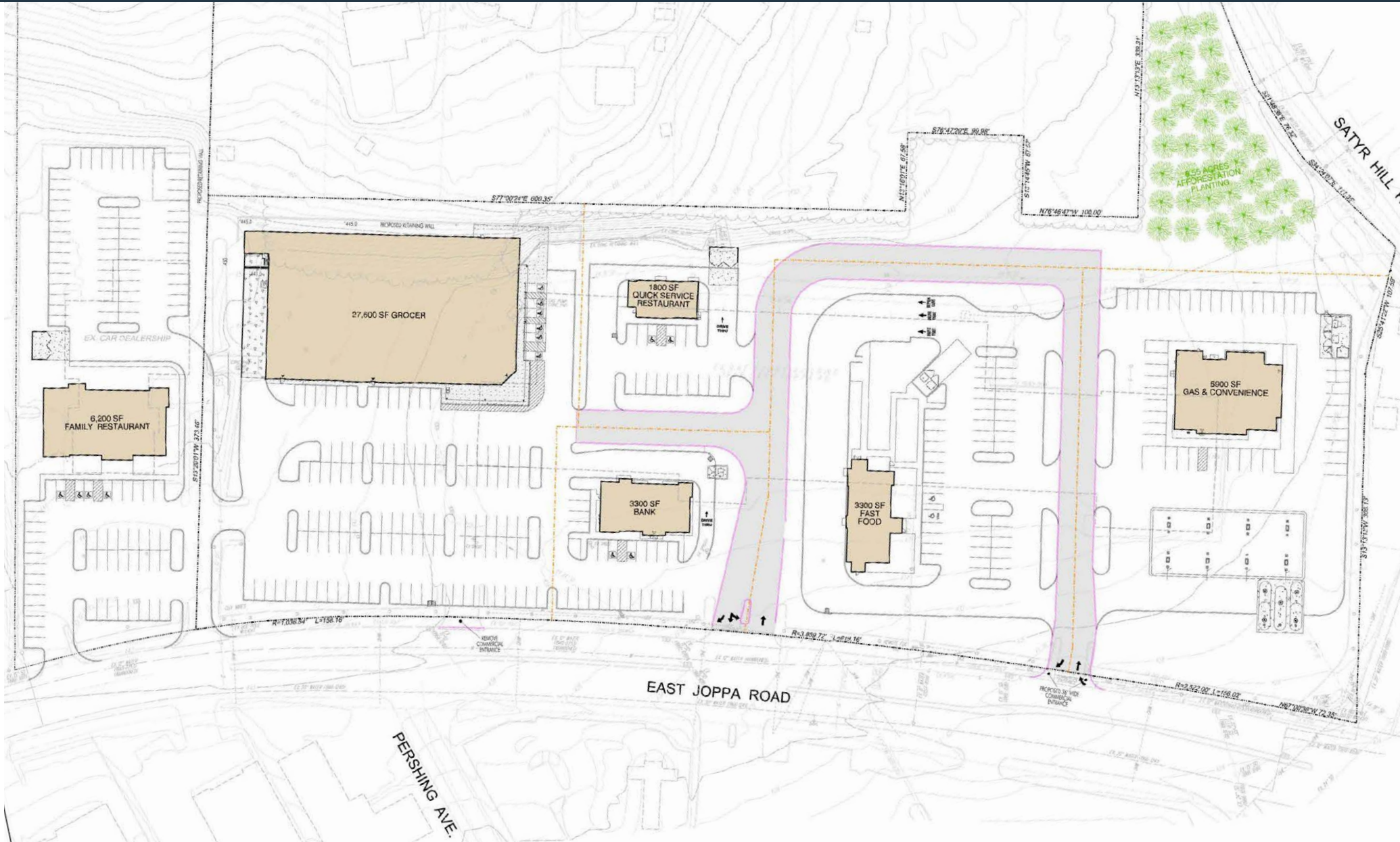
JEFF BACH
 jbach@klnb.com | 410-357-6944



CONCEPT B

1906-1940 E JOPPA ROAD

PARKVILLE, MD 21234, BALTIMORE COUNTY



JOE BOTZLER

jbotzler@klnb.com | 410-266-2703

JEFF BACH

jbach@klnb.com | 410-357-6944





1906-1940 E JOPPA ROAD

PARKVILLE, MD 21234, BALTIMORE COUNTY

FOR MORE INFORMATION, PLEASE CONTACT:

JOE BOTZLER

jbotzler@klnb.com

410-266-2703

JEFF BACH

jbach@klnb.com

410-357-6944

100 West Road, Suite 505, Towson, MD 21204

klnb.com



[instagram.com/klnbcre](https://www.instagram.com/klnbcre)



[linkedin.com/company/klnb](https://www.linkedin.com/company/klnb)



[facebook.com/KLNBCRE](https://www.facebook.com/KLNBCRE)

[CLICK TO VIEW PROPERTY WEBSITE](#)

While we have no reason to doubt the accuracy of any of the information supplied, we cannot, and do not, guarantee its accuracy. All information should be independently verified prior to a purchase or lease of the property. We are not responsible for errors, omissions, misuse, or misinterpretation of information contained herein and make no warranty of any kind, express or implied, with respect to the property or any other matters.