

19,133 SF AVAILABLE FOR LEASE

5040 N. RIVER RD

SCHILLER PARK, IL



GREAT LOCATION OPPORTUNITY!



BUILDING HIGHLIGHTS

19,133 SF

TOTAL
AVAILABLE

1

EXTERIOR DOCK
(RECESSED)

14'

CLEAR HEIGHT
(TO BOTTOM OF TRUSS)

+/-55

CAR
PARKING

5/1/2026

OCCUPANCY

6,400 SF

HVAC
(RETAIL AREA)

7

DRIVE-IN
DOORS

**400 AMPS, 120/240
VOLTS, 3-PHASE**

POWER

I-1

ZONING

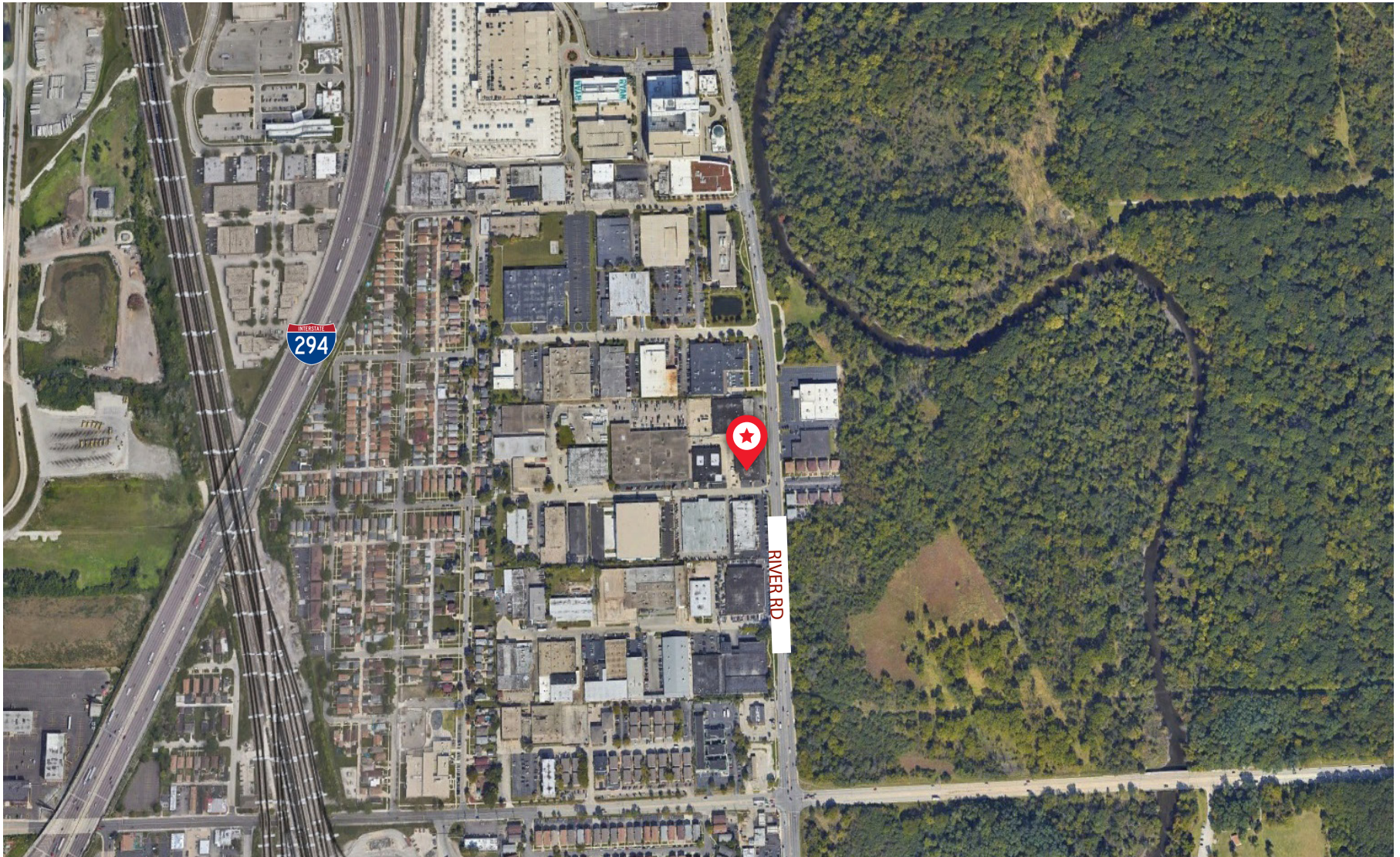
\$16.00/SF MG

ASKING RATE



THE LOCATION

- River Road Frontage
- Close to the Rosemont Convention Center, the Entertainment District, major expressways & public transportation



FOR MORE INFORMATION, PLEASE CONTACT:

NICK SARACENO

+1 847 331 1339

nick.saraceno@cushwake.com

STEVE AARONSON

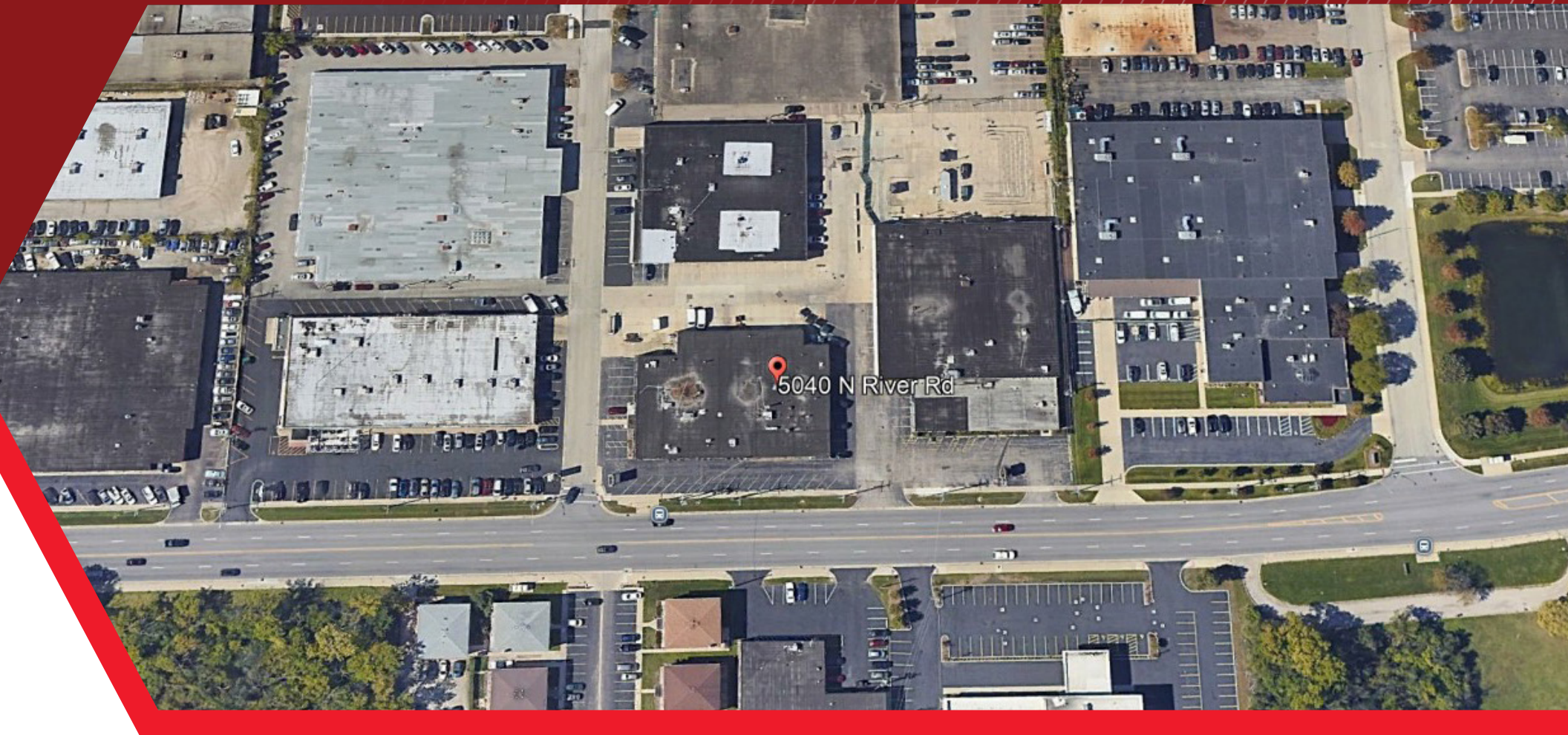
+1 312 339 2220

steve.aaronson@cushwake.com

HOWARD CAPLAN

+1 312 337 4052

howard.caplan@cushwake.com



©2026 Cushman & Wakefield. All rights reserved. The information contained in this communication is strictly confidential. This information has been obtained from sources believed to be reliable but has not been verified. NO WARRANTY OR REPRESENTATION, EXPRESS OR IMPLIED, IS MADE AS TO THE CONDITION OF THE PROPERTY (OR PROPERTIES) REFERENCED HEREIN OR AS TO THE ACCURACY OR COMPLETENESS OF THE INFORMATION CONTAINED HEREIN, AND SAME IS SUBMITTED SUBJECT TO ERRORS, OMISSIONS, CHANGE OF PRICE, RENTAL OR OTHER CONDITIONS, WITHDRAWAL WITHOUT NOTICE, AND TO ANY SPECIAL LISTING CONDITIONS IMPOSED BY THE PROPERTY OWNER(S). ANY PROJECTIONS, OPINIONS OR ESTIMATES ARE SUBJECT TO UNCERTAINTY AND DO NOT SIGNIFY CURRENT OR FUTURE PROPERTY PERFORMANCE.

