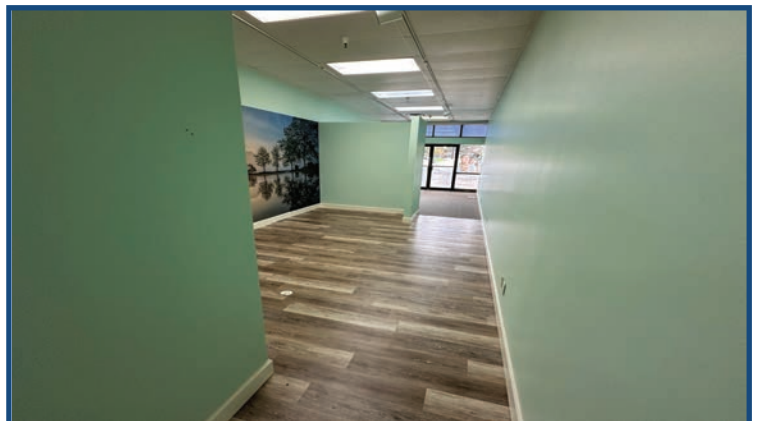


**3125 28th Street
Boulder, Colorado**

960 Square Feet

Retail Space Available!

- Join the Synergetic mix of tenant in the Tebo Shopping Center!
- Easily accessible from the Diagonal (Hwy 119) & US-36
- Excellent visibility from 28th Street
- Tons of Auto Traffic
- Complex is Modern, Stylish, Well Maintained
- Large storefront windows provide ample natural light
- Abundant on-site customer parking available
- Neighboring tenants include Cosmos, Rags and Glacier
- Building signage available



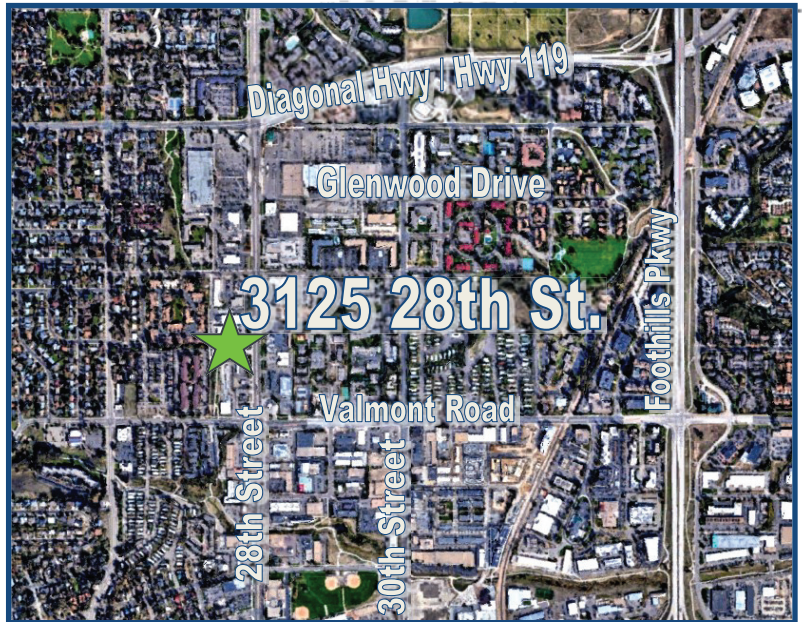
TEBO
PROPERTIES

Contact us for more information:
leasing@teboproperties.com
303-447-8326
www.TEBOproperties.com

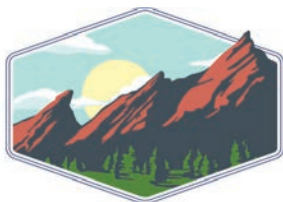
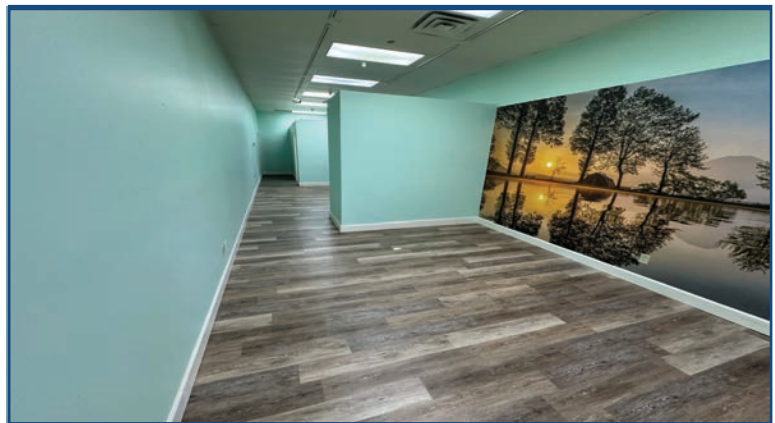


TEBO
PROPERTIES

3125 28th Street



Unit	Square Footage	Price
3125	960 SF	\$35.00/SF + \$8.88 (NNN) = \$3,510.40/ MONTHLY



TEBO
PROPERTIES

Contact us for more information:
leasing@teboproperties.com
 303-447-8326
www.TEBOproperties.com