

# 7127

## KEYSTONE STREET PHILADELPHIA, PENNSYLVANIA

Between Princeton & Cottman Avenues

RETAIL FOR LEASE

**APPROXIMATE SIZE**  
10,000 SF

**ASKING RENT**  
Upon Request

**TERM**  
Negotiable

**POSSESSION**  
Immediate

**FRONTAGE**  
100 FT

### COMMENTS

- Located at the base of The Keys, a brand-new, 97% leased residential building
- Raw condition allowing for a customized tenant buildout
- Convenient access to I-95, Cottman Avenue, State Road, and Torresdale Avenue
- Positioned to serve Tacony, Wissinoming, Mayfair, and the broader Northeast Philadelphia trade area
- Ideal for fitness, medical, daycare, grocery, pet care, showroom, and other neighborhood-serving uses

### NEIGHBORS

The Keys • Muse Studio • Excel Plumbing Heating & Air • Bombshell Hair Studio • Evolution Auto Haus • Pizza Time • Jack's Place • New Neighbor Food Market • Hope Hall • Sunoco

### TRANSPORTATION



### ASHLYN LORENTZ

Associate  
212.468.5954  
alorentz@meridiancapital.com



**MERIDIAN**  
RETAIL LEASING

All information supplied is from sources deemed reliable and is furnished subject to errors, omissions, modifications, removal of the listing from sale or lease, and to any listing conditions, including the rates and manner of payment of commissions for particular offerings imposed by Meridian Capital Group. This information may include estimates and projections prepared by Meridian Capital Group with respect to future events, and these future events may or may not actually occur. Such estimates and projections reflect various assumptions concerning anticipated results. While Meridian Capital Group believes these assumptions are reasonable, there can be no assurance that any of these estimates and projections will be correct. Therefore, actual results may vary materially from these estimates and projections. Any square footage dimensions set forth are approximate.

# 7127 KEYSTONE STREET

PHILADELPHIA, PENNSYLVANIA | Between Princeton and Cottman Avenues

RETAIL FOR LEASE



INTERIOR

ASHLYN LORENTZ

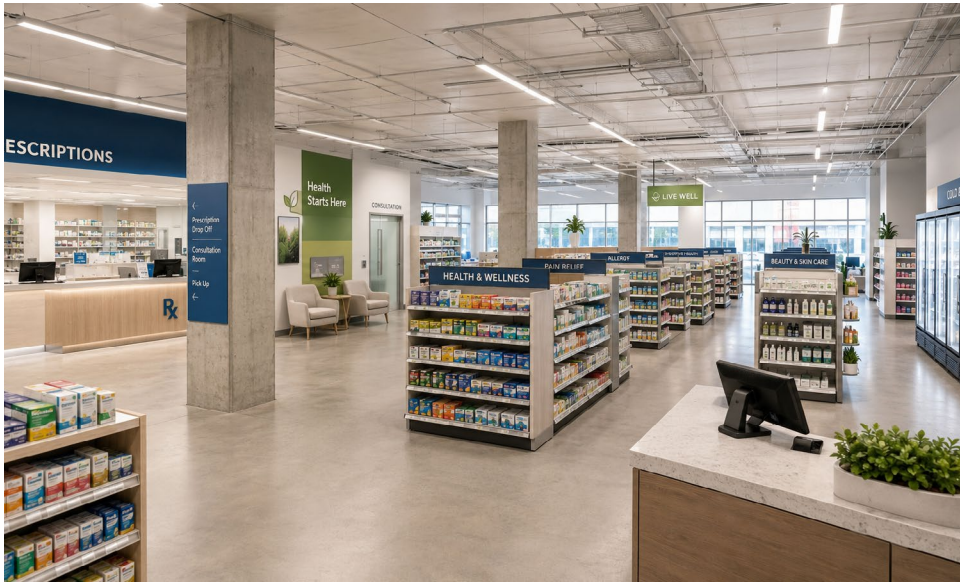
Associate  
212.468.5954  
alorentz@meridiancapital.com



**MERIDIAN**  
RETAIL LEASING

All information supplied is from sources deemed reliable and is furnished subject to errors, omissions, modifications, removal of the listing from sale or lease, and to any listing conditions, including the rates and manner of payment of commissions for particular offerings imposed by Meridian Capital Group. This information may include estimates and projections prepared by Meridian Capital Group with respect to future events, and these future events may or may not actually occur. Such estimates and projections reflect various assumptions concerning anticipated results. While Meridian Capital Group believes these assumptions are reasonable, there can be no assurance that any of these estimates and projections will be correct. Therefore, actual results may vary materially from these estimates and projections. Any square footage dimensions set forth are approximate.

INTERIOR | CONCEPTUAL RENDERINGS



ASHLYN LORENTZ  
Associate  
212.468.5954  
alorentz@meridiancapital.com



**MERIDIAN**  
RETAIL LEASING

