

FOR SALE

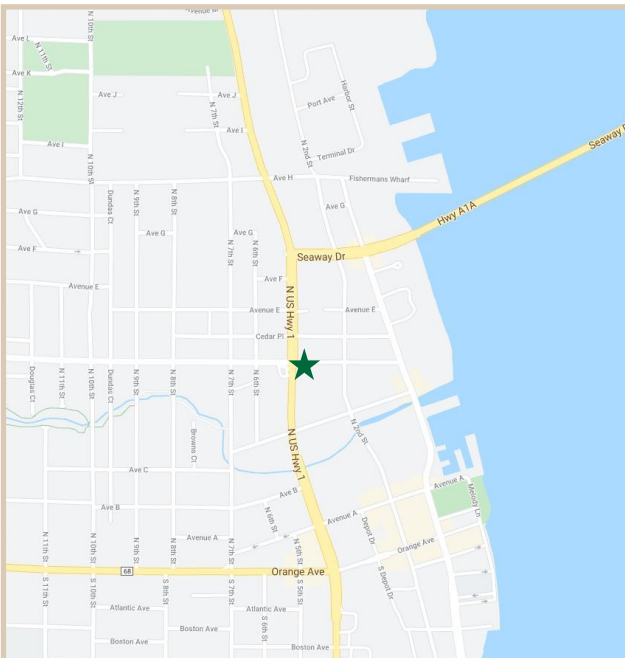
Seaway Plaza

600 North US Highway One, Fort Pierce, FL 34950

PROPERTY FACTS

Building Area:	19,183 Sq. Ft.
Property Configuration:	249 Linear Feet on U.S. Highway One
Parcel Size:	.92 Acres
Year Built:	1920
Construction:	Concrete Block and Stucco
Zoning:	PU
Traffic Count:	31,262 AADT
Building Height:	Single Story
Use:	Retail/Office/Shopping Center

Listing Price: \$3,490,000



PROPERTY HIGHLIGHTS

Location:	At the intersection of U.S. Highway One and Seaway Drive. (Only Road to the South Hutchinson Island barrier island in Saint Lucie County.)
Visibility:	This property benefits from excellent visibility on U.S. Highway One, with 249 linear feet of building view.
Parking & Access	Parking is available in front of each unit, with additional parking on the sides and back of the building.



CHARLES A. VON STEIN, INC.
Commercial Property Management,
Sales & Leasing Specialists since 1963
626 Old Dixie Highway SW
Vero Beach, FL 32962
www.vscrc.com

CONTACT INFO:
Brevard County: 321.725.1961
Indian River County: 772.778.4885
Fax: 772.778.4908
Leasing: leasing@vscre.com

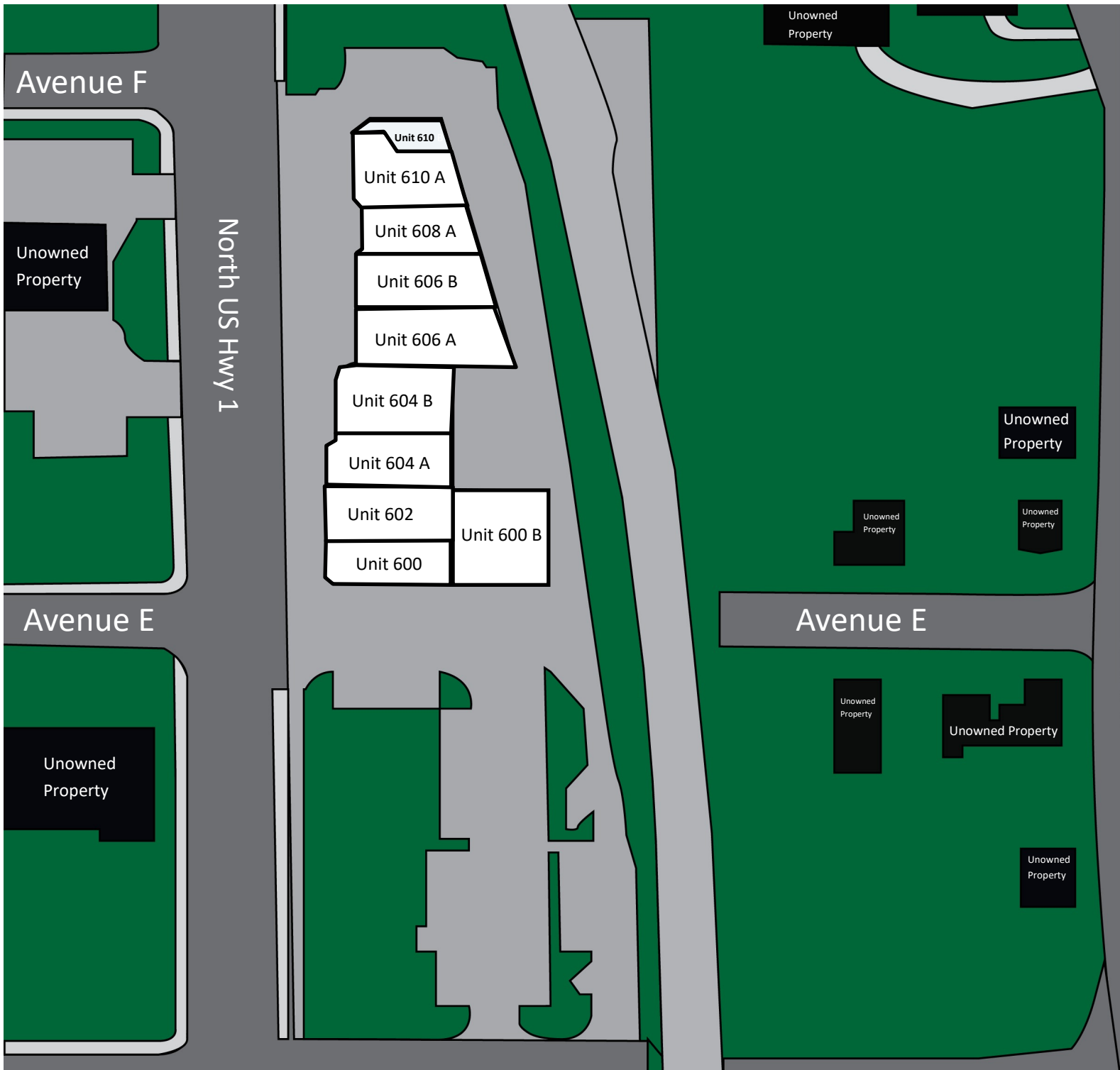
ALL INFORMATION FURNISHED REGARDING PROPERTY FOR SALE, RENTAL OR FINANCING SOURCES DEEMED RELIABLE, BUT NO WARRANTY OR REPRESENTATION IS MADE AS TO THE ACCURACY THEREOF AND SAME IS SUBMITTED SUBJECT TO ERRORS, OMISSIONS, CHANGE OF PRICE, RENTAL OR OTHER CONDITIONS, PRIOR SALE, LEASING OR FINANCING OR WITHDRAWAL WITHOUT NOTICE.

SITE PLAN

First Floor

Seaway Plaza

600 North US Highway One, Fort Pierce, FL 34950



CHARLES A. VON STEIN, INC.
Commercial Property Management,
Sales & Leasing Specialists since 1963
626 Old Dixie Highway SW
Vero Beach, FL 32962
www.vscre.com

CONTACT INFO:

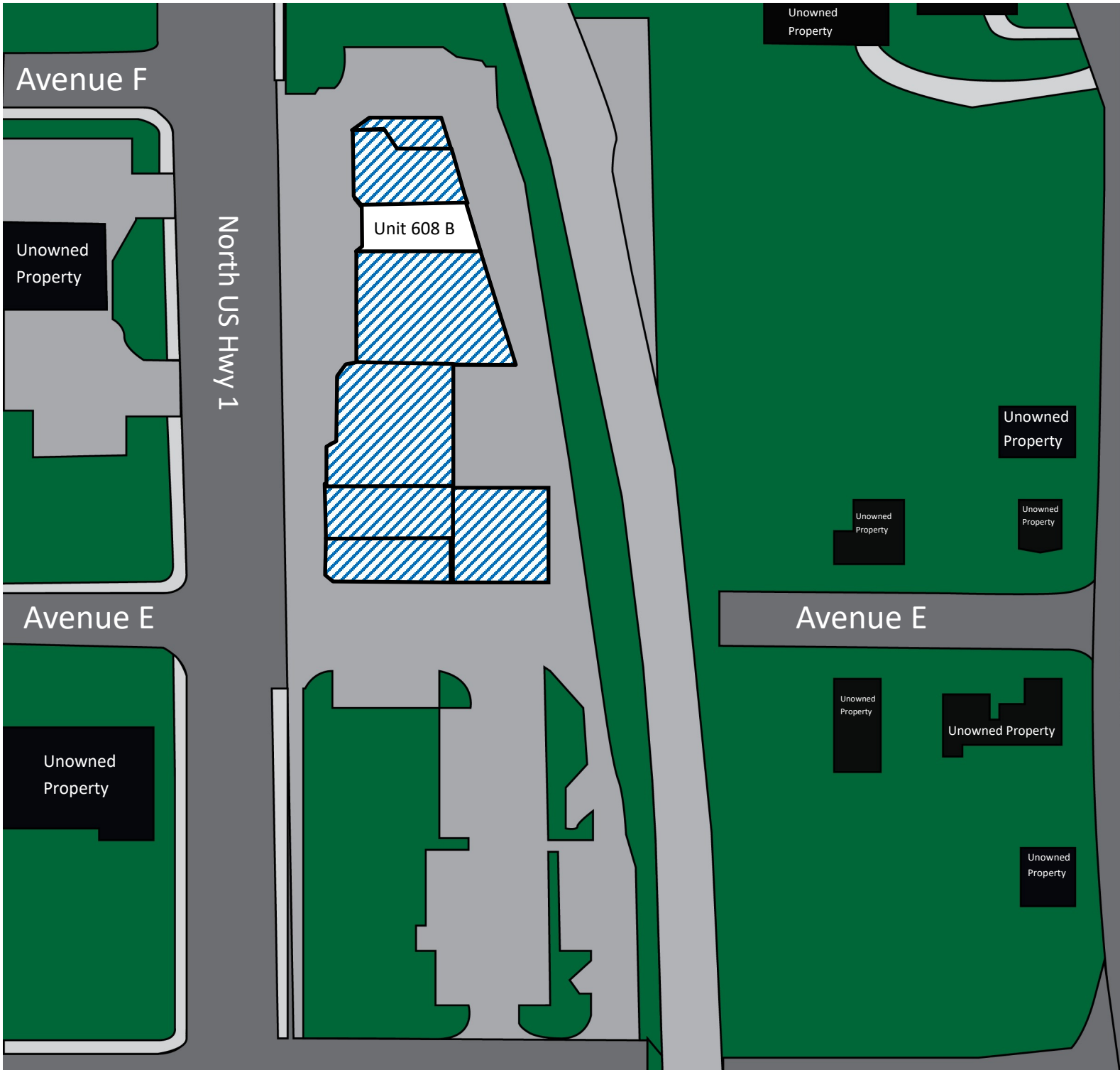
Brevard County: 321.725.1961
Indian River County: 772.778.4885
Fax: 772.778.4908
Leasing: leasing@vscre.com

SITE PLAN

Second Floor

Seaway Plaza

600 North US Highway One, Fort Pierce, FL 34950



CHARLES A. VON STEIN, INC.
Commercial Property Management,
Sales & Leasing Specialists since 1963
626 Old Dixie Highway SW
Vero Beach, FL 32962
www.vscre.com

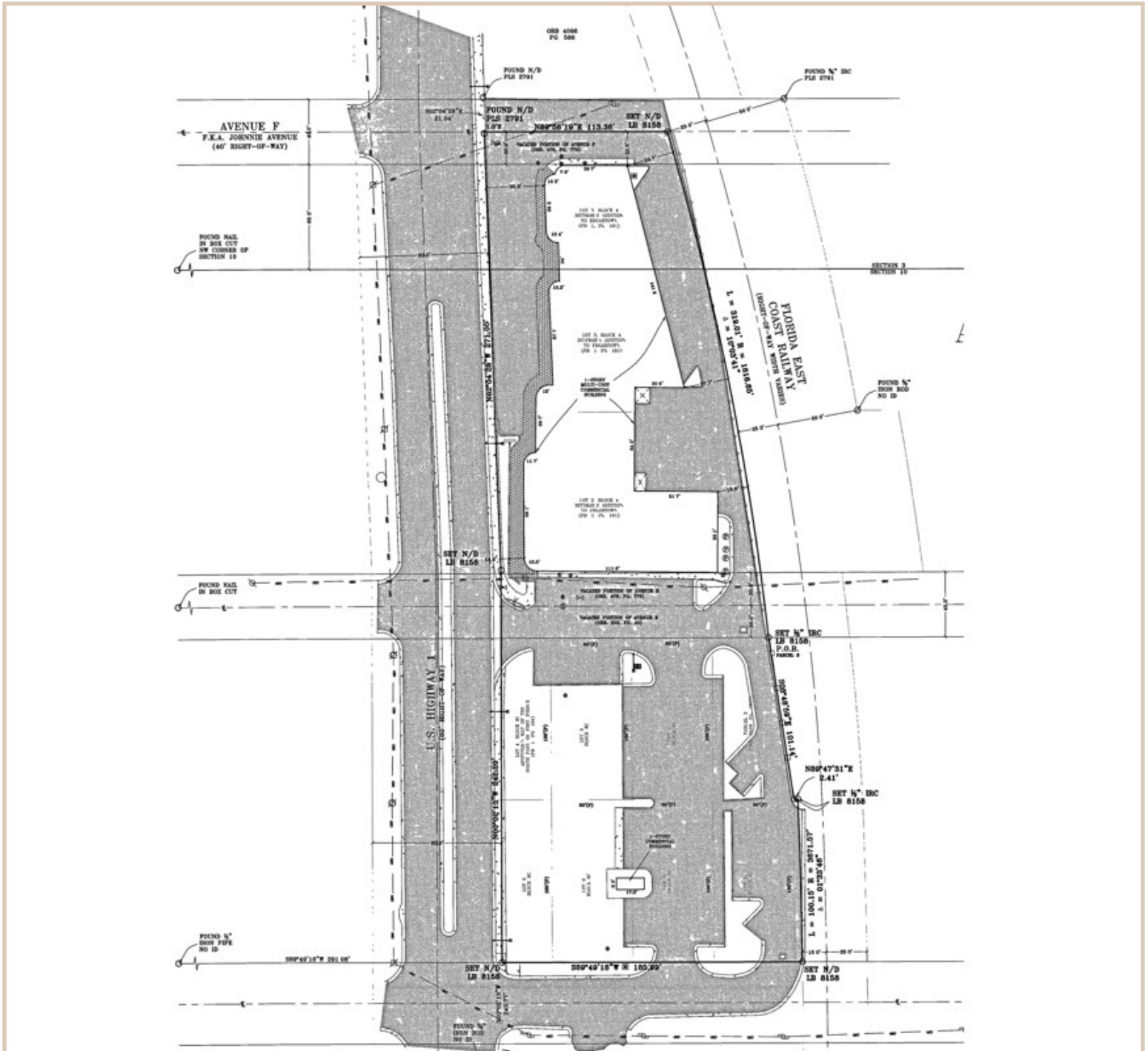
CONTACT INFO:

Brevard County: 321.725.1961
Indian River County: 772.778.4885
Fax: 772.778.4908
Leasing: leasing@vscre.com

SURVEY

Seaway Plaza

600 North US Highway One, Fort Pierce, FL 34950



CHARLES A. VON STEIN, INC.
Commercial Property Management,
Sales & Leasing Specialists since 1963
626 Old Dixie Highway SW
Vero Beach, FL 32962
www.vscre.com

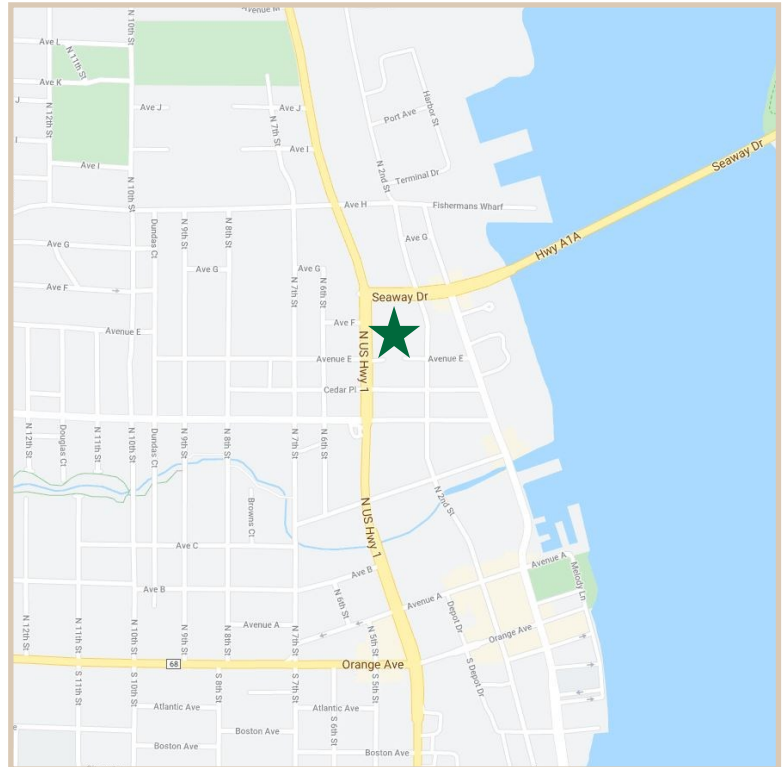
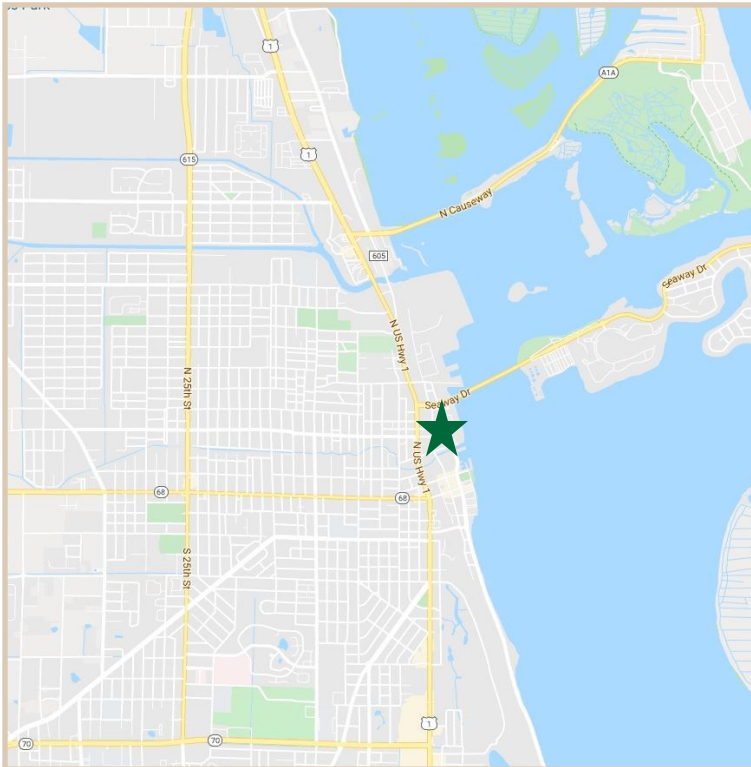
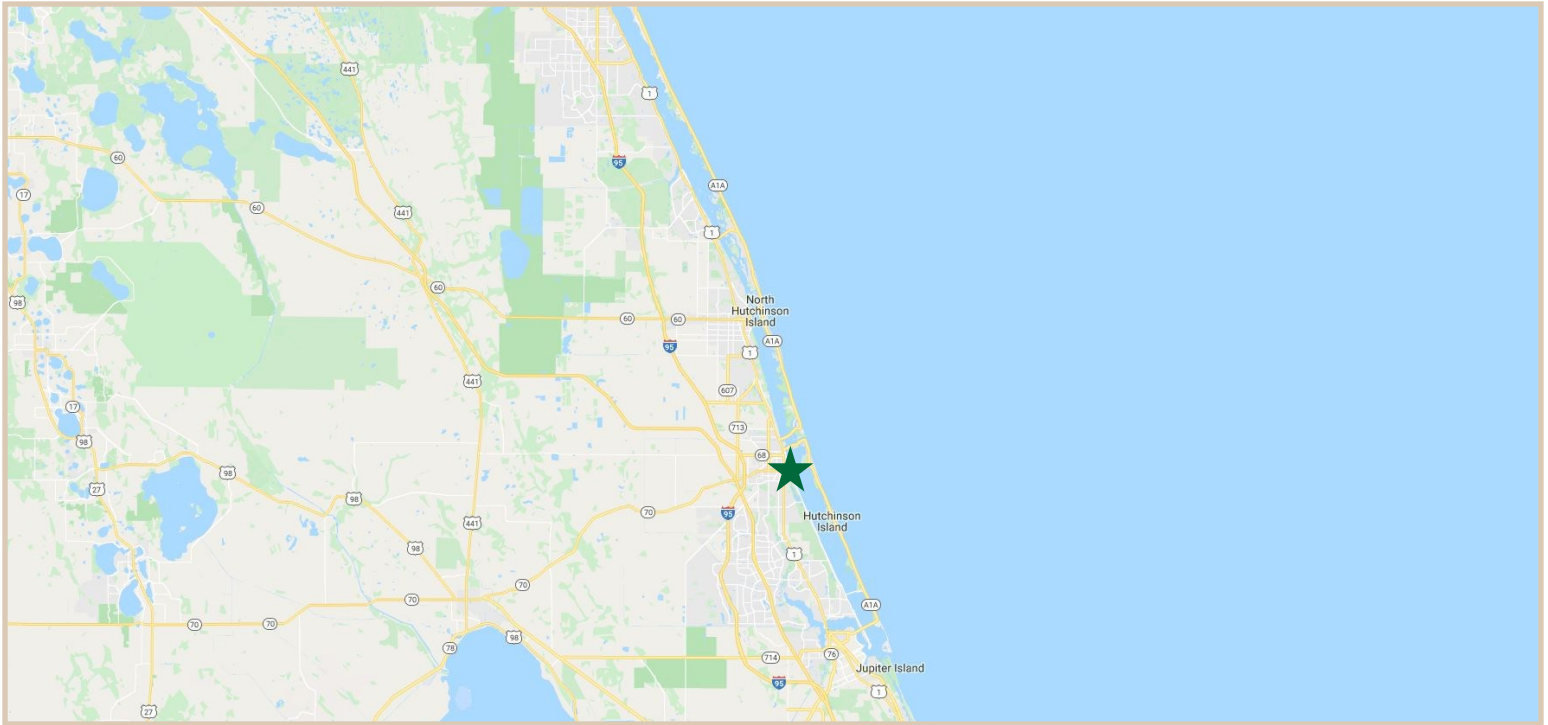
CONTACT INFO:

Brevard County: 321.725.1961
Indian River County: 772.778.4885
Fax: 772.778.4908
Leasing: leasing@vscre.com

LOCATION MAPS

Seaway Plaza

600 North US Highway One, Fort Pierce, FL 34950



CHARLES A. VON STEIN, INC.
*Commercial Property Management,
Sales & Leasing Specialists since 1963*
626 Old Dixie Highway SW
Vero Beach, FL 32962
www.vscrc.com

CONTACT INFO:

Brevard County: 321.725.1961
Indian River County: 772.778.4885
Fax: 772.778.4908
Leasing: leasing@vscrc.com

ADDITIONAL PHOTOS

Seaway Plaza

600 North US Highway One, Fort Pierce, FL 34950



CHARLES A. VON STEIN, INC.
Commercial Property Management,
Sales & Leasing Specialists since 1963
626 Old Dixie Highway SW
Vero Beach, FL 32962
www.vscre.com

CONTACT INFO:

Brevard County: 321.725.1961
Indian River County: 772.778.4885
Fax: 772.778.4908
Leasing: leasing@vscre.com