

# FOR LEASE

**INSITE**  
16,200 SQUARE FEET

## WEST ROAD BUSINESS PARK



### 8790 WEST ROAD • SUITE 100 HOUSTON, TX

- 2,545 SF Office
- 13,655 SF Warehouse
- 3 Dock Doors, 1 Ramped Door
- Rear Load
- 24' Clear Height
- Fully Sprinklered
- 16 Parking Spaces
- Typical Bay (45' x 45')
- NW Houston near Beltway 8 and Highway 290 interchange



## CONTACT INFORMATION

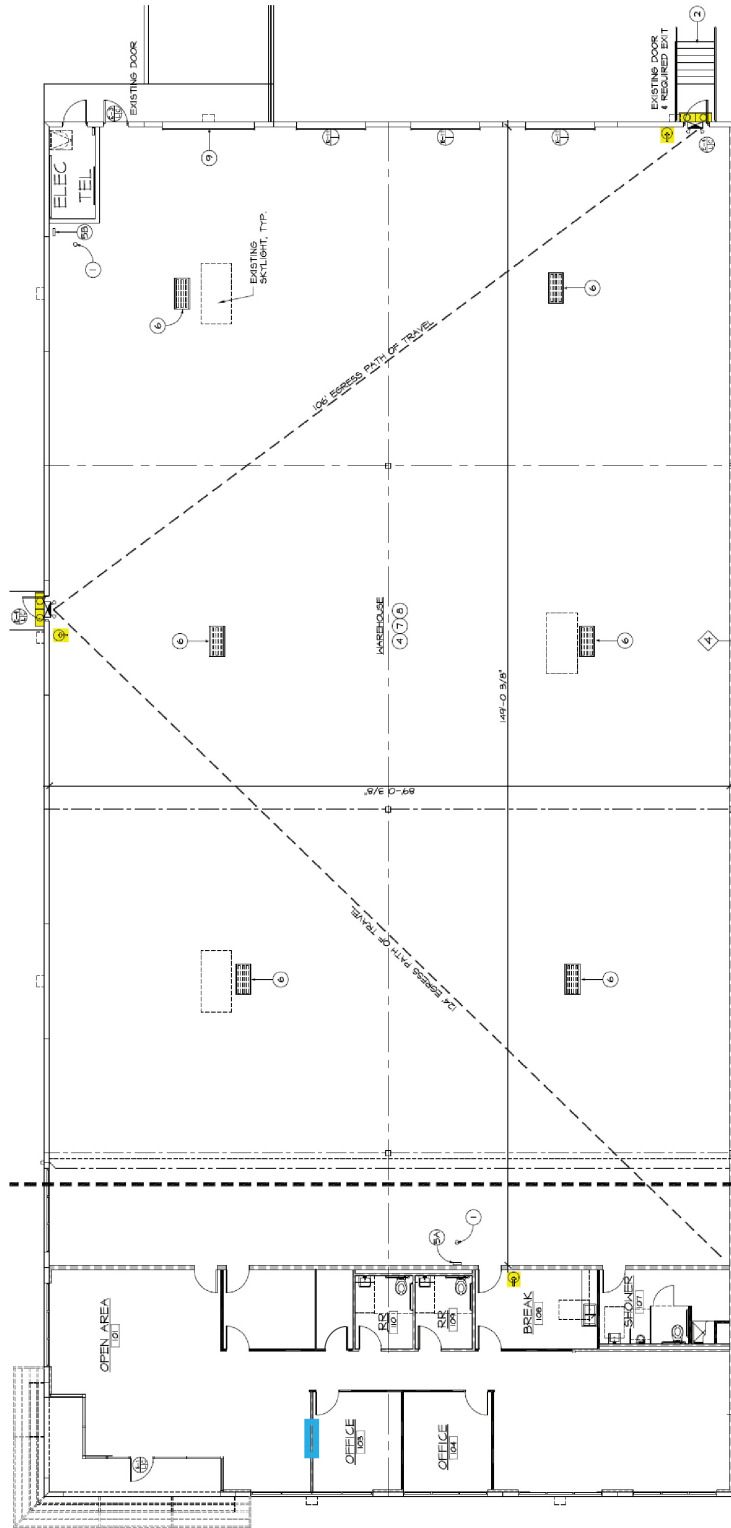
**LOGAN GREER**  
lgreer@insiterealty.com  
713.339.5363

**DAYNE WUNDERLICH**  
dwunderlich@insiterealty.com  
713.339.5329

# FOR LEASE

8790 WEST ROAD • SUITE 100  
HOUSTON, TEXAS

**INSITE**  
16,200 SQUARE FEET



A PROJECT OF  
**EASTGROUP**  
PROPERTIES

## CONTACT INFORMATION

**LOGAN GREER**  
lgreer@insiterealty.com  
713.339.5363

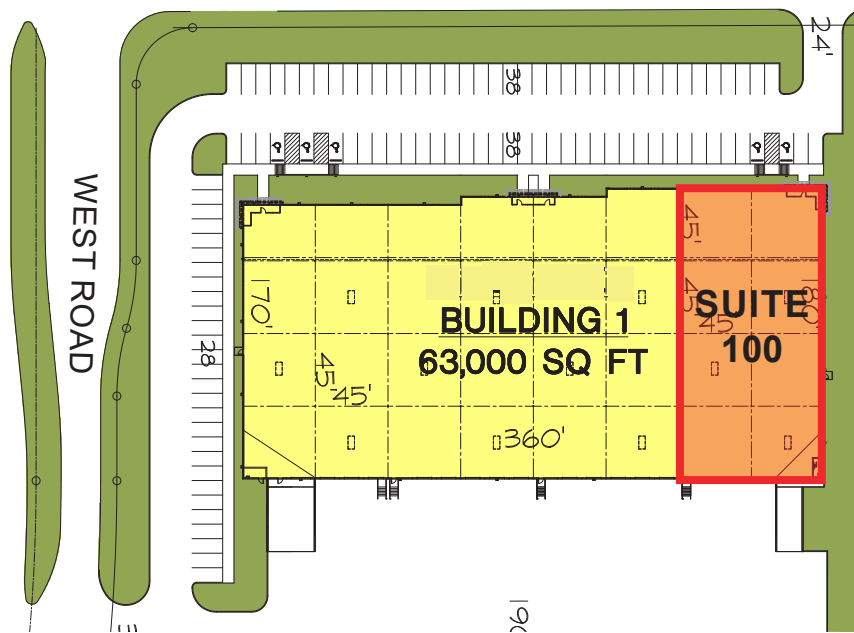
**DAYNE WUNDERLICH**  
dwunderlich@insiterealty.com  
713.339.5329

# FOR LEASE

INSITE

16,200 SQUARE FEET

8790 WEST ROAD • SUITE 100  
HOUSTON, TEXAS



A PROJECT OF  
**EASTGROUP**  
PROPERTIES

## CONTACT INFORMATION

**LOGAN GREER**  
lgreer@insiterealty.com  
713.339.5363

**DAYNE WUNDERLICH**  
dwunderlich@insiterealty.com  
713.339.5329