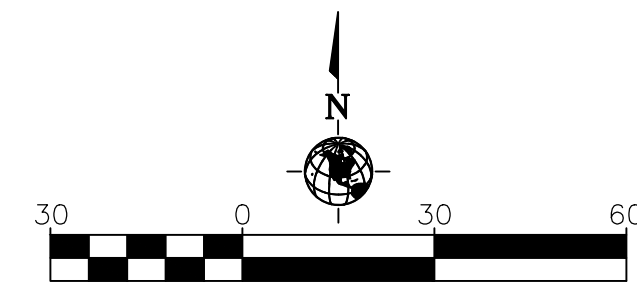




Texas Registration Firm: F-22129
 708 Main St, 10th Floor, Houston TX 77002
 Tel: (713) 458-5599
 www.jdmgroupcompany.com
 Land Development Manager: Jose Diego Monroy, B.S.C.E.
 Email: FMJ@jdmgroupcompany.com

DESIGN-BUILD



SITE LAYOUT NOTES

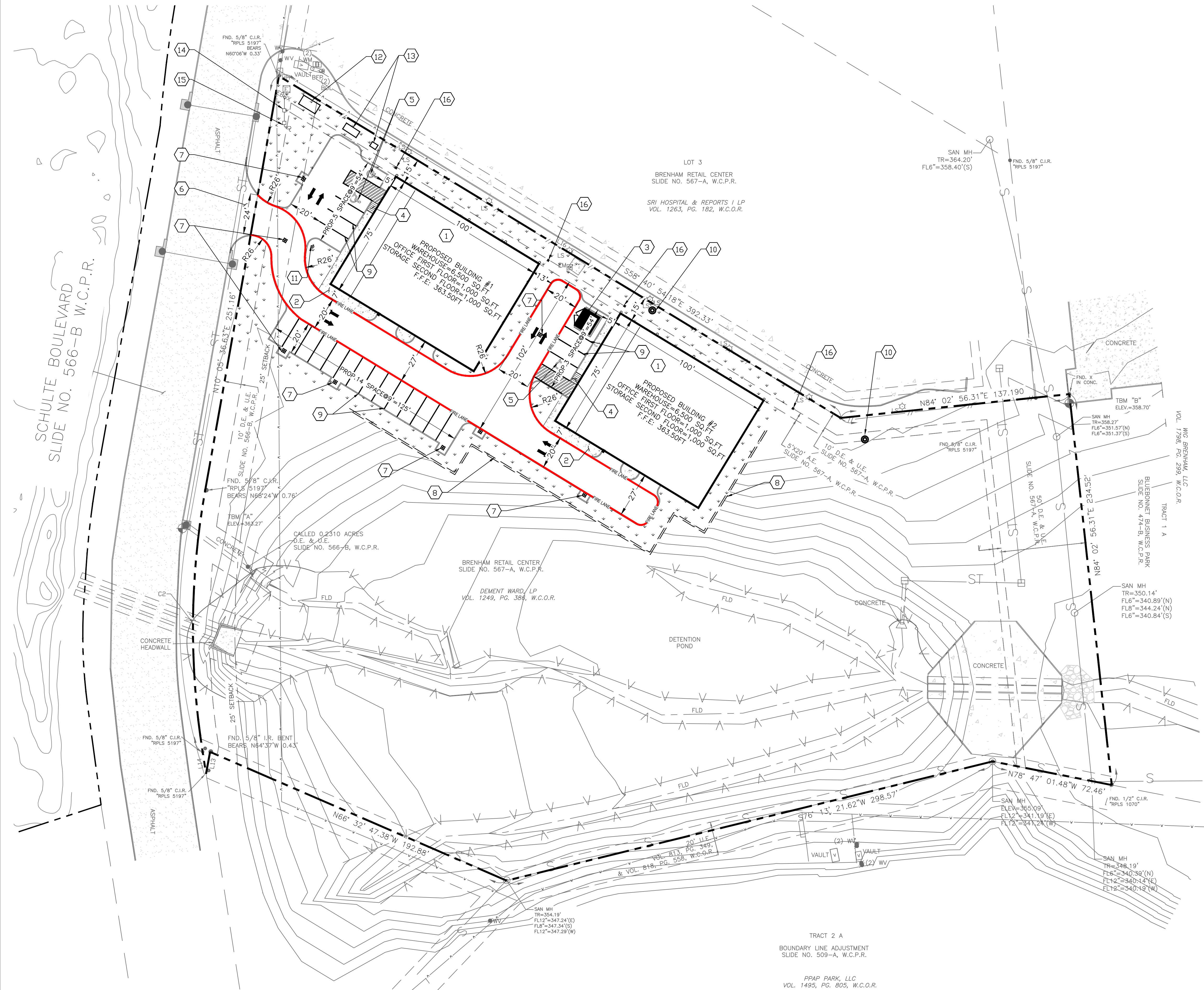
1. THE HORIZONTAL AND VERTICAL LOCATION OF EXISTING SUBSURFACE UTILITIES HAVE BEEN DETERMINED FROM DATA PROVIDED BY OTHERS. IT WILL BE THE RESPONSIBILITY OF THE CONTRACTOR TO PROTECT ALL EXISTING UTILITIES WITHIN THE AREA OF CONSTRUCTION THAT ARE TO REMAIN IN SERVICE. CONTRACTOR SHALL VERIFY SIZE AND LOCATION OF ALL UTILITIES PRIOR TO CONSTRUCTION.
2. ALL DIMENSIONS ARE FROM FACE OF CURB UNLESS OTHERWISE NOTED.
3. ALL DIMENSIONS ARE TO FACE OF BUILDING. REFER TO ARCHITECTURAL PLANS FOR BUILDING DIMENSIONS.
4. REFER TO ARCHITECTURAL PLANS FOR ALL STAIRS, HANDICAPPED RAMP AND RETAINING WALL DETAILS.
5. REFER TO LANDSCAPE ARCHITECT PLANS FOR DETAILS AND DIMENSIONS OF LANDSCAPE AND HARDSCAPE AREAS.

LAYOUT KEY NOTES

- 1 PROPOSED BUILDING. REFER TO STRUCTURAL AND ARCHITECTURAL DRAWINGS FOR CONSTRUCTION.
- 2 PROPOSED 5-IN THICK CONCRETE SIDEWALK, REFER TO PAVEMENT DETAILS FOR CONSTRUCTION.
- 3 PROPOSED DUMPSTER ENCLOSURE, PER STRUCTURAL DRAWINGS.
- 4 PROPOSED ADA RAMP. REFER TO PAVEMENT DETAILS.
- 5 PROPOSED ADA SYMBOL. REFER TO PAVEMENT DETAILS.
- 6 PROPOSED 6-IN. CONCRETE PAVEMENT DRIVEWAY. REFER TO PAVEMENT DETAILS FOR CONSTRUCTION.
- 7 PROPOSED STORM DRAIN INLET TYPE "A". REFER TO STORM DRAIN DETAILS FOR CONSTRUCTION.
- 8 PROPOSED RETAINING WALL. REFER TO STRUCTURAL DETAILS.
- 9 PROPOSED 4-IN. YELLOW STRIPING. REFER TO PAVEMENT DETAILS.
- 10 PROPOSED SANITARY MANHOLE, REFER TO SANITARY SEWER DETAILS.
- 11 PROPOSED 6" FIRE HYDRANT. REFER TO WATER LINE DETAILS.
- 12 PROPOSED WATER METER. REFER TO WATER LINE DETAILS.
- 13 PROPOSED BACKFLOW PREVENTER. REFER TO WATER LINE DETAILS.
- 14 PROPOSED 1/2-IN. IRRIGATION WATER METER. REFER TO WATER LINE DETAILS.
- 15 PROPOSED 1/2-IN. IRRIGATION RPZ BACKFLOW. REFER TO WATER LINE DETAILS.
- 16 PROPOSED STORM DRAIN CATCH BASIN. REFER TO STORM DRAIN DETAILS.

HATCH LEGEND

- PROPERTY LINE
- PROPOSED BUILDING LAYOUT.
- PROPOSED CONCRETE SIDEWALK.
- LANDSCAPING AND/OR GRASS.



BRENHAM INDUSTRIAL WAREHOUSE
2613 SCHULTE BLVD,
BRENHAM, TX 77833.

JDM GROUP COMPANY, LLC
 Project Manager: Jose Diego Monroy, B.S.C.E.
 Assist. Project Manager: Roxana Mendez, B.S.C.E.
 Project Engineer: Larry Deavers, P.E.
 FIRM REGISTRATION No: F-16777
 Email: FMJ@jdmgroupcompany.com
 Cell: (713) 458-5599

ISSUED: 02-17-2026
 ISSUE FOR PERMIT

REVISION:

DESIGNED BY: AJ
 CHECKED BY: RM
 PROJECT NO.: C-25-019-00
 COPYRIGHT: JDM GROUP COMPANY, LLC

SHEET TITLE
LAYOUT PLAN

DRAWING NO.
C-5.0

ONE- CALL NOTIFICATION SYSTM
 CALL BEFORE YOU DIG!!!
 811 (In Houston, Tx)
 (New Statewide Number Outside Houston)
 1-800-344-6377