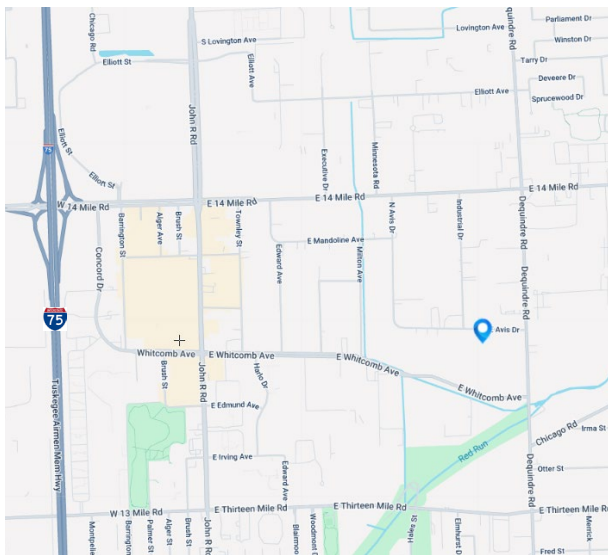




FOR LEASE

1700 E Avis Dr.

Madison Heights, MI 48071



Property Highlights

- 43,200 sf which includes 2,500 sf of office
- Immediate occupancy
- (2) exterior truckwells with levelers
- (1) 12' x 14' grade level door
- Over 100 car/vehicle parking
- Fully sprinklered
- Skylights / exhaust fans / water lines

For information, please contact:

Chris Dowell
 Senior Managing Director
 t 248-447-2717
 chris.dowell@nmrk.com

Teddy O'Keefe
 Associate
 t 248-447-2715
 teddy.okeefe@nmrk.com

39400 Woodward Ave., Suite 100
 Bloomfield Hills, MI 48304



nmrk.com



Licensed in Michigan as Newmark Real Estate
 The information contained herein has been obtained from sources deemed reliable but has not been verified and no guarantee, warranty or representation, either express or implied, is made with respect to such information. Terms of sale or lease and availability are subject to change or withdrawal without notice.

INDUSTRIAL – Lease

1700 E Avis Dr.
Madison Heights, MI 48071



Total Building Size: 43,200
Total Available: 43,200
Age: 1974
Factory: 40,700
Office: 2,500
Minimum Divisible: 43,200
Zoned: M-1

Lease Rate: \$8.25/SF NNN
Monthly Rate: \$29,700
Taxes: \$0.97/SF (2025)

Property Details

Acreage:	3.2	Power:	1000 Amps / 277 & 480 V
Frontage:		Buss:	
Depth:		Lights:	Fluorescent
Parking:	110	Truckwell:	(2) Exterior with levelers
Expandable:		Grade Door:	(1) 12' x 14'
Storage:		Heating:	GFA & Radiant
Clearance:	18'	A/C:	Office
Bay Size:		Sprinklered:	100%
Lavatories:	3	Airlines:	
Crane:		Compressor:	
Underhook:		Floordrains:	

Additional Information:

Immediate occupancy! 2 – exterior truckwells with 1 – 12'x14' grade level door. Over 100 car/vehicle parking. Low NNN costs. Heavy power. Skylights. Exhaust Fans. Fully alarmed.

Contact Information:

Chris Dowell

248-447-2717

chris.dowell@nrmk.com

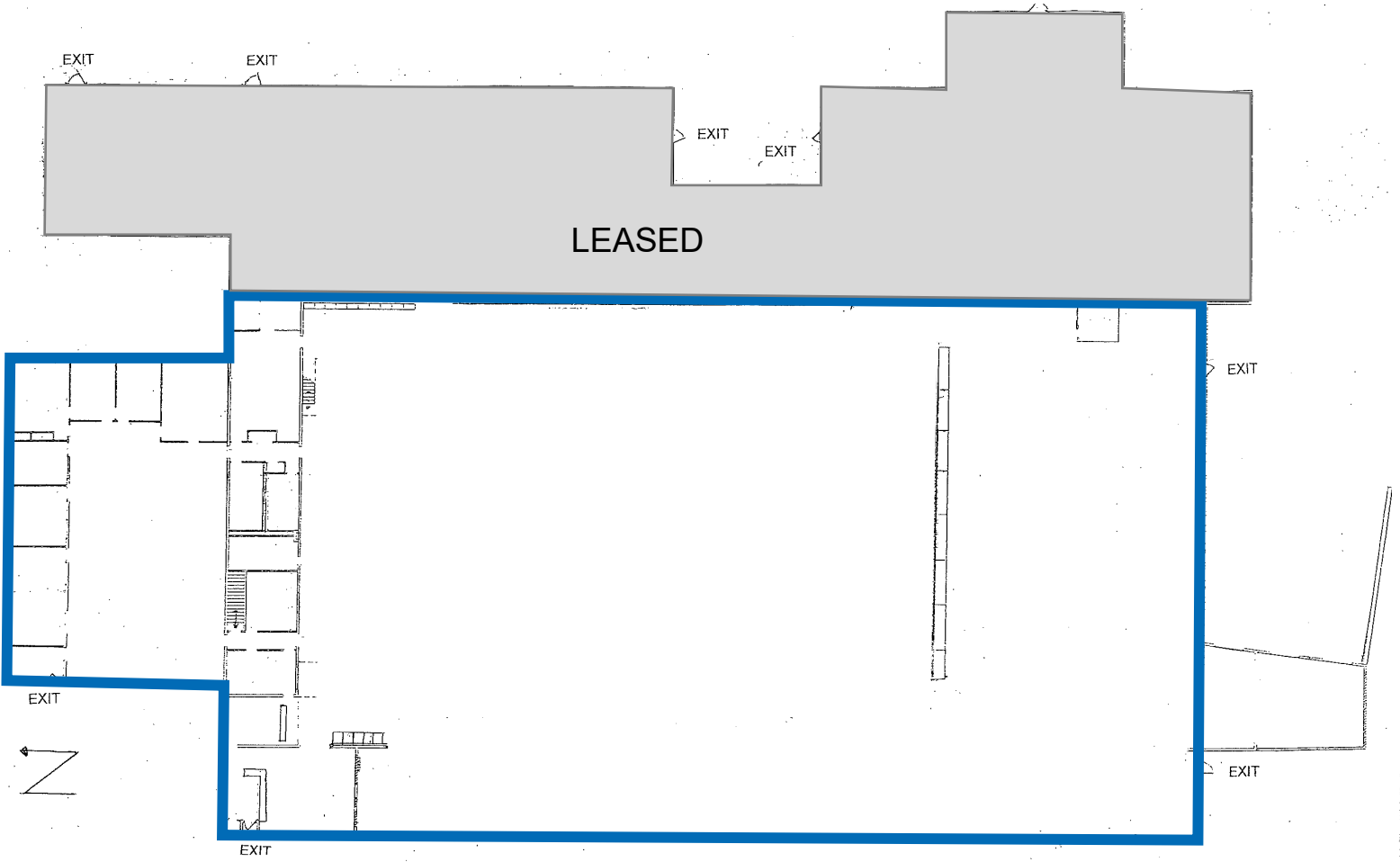
Teddy O'Keefe

248-447-2715

teddy.okeefe@nrmk.com

NEWMARK

1700 E Avis Dr. – Floor Plan



1700 E Avis Dr. – Exterior Photos



NEWMARK