

# SPACE CENTER DISTRIBUTION CENTER

INLAND EMPIRE

11201 Iberia Street  
Jurupa Valley, CA 91752



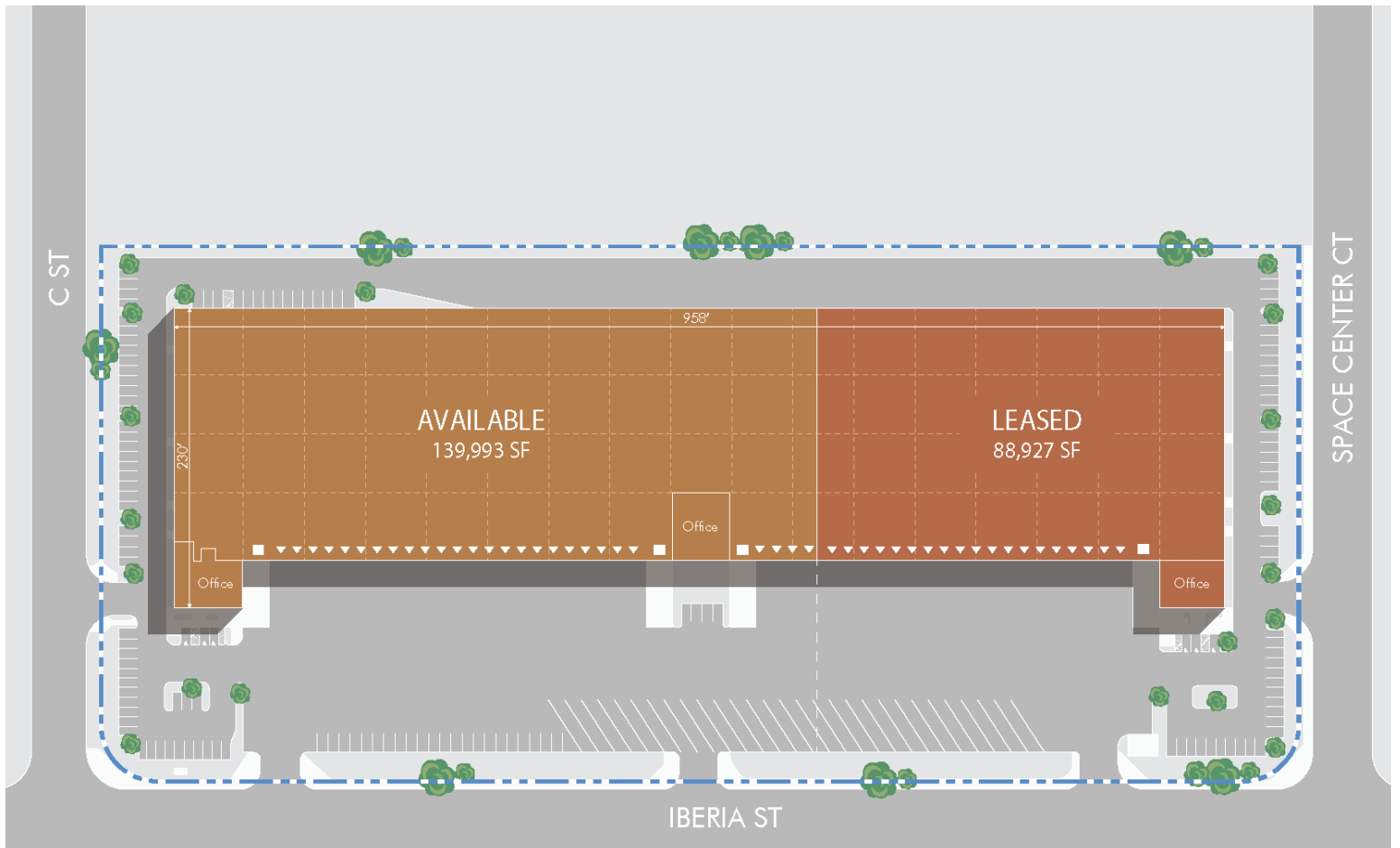
FOR LEASE

±139,933 SF



LEASED BY

**CBRE**



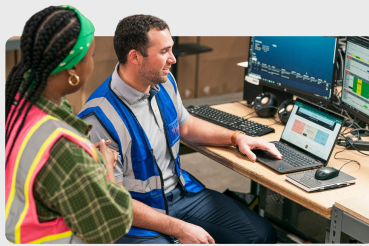
## PROPERTY FEATURES

AVAILABLE SF:	±139,933 SF   POL ±228,860
OFFICE SF:	±6,953 SF   TWO STORY
	<ul style="list-style-type: none"> <li>• SW Ground Floor: ±3,200 SF</li> <li>• SW Mezzanine: ±3,185 SF</li> <li>• Shipping office: ±568 SF</li> </ul>
CLEAR HEIGHT:	30'
SPRINKLERS:	ESFR K-17
DOCK DOORS:	27   12 MECHANICAL LEVELERS
GROUND LEVEL DOORS:	3
POWER:	800 AMPS (PLEASE VERIFY)
WAREHOUSE LIGHTING:	LED
TRUCK COURT:	180'

# Committed to Driving Value for Our Customers

## Properties with a Competitive Edge

Our scale, proprietary data and local relationships allow our 1,200+ skilled team members to help customers stay ahead of market trends.

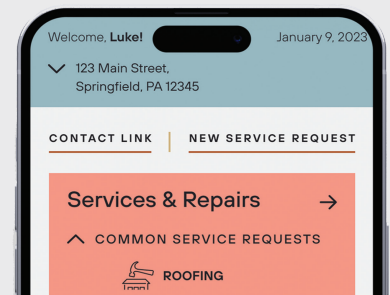


## Best-in-Class Customer Service

Our on-the-ground regional teams provide you with local expertise, leveraging data-driven insights to find the right solutions for your business.

## Link+

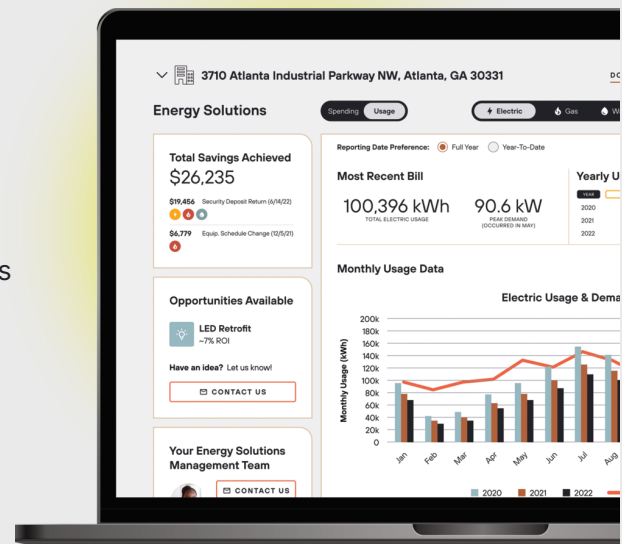
Our digital customer experience platform provides easy access to your property management teams, lease documents, billing and service requests. Sign up today!



500 Million Square Foot Portfolio

## Energy Solutions

Our comprehensive energy and utility management program enables customers to achieve savings and access our in-house sustainability experts. Enroll through Link+.



# CONTACT INFORMATION

11201 Iberia Street  
Jurupa Valley, CA 91752

## **Rigsby Duncan**

Rigsby.Duncan@cbre.com  
(909) 418-2146

CA Lic. 2161469

## **Mike Fuelling**

Mike.Fuelling@cbre.com  
(909) 418-2127

CA Lic. 2107194

## **Dedrik Pharis**

Dedrik.Pharis@cbre.com  
(909) 418-2124

CA Lic. 1936859

## **Jay Dick**

Jay.Dick@cbre.com  
(909) 418-2149

CA Lic. 1014089

This is not an offer or acceptance of an offer to lease space. A lease will only be offered or made in a written agreement signed by landlord. No representation or warranty of any kind is made by landlord unless set forth in a written definitive lease executed by the landlord.



LEASED BY

**CBRE**