

28966 - 29000 WALL STREET
WIXOM, MICHIGAN

INDUSTRIAL FOR LEASE
8,667 – 32,479 Square Feet Available



**SIGNATURE
ASSOCIATES**
KNOW SIGNATURE | KNOW RESULTS



PROPERTY FEATURES

- 32,479 square feet available
 - Suite A: 10,089 sq. ft. with 875 sq. ft. office and (1) grade level door
 - Suite AB: 23,812 sq. ft. with (2) truckwells and (1) grade level door
 - Suite BC: 22,390 sq. ft. with (3) truckwells and (1) grade level door
 - Suite C: 8,667 sq. ft. with (1) truckwell and (1) grade level door
- Convenient location with access to I-96 via Beck Road or Wixom Road interchange
- Warehouse –distribution or light industrial with 17' - 22' Clear height, (3) truckwells, 48 parking spaces, and power
- Contact broker for leasing information



For more information, please contact:

JEFF LEMANSKI
(248) 359 0641
jlemanski@signatureassociates.com

CHRIS D'ANGELO
(248) 948 0109
cdangelo@signatureassociates.com

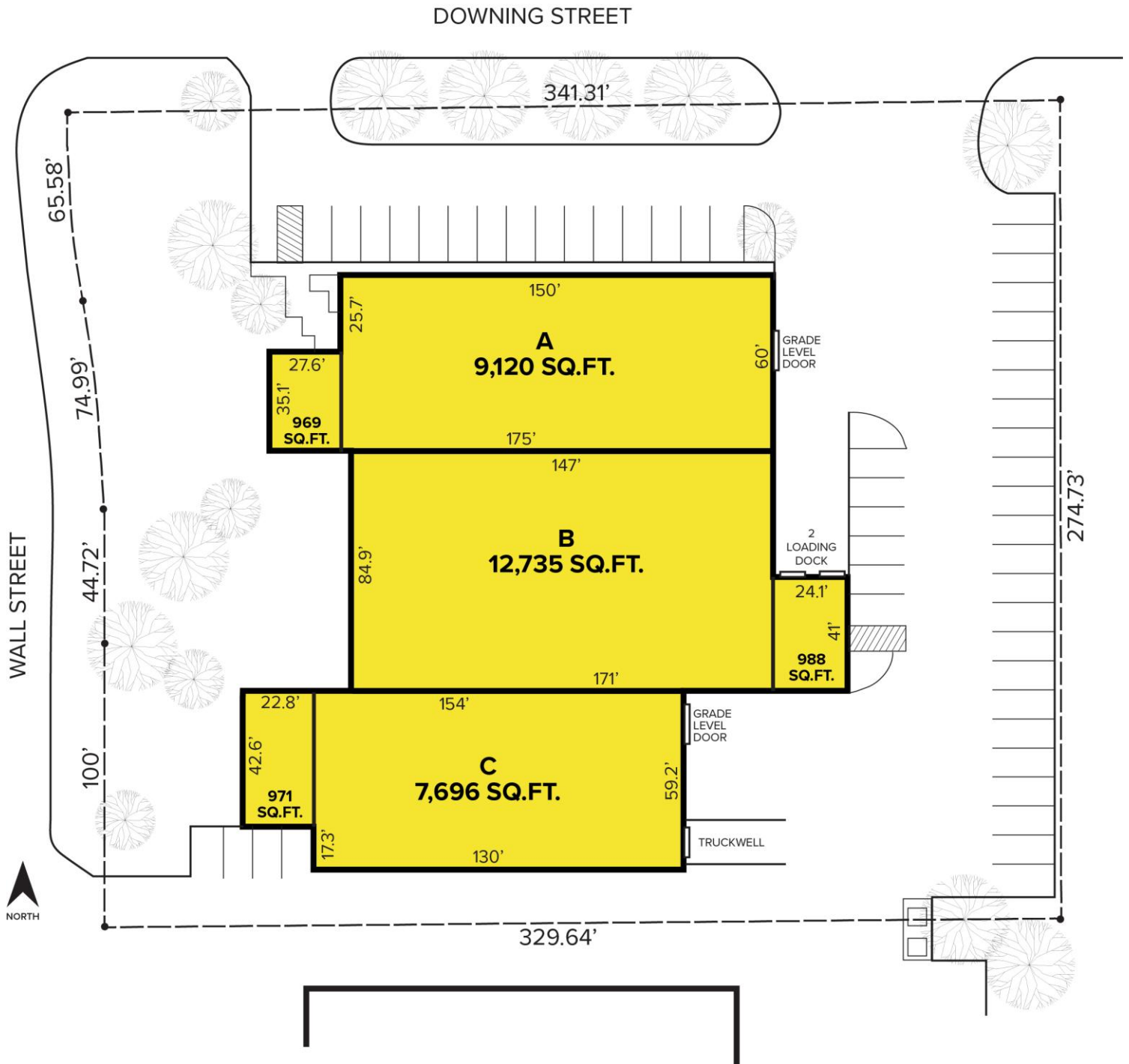
SIGNATURE ASSOCIATES
One Towne Square, Suite 1200
Southfield, MI 48076
www.signatureassociates.com

28966 - 29000 Wall Street - Wixom, Michigan

Industrial For Lease

8,667 – 32,479
Square Feet
AVAILABLE

Site Plan



For more information, please contact:

JEFF LEMANSKI

(248) 359 0641

jlemanski@signatureassociates.com

CHRIS D'ANGELO

(248) 948 0109

cdangelo@signatureassociates.com

SIGNATURE ASSOCIATES

One Towne Square, Suite 1200

Southfield, MI 48076

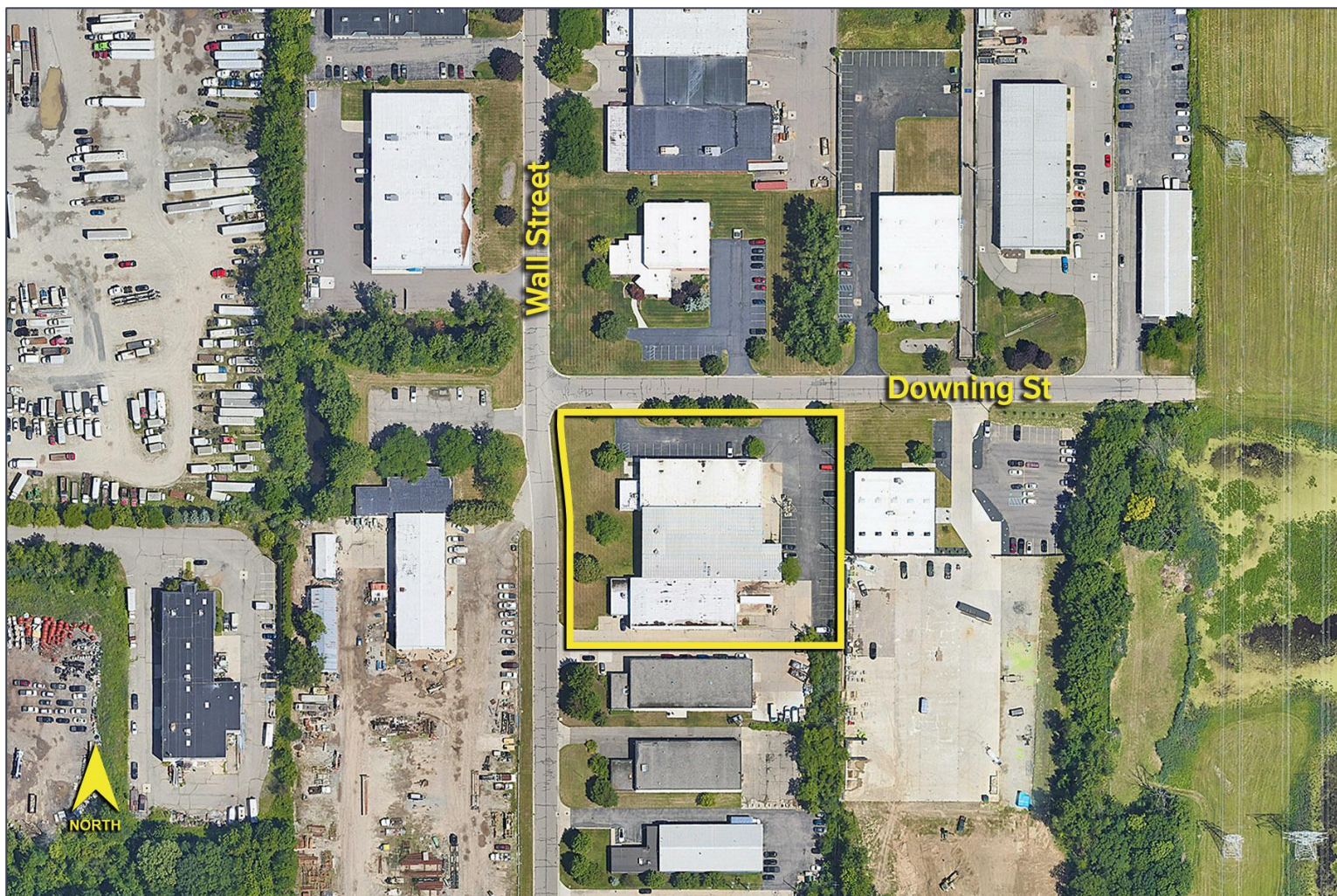
www.signatureassociates.com

28966 - 29000 Wall Street - Wixom, Michigan

Industrial For Lease

8,667 – 32,479
Square Feet
AVAILABLE

Aerial



For more information, please contact:

JEFF LEMANSKI
(248) 359 0641
jlemanski@signatureassociates.com

CHRIS D'ANGELO
(248) 948 0109
cdangelo@signatureassociates.com

SIGNATURE ASSOCIATES
One Towne Square, Suite 1200
Southfield, MI 48076
www.signatureassociates.com