

Carolina Medical Plaza

3010 Farrow Road, Columbia, SC 29204



Medical Offices Available

SIZE
40,466 RSF

PARKING RATIO
4.0 per 1,000 RSF

- COMING SOON! SPEC SUITE 230
1,789 RSF
- Anchored by Prisma Health-
Midlands Senior Care, PT/OT and
more provide an opportunity for
referral partners
- Highly visible from Farrow Rd. and
Colonial Dr.
- Generous Tenant Improvement
Allowance package and flexible
lease terms
- On-Site Security at Building
Entrance
- Well maintained landscaping
- Proximity to a variety of
restaurants in both Bull Street
and NOMA districts.
- 1,554-3,343 available square
feet

Three-story medical office building adjacent to Prisma Health Richland Hospital Campus.

POPULATION (5-MILE RADIUS)

170,033

AVERAGE HOUSEHOLD INCOME (5-MILE RADIUS)

\$81,435

PERCENT OF POPULATION INSURED (5-MILE RADIUS)

72.8%



NEARBY HOSPITALS	DISTANCE	DRIVE TIME
1. Prisma Health Richland Hospital	0.7 mi	3 min
2. MUSC Health Columbia Medical Center Downtown	1.8 mi	6 min

SURROUNDING POINTS OF INTEREST

- CVS Pharmacy
- Bull Street Development
- NOMA Development
- Tropical Smoothie Cafe
- Subway
- The Warmouth
- Publico at Bull Street
- Hotel Trundle
- Chick-Fil-A
- Indah Coffee

JEFF HEIN, SIOR | SHAREHOLDER & BROKER
 803 744 9825
jhein@naicolumbia.com

WILL DUPREE | BROKERAGE ASSOCIATE
 803 744 9822
wdupree@naicolumbia.com

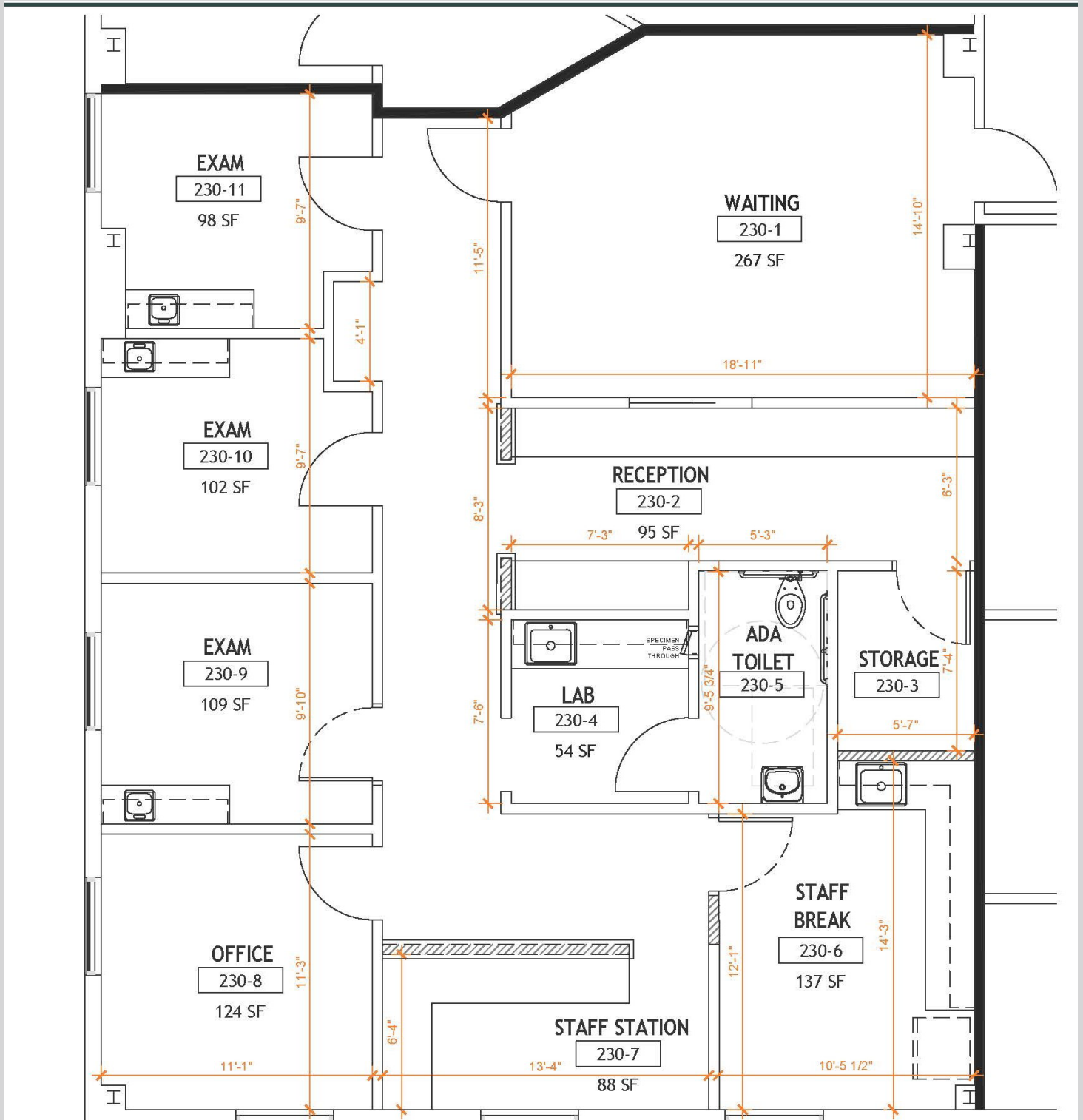
HOPE ANDREWS | BROKERAGE ASSOCIATE
 803 744 9869
handrews@naicolumbia.com

CALL BROKERS FOR PRICING

COMING SOON! Spec Suite 230

1,789 RSF

Reception Area, Waiting Room, 3 Exam Rooms, Office, Break Room, Staff Station, Storage, and ADA Bathroom



Suite 240

1,554 RSF - can be combined with Suite 230 (3,343 RSF)

