

For Lease

# Class-A Office Building on Kietzke Ln.



[Click for a Virtual Tour](#) 

5441 Kietzke Ln.  
Reno, NV 89511

**Michael Keating, SIOR**  
Partner  
775.386.9727  
mkeating@logicCRE.com  
S.0174942

**Michael Dorn**  
Vice President  
775.453.4436  
mdorn@logicCRE.com  
S.0189635

## Listing Snapshot



**Contact Broker**  
Lease Rate



**± 11,516 - 44,106 SF**  
Available Square Footage



**\$0.56 PSF**  
Estimated NNN Cost

## Property Highlights

- Class-A office building
- Anticipated \$1MM exterior and interior renovations to be completed in 2026
- Close proximity to amenities including The Village at Rancharrah
- Turn-key buildouts or TIA available for qualifying tenants
- Various suite sizes and configurations available
- Easy access from S. Virginia St. & Interstate 580
- Covered parking available
- Building signage available
- Adjacent to Anderson park and walking trails

## Demographics

	1-mile	3-mile	5-mile
2025 Population	4,730	68,672	162,021
2025 Average Household Income	\$115,271	\$109,067	\$129,325
2025 Total Households	2,197	29,964	71,800





Downtown Reno



# Floor Plan | First Floor | Suite 150 | ± 11,516 SF

 Available

- Nineteen (19) private offices
- Multiple bullpen areas
- Reception
- Three (3) conference rooms
- Patio

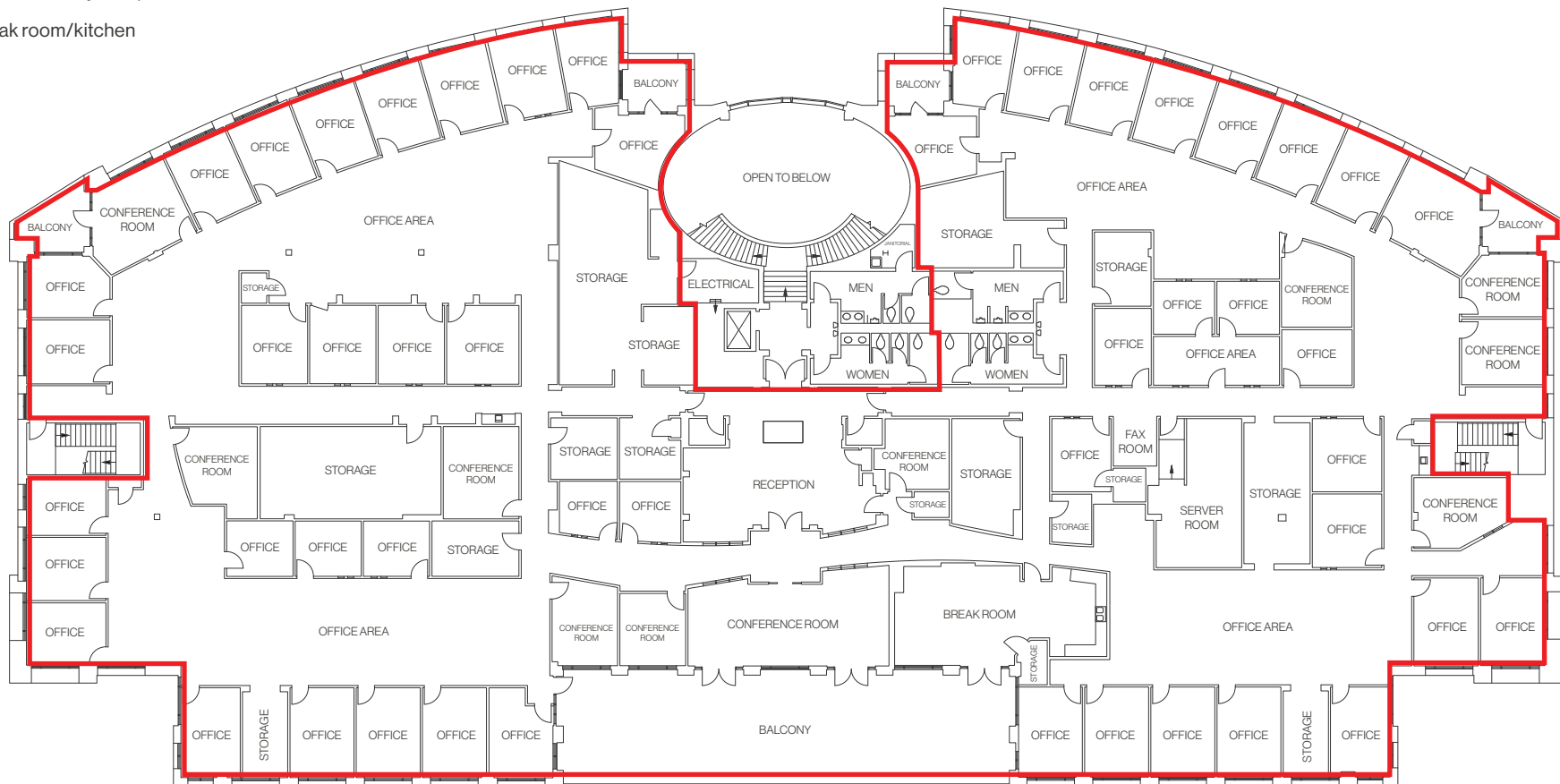


# Floor Plan | Second Floor | Suite 200 | ± 32,590 SF

Available

- Forty-nine (49) private offices
- Ten (10) conference rooms
- Two (2) restrooms
- Reception & waiting area
- Multiple large storage spaces
- Private balcony with park and mountain views
- Break room/kitchen

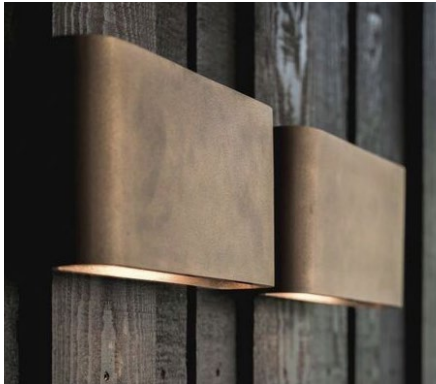
*\*Demising options available - contact broker for details*



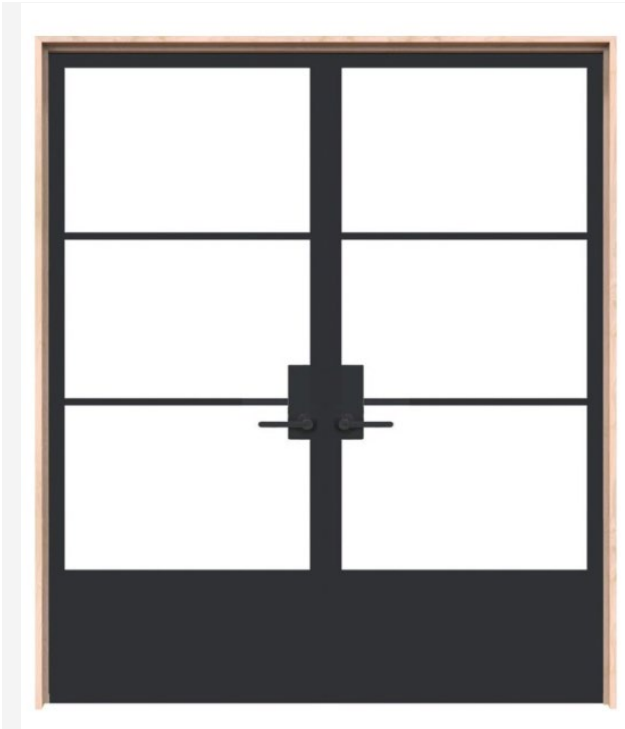
Interior Concepts



Interior Concepts



Interior Concepts



Property Photos | Interior



# LOGIC Commercial Real Estate

## Specializing in Brokerage and Receivership Services



Join our email list and  
connect with us on LinkedIn

The information herein was obtained from sources deemed reliable; however LOGIC Commercial Real Estate makes no guarantees, warranties or representation as to the completeness or accuracy thereof.

For inquiries please reach out to our team.

**Michael Keating, SIOR**  
Partner  
775.386.9727  
mkeating@logicCRE.com  
S.0174942

**Michael Dorn**  
Vice President  
775.453.4436  
mdorn@logicCRE.com  
S.0189635