



447 Falcon Drive

Palmyra, NE 68418

For more information, contact:

Andy Widman

402 441 5814 • awidman@naifma.com

NAIFMA Realty

Union Bank Place | 1248 'O' St, Ste. 550, Lincoln, NE 68508 | (402) 441-5800 | naifmarealty.com

Property Information

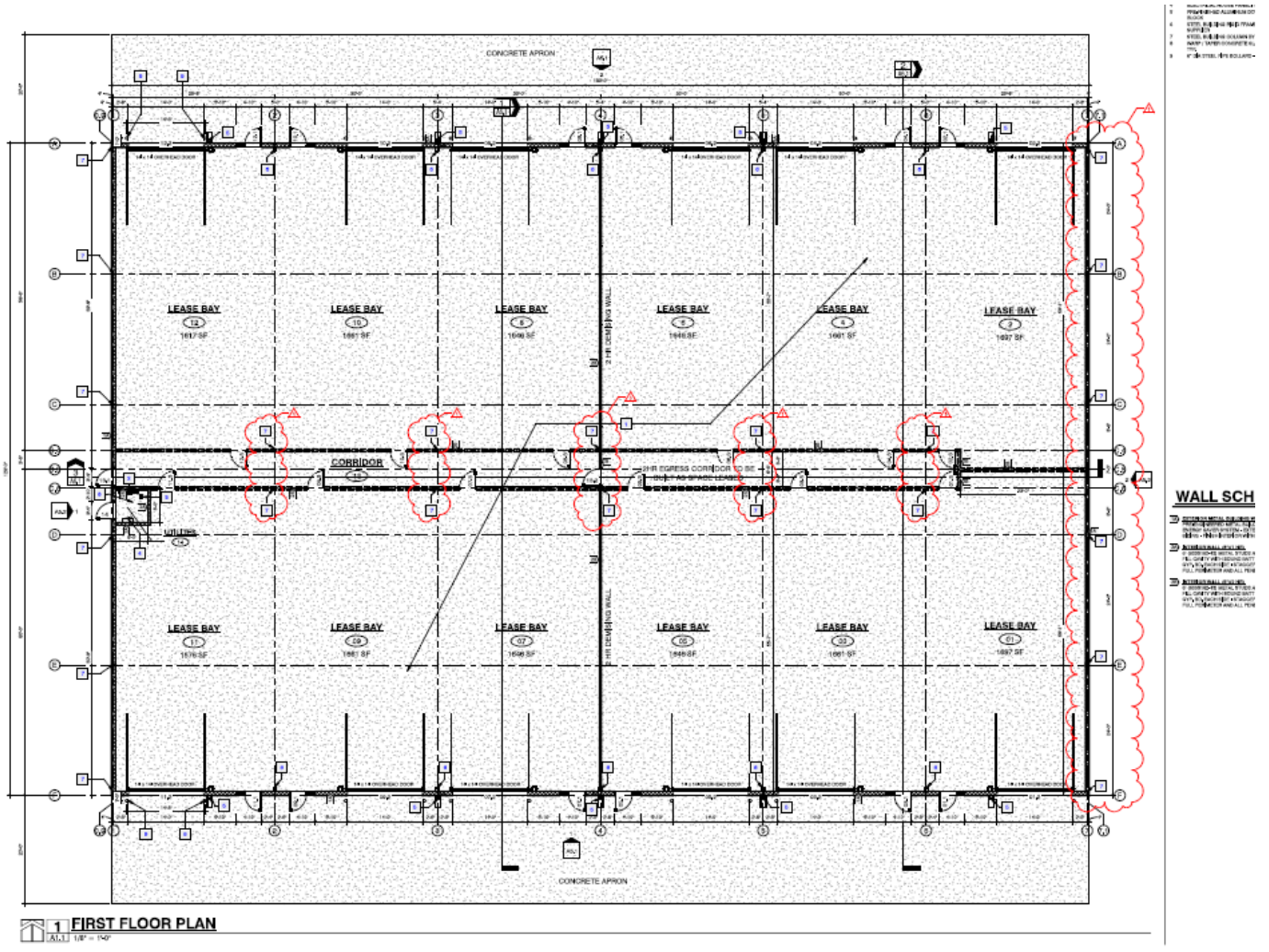


- 1,600-9,600 SF Bays Available
- \$128.00/SF
- 14' Overhead Doors
- 18' Eave Height
- Optional Office Build-Out
- 3.37 Acres
- Located 10 Minutes from Lincoln on Highway 2
- Estimated Completion is Fall 2026

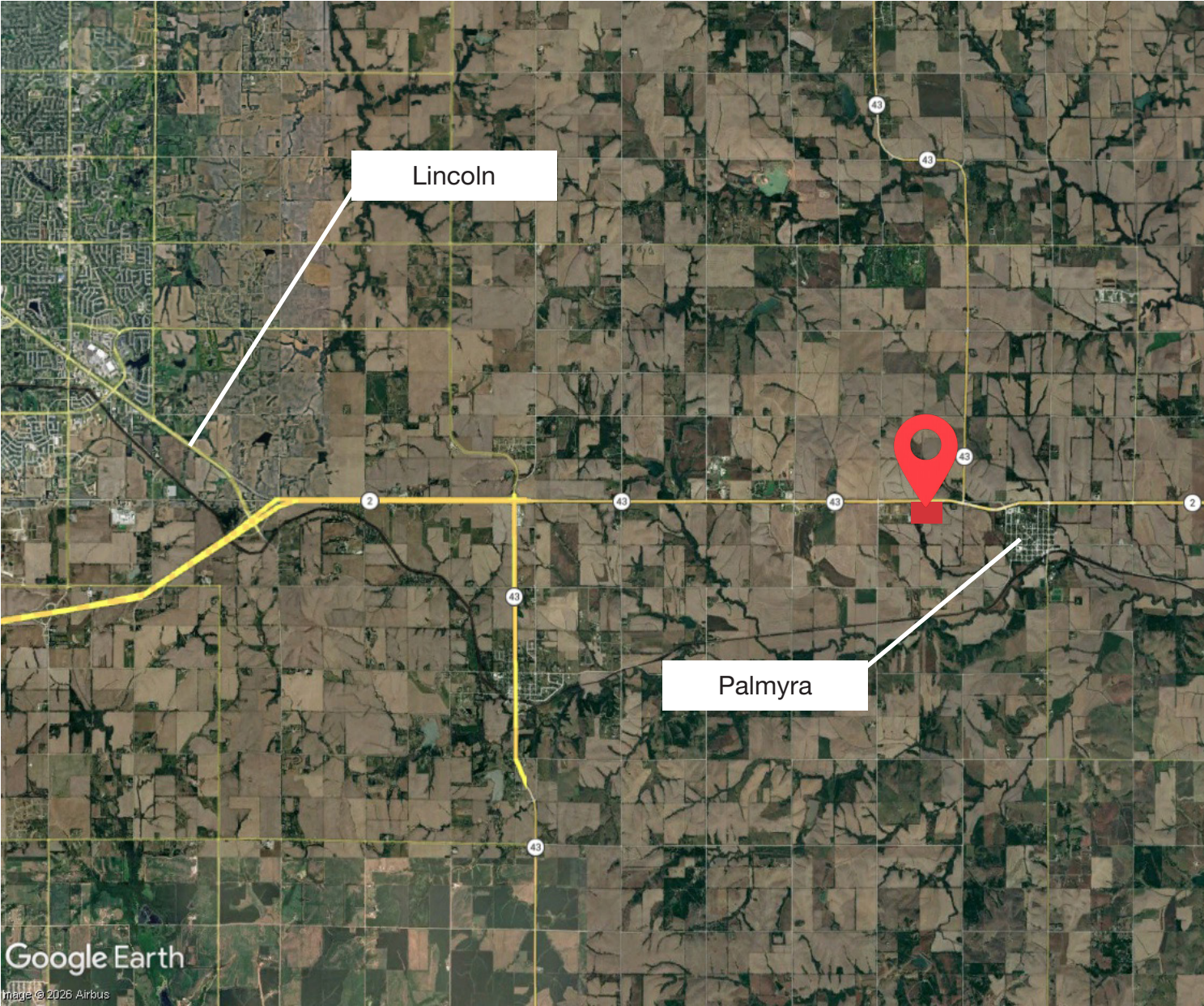


Union Bank Place | 1248 'O' St, Ste. 550, Lincoln, NE 68508 | (402) 441-5800 | naifmarealty.com

Site Plan



Location Information



Union Bank Place | 1248 'O' St, Ste. 550, Lincoln, NE 68508 | (402) 441-5800 | naifmarealty.com