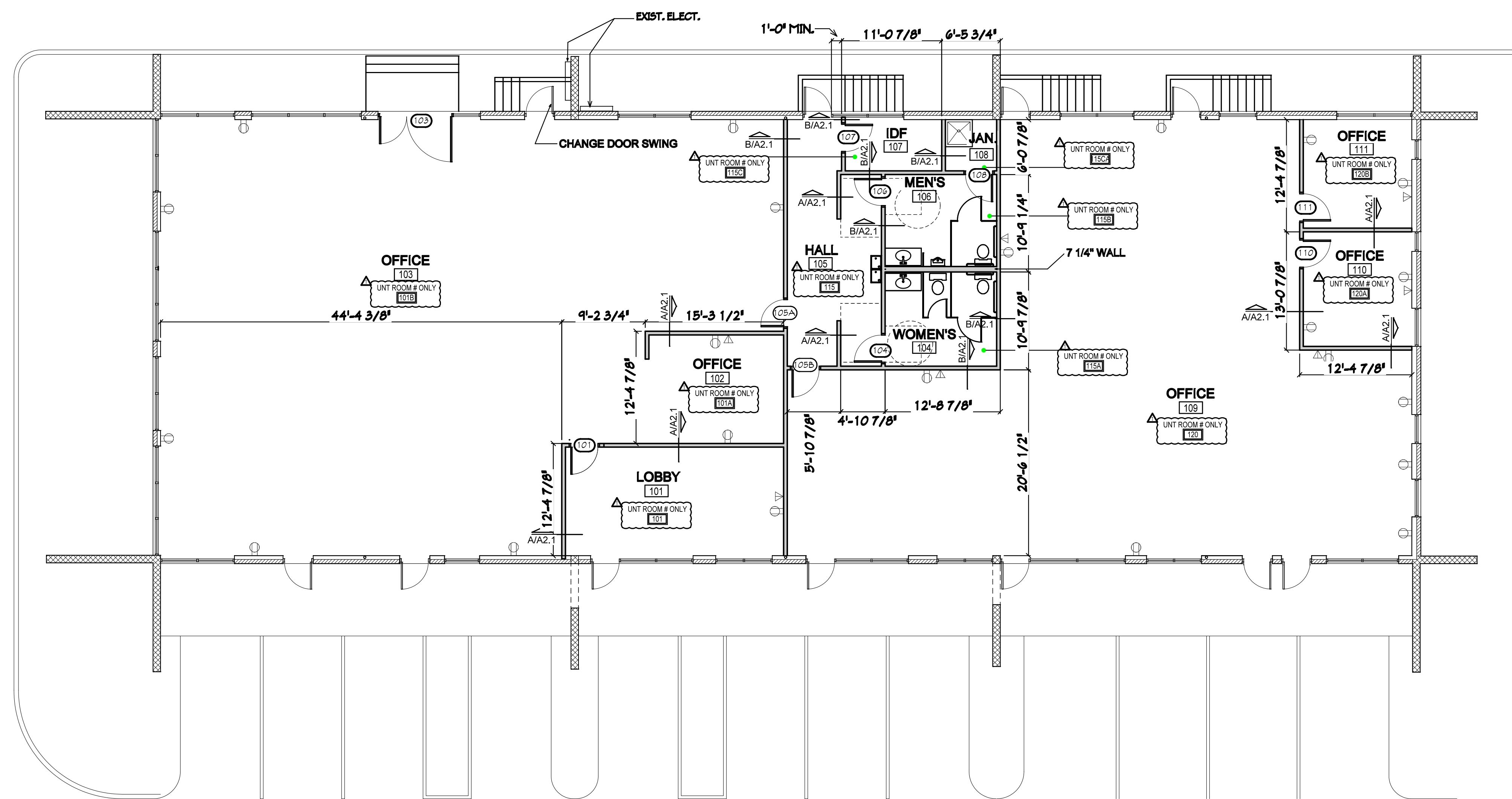


**A INTERIOR WALL SECTION**  
SCALE: 3/4" = 1'-0"

**B INTERIOR WALL SECTION**  
SCALE: 3/4" = 1'-0"

**C INTERIOR WALL SECTION**  
SCALE: 3/4" = 1'-0"

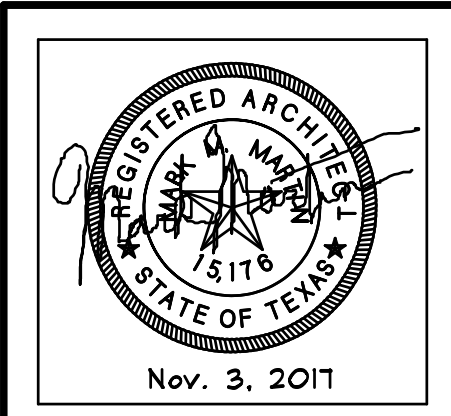


**FLOOR PLAN**  
SCALE: 1/8" = 1'-0"

1 UNT ROOM NUMBERS ADDED

**Michael A. Bates**  
Architect  
**Mark M. Martin**  
Architect  
**BATES ARCHITECTS MARTIN**  
521 S Loop 286 Suite 165 Denton, TX 76205  
940.387.4881  
© Bates & Martin Architects, LLC. All rights reserved.

REMODEL OF AN EXISTING BUILDING  
**Tenant Finish Out**  
1716 Scripture Denton, Texas



BMA PROJECT NO: 17-157  
DATE: 11-16-17  
REV Δ  
REV

**FLOOR PLAN**  
**A2.1**