

DRAGAS OFFICE PARK

AVAILABLE SUITE (1):

4534 BONNEY RD, STE B (1,728 SF):

- Single-story building with direct suite access
- End cap suite with two entrances
- Abundant natural light
- On-site property management. Maintenance techs within a 3-minute drive
- Available 12/1/26

PARK OVERVIEW:

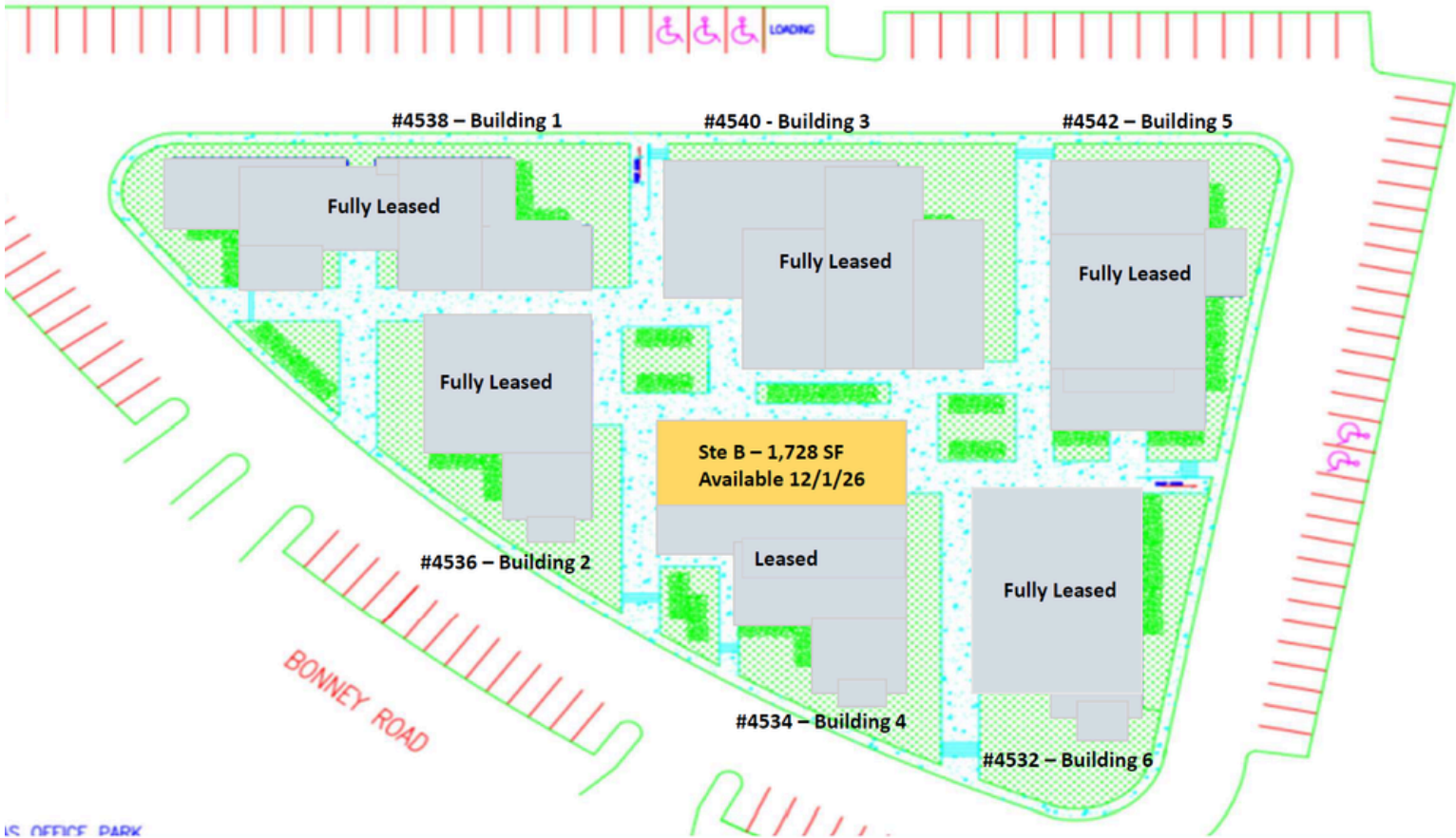
- Prominent monument, post, and building suite signage available
- Ample free surface parking. Enjoy Town Center without the hassle of garage parking
- Convenient Interstate access allows easy daytime entry to Town Center while avoiding the rush hour traffic and multiple stoplights.
- High ceilings and abundant natural light
- Meticulously maintained landscaping

MAC WEAVER, Vice President of Dragas Companies Realty
O: 757-4705-9133 | E: mweaver@dragas.com

DRAGAS OFFICE PARK

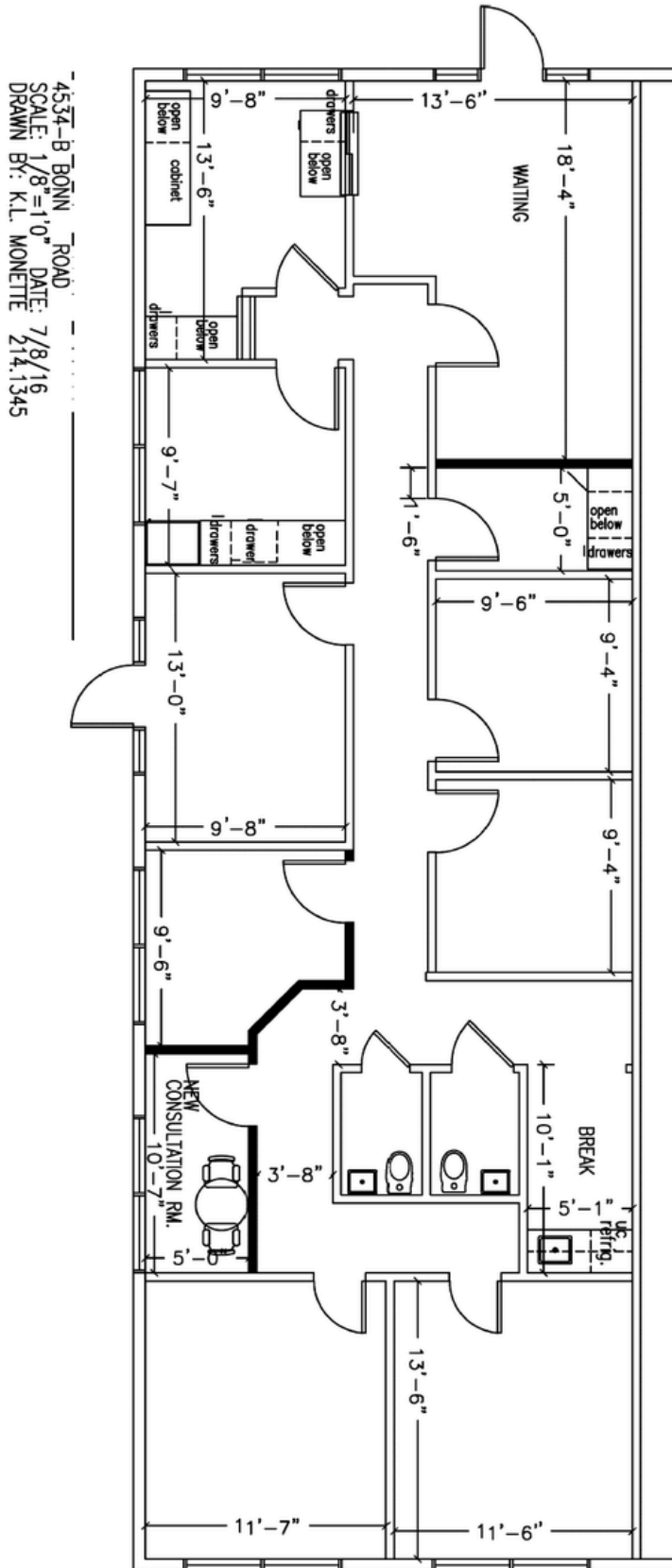
Available Suite:

4534 Bonney Road, Ste B: 1,728 SF



4534 Bonney Road, Ste B

Floorplan:





DRAGAS OFFICE PARK

LOCATION FEATURES

- Convenient Interstate access to both 264 EB & 264 WB
- Easy S. Independence Blvd. & Virginia Beach Blvd. access
- Extremely close proximity to Town Center - restaurants, coffee, shopping, entertainment, etc.
- Short drive to Mt. Trashmore recreational park with 165 acres of walking paths, benches and picnic tables, large lake, & exercise trails with equipment.

DRAGAS

COMPANIES

MAC WEAVER

Vice President Dragas Companies Realty
O: 757-705-9133 | E: mweaver@dragas.com