

**3029 S. Sherwood Forest Blvd.  
Baton Rouge, LA 70809**

**The C.J Brown Building  
Office Space For Lease**

**Property Features**

- Flexible Floor Plans
- Ample Parking
- \$13 PSF Full Service



**NAI**Latter & Blum

**Jonann Stutzman Ty Gose, CCIM**

225.445.0473

225.295.0800

jonann@latterblum.com

ty@latterblum.com

LICENSED IN LOUISIANA. NO WARRANTY OR REPRESENTATION, EXPRESS OR IMPLIED, IS MADE AS TO THE ACCURACY OF THE INFORMATION CONTAINED HEREIN, AND THE SAME IS SUBMITTED SUBJECT TO ERRORS, OMISSIONS, CHANGE OF PRICE, RENTAL OR OTHER CONDITIONS, PRIOR SALE, LEASE OR FINANCING, OR WITHDRAWAL WITHOUT NOTICE, AND OF ANY SPECIAL LISTING CONDITIONS IMPOSED BY OUR PRINCIPALS NO WARRANTIES OR REPRESENTATIONS ARE MADE AS TO THE CONDITION OF THE PROPERTY OR ANY HAZARDS CONTAINED THEREIN ARE ANY TO BE IMPLIED.

1700 City Farm  
Baton Rouge, LA 70806 USA

225.295.0800

[www.latterblum.com](http://www.latterblum.com)

**3029 S. Sherwood Forest Blvd.  
Baton Rouge, LA 70809**

**The C.J Brown Building  
Office Space For Lease**



**NAI** **Latter & Blum**

**Jonann Stutzman**   **Ty Gose, CCIM**  
225.445.0473                      225.295.0800  
jonann@latterblum.com                      ty@latterblum.com

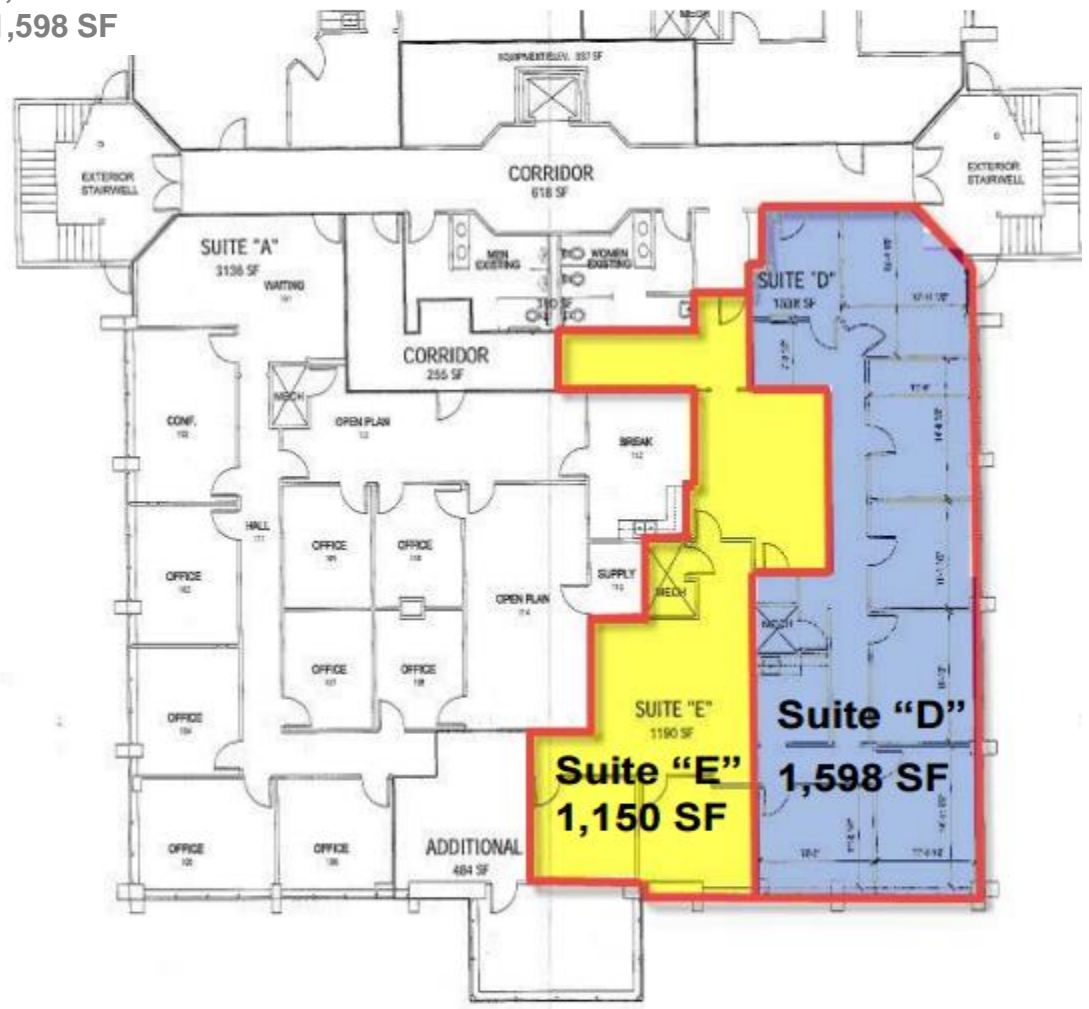
LICENSED IN LOUISIANA. NO WARRANTY OR REPRESENTATION, EXPRESS OR IMPLIED, IS MADE AS TO THE ACCURACY OF THE INFORMATION CONTAINED HEREIN, AND THE SAME IS SUBMITTED SUBJECT TO ERRORS, OMISSIONS, CHANGE OF PRICE, RENTAL OR OTHER CONDITIONS, PRIOR SALE, LEASE OR FINANCING, OR WITHDRAWAL WITHOUT NOTICE, AND OF ANY SPECIAL LISTING CONDITIONS IMPOSED BY OUR PRINCIPALS NO WARRANTIES OR REPRESENTATIONS ARE MADE AS TO THE CONDITION OF THE PROPERTY OR ANY HAZARDS CONTAINED THEREIN ARE ANY TO BE IMPLIED.

1700 City Farm  
Baton Rouge, LA 70806 USA  
225.295.0800  
[www.latterblum.com](http://www.latterblum.com)

# 3029 S. Sherwood Forest Blvd. Baton Rouge, LA 70809

The C.J Brown Building  
Office Space For Lease

1<sup>st</sup> Floor -  
Suite E - 1,150 SF  
Suite D - 1,598 SF



## **NA**Latter & Blum

**Jonann Stutzman** 225.445.0473  
jonann@latterblum.com

**Ty Gose, CCIM** 225.295.0800  
ty@latterblum.com

LICENSED IN LOUISIANA. NO WARRANTY OR REPRESENTATION, EXPRESS OR IMPLIED, IS MADE AS TO THE ACCURACY OF THE INFORMATION CONTAINED HEREIN, AND THE SAME IS SUBMITTED SUBJECT TO ERRORS, OMISSIONS, CHANGE OF PRICE, RENTAL OR OTHER CONDITIONS, PRIOR SALE, LEASE OR FINANCING, OR WITHDRAWAL WITHOUT NOTICE, AND OF ANY SPECIAL LISTING CONDITIONS IMPOSED BY OUR PRINCIPALS NO WARRANTIES OR REPRESENTATIONS ARE MADE AS TO THE CONDITION OF THE PROPERTY OR ANY HAZARDS CONTAINED THEREIN ARE ANY TO BE IMPLIED.

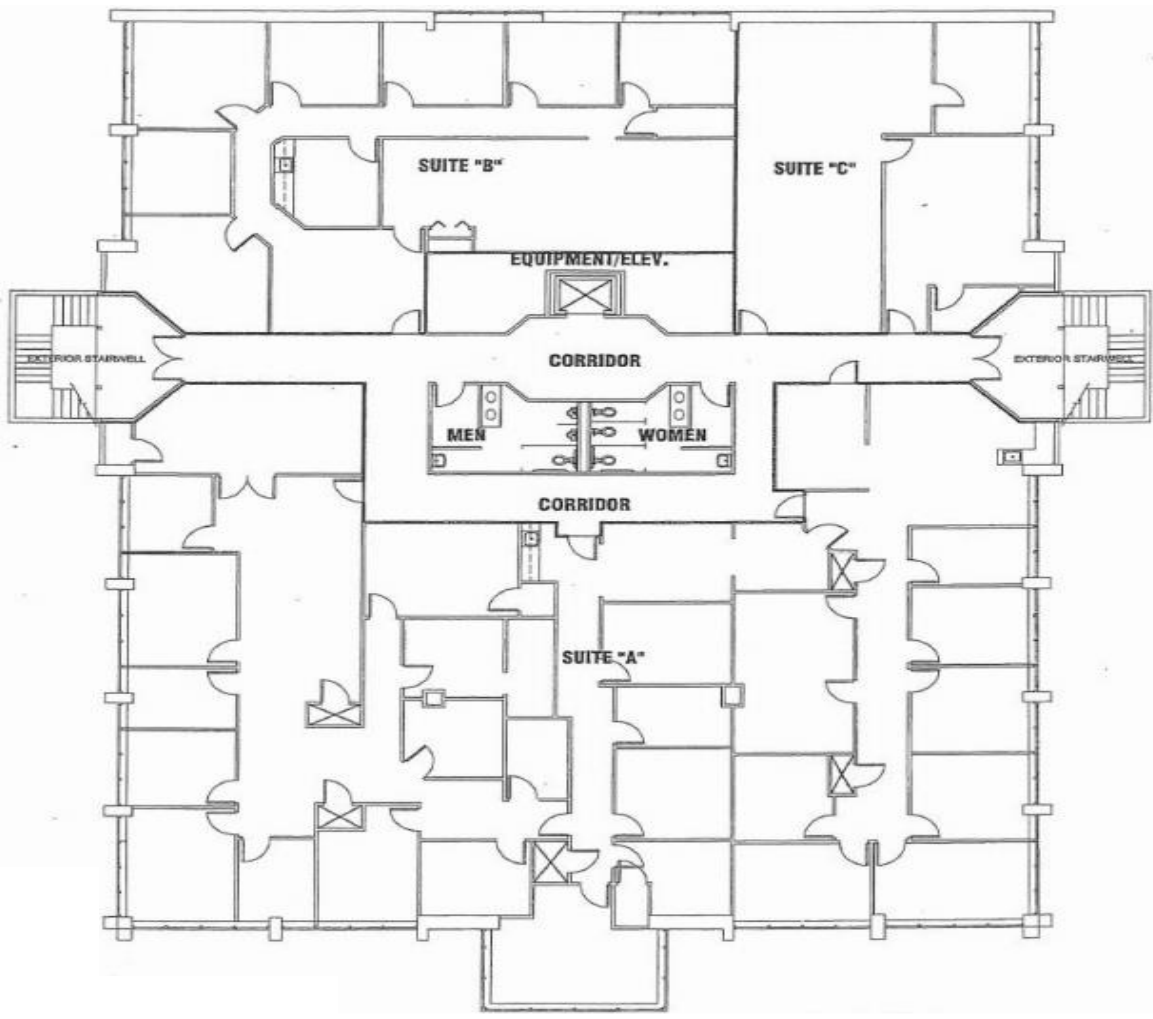
1700 City Farm  
Baton Rouge, LA 70806 USA  
225.295.0800  
[www.latterblum.com](http://www.latterblum.com)

# 3029 S. Sherwood Forest Blvd. Baton Rouge, LA 70809

The C.J Brown Building  
Office Space For Lease

## 2<sup>nd</sup> Floor – Suite 200

- 13,800 RSF



**Jonann Stutzman** **Ty Gose, CCIM**

225.445.0473

225.295.0800

jonann@latterblum.com

ty@latterblum.com

LICENSED IN LOUISIANA. NO WARRANTY OR REPRESENTATION, EXPRESS OR IMPLIED, IS MADE AS TO THE ACCURACY OF THE INFORMATION CONTAINED HEREIN, AND THE SAME IS SUBMITTED SUBJECT TO ERRORS, OMISSIONS, CHANGE OF PRICE, RENTAL OR OTHER CONDITIONS, PRIOR SALE, LEASE OR FINANCING, OR WITHDRAWAL WITHOUT NOTICE, AND OF ANY SPECIAL LISTING CONDITIONS IMPOSED BY OUR PRINCIPALS NO WARRANTIES OR REPRESENTATIONS ARE MADE AS TO THE CONDITION OF THE PROPERTY OR ANY HAZARDS CONTAINED THEREIN ARE ANY TO BE IMPLIED.

1700 City Farm  
Baton Rouge, LA 70806 USA

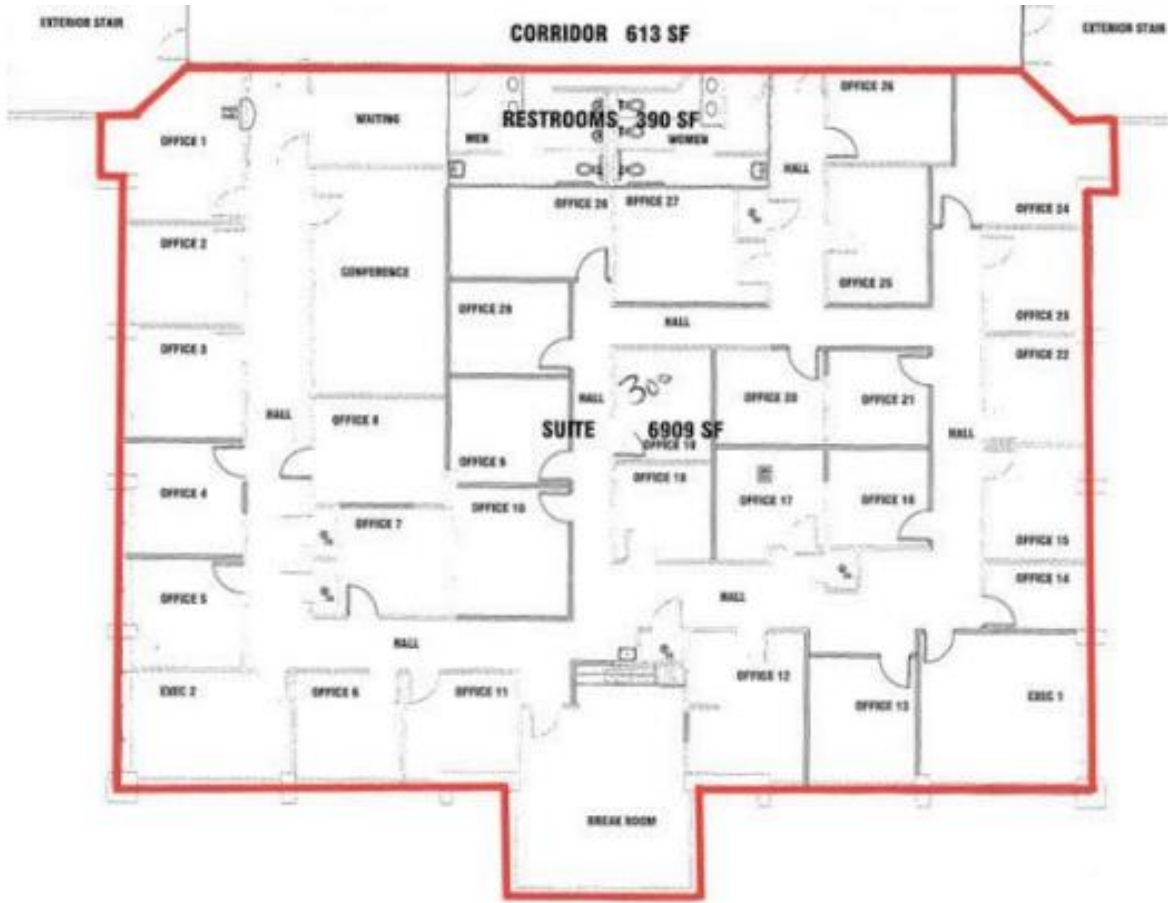
225.295.0800

[www.latterblum.com](http://www.latterblum.com)

3029 S. Sherwood Forest Blvd.  
Baton Rouge, LA 70809

The C.J Brown Building  
Office Space For Lease

3<sup>rd</sup> Floor – Suite 330  
• 7,945 RSF



**NAI** Latter & Blum

Jonann Stutzman Ty Gose, CCIM  
225.445.0473 225.295.0800  
jonann@latterblum.com ty@latterblum.com

LICENSED IN LOUISIANA. NO WARRANTY OR REPRESENTATION, EXPRESS OR IMPLIED, IS MADE AS TO THE ACCURACY OF THE INFORMATION CONTAINED HEREIN, AND THE SAME IS SUBMITTED SUBJECT TO ERRORS, OMISSIONS, CHANGE OF PRICE, RENTAL OR OTHER CONDITIONS, PRIOR SALE, LEASE OR FINANCING, OR WITHDRAWAL WITHOUT NOTICE, AND OF ANY SPECIAL LISTING CONDITIONS IMPOSED BY OUR PRINCIPALS NO WARRANTIES OR REPRESENTATIONS ARE MADE AS TO THE CONDITION OF THE PROPERTY OR ANY HAZARDS CONTAINED THEREIN ARE ANY TO BE IMPLIED.

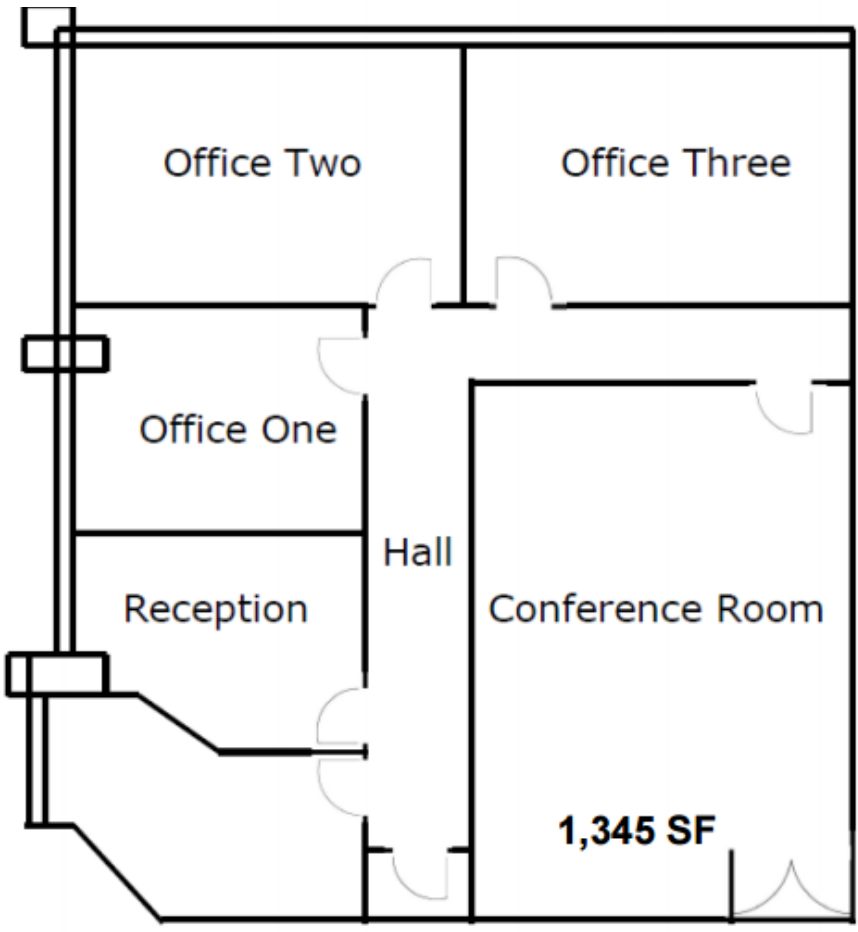
1700 City Farm  
Baton Rouge, LA 70806 USA  
225.295.0800  
[www.latterblum.com](http://www.latterblum.com)

**3029 S. Sherwood Forest Blvd.  
Baton Rouge, LA 70809**

The C.J Brown Building  
Office Space For Lease

**3<sup>rd</sup> Floor – Suite 325**

- 1,345 RSF



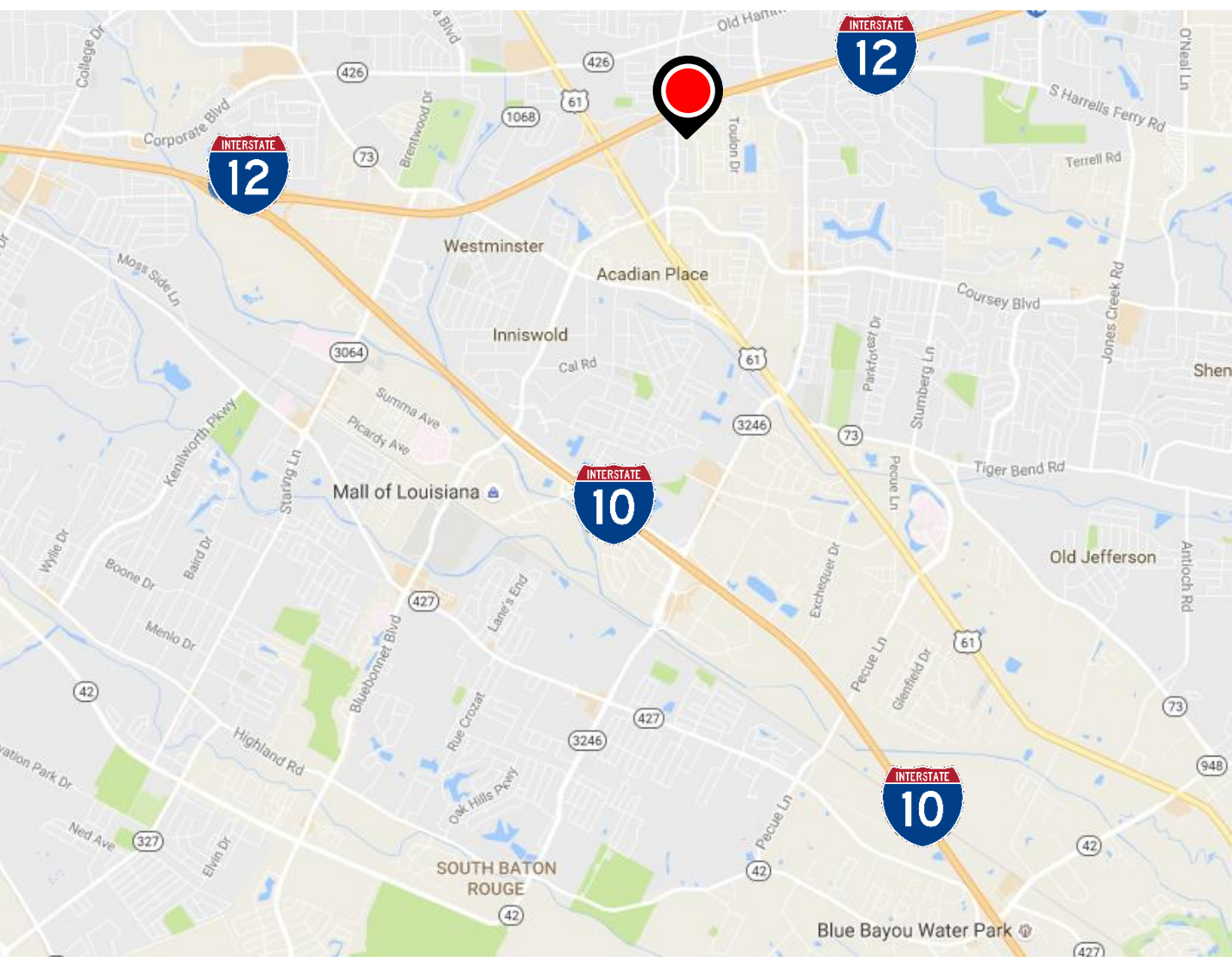
**Jonann Stutzman**   **Ty Gose, CCIM**  
225.445.0473   225.295.0800  
jonann@latterblum.com   ty@latterblum.com

LICENSED IN LOUISIANA. NO WARRANTY OR REPRESENTATION, EXPRESS OR IMPLIED, IS MADE AS TO THE ACCURACY OF THE INFORMATION CONTAINED HEREIN, AND THE SAME IS SUBMITTED SUBJECT TO ERRORS, OMISSIONS, CHANGE OF PRICE, RENTAL OR OTHER CONDITIONS, PRIOR SALE, LEASE OR FINANCING, OR WITHDRAWAL WITHOUT NOTICE, AND OF ANY SPECIAL LISTING CONDITIONS IMPOSED BY OUR PRINCIPALS NO WARRANTIES OR REPRESENTATIONS ARE MADE AS TO THE CONDITION OF THE PROPERTY OR ANY HAZARDS CONTAINED THEREIN ARE ANY TO BE IMPLIED.

1700 City Farm  
Baton Rouge, LA 70806 USA  
225.295.0800  
[www.latterblum.com](http://www.latterblum.com)

# 3029 S. Sherwood Forest Blvd. Baton Rouge, LA 70809

The C.J Brown Building  
Office Space For Lease



**NAI** Latter & Blum

**Jonann Stutzman** Ty Gose, CCIM  
225.445.0473 225.295.0800  
jonann@latterblum.com ty@latterblum.com

LICENSED IN LOUISIANA. NO WARRANTY OR REPRESENTATION, EXPRESS OR IMPLIED, IS MADE AS TO THE ACCURACY OF THE INFORMATION CONTAINED HEREIN, AND THE SAME IS SUBMITTED SUBJECT TO ERRORS, OMISSIONS, CHANGE OF PRICE, RENTAL OR OTHER CONDITIONS, PRIOR SALE, LEASE OR FINANCING, OR WITHDRAWAL WITHOUT NOTICE, AND OF ANY SPECIAL LISTING CONDITIONS IMPOSED BY OUR PRINCIPALS NO WARRANTIES OR REPRESENTATIONS ARE MADE AS TO THE CONDITION OF THE PROPERTY OR ANY HAZARDS CONTAINED THEREIN ARE ANY TO BE IMPLIED.

1700 City Farm  
Baton Rouge, LA 70806 USA  
225.295.0800  
[www.latterblum.com](http://www.latterblum.com)