



Keegan & Coppin
COMPANY, INC.

FOR LEASE

3485 AIRWAY DRIVE, UNIT G
SANTA ROSA, CA

INDUSTRIAL WAREHOUSE
SPACE AVAILABLE



Go beyond broker.

REPRESENTED BY:

BRIAN KEEGAN, PARTNER
LIC # 01809537 (707) 528-1400, EXT 249
BKEEGAN@KEEGANCOPPIN.COM

NATHAN FLYNN, AGENT
LIC # 02242483 (707) 528-1400, EXT 773
NFLYNN@KEEGANCOPPIN.COM



3485 AIRWAY DRIVE
UNIT G
SANTA ROSA, CA

**WAREHOUSE
FOR LEASE**

PROPERTY DETAILS

PROPERTY HIGHLIGHTS

- Unit G: 1,218+/- sf Warehouse

LEASE RATE

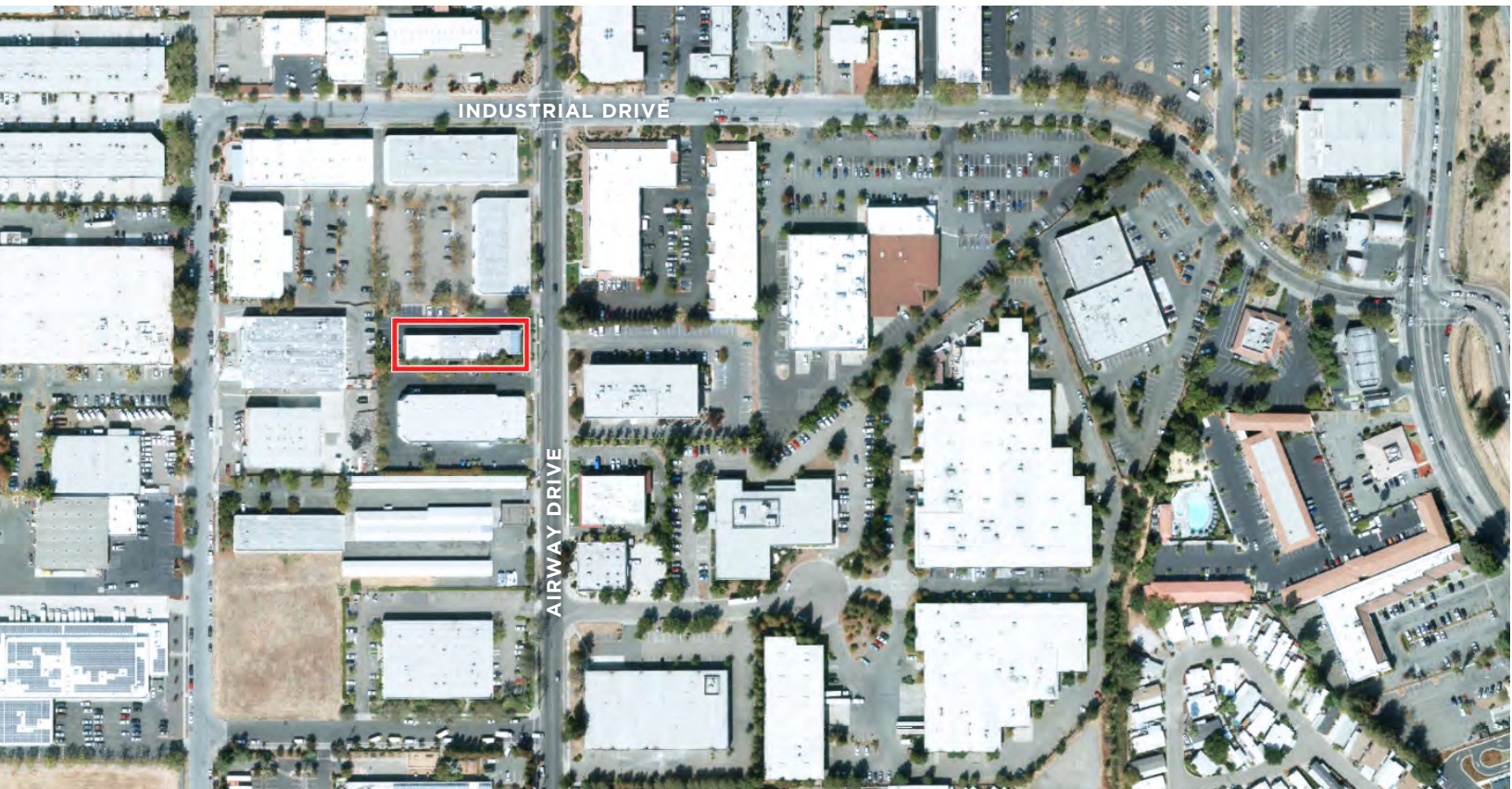
\$1.30 per sq ft Industrial Gross

LEASE TERM

No CAMs or pass through

DESCRIPTION

Open showroom with large glass windows. The retail space has great lighting and street visibility. Private restroom and multiple rooms or storage closets.



REPRESENTED BY:

BRIAN KEEGAN, PARTNER
KEEGAN & COPPIN CO., INC.
LIC # 01809537 (707) 528-1400, EXT 249
BKEEGAN@KEEGANCOPPIN.COM

NATHAN FLYNN, AGENT
KEEGAN & COPPIN CO., INC.
LIC # 02242483 (707) 528-1400, EXT 773
NFLYNN@KEEGANCOPPIN.COM

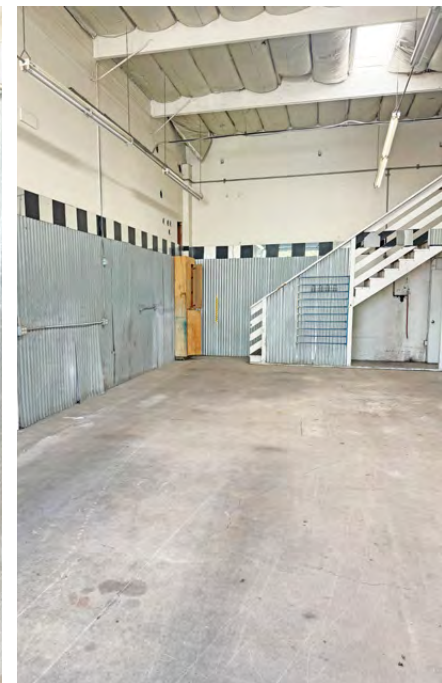
The above information, while not guaranteed, has been secured from sources we believe to be reliable. Submitted subject to error, change or withdrawal. An interested party should verify the status of the property and the information herein.



3485 AIRWAY DRIVE
UNIT G
SANTA ROSA, CA

**WAREHOUSE
FOR LEASE**

UNIT G PHOTOS



REPRESENTED BY: BRIAN KEEGAN, PARTNER
KEEGAN & COPPIN CO., INC.
LIC # 01809537 (707) 528-1400, EXT 249
BKEEGAN@KEEGANCOPPIN.COM

NATHAN FLYNN, AGENT
KEEGAN & COPPIN CO., INC.
LIC # 02242483 (707) 528-1400, EXT 773
NFLYNN@KEEGANCOPPIN.COM

The above information, while not guaranteed, has been secured from sources we believe to be reliable. Submitted subject to error, change or withdrawal. An interested party should verify the status of the property and the information herein.



3485 AIRWAY DRIVE
UNIT G
SANTA ROSA, CA

**WAREHOUSE
FOR LEASE**

PROPERTY PHOTOS



3485 AIRWAY DRIVE

REPRESENTED BY: BRIAN KEEGAN, PARTNER
KEEGAN & COPPIN CO., INC.
LIC # 01809537 (707) 528-1400, EXT 249
BKEEGAN@KEEGANCOPPIN.COM

NATHAN FLYNN, AGENT
KEEGAN & COPPIN CO., INC.
LIC # 02242483 (707) 528-1400, EXT 773
NFLYNN@KEEGANCOPPIN.COM

The above information, while not guaranteed, has been secured from sources we believe to be reliable. Submitted subject to error, change or withdrawal. An interested party should verify the status of the property and the information herein.



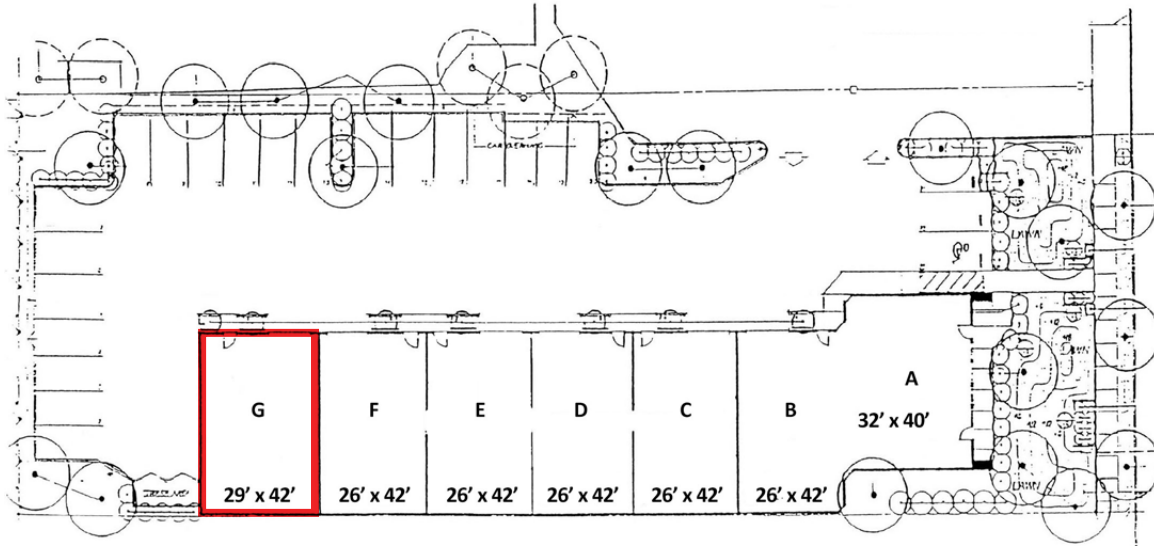
Keegan & Coppin
COMPANY, INC.



3485 AIRWAY DRIVE
UNIT G
SANTA ROSA, CA

**WAREHOUSE
FOR LEASE**

SITE PLAN

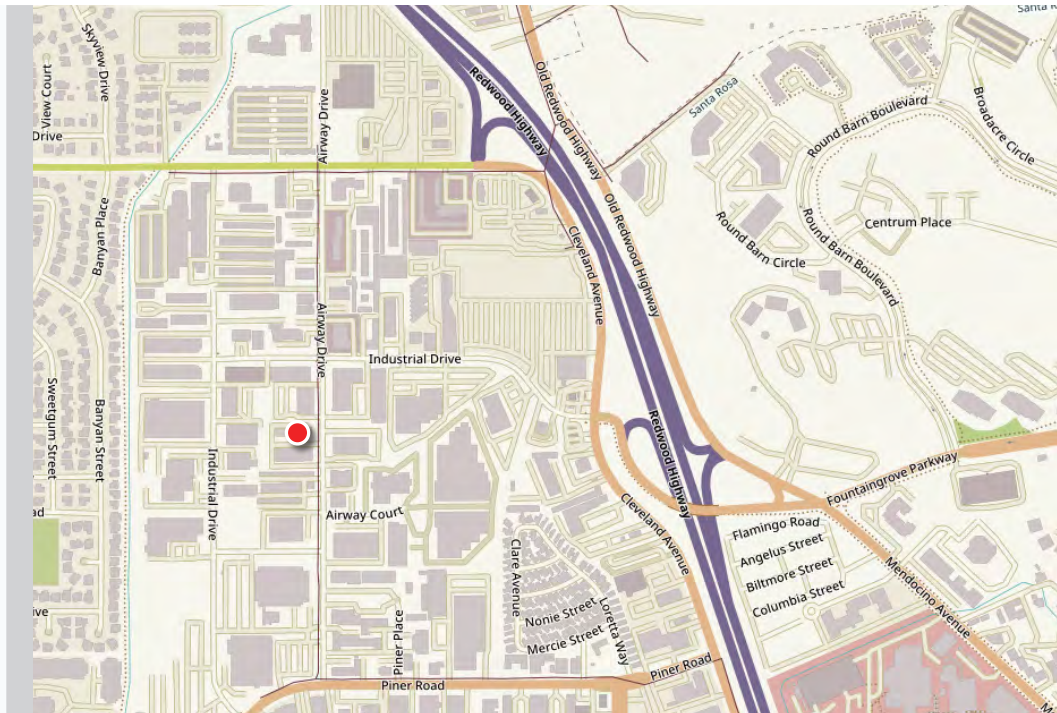


AREA DESCRIPTION

DESCRIPTION OF AREA

Easy access to Highway 101 off southbound Hopper Avenue exit or from south on Airway Drive.

Surrounding businesses include: Kohl's Department Store, Harbor Freight, Taco Bell, Applebee's, Starbucks, 24-Hour Fitness, Bottle Barn, restaurants, and several hotels.



REPRESENTED BY: BRIAN KEEGAN, PARTNER
KEEGAN & COPPIN CO., INC.
LIC # 01809537 (707) 528-1400, EXT 249
BKEEGAN@KEEGANCOPPIN.COM

NATHAN FLYNN, AGENT
KEEGAN & COPPIN CO., INC.
LIC # 02242483 (707) 528-1400, EXT 773
NFLYNN@KEEGANCOPPIN.COM

The above information, while not guaranteed, has been secured from sources we believe to be reliable. Submitted subject to error, change or withdrawal. An interested party should verify the status of the property and the information herein.



3485 AIRWAY DRIVE
UNIT G
SANTA ROSA, CA

**WAREHOUSE
FOR LEASE**



Keegan & Coppin Co., Inc.
1355 N Dutton Ave., Suite 100
Santa Rosa, CA 95401
keegancoppin.com
P: (707) 528-1400

REPRESENTED BY:

BRIAN KEEGAN, PARTNER
LIC # 01809537 (707) 528-1400, EXT 249
BKEEGAN@KEEGANCOPPIN.COM

NATHAN FLYNN, AGENT
LIC # 02242483 (707) 528-1400, EXT 773
NFLYNN@KEEGANCOPPIN.COM