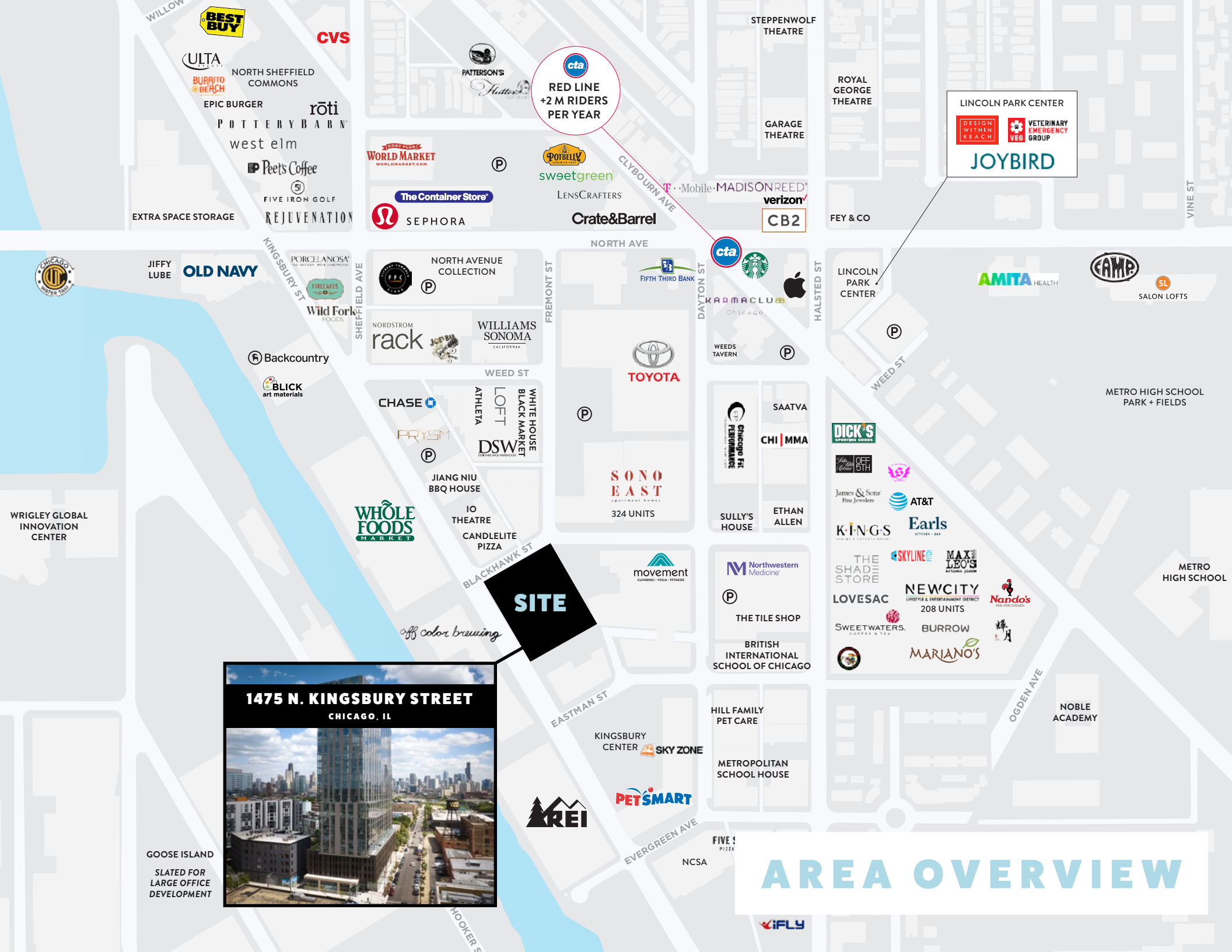


# 1475 N. KINGSBURY STREET CHICAGO, IL

SEC KINGSBURY & BLACKHAWK IN THE  
HEART OF LINCOLN PARK

CBRE



cta  
RED LINE  
+2 M RIDERS  
PER YEAR

LINCOLN PARK CENTER  
DESIGN WITHIN REACH  
VETERINARY EMERGENCY GROUP  
JOYBIRD

**SITE**



**1475 N. KINGSBURY STREET**  
CHICAGO, IL

GOOSE ISLAND  
SLATED FOR  
LARGE OFFICE  
DEVELOPMENT

# AREA OVERVIEW



WRIGLEY GLOBAL  
INNOVATION  
CENTER

BEST BUY  
ULTA  
BURRITO BEACH  
NORTH SHEFFIELD COMMONS  
EPIC BURGER  
POTTERY BARN  
west elm  
Peets Coffee  
FIVE IRON GOLF  
REJUVENATION  
EXTRA SPACE STORAGE

CVS  
PATTERSON'S  
WORLD MARKET  
The Container Store  
SEPHORA  
sweetgreen  
LENSCRAFTERS  
Crate&Barrel  
STEBBENWOLF THEATRE  
GARAGE THEATRE  
ROYAL GEORGE THEATRE  
Mobile  
MADISON REED  
verizon  
CB2

LINCOLN PARK CENTER  
AMITA HEALTH  
CAMP  
SL SALON LOFTS  
FEY & CO

JIFFY LUBE  
OLD NAVY  
PORCELANOSA  
Wild Fork FOODS  
Backcountry  
BLICK art materials

NORTH AVENUE COLLECTION  
NORDSTROM rack  
WILLIAMS SONOMA  
WEED ST  
CHASE  
PRYSM  
ATHLETA  
LOFT  
WHITE HOUSE  
BLACK MARKET  
DSW

TOYOTA  
SONO EAST  
324 UNITS  
Chicago Fit PERFORMANCE  
SAATVA  
CHI MMA  
SULLY'S HOUSE  
ETHAN ALLEN

LINCOLN PARK CENTER  
METRO HIGH SCHOOL PARK + FIELDS  
METRO HIGH SCHOOL

WHOLE FOODS MARKET  
JIANG NIU BBQ HOUSE  
IO THEATRE  
CANDLELITE PIZZA

CHASE  
PRYSM  
ATHLETA  
LOFT  
WHITE HOUSE  
BLACK MARKET  
DSW

SONO EAST  
324 UNITS  
Chicago Fit PERFORMANCE  
SAATVA  
CHI MMA  
SULLY'S HOUSE  
ETHAN ALLEN

DICK'S SPORTING GOODS  
OFF 5TH  
James & Sons Fine Jewelers  
AT&T  
Earls  
KING-S  
Earls  
THE SHADE STORE  
SKYLINE  
MAX LEON'S  
NEWCITY  
208 UNITS  
SWEETWATERS  
BURROW  
MARIANO'S

WHOLE FOODS MARKET  
JIANG NIU BBQ HOUSE  
IO THEATRE  
CANDLELITE PIZZA

CHASE  
PRYSM  
ATHLETA  
LOFT  
WHITE HOUSE  
BLACK MARKET  
DSW

SONO EAST  
324 UNITS  
Chicago Fit PERFORMANCE  
SAATVA  
CHI MMA  
SULLY'S HOUSE  
ETHAN ALLEN

DICK'S SPORTING GOODS  
OFF 5TH  
James & Sons Fine Jewelers  
AT&T  
Earls  
KING-S  
Earls  
THE SHADE STORE  
SKYLINE  
MAX LEON'S  
NEWCITY  
208 UNITS  
SWEETWATERS  
BURROW  
MARIANO'S

WHOLE FOODS MARKET  
JIANG NIU BBQ HOUSE  
IO THEATRE  
CANDLELITE PIZZA

CHASE  
PRYSM  
ATHLETA  
LOFT  
WHITE HOUSE  
BLACK MARKET  
DSW

SONO EAST  
324 UNITS  
Chicago Fit PERFORMANCE  
SAATVA  
CHI MMA  
SULLY'S HOUSE  
ETHAN ALLEN

DICK'S SPORTING GOODS  
OFF 5TH  
James & Sons Fine Jewelers  
AT&T  
Earls  
KING-S  
Earls  
THE SHADE STORE  
SKYLINE  
MAX LEON'S  
NEWCITY  
208 UNITS  
SWEETWATERS  
BURROW  
MARIANO'S

WHOLE FOODS MARKET  
JIANG NIU BBQ HOUSE  
IO THEATRE  
CANDLELITE PIZZA

CHASE  
PRYSM  
ATHLETA  
LOFT  
WHITE HOUSE  
BLACK MARKET  
DSW

SONO EAST  
324 UNITS  
Chicago Fit PERFORMANCE  
SAATVA  
CHI MMA  
SULLY'S HOUSE  
ETHAN ALLEN

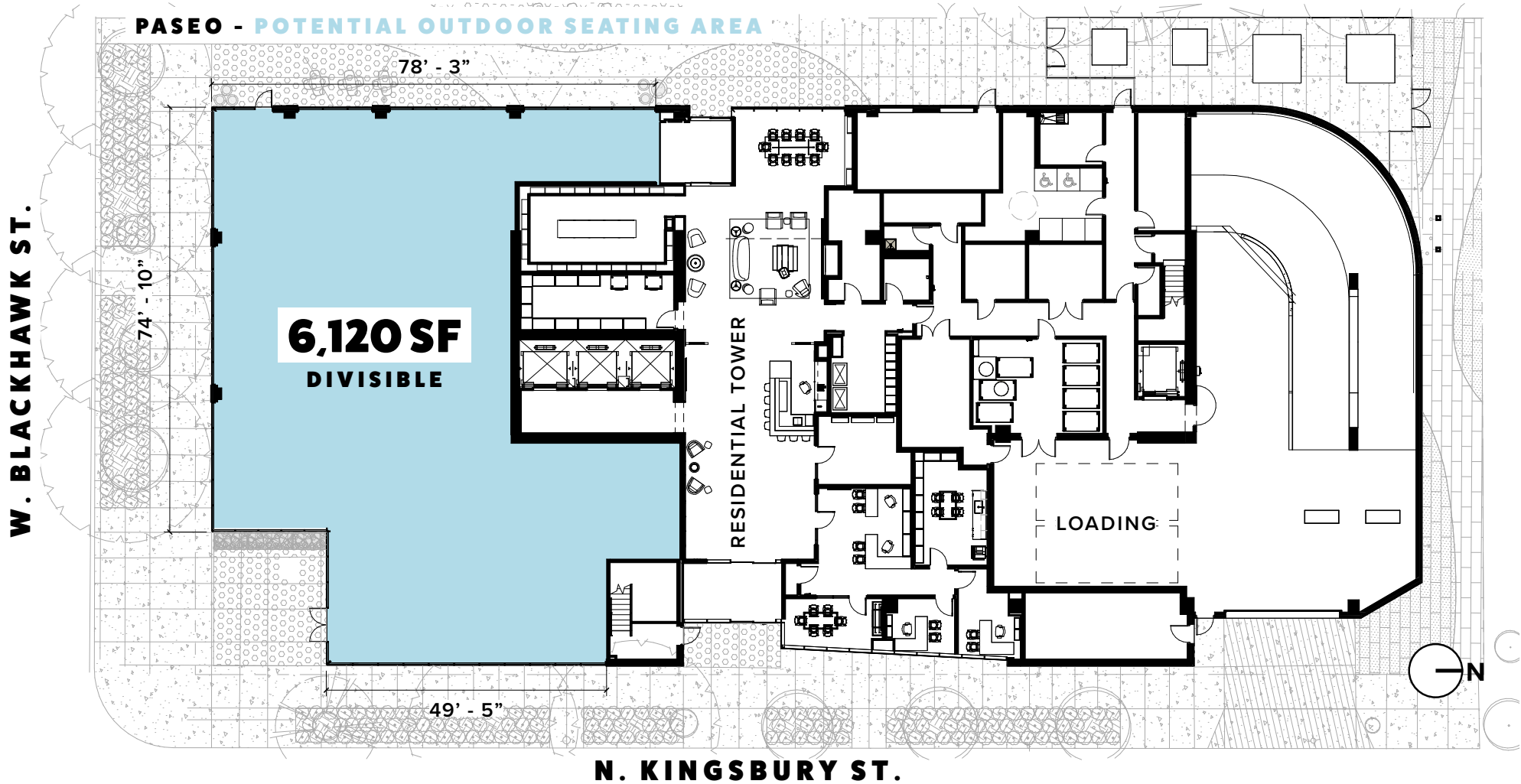
DICK'S SPORTING GOODS  
OFF 5TH  
James & Sons Fine Jewelers  
AT&T  
Earls  
KING-S  
Earls  
THE SHADE STORE  
SKYLINE  
MAX LEON'S  
NEWCITY  
208 UNITS  
SWEETWATERS  
BURROW  
MARIANO'S

# PROPERTY OVERVIEW

- 6,120 SF (divisible) of corner retail space in the heart of Lincoln Park
- The retail sits at the base of a 327 unit luxury apartment building
- Ideally located in close proximity to Whole Foods, REI, British International School of Chicago, Off Color Brewing Tap Room, PetSmart and many other great retailers and daily traffic generators
- Ceiling Heights Range: 13'10" - 16'8"
- Available Immediately



# SITE OVERVIEW



## AREA DEMOGRAPHICS

within one mile radius



**62,279**

DAYTIME POPULATION



**58,653**

POPULATION



**\$187,922**

HH INCOME



**\$253.5M**

CONSUMER EXPENDITURE DINING-OUT



**\$141.3M**

CONSUMER EXPENDITURE APPAREL

# 1475 N. KINGSBURY STREET

## CHICAGO, IL

SEC KINGSBURY & BLACKHAWK IN THE  
HEART OF LINCOLN PARK

FOR MORE INFORMATION, PLEASE CONTACT:

### STEPHEN ANSANI

T. 312.935.1907

E. [Stephen.Ansani@cbre.com](mailto:Stephen.Ansani@cbre.com)

### MICHAEL MALEN

T. 312.334.7232

E. [Michael.Malen@cbre.com](mailto:Michael.Malen@cbre.com)

### DANNY JACOBSON

T. 312.935.1901

E. [Danny.Jacobson@cbre.com](mailto:Danny.Jacobson@cbre.com)

**CBRE**