

# FOR LEASE

## *2,200± Sq. Ft. Office Space*



### *1246-1248 Fortna Avenue • Woodland, CA*

1,200± Sq. Ft. large open office space on East side of building  
connected by shared restroom  
to 375± Sq. Ft. & 425± Sq. Ft. office spaces on West side of building  
Storage room and two restroom  
1 ADA parking space in front of building  
Rent includes: PG&E, water/sewer, landscaping

It's possible to split space on each side of the restrooms

**Lease Rate: \$3,550.00/Month**

## **SALLING PROPERTIES INC.**

DRE No. 02201437

REAL ESTATE SALES, LEASING & PROPERTY MANAGEMENT

20 N. East Street, Suite 101, Woodland, CA 95776

Phone: (530) 666-5485 Website: [www.Sheffield-RealEstate.com](http://www.Sheffield-RealEstate.com)

E-Mail: [sallingproperties@kathysallingrealtor.com](mailto:sallingproperties@kathysallingrealtor.com)

The information contained herein has been obtained from sources we deem reliable. We cannot, however, assume responsibility for its accuracy.

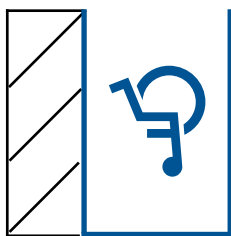
Listing Agent: **Bryan Sheffield, Agent**  
CalBRE: **02065645**  
Phone: **(530) 219-0281**  
E-Mail: **bsheffield100@gmail.com**

*2,200± Sq. Ft. Office Space*  
*1246-1248 Fortna Avenue • Woodland, CA*

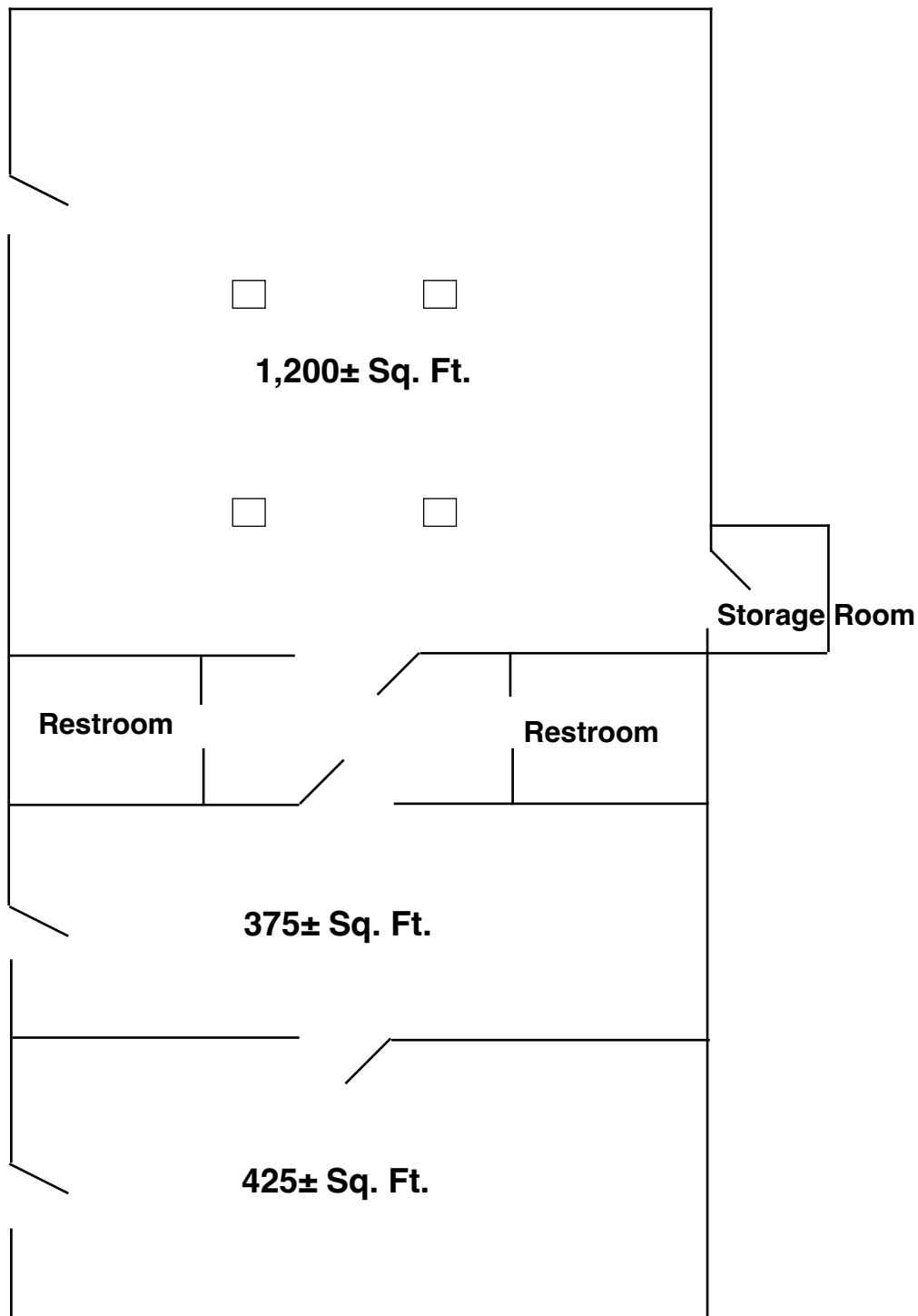


# 2,200± Sq. Ft. Office Space

## 1246-1248 Fortna Avenue • Woodland, CA



Fortna Avenue



\*Drawing Not To Scale

### SALLING PROPERTIES INC.

DRE No. 02201437

REAL ESTATE SALES, LEASING & PROPERTY MANAGEMENT

20 N. East Street, Suite 101, Woodland, CA 95776

Phone: (530) 666-5485 Website: [www.Sheffield-RealEstate.com](http://www.Sheffield-RealEstate.com)

E-Mail: [sallingproperties@kathysallingrealtor.com](mailto:sallingproperties@kathysallingrealtor.com)

The information contained herein has been obtained from sources we deem reliable. We cannot, however, assume responsibility for its accuracy.

Listing Agent: **Bryan Sheffield, Agent**

CalBRE: **02065645**

Phone: **(530) 219-0281**

E-Mail: **[bsheffield100@gmail.com](mailto:bsheffield100@gmail.com)**