

FOR LEASE

SYLVERTREE POMPANO

1411, 1421, 1451-1461 SW 12TH AVE, POMPANO BEACH, FL 33069

1451-C SW 12TH AVE



SPACE HIGHLIGHTS

- 1,180 SF
- 163 SF air-conditioned office
- 10' x 10' front grade level overhead door
- Private restroom
- 11'5" clear ceiling in warehouse



JAN STOLOW

Director of Property Management and Leasing
Direct: 954.491.5505 | Cell: 954.658.4479
jan@levyrai.com

NATALIE DELISLE

Property Manager / Sales Associate
954.678.2362
natalie@levyrai.com



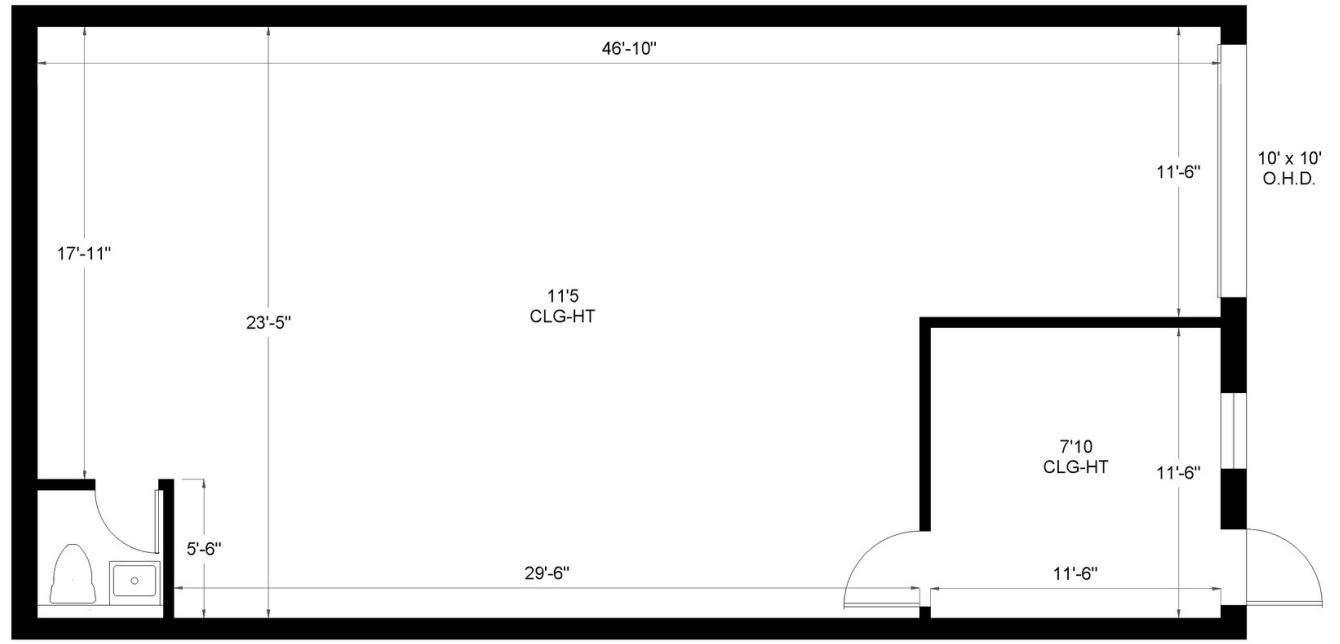
SYLVERTREE POMPANO

1411, 1421, 1451-1461 SW 12TH AVE, POMPANO BEACH, FL 33069

FLOOR PLAN

SYLVER TREE HOLDINGS, LLC

1451 SW 12th Avenue, Unit C | Pompano Beach, FL 33060



Office - 163 Sq. Ft.
Warehouse - 1,017 Sq. Ft.

1,180 Rentable Sq. Ft.
www.LevyRealtyAdvisors.com

JAN STOLOW

Director of Property Management and Leasing
Direct: 954.491.5505 | Cell: 954.658.4479
jan@levyrai.com

NATALIE DELISLE

Property Manager / Sales Associate
954.678.2362
natalie@levyrai.com

