

naiselect.com



291 E SHORE DRIVE

EAGLE, ID 83616

Class A Office in the Eagle River Development

NAISelect



PROPERTY INFORMATION

PROPERTY TYPE	Class A Office in the Eagle River Development
ADDRESS	291 E Shore Dr, Eagle, ID 83616
SUITE	200 - Divisible ±2,929 to 7,323 RSF ±2,491 to 6,228 USF
RENT	\$28.00/SF (FSEJ)
BUILDING SIZE	±15,820 SF
TI ALLOWANCE	Negotiable
PARKING	4:1000
LEASE TYPE	FSEJ
# OF FLOORS	2
PARKING	Ample

HIGHLIGHTS

- A 90-acre Class A mixed-use development along the Boise River with area amenities including restaurants, retail, hotel, parks, and medical facilities
- Located at the prominent intersection of Eagle Road and State Highway 44
- Lake views with outside patios

This information was obtained from sources believed reliable but cannot be guaranteed and is subject to change at any time. Any opinions or estimates are used for example only.

208.229.6015 | mike@naiselect.com
MIKE ERKMANN, CCIM

208.229.6002 | ben@naiselect.com
BEN KNEADLER, CCIM

NAI SELECT | 5571 N. GLENWOOD ST., BOISE, ID 83714 | 208.229.2020

NAISelect

291 E Shore Dr EAGLE, ID 83616

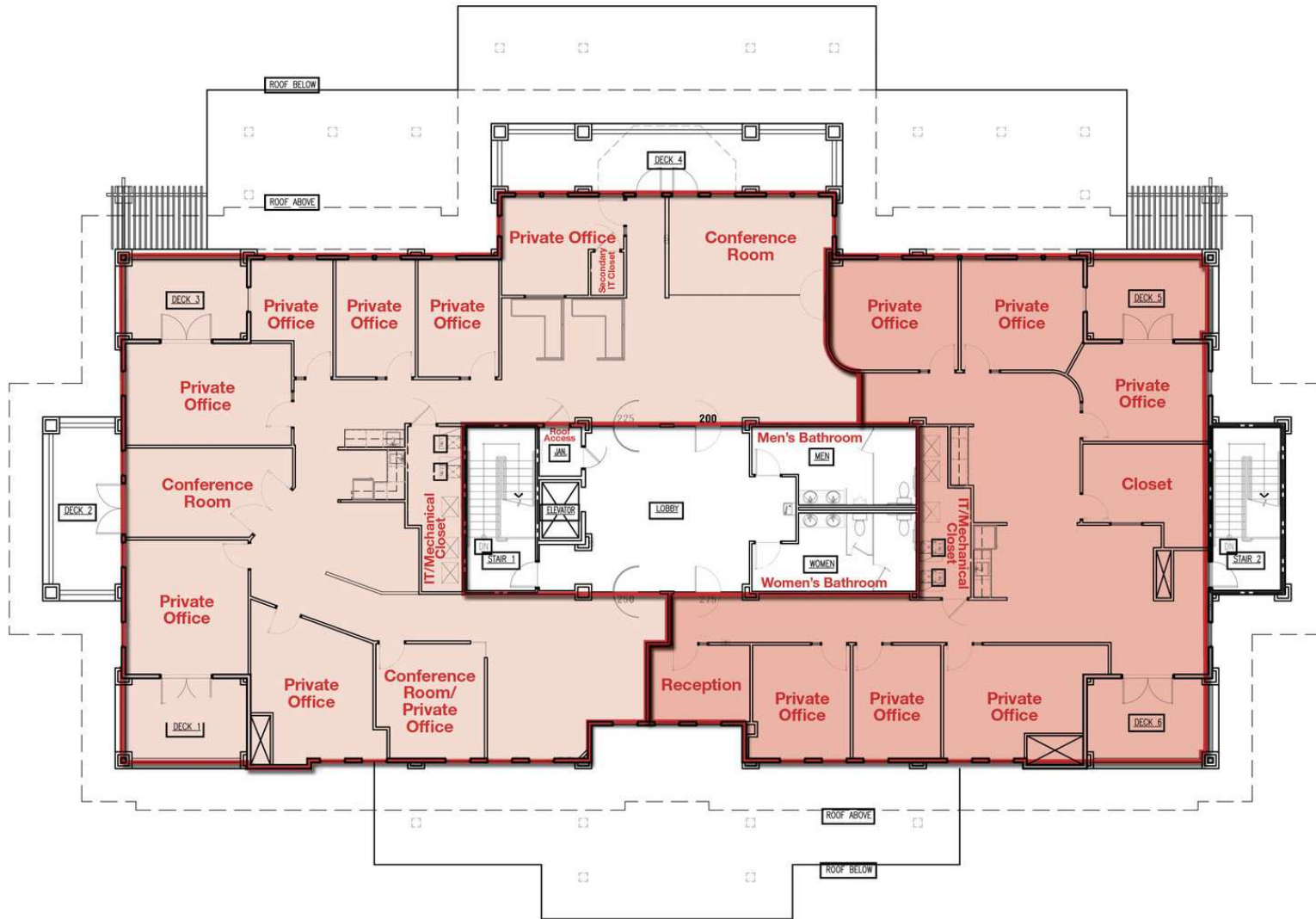


208.229.6015 | mike@naiselect.com
MIKE ERKMANN, CCIM

208.229.6002 | ben@naiselect.com
BEN KNEADLER, CCIM

NAI SELECT | 5571 N. GLENWOOD ST., BOISE, ID 83714 | 208.229.2020

NAISelect

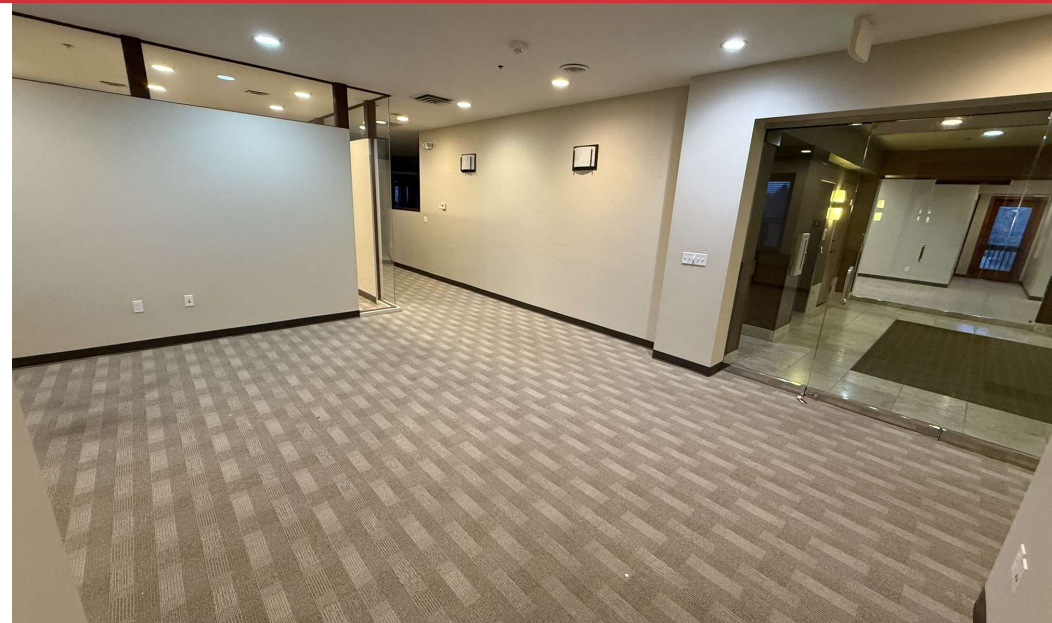


SECOND FLOOR PLAN

SCALE: 1/16" = 1'-0"

9-8-23





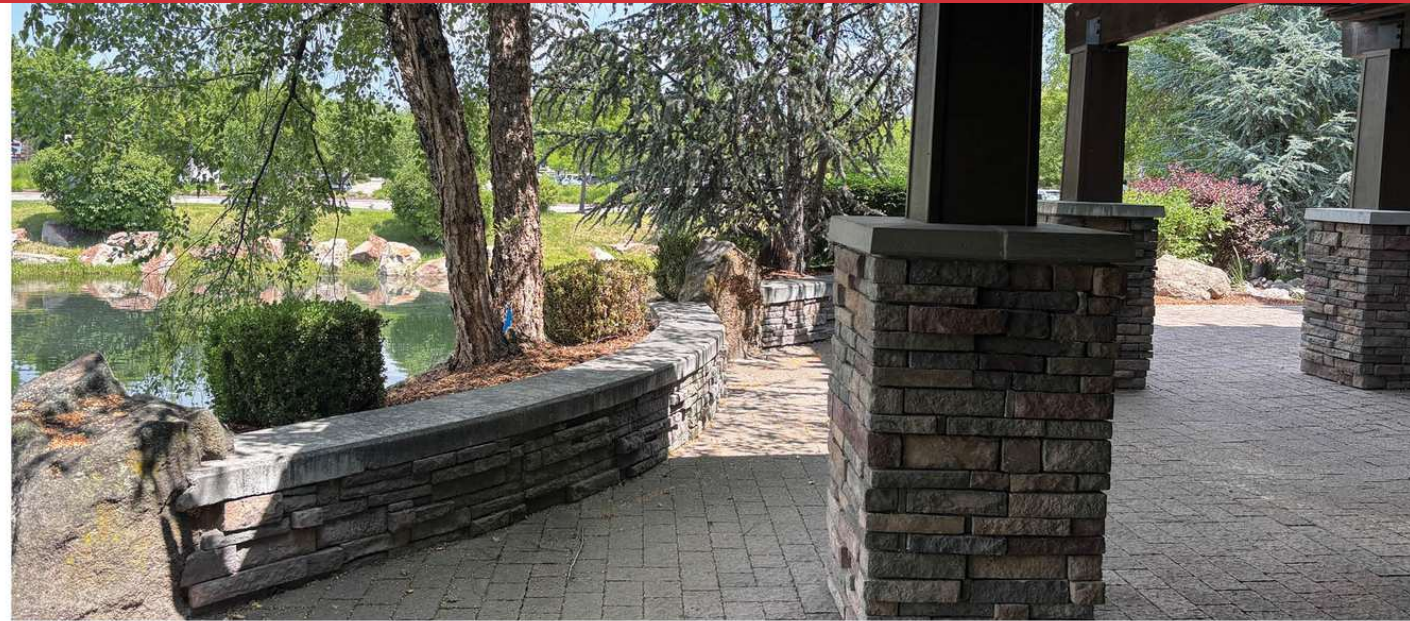
208.229.6015 | mike@naiselect.com
MIKE ERKMANN, CCIM

208.229.6002 | ben@naiselect.com
BEN KNEADLER, CCIM



208.229.6015 | mike@naiselect.com
MIKE ERKMANN, CCIM

208.229.6002 | ben@naiselect.com
BEN KNEADLER, CCIM



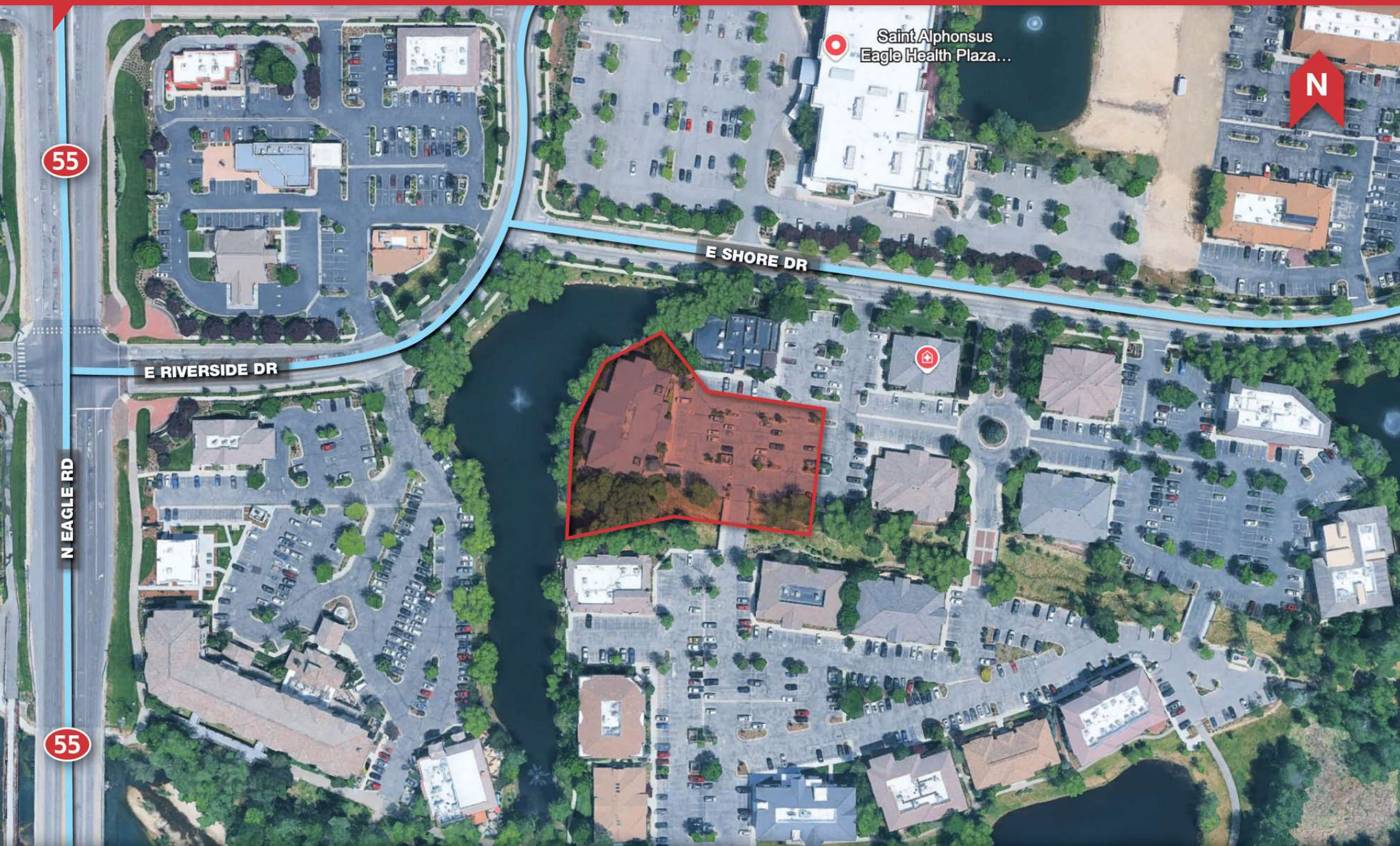
208.229.6015 | mike@naiselect.com
MIKE ERKMANN, CCIM

208.229.6002 | ben@naiselect.com
BEN KNEADLER, CCIM



208.229.6015 | mike@naiselect.com
MIKE ERKMANN, CCIM

208.229.6002 | ben@naiselect.com
BEN KNEADLER, CCIM



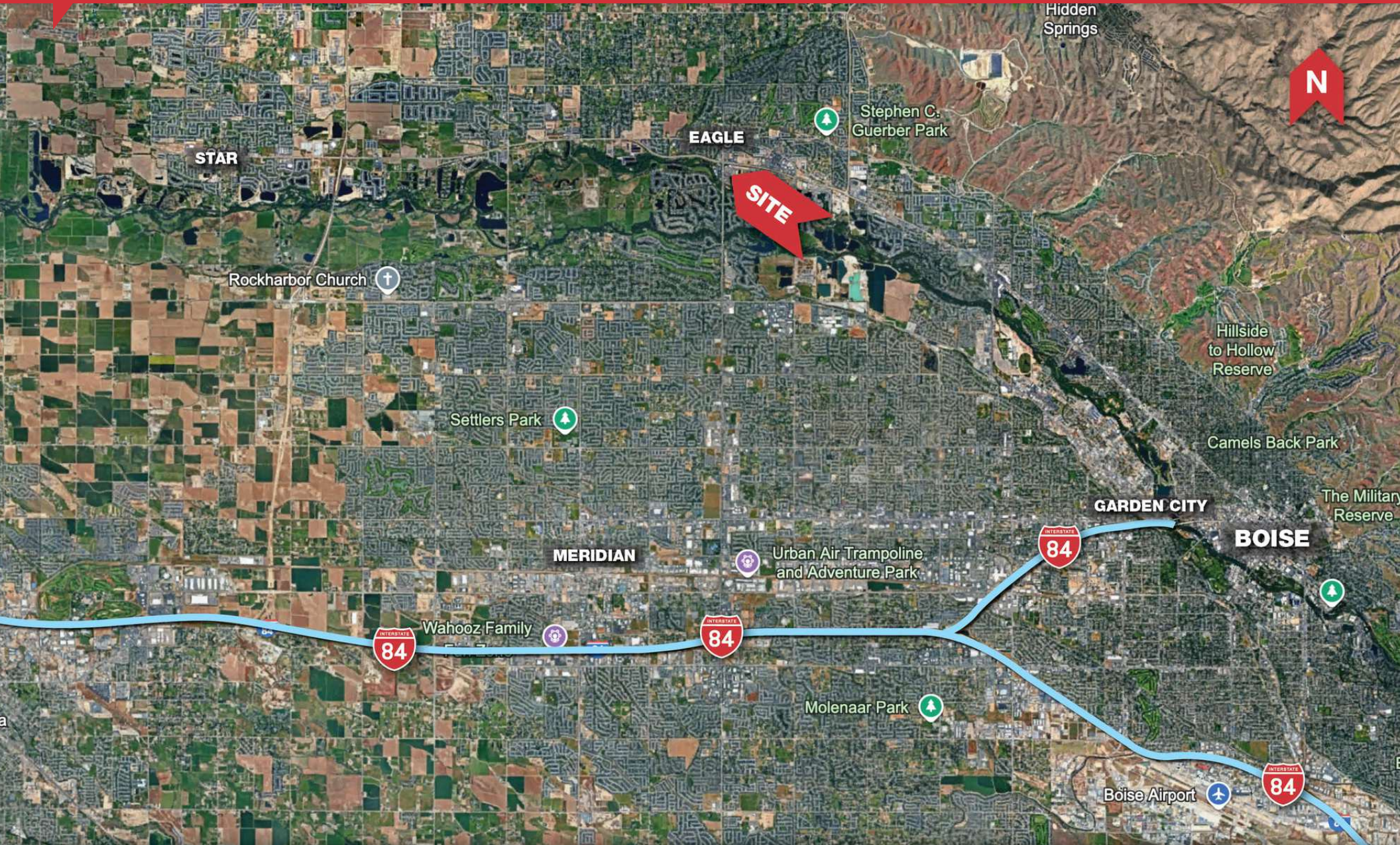
208.229.6015 | mike@naiselect.com
MIKE ERKMANN, CCIM

208.229.6002 | ben@naiselect.com
BEN KNEADLER, CCIM



208.229.6015 | mike@naiselect.com
MIKE ERKMANN, CCIM

208.229.6002 | ben@naiselect.com
BEN KNEADLER, CCIM



208.229.6015 | mike@naiselect.com
MIKE ERKMANN, CCIM

208.229.6002 | ben@naiselect.com
BEN KNEADLER, CCIM