

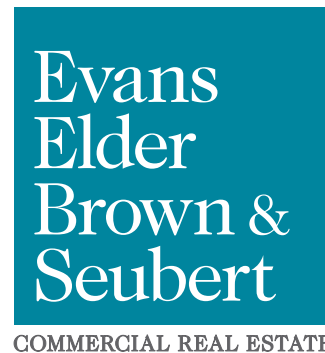
FOR LEASE

Class A Office Space

Holly Square
2295 Coburg Road
Eugene OR 97401

SUITE 201 DETAILS

- Approximately 506 RSF including reception area, 1 private office, and small work area
- Good on-site parking
- Excellent location at Coburg Road & Beltline Highway Intersection
- **\$750.00 per month, modified gross**
(In addition to base rent tenant pays their pro-rata share of utilities, janitorial and garbage service; approximately 34¢ per square foot per month)



CONTACT

Stephanie Seubert
stephanie@eebcre.com

Jackson Seubert
jackson@eebcre.com

541.345.4860

Licensed in the State of Oregon.

Second Floor Plan

Holly Square
2295 Coburg Road | Eugene OR 97401

Evans
Elder
Brown &
Seubert

COMMERCIAL REAL ESTATE

CONTACT

**Stephanie
Seubert**

stephanie@eebcre.com

**Jackson
Seubert**

jackson@eebcre.com

541.345.4860

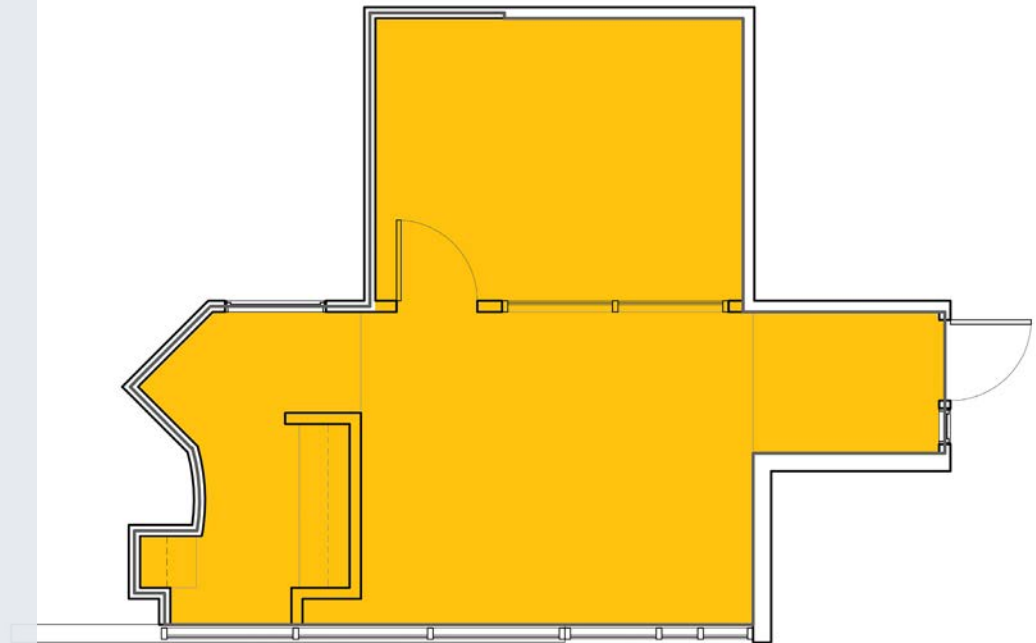
101 East Broadway
Suite #101
Eugene, OR 97401

Licensed in the
State of Oregon.

Suite 201

APPROXIMATELY 506 RSF

- Suite 201 consists of a reception area, 1 private office, and small work area
- Large windows provide abundant natural light
- Access to common area restrooms
- \$750.00 per month, modified gross
(In addition to base rent tenant pays their pro-rata share of utilities, janitorial and garbage service; approximately 34¢ per square foot per month)

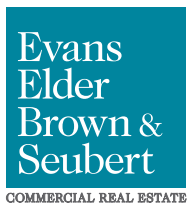


2295 COBURG RD

SUITE 201
EUGENE, OR

Location

Holly Square
2295 Coburg Road | Eugene OR 97401



CONTACT

541.345.4860

Stephanie Seubert
stephanie@eebcre.com

Jackson Seubert
jackson@eebcre.com