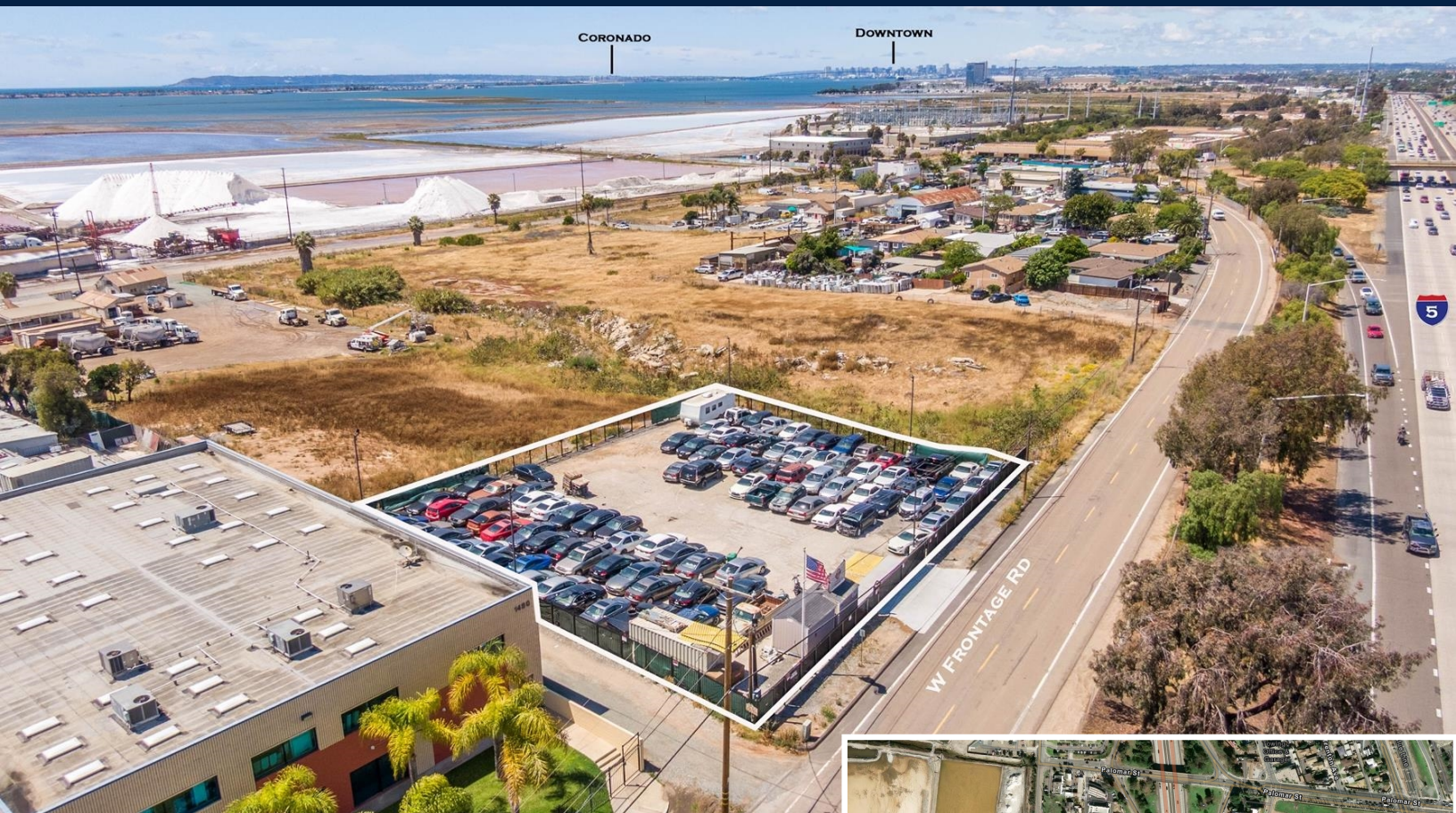


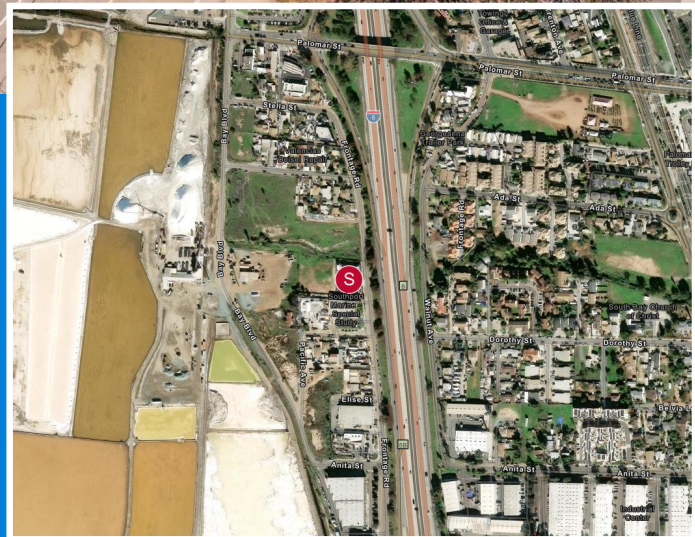
FOR SALE: \$1,800,000 approx. 21,417sf lot

**1450 W Frontage Rd
Chula Vista CA 91911**



HIGHLIGHTS:

- » Great location on Frontage road along the I-5 freeway
- » High visibility and easy access to the 5 freeway just 2 miles from the Chula Vista Bayfront and the Gaylord Pacific Hotel
- » 21,417 sf M-5-2 Industrial zoned fully lit and secure lot
- » Fencing (8ft), surveillance cameras, controlled access with one 30ft automatic gate and one pedestrian gate
- » 175 frontage facing I-5 freeway- great signage & visibility
- » Flat lot with water, power, interne and compacted with Class II Base
- » Turn key property- \$1,800,000



Exclusively Marketed by:

Bob Rodrigues

Real Properties Group Real Estate, Inc

Broker-Owner

(619) 987-6768

bob@rpgre.com

01864725

3687 Voltaire Street Suite A
San Diego, CA 92106

www.rpgre.com