

The flood map for the selected area is number **23005C0662F**, effective on **6/20/2024**

DYNAMIC MAP



MAP IMAGE



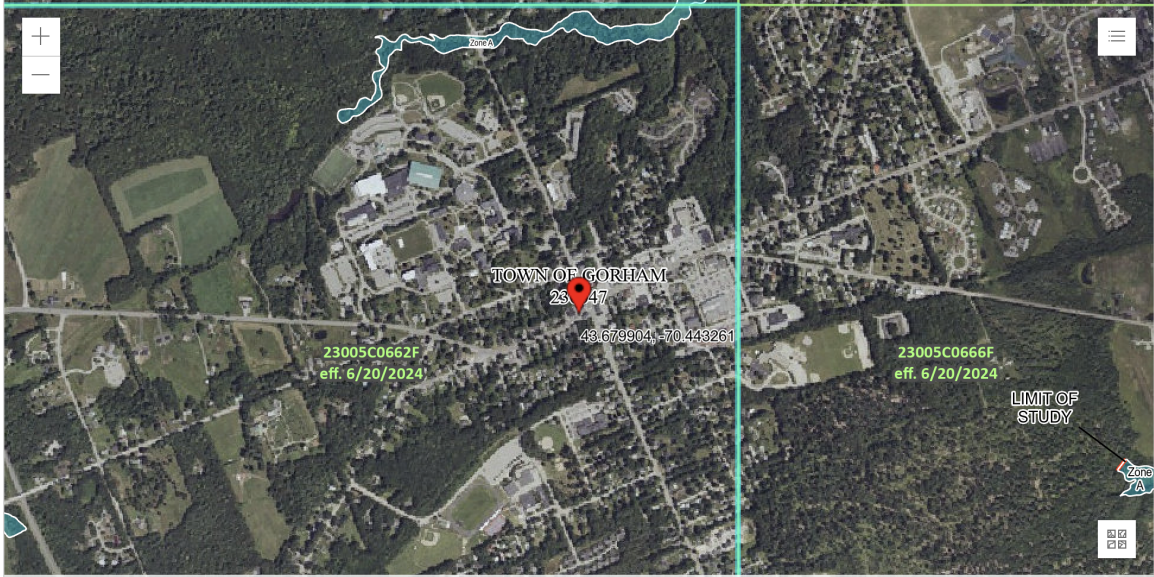
Changes to this FIRM ⓘ

- 📁 Revisions (0)
- 📁 Amendments (0)
- 📁 Revalidations (0)

is (FAQs)



You can choose a new flood map or move the location pin by selecting a different location on the locator map below or by entering a new location in the search field above. It may take a minute or more during peak hours to generate a dynamic FIRMette. [Go To NFHL Viewer »](#)



USDA, USGS The National Map: Orthoimagery. Data refreshed June, 2024.

Powered by Esri

PIN	Approximate location based on user input and does not represent an authoritative property location	SPECIAL FLOOD HAZARD AREAS	Without Base Flood Elevation (BFE) Zone A, V, AE, AH	Cross Sections with 1% Annual Chance Water Surface Elevation
	Selected FloodMap Boundary	Regulatory Floodway Zone AE, AD, AH, VE, AR	With BFE or Depth	Coastal Transect
		0.2% Annual Chance Flood Hazard, Areas	Base Flood Elevation Line (BFE)	Limit of Study