

# FOR LEASE “LANTERN HILL” OFFICE SUITES

**PENN'S GRANT REALTY**  
Corporation  
COMMERCIAL INDUSTRIAL INVESTMENT  
www.pgrealty.com

99 Lantern Drive, Doylestown Borough, Bucks County, PA

Office Suite 201B - 2,158 SF



**PRESENTED BY:**

KURT EISENSCHMID  
215-489-3800 x3 • Kurt@pgrealty.com

MATTHEW EISENSCHMID  
215-489-3800 x5 • Matthew@pgrealty.com

**Penn's Grant Realty Corporation - 2005 S Easton Rd, STE 306, Doylestown, PA**

**PROPERTY HIGHLIGHTS**

- Class "A" Office Building
- Abundant of Natural Light
- Easy access to Route 611 Bypass (1/10 mile)
- Restaurant & Retail Businesses Within One Block
- On-site Fitness Center

**AVAILABLE SUITES**

**SUITE 201B**

*Private Offices; Conference Room; Kitchenette; Open Work Area; Storage Area*

Suite Size: ..... 2,158± SF

Location in Building: ..... 2nd Floor

Lease Price: ..... \$23.50 per Sq. Ft., plus utilities & cleaning

**SUITE 301**

*Private Offices; Conference Room; Kitchenette*

Suite Size: ..... 2,478± SF

Location in Building: ..... 3rd Floor

Lease Price: ..... \$23.50 per Sq. Ft., plus utilities & cleaning

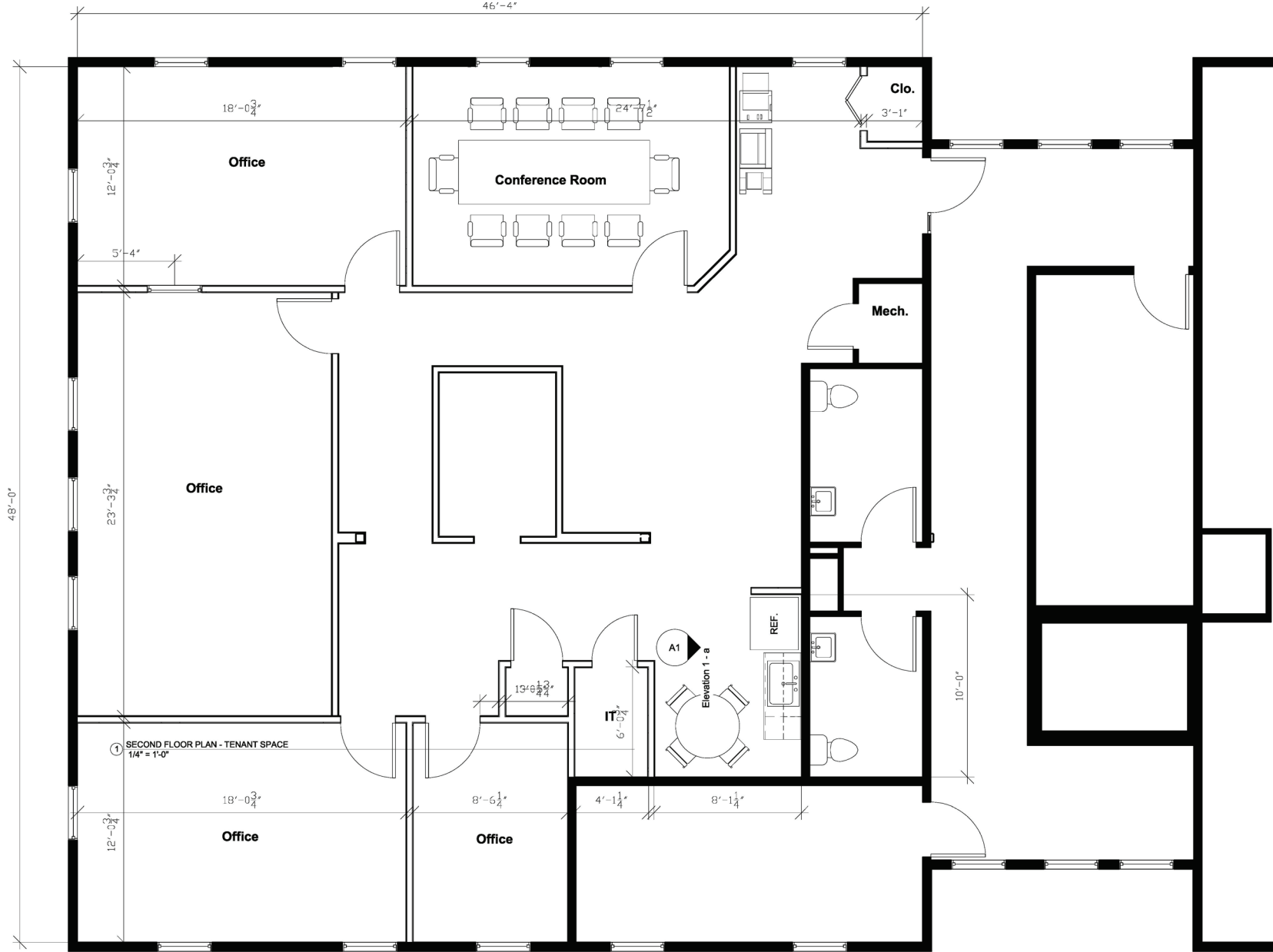


99 Lantern Drive, Doylestown, Bucks County, PA

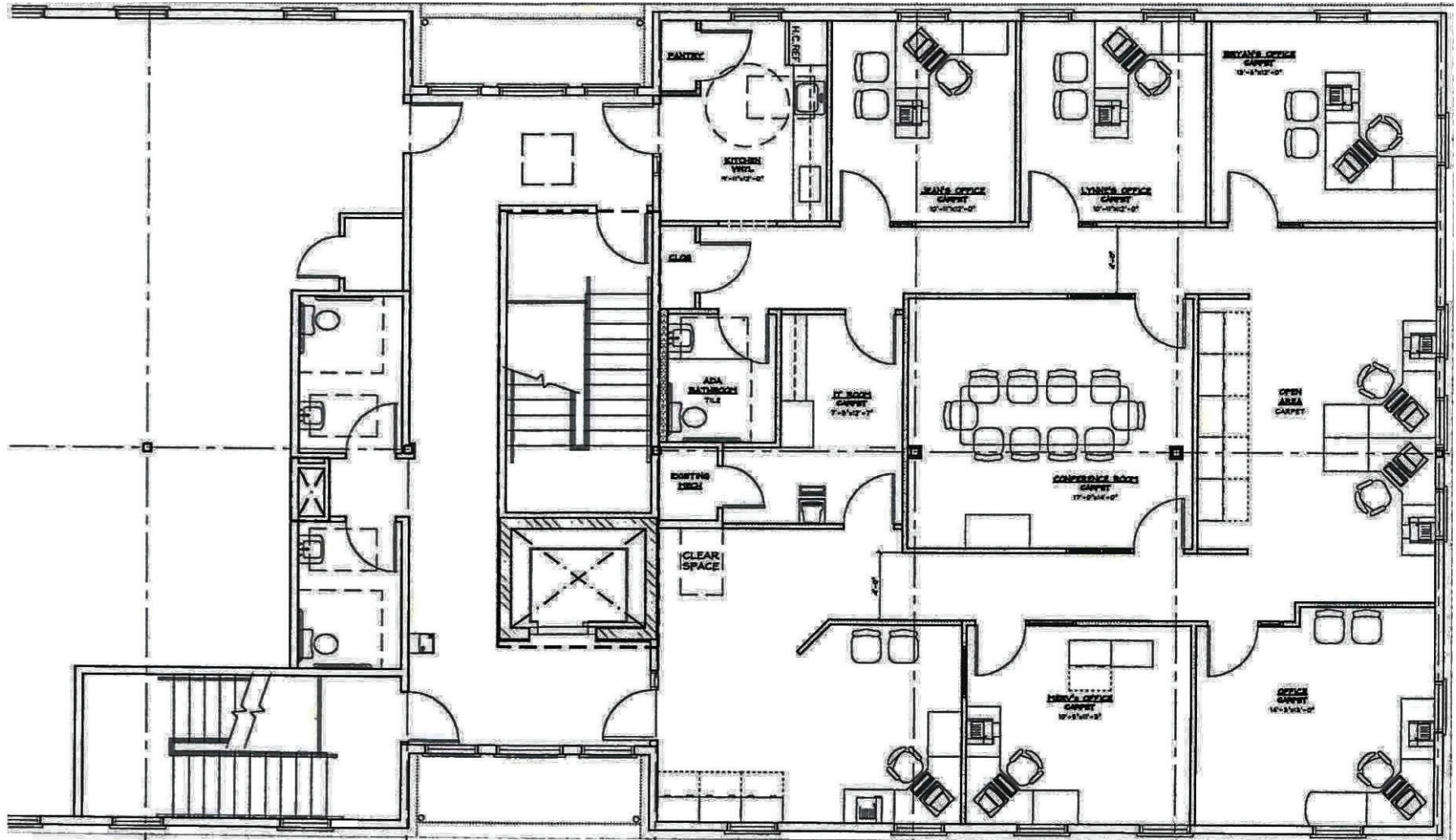
PENN'S GRANT REALTY  
Corporation



SUITE 201B - 2,158± SF



SUITE 201B - 2,158± SF



SUITE 301 - 2,478± SF

# 99 Lantern Drive, Doylestown, Bucks County, PA

