



COTTONWOOD CORPORATE CENTER

NOW LEASING



CUSHMAN &
WAKEFIELD

Hines



COTTONWOOD CORPORATE CENTER

COTTONWOOD CORPORATE CENTER

is one of Salt Lake City's most prestigious locations. Nestled at the foot of the Wasatch Mountains, the project overlooks nearly the entire Salt Lake Valley. Easy access to I-215 freeway and just 20 minutes away from downtown Salt Lake City, Park City and the Salt Lake City International Airport. Four ski resorts are also just minutes away, and nearby are several premier hotels, many popular restaurants and Old Mill Golf Course.

VIRTUAL TOUR CENTER



BUILDING 9
LOBBY

BUILDING 10/11
LOBBY

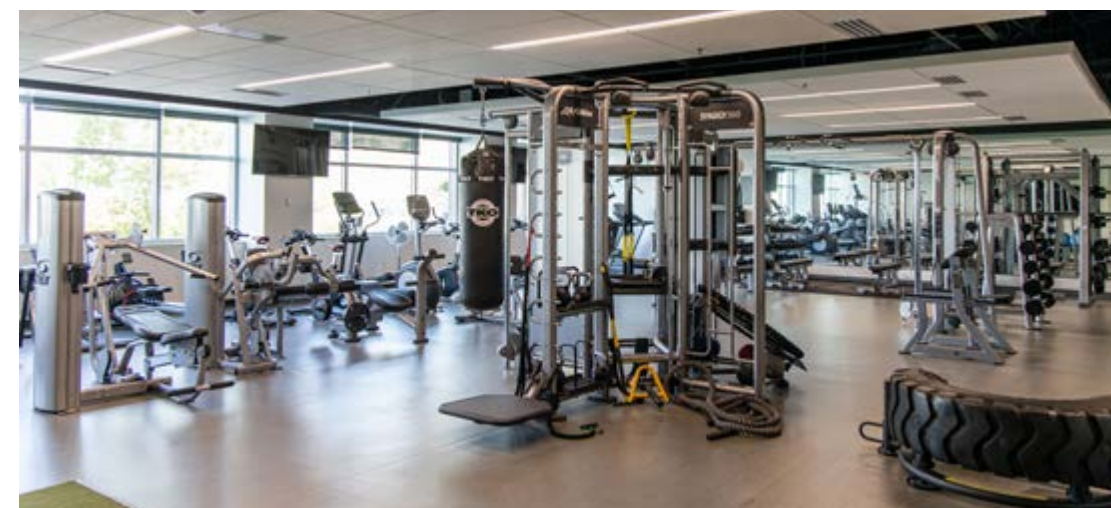
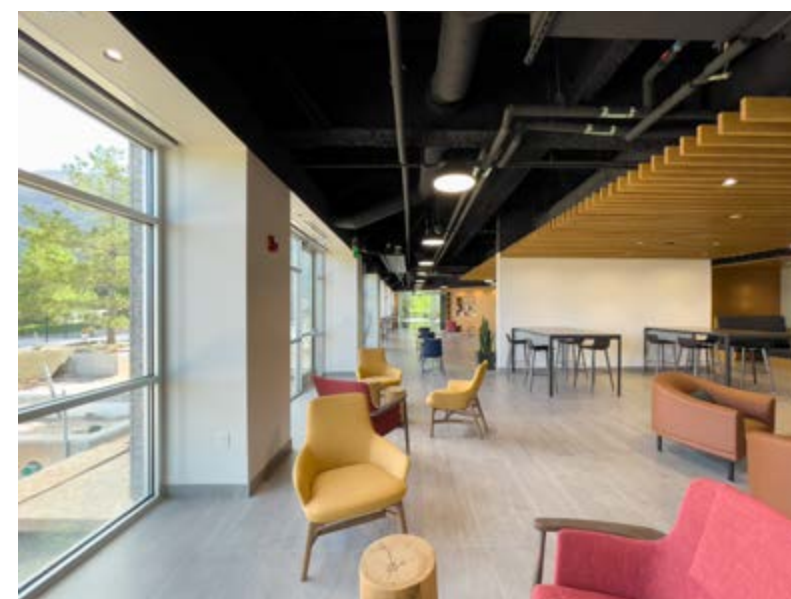
FITNESS
CENTER

MEN'S
LOCKERS

WOMEN'S
LOCKERS

i

AMENITY STRONG



NEW CONSTRUCTION
CONFERENCE
CENTER

TENANT LOUNGE

FITNESS CENTER

COMING SUMMER 2022
PATIO AREA

18 MINUTES TO
DOWNTOWN
SALT LAKE CITY

22 MINUTES TO
DOWNTOWN
PARK CITY

20 MINUTES TO
SALT LAKE CITY
INTERNATIONAL
AIRPORT

20 MINUTES TO
MAJOR SKI RESORTS
& OUTDOOR ACTIVITIES



LEASING INFORMATION

DANA BAIRD, CCIM
Executive Managing Director
(801) 303 5526
dana.baird@cushwake.com

MIKE RICHMOND
Executive Managing Director
(801) 303 5434
mike.richmond@cushwake.com

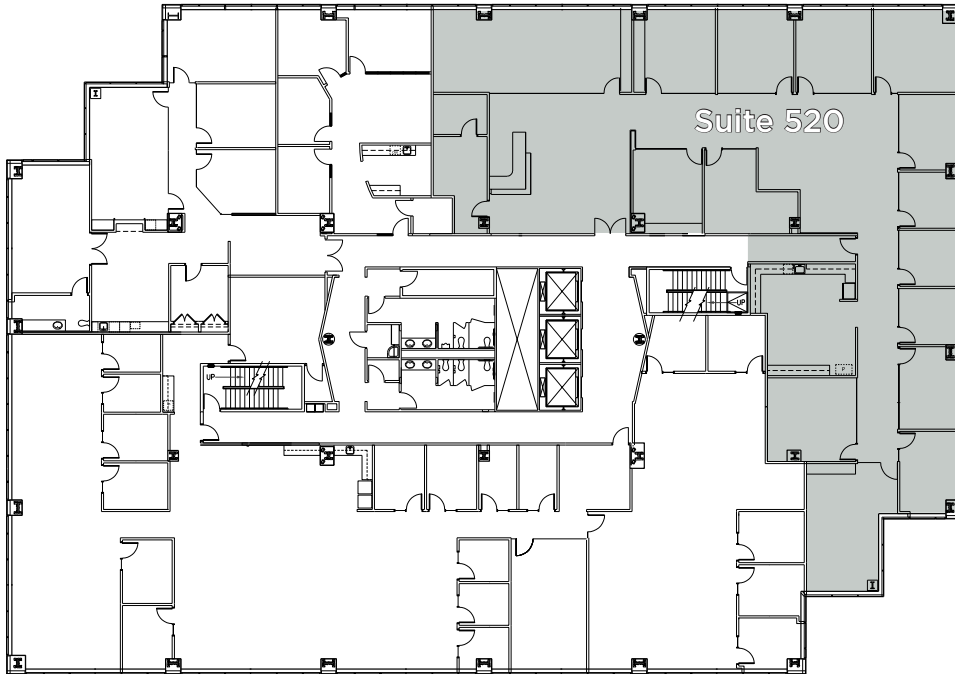
170 South Main Street, Suite 1600
Salt Lake City, Utah 84101
+1 801 322 2000
cushmanwakefield.com



©2022 Cushman & Wakefield. All rights reserved. The information contained in this communication is strictly confidential. This information has been obtained from sources believed to be reliable but has not been verified. No warranty or representation, express or implied, is made as to the condition of the property (or properties) referenced herein or as to the accuracy or completeness of the information contained herein, and same is submitted subject to errors, omissions, change of price, rental or other conditions, withdrawal without notice, and to any special listing conditions imposed by the property owner(s). Any projections, opinions or estimates are subject to uncertainty and do not signify current or future property performance. 1 - Projects\Richmond, Mike\1 - Flyers\Cottonwood Corporate Center_2022BookVersion

BUILDING EIGHT

2755 EAST COTTONWOOD PARKWAY
COTTONWOOD HEIGHTS, UT



Floor **5**

Suite 520
8,143 RSF

LEASING INFORMATION

DANA BAIRD, CCIM
Executive Managing Director
(801) 303 5526
dana.baird@cushwake.com

MIKE RICHMOND
Executive Managing Director
(801) 303 5434
mike.richmond@cushwake.com

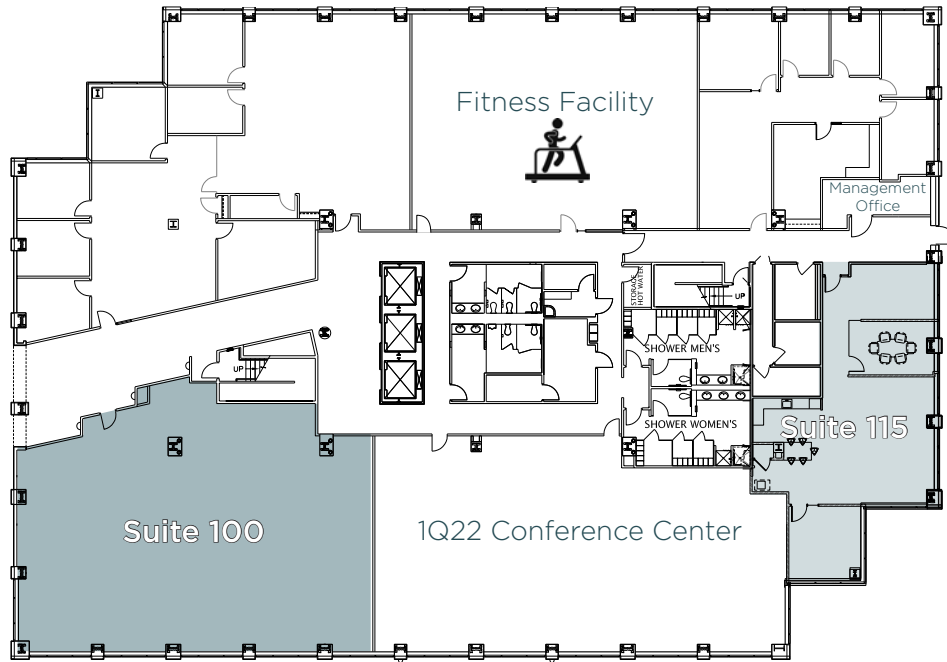


170 South Main Street, Suite 1600
Salt Lake City, Utah 84101
+1 801 322 2000 cushmanwakefield.com

BUILDING NINE

2795 EAST COTTONWOOD PARKWAY
COTTONWOOD HEIGHTS, UT

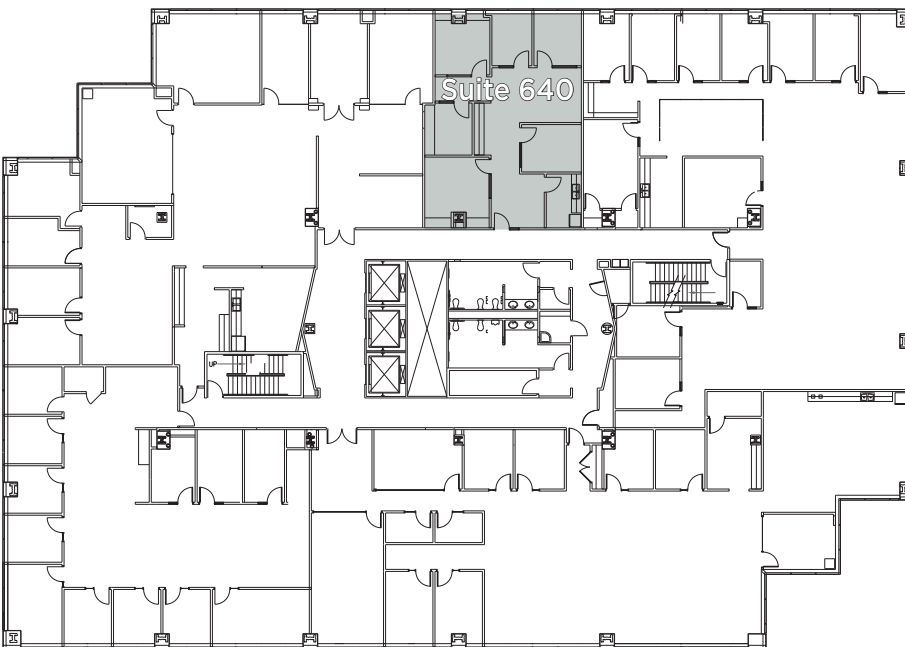
COTTONWOOD CORPORATE CENTER



Floor 1

Suite 100
4,177 RSF

Suite 115
2,001 RSF
Shell condition -
proposed test
fit shown



Floor 6

Suite 640
1,684 RSF

LEASING INFORMATION

DANA BAIRD, CCIM
Executive Managing Director
(801) 303 5526
dana.baird@cushwake.com

MIKE RICHMOND
Executive Managing Director
(801) 303 5434
mike.richmond@cushwake.com

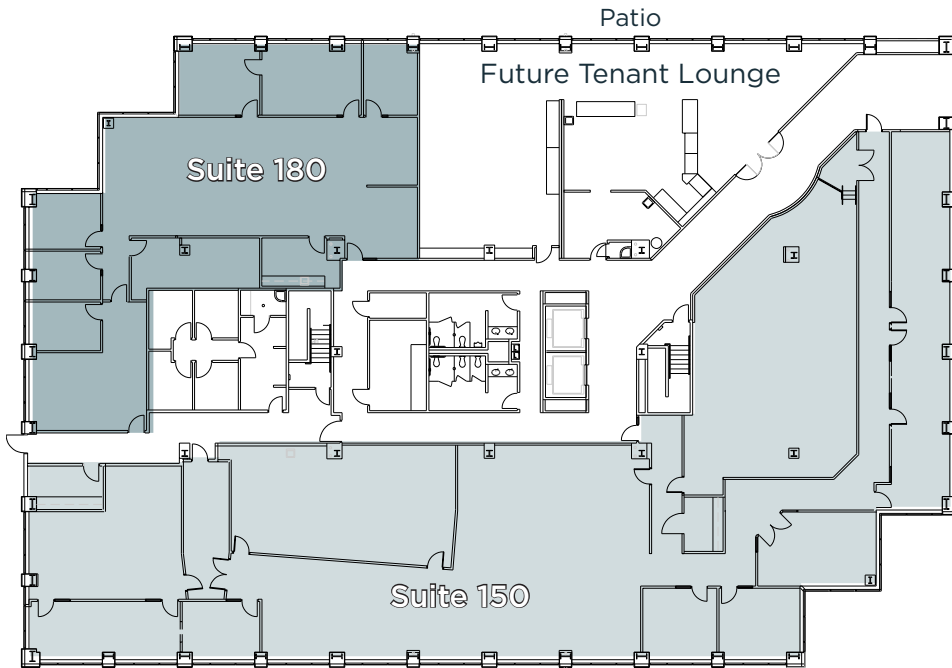


170 South Main Street, Suite 1600
Salt Lake City, Utah 84101
+1 801 322 2000 cushmanwakefield.com



BUILDING TEN

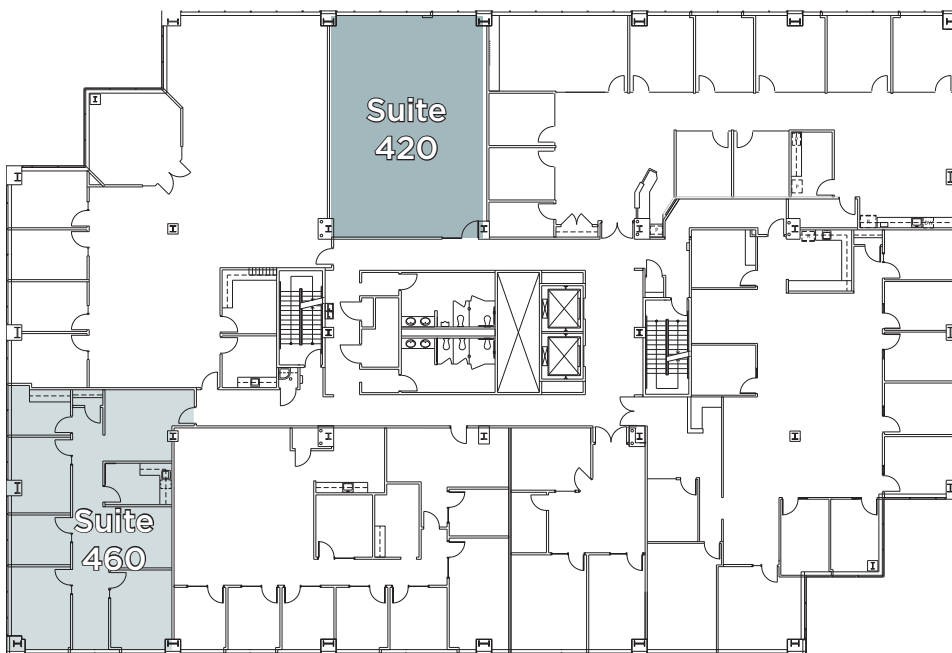
2825 EAST COTTONWOOD PARKWAY
COTTONWOOD HEIGHTS, UT



Floor 1

Suite 150
12,198 RSF

Suite 180
4,533 RSF



Floor 4

Suite 420
1,629 RSF

Unobstructed
Views

Suite 460
2,114 RSF

Available
Aug 1, 2022

LEASING INFORMATION

DANA BAIRD, CCIM
Executive Managing Director
(801) 303 5526
dana.baird@cushwake.com

MIKE RICHMOND
Executive Managing Director
(801) 303 5434
mike.richmond@cushwake.com

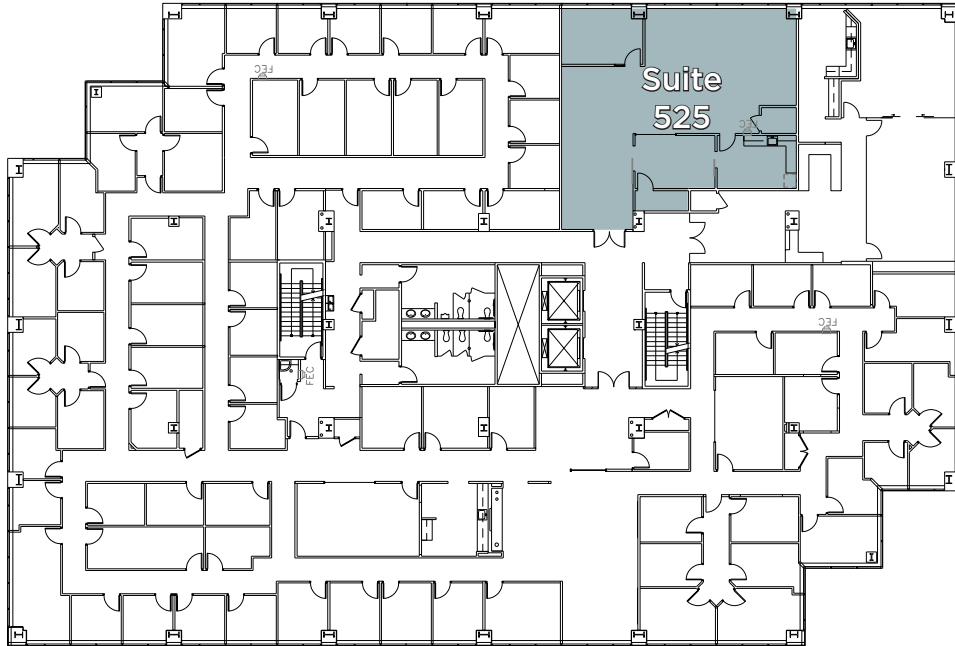


170 South Main Street, Suite 1600
Salt Lake City, Utah 84101
+1 801 322 2000 cushmanwakefield.com



BUILDING TEN

2825 EAST COTTONWOOD PARKWAY
COTTONWOOD HEIGHTS, UT



Floor **5**

Suite 525
2,182 RSF

LEASING INFORMATION

DANA BAIRD, CCIM
Executive Managing Director
(801) 303 5526
dana.baird@cushwake.com

MIKE RICHMOND
Executive Managing Director
(801) 303 5434
mike.richmond@cushwake.com



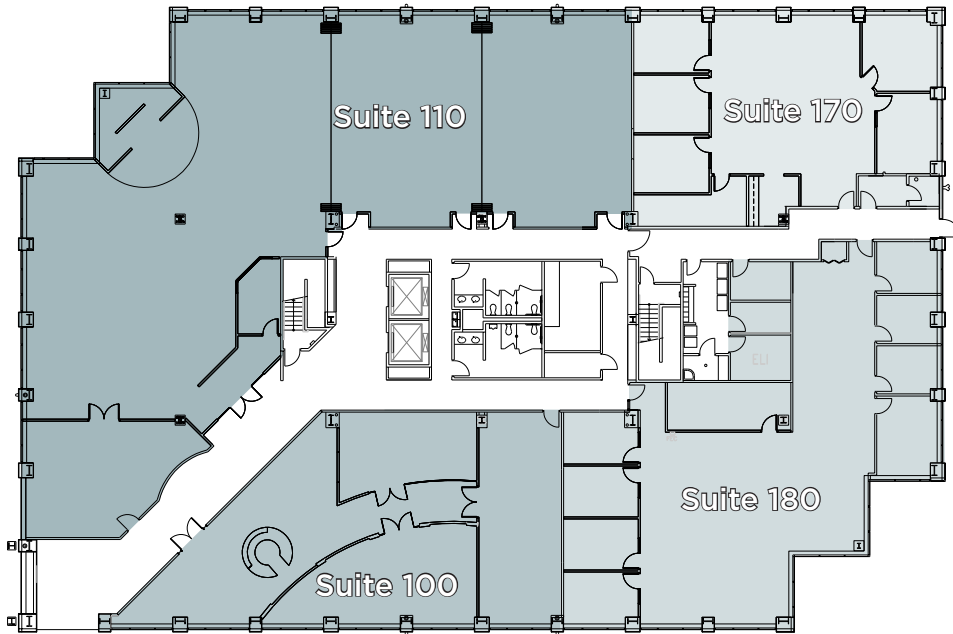
170 South Main Street, Suite 1600
Salt Lake City, Utah 84101
+1 801 322 2000 cushmanwakefield.com



BUILDING ELEVEN

2855 EAST COTTONWOOD PARKWAY
COTTONWOOD HEIGHTS, UT

COTTONWOOD CORPORATE CENTER



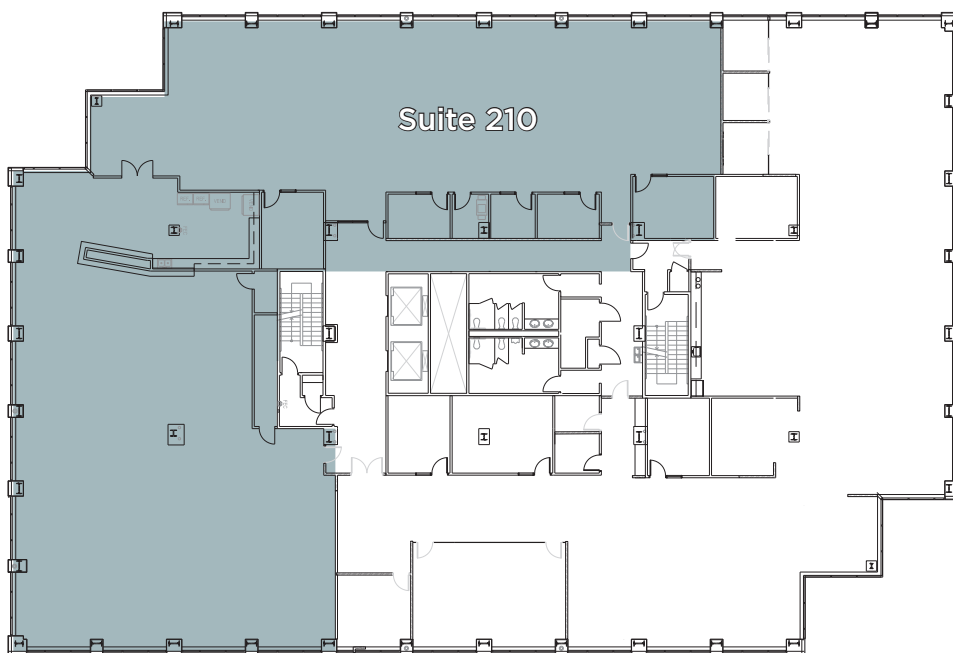
Floor 1

Suite 100
3,600 RSF

Suite 110
8,992 RSF

Suite 170
3,056 RSF

Suite 180
4,895 RSF



Floor 2

Suite 210
12,839 RSF

LEASING INFORMATION

DANA BAIRD, CCIM
Executive Managing Director
(801) 303 5526
dana.baird@cushwake.com

MIKE RICHMOND
Executive Managing Director
(801) 303 5434
mike.richmond@cushwake.com

 **CUSHMAN & WAKEFIELD** **Hines**

170 South Main Street, Suite 1600
Salt Lake City, Utah 84101
+1 801 322 2000 cushmanwakefield.com

