

FOR LEASE IN MAYFAIR/ALBANY PARK 2,500 SF OFFICE/MEDICAL BUILDING WITH PARKING LOT



Single-story office building available for lease with parking lot. Located on Elston Avenue, steps from XSport and Village Discount Outlet. Currently set up as a medical office for pediatrician with 9 exam rooms, 3 half-baths, 1 large waiting room, reception area/front office, conference room, semi-private doctor's office area, and kitchen. Secured parking lot in the rear with 10 parking spaces. Ideal location for doctor, day-care, chiropractor, massage parlor, veterinarian, etc.

Size:	2,566 SF
Rental Rate:	\$23 PSF
Lease Type:	Net
Zoning:	C1-1
Parking:	10 Spaces



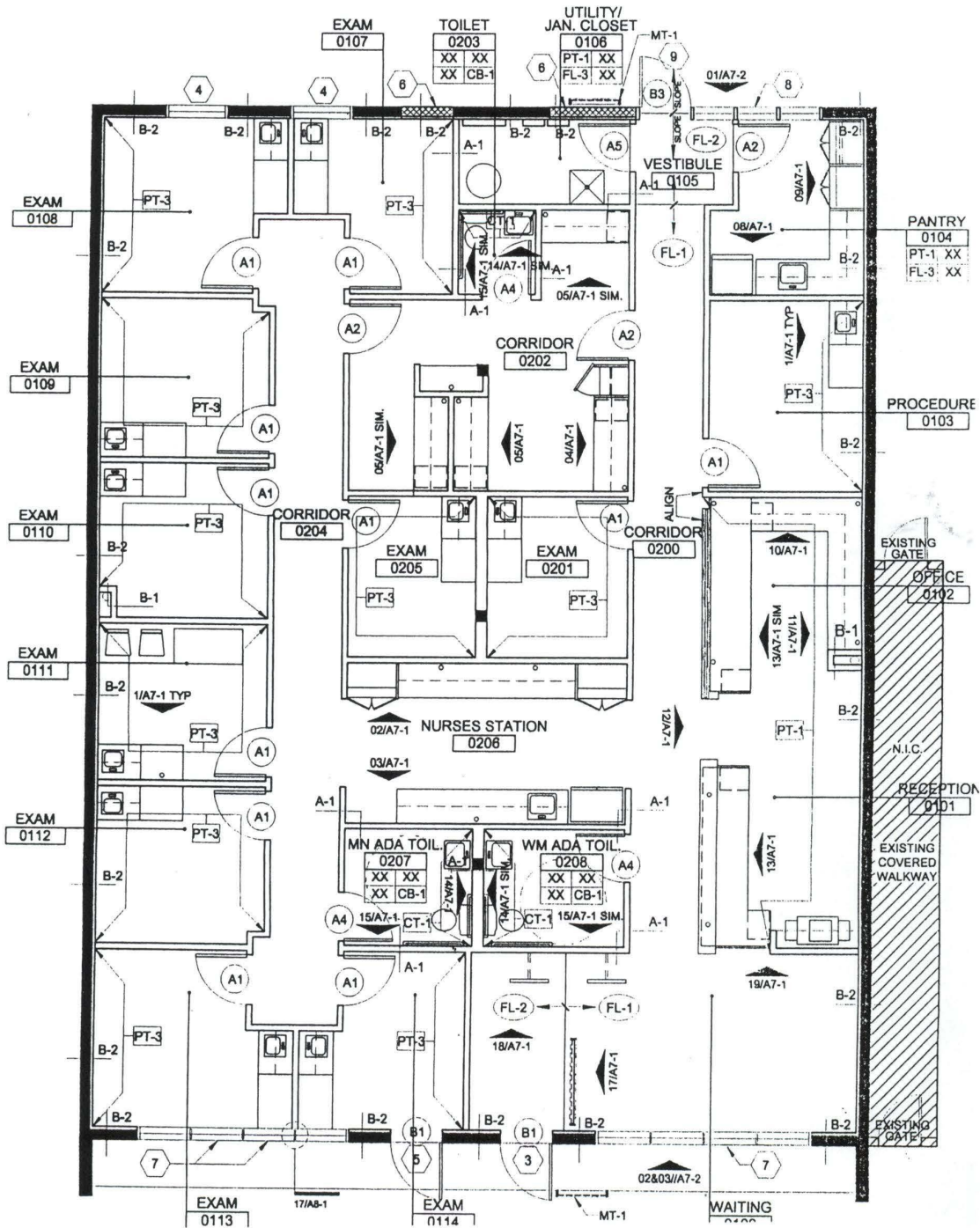
MJ WEINBERGER

847-334-2587

MJ@STRAUSSREALTY.COM

STRAUSS REALTY, LTD.
4220 W. MONTROSE AVE.
CHICAGO, ILLINOIS 60641
PHONE: 773-736-3600

LAYOUT



MJ WEINBERGER

847-334-2587

MJ@STRAUSSREALTY.COM

STRAUSS REALTY, LTD.

4220 W. MONTROSE AVE.

CHICAGO, ILLINOIS 60641

PHONE: 773-736-3600

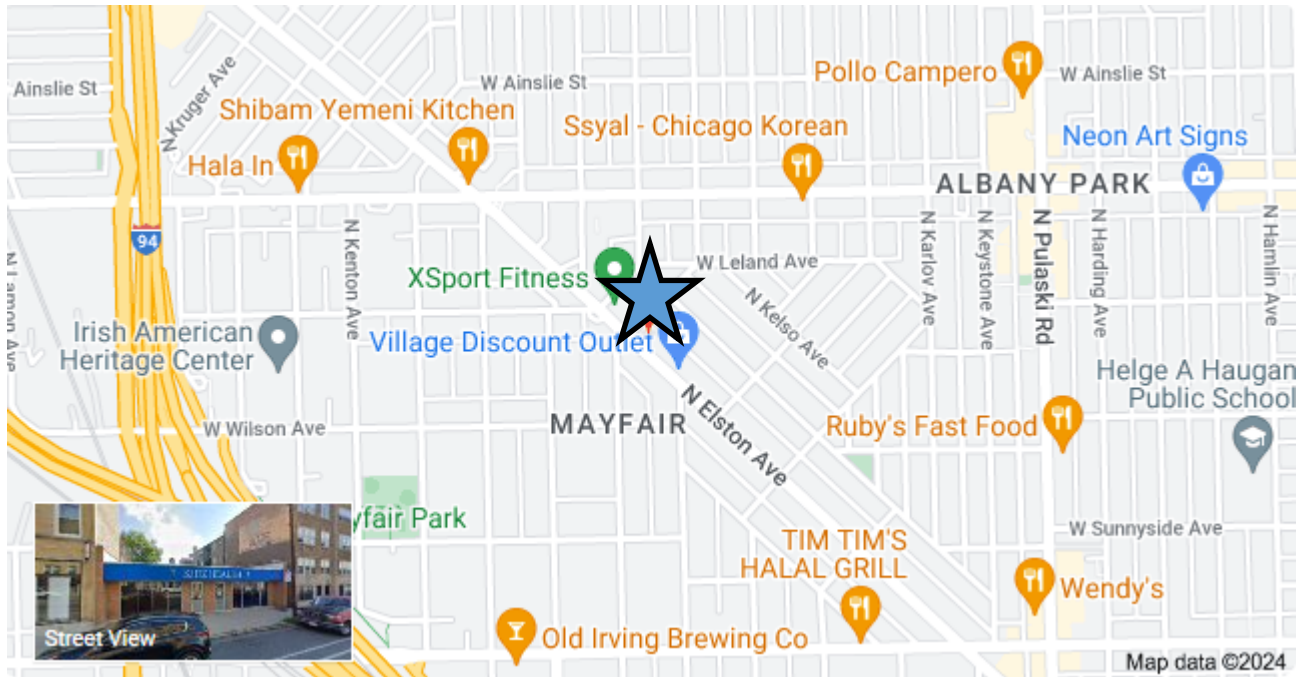
INTERIOR PHOTOS



MJ WEINBERGER
847-334-2587
MJ@STRAUSSREALTY.COM

STRAUSS REALTY, LTD.
4220 W. MONTROSE AVE.
CHICAGO, ILLINOIS 60641
PHONE: 773-736-3600

Map



Demographics

	1 mile	3 Miles
Population	45,196	379,594
Total Households	15,268	131,778
Avg Household Size	2.8	2.7
Median HH Income	\$77,659	\$76,704



MJ WEINBERGER

847-334-2587

MJ@STRAUSSREALTY.COM

STRAUSS REALTY, LTD.

4220 W. MONTROSE AVE.

CHICAGO, ILLINOIS 60641

PHONE: 773-736-3600