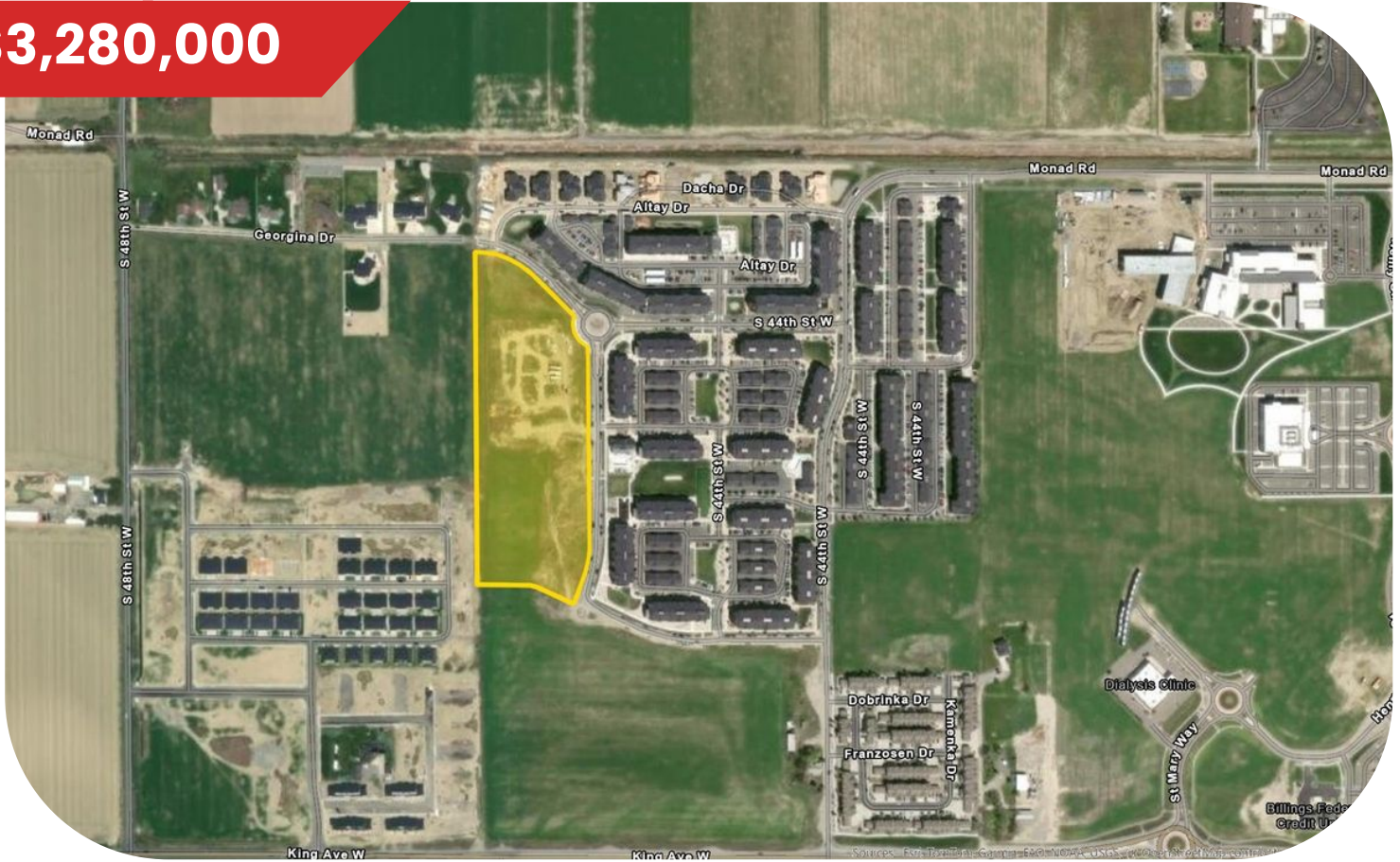


# For Sale

Lots And Land  11.559 acre

**\$3,280,000**



## Parcel 5A1 Stahl Street • Billings, MT 59106



Residential Multifamily approved for 20 units per acre (approx. 230 total units). Zoned PUD-Planned Unit Development, with the underlying zoning classification of RMF-R – Residential Multi-Family Restricted. City water, sewer & Storm sewer lines are located in Stahl Street & Georgina Street along the entire frontage. Electricity, natural gas, telephone & cable are readily available to the site as well. Call agent for details!

All info from 3rd party sources & deemed reliable. Info subject to change & not guaranteed or warranted. Buyer & buyer's agent to verify all info.

CONTACT ME FOR  
MORE DETAILS OR TO  
SCHEDULE A TOUR.



Pat Schindele

406-591-2551 | [patschindele.com](http://patschindele.com)  
[pat@patschindele.com](mailto:pat@patschindele.com)

Each Office Is Independently  
Owned and Operated

**ps**  
PAT SCHINDELE

**kw** YELLOWSTONE  
PROPERTIES  
KELLERWILLIAMS.

