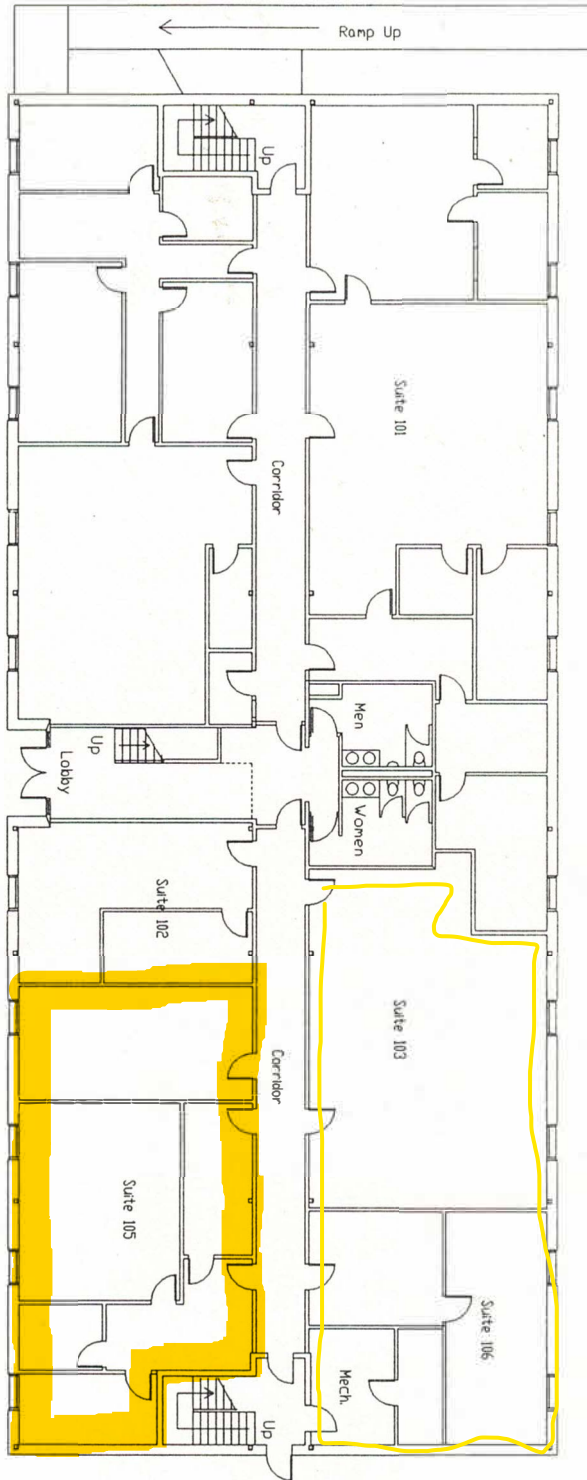


FIRST FLOOR PLAN



A1

PROJECT NO.	DATE
SHEET NO.	DATE
SCALE	DATE
DESIGNED BY	DATE
CHECKED BY	DATE

EXISTING BUILDING AT:  
**792 SOUTH MAIN STREET**  
 GREAT WOODS OFFICE PARK  
 MANSFIELD, MASSACHUSETTS

FIRST FLOOR PLAN

REVISIONS			
DATE	COMMENT	DATE	COMMENT



Walsh/Cochis Associates Inc.  
 Architects & Consultants  
 1100 Beaufort Street  
 Canton, MA 01921  
 617/828-8700