



SALE PRICE:

\$598,000

CONTACT:

Matthew Pollard

Senior Brokerage Associate
+1 803 401 4201
matthew.pollard@colliers.com



Colliers | South Carolina

1301 Gervais Street, Suite 600
Columbia, SC 29201
+1 803 254 2300

FOR SALE

Two-Story Multi-Tenant Office Building in Northeast Columbia

26 Office Park Court | Columbia, SC 29223

Highlights

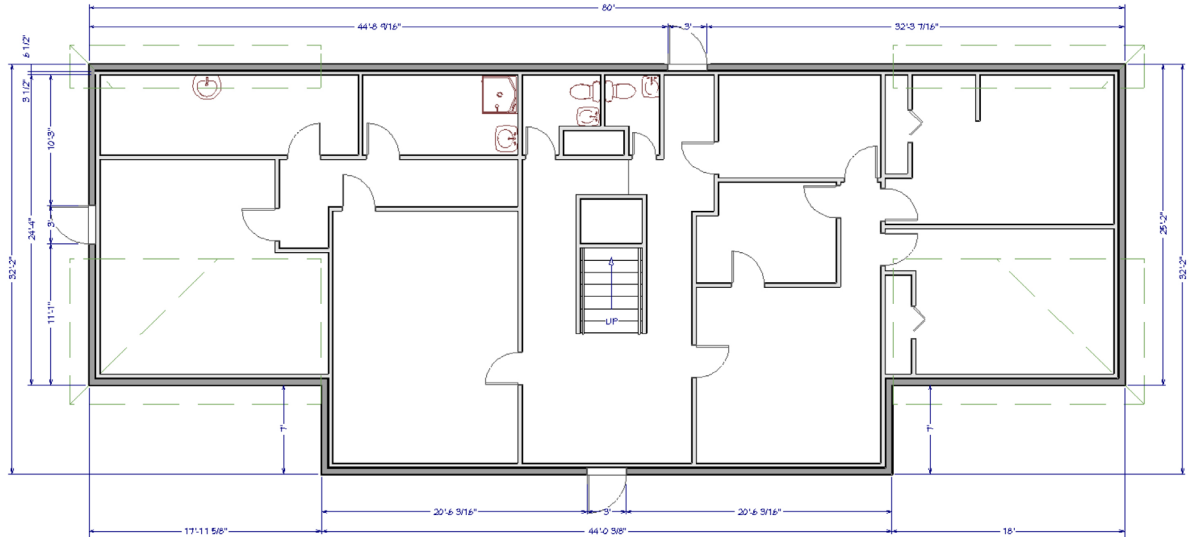
- ±4,280 SF office building situated on ±0.51 acres
- 12 surface parking spaces
- Multiple offices and restrooms on both the first and second floors
- Ideal for single user or as a multi-tenant investment property
- Convenient access to interstates: ±1.7 miles to I-77 and ±2.7 miles to I-20
- Minutes from Clemson Road corridor and Village at Sandhills

26 Office Park is situated just off Two Notch Road, close to the Spring Valley Subdivision in Northeast Columbia. The property is surrounded by a variety of professional offices, including insurance firms, law offices and medical/dental practices. Additionally, it is easily accessible to Interstate 77 and Interstate 20.

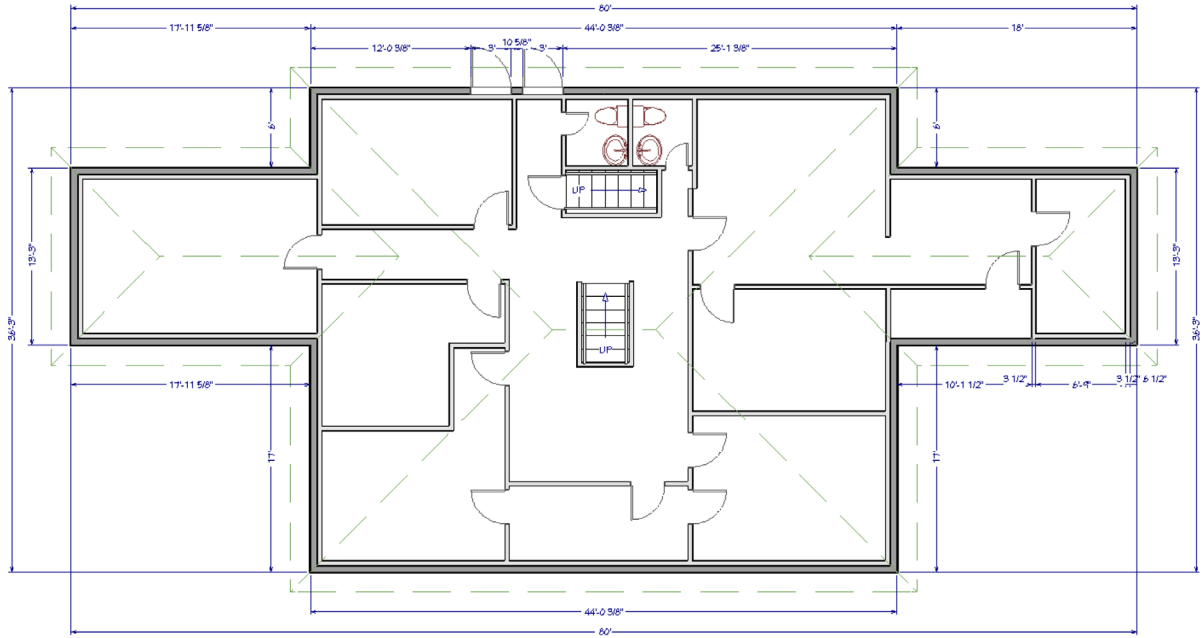
FOR SALE
26 Office Park Ct



FIRST FLOOR



SECOND FLOOR



FOR SALE
26 Office Park Ct



CONTACT:

Matthew Pollard
Senior Brokerage Associate
+1 803 401 4201
matthew.pollard@colliers.com

Demographics 2025 est.	1 mile	3 miles	5 miles
Population	4,649	51,863	123,213
Daytime Population	4,279	50,872	116,514
Households	1,909	22,706	51,282



Colliers | South Carolina
1301 Gervais Street, Ste 600
Columbia, SC 29201
+1 803 254 2300

Copyright © 2026 Colliers International. Information herein has been obtained from sources deemed reliable, however its accuracy cannot be guaranteed. The user is required to conduct their own due diligence and verification.