

**LEGEND**

- PROPERTY LINE
- - - RIGHT-OF-WAY LINE
- - - EASEMENT LINE
- - - BUILDING SETBACK LINE
- 700 --- CONTOUR LINE
- TOP/BOTTOM BANK
- EXISTING SWALE
- AS-BUILT 8" GRAVITY SEWER LINE
- PROPOSED 6" BUILDING SEWER (MB:53 - PG:08)
- PROPOSED 6" SEWER LATERAL (MB:53 - PG:08)
- EXISTING 4" FORCE MAIN
- PROPOSED 4" FORCE MAIN (MB:53 - PG:08)
- EXISTING 1 1/2" FORCE MAIN
- PROPOSED 2" FORCE MAIN (MB:53 - PG:08)
- EXISTING GAS LINE
- PROPOSED GAS LINE (MB:53 - PG:08)
- EXISTING WATER LINE
- PROPOSED WATER LINE (MB:53 - PG:08)
- PROPOSED WATER SERVICE (MB:53 - PG:08)
- UTILITY POLE
- WATER VALVE
- CURB STOP
- FIRE HYDRANT
- CLEANOUT
- GAS VA

\*GRATE  
STONE FILTER ON  
EXISTING INLET GRATES  
INVERTS ARE INACCESSIBLE

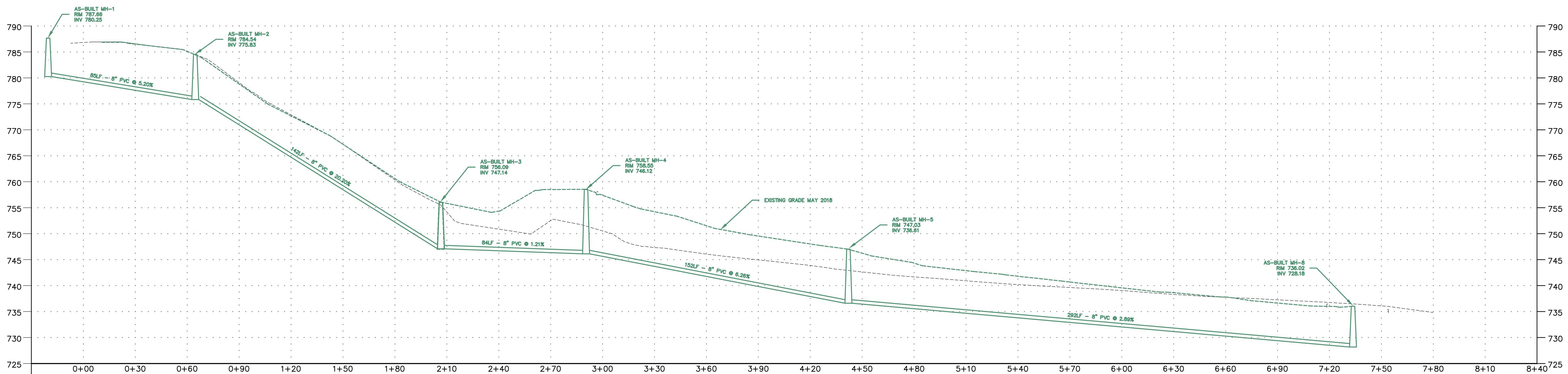
FF: 742.00  
**SEIDERS HILL, INC.**  
**LOT 114**  
UPI #18-24-0114  
RB: - PG: 849  
**LOT 4**  
209,632 S.F.  
4.812 ACRES

REVISION	DATE	DESCRIPTION	BY

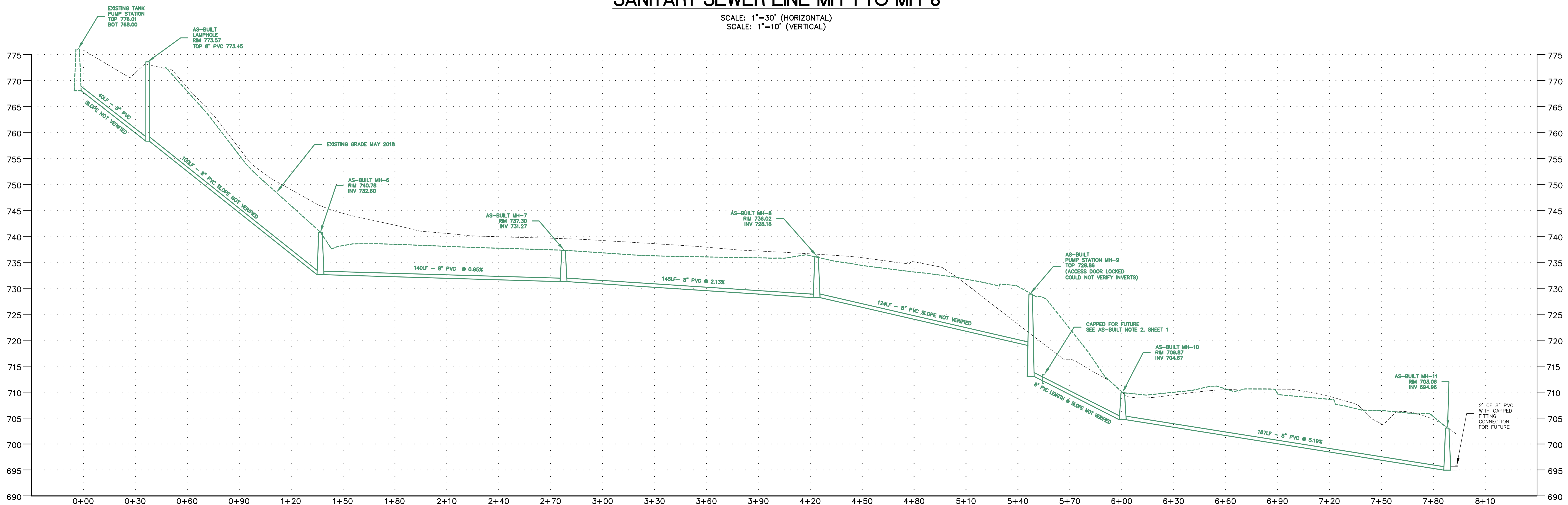
<b>SEIDERS HILL - LOT 114</b>		DATE 05/21/18
NORTH MANHEIM TOWNSHIP		SCALE 1"=40'
SCHUYLKILL COUNTY, PA		DRAWN BY GSR/MTG
<b>WJP Engineers</b> 1406 Laurel Boulevard - Pottsville, PA 17901 Phone (570) 622-4550 Fax (570) 628-4445 www.wjpe.com		APPROVED BY GSR
AS-BUILT TOPOGRAPHIC PLAN		DRAWING NO. 9607-15
		SHEET NO. 1 OF 2





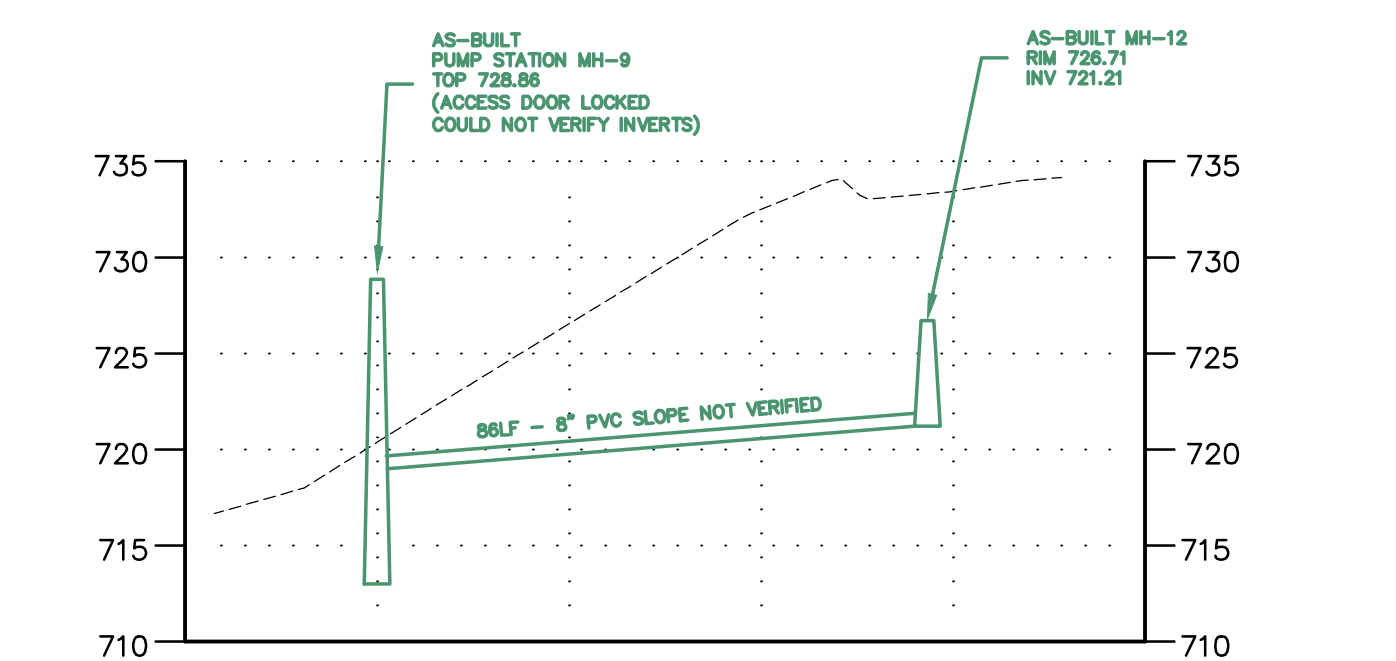
**SANITARY SEWER LINE MH-1 TO MH-8**

SCALE: 1"=30' (HORIZONTAL)  
SCALE: 1"=10' (VERTICAL)



**SANITARY SEWER LINE FROM EXISTING PUMP STATION TO MH-11**

SCALE: 1"=30' (HORIZONTAL)  
SCALE: 1"=10' (VERTICAL)



**SANITARY SEWER LINE FROM MH9 TO MH12**

SCALE: 1"=30' (HORIZONTAL)  
SCALE: 1"=10' (VERTICAL)



1	05/31/16	REVISED PER SDE REVIEW	MTG
REVISION	DATE	DESCRIPTION	BY
SEIDERS HILL - LOT 114			DATE: 04/29/16
NORHT MANHEIM TOWNSHIP			SCALE: 1"=40'
SCHUYLKILL COUNTY, PA			DRAWN BY: MTG
			APPROVED BY: GSR
1406 Laurel Boulevard - Pottsville, PA 17901 Phone: (570) 622-4550 Fax: (570) 628-4445			DRAWING NO.: 9607-15
AS-BUILT SANITARY SEWER PROFILE			SHEET NO.: 2 OF 2