



FOR LEASE

743 W. JOHNSON ST.
RALEIGH, NC 27616

**MULTIPLE
EXECUTIVE
SUITES
AVAILABLE!**

LISTING BROKER:

JIM HARRIS, CCIM
919.782.5552 (O) | 919.649.6114 (M)
JHARRIS@TRADEMARKPROPERTIES.COM



1001 WADE AVENUE SUITE 300, RALEIGH, NC 27605
TRADEMARKPROPERTIES.COM | 919-782-5552

743 W. JOHNSON ST.
RALEIGH, NC 27616



PROPERTY HIGHLIGHTS



- » Two second floor suites available immediately for office, personal services, or creative businesses.
- » Major developments coming to the neighborhood including a 20+ story mixed use building at the Creamery on Glenwood.
- » Strategically located at the corner of West Johnson St. and St. Mary's St with high foot traffic, ensuring excellent exposure for your business.
- » 8,400 VPD on St. Mary's Street just south of W. Johnson Street.
- » Vibrant neighborhood with an abundance of locally-owned restaurants & shops.

LEASE RATE:
SUITES B3, B4 & B5:
\$2,800/MONTH

LEASE RATE:
SUITE C: \$1,575/MONTH

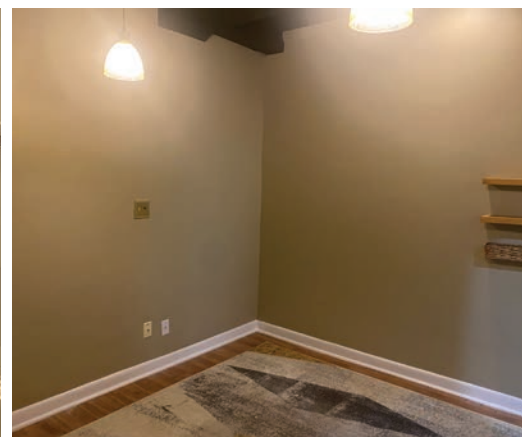
JIM HARRIS, CCIM
919.782.5552 (O) | 919.649.6114 (M)
JHARRIS@TRADEMARKPROPERTIES.COM

1001 WADE AVENUE SUITE 300
RALEIGH, NC 27605
TRADEMARKPROPERTIES.COM | 919-782-5552

743 W. JOHNSON ST.
RALEIGH, NC 27616



SUITE B3, B4, & B5



JIM HARRIS, CCIM
919.782.5552 (O) | 919.649.6114 (M)
JHARRIS@TRADEMARKPROPERTIES.COM

1001 WADE AVENUE SUITE 300
RALEIGH, NC 27605
TRADEMARKPROPERTIES.COM | 919-782-5552

743 W. JOHNSON ST.
RALEIGH, NC 27616



SUITE C

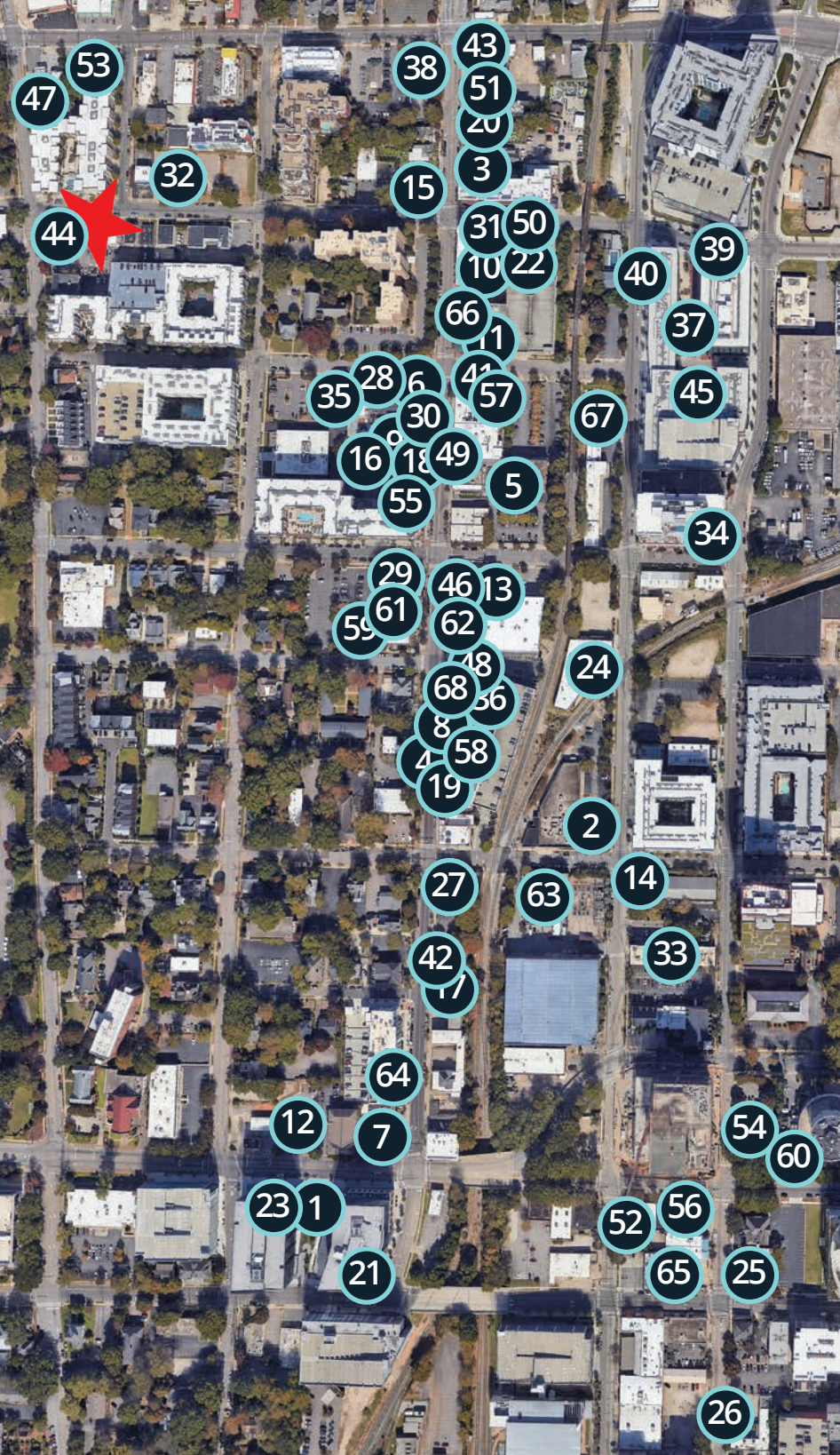


JIM HARRIS, CCIM
919.782.5552 (O) | 919.649.6114 (M)
JHARRIS@TRADEMARKPROPERTIES.COM

1001 WADE AVENUE SUITE 300
RALEIGH, NC 27605
TRADEMARKPROPERTIES.COM | 919-782-5552

GLENWOOD SOUTH DINING

743 W. JOHNSON ST.
RALEIGH, NC 27616



- | | |
|------------------------------------|--|
| 1. 321 Coffee | 37. Madre |
| 2. 42nd Street Oyster Bar | 38. Mellow Mushroom |
| 3. Alchemy | 39. Midwood Smokehouse |
| 4. Anise Pho | 40. MILKLAB |
| 5. The Ark Royal | 41. Milk Bar |
| 6. Armadillo Grill | 42. Mojito Lounge |
| 7. The Avenue | 43. MoJoe's Burger Joint |
| 8. Bigfoot Taphouse | 44. My Way Tavern |
| 9. Botanical Lounge | 45. New Anthem Beer Project |
| 10. Burger Village | 46. North Street Beer Station |
| 11. Carolina Ale House | 47. Peace & Saint |
| 12. Char-Grill | 48. Pearl & Peril |
| 13. Clockwork | 49. Pine State Public House |
| 14. Clouds Brewing | 50. PLUS Dueling Piano Bar |
| 15. Cornerstone Tavern | 51. Raleigh Beer Garden |
| 16. The Cortez | 52. The Roast Grill- Hot Weiners |
| 17. The Cupcake Shoppe Bakery | 53. San Marcos Wings & Grill |
| 18. Cuya | 54. Second Empire |
| 19. DeMo's Pizzeria & Deli | 55. Split |
| 20. Dogwood Bar & Eatery | 56. State of Beer Bottle + Sandwich Shop |
| 21. Dram & Draught | 57. Sullivan's Steakhouse |
| 22. Empress Room | 58. Sushi Blues Cafe |
| 23. First Watch | 59. Sushi O Bistro & Sushi Bar |
| 24. Five Star | 60. Taverna Agora |
| 25. Flying Saucer Draught Emporium | 61. Thaiphon Bistro |
| 26. Flex Nightclub | 62. Tin Roof |
| 27. Halcyon | 63. Tobacco Road Sports Cafe & Brewery |
| 28. Havana Deluxe | 64. The Willard Rooftop Lounge |
| 29. Hibernian Irish Pub | 65. Ugly Monkey Party Bar |
| 30. Highgarden Rooftop | 66. Vidrio |
| 31. Industry | 67. Whiskey Rose |
| 32. Johnson Street Yacht Club | 68. Wonderland Tapas & Cocktails |
| 33. Killjoy | |
| 34. Little City Brewing | |
| 35. Lucky B's | |
| 36. La Santa Modern Mexican | |

JIM HARRIS, CCIM
919.782.5552 (O) | 919.649.6114 (M)
JHARRIS@TRADEMARKPROPERTIES.COM

1001 WADE AVENUE SUITE 300
RALEIGH, NC 27605
TRADEMARKPROPERTIES.COM | 919-782-5552

LISTING BROKER:

JIM HARRIS, CCIM

919.782.5552 DIRECT | 919.649.6114 MOBILE
JHARRIS@TRADEMARKPROPERTIES.COM



TRADEMARK
PROPERTIES

THIS IS OUR TRADEMARK

THE INFORMATION CONTAINED HEREIN WAS OBTAINED FROM SOURCES BELIEVED RELIABLE; HOWEVER, TRADEMARK PROPERTIES MAKES NO GUARANTEES, WARRANTIES, OR REPRESENTATIONS AS TO THE COMPLETENESS OR ACCURACY THEREOF. THE PRESENTATION OF THIS PROPERTY IS SUBMITTED SUBJECT TO ERRORS, OMISSIONS, CHANGES OF PRICE OR CONDITIONS PRIOR TO SALE OR LEASE, OR WITHDRAWAL WITHOUT NOTICE.