



760-780 W New Haven Ave & 1933 Palm Blvd

Melbourne, FL 32901

Land, Office, Retail

\$975,000

Offered For Sale

4,673 SF

Total Building SF

35,301 VPD

Traffic Count

0.65 Acres

Total Acreage

PROPERTY HIGHLIGHTS

High Visibility, Ample Parking and Excellent Traffic

Total Acreage is 0.65 Acres | Total Building SF is 4,673

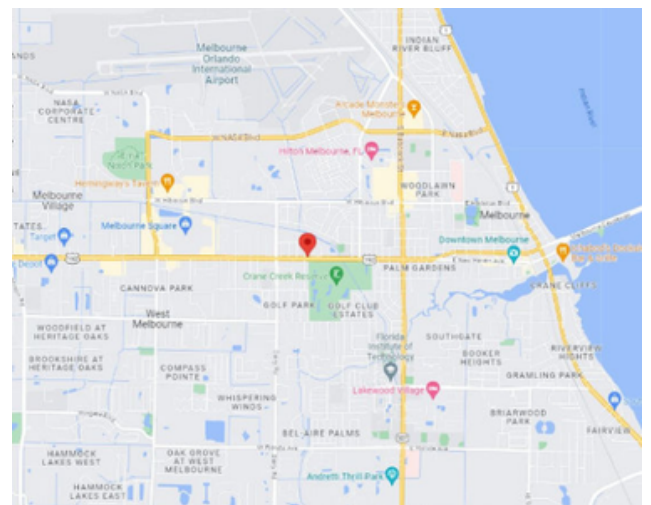
All 3 Properties Zoned C2: Office, Retail, Financial,
Restaurant & More

Two Buildings and One Vacant Lot

Located Along West New Haven (US-192), a Main
Melbourne Artery

Traffic Count: 35,301 Vehicles Daily

MAP



Shey Anderson | Commercial Sales & Leasing Associate | JM Real Estate, Inc.
Office: 321.242.2882 x216 | Cell: 321.749.8921 | Shey@JMRealEstate.com

JM Real Estate, Inc. | 6022 Farcenda Place, Melbourne, FL 32940 | JMRealEstate.com

Strategic Commercial Real Estate Solutions | Leasing • Sales • Management • Investments

Information contained herein has been obtained from sources deemed reliable but is not guaranteed. Licensed Real Estate Broker.



Property overview:

780 W. New Haven .23 acres

2,373 sqft

760 W New Haven .11 acres

2,300 sqft

Lot 1933 Palm Blvd .31 acres



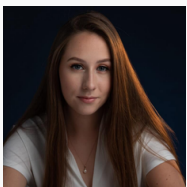
Property overview:
Lot 1933 Palm Blvd .31 acres



DEMOGRAPHICS

	1 Mile	3 Mile	5 Mile
2023 Population	8,323	59,375	147,949
2028 Pop Projection	8,586	61,791	153,460
Growth 2023-2028	0.6%	0.8%	0.7%
Median Age	48.1	43.9	45.7
Bachelor's or Higher	23%	27%	28%
Avg Household Income	\$60,398	\$66,404	\$74,284

CONTACT INFORMATION



Shey Anderson

Commercial Sales & Leasing Associate

Office: 321.242.2882 x216 | Cell: 321.749.8921

Shey@JMRealEstate.com

JMRealEstate.com



**SCAN FOR FULL
PROPERTY DETAILS**