

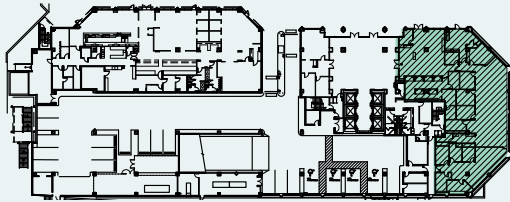


# ESPLANADE

2575 EAST CAMELBACK ROAD

## Suite 100 | ±8,316 SF

### KEY MAP



**1** Reception/Teller Area

**1** ATM/Night Drop

**9** Offices

**2** Huddle Rooms

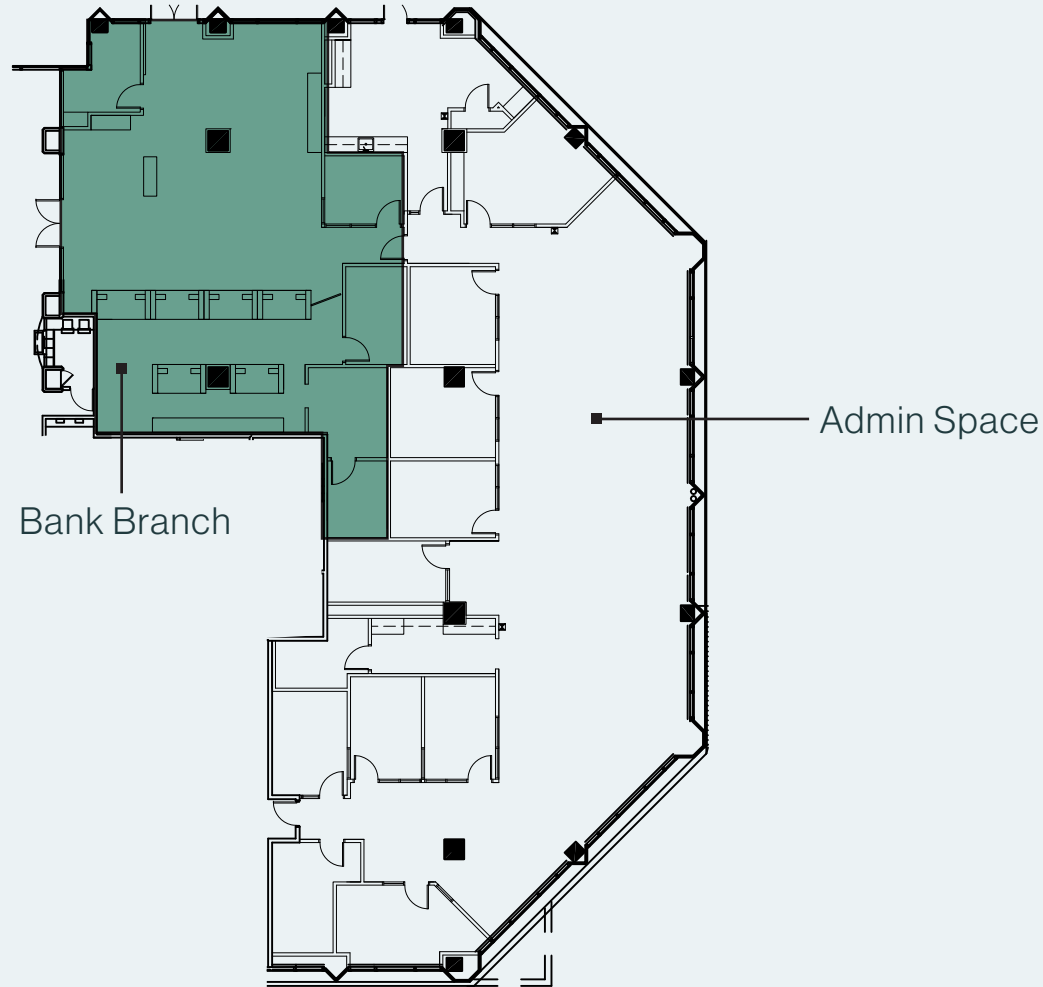
**1** Conference Room

**2** IT/Storage Rooms

**1** Copy/Vault Area

**1** Break Room

Potential for **24** Workstations



Not to scale.  
All SF is approximate

**COREY HAWLEY**

602.735.1742

corey.hawley@cbre.com



**BRYAN TAUTE**

602.373.7163

bryan.taute@jll.com



**WILL MASK**

563.506.2959

will.mask@jll.com



© 2025 CBRE, Inc. All rights reserved. This information has been obtained from sources believed reliable, but has not been verified for accuracy or completeness. You should conduct a careful, independent investigation of the property and verify all information. Any reliance on this information is solely at your own risk. CBRE and the CBRE logo are service marks of CBRE, Inc. All other marks displayed on this document are the property of their respective owners, and the use of such logos does not imply any affiliation with or endorsement of CBRE. Photos herein are the property of their respective owners. Use of these images without the express written consent of the owner is prohibited.