

205 W 6TH STREET

Vancouver, WA 98660

FOR LEASE



RETAIL/OFFICE SPACE FOR LEASE

DETAILS

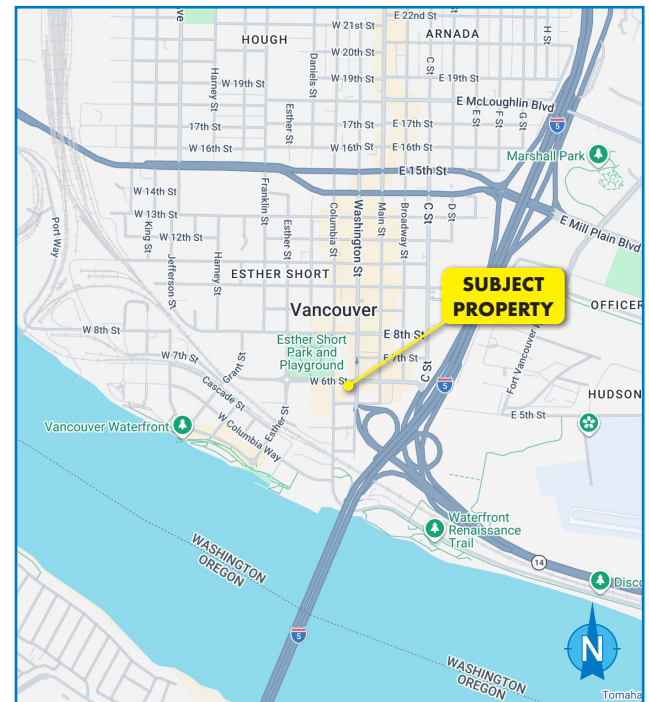
- Space size: ± 2,076 SF
- Lease rate: \$3,600/month, NNN

HIGHLIGHTS

- Prime downtown Vancouver location with strong visibility and easy access
- Efficient ± 2,076 SF layout ideal for office, service retail, studio, or showroom use
- Move-in ready space with modern finishes and strong natural light
- Walkable to restaurants, services, and civic anchors in the downtown core
- Convenient access to I-5, I-105, and the Vancouver waterfront

* Note: Non permitted uses are:

Sale of snacks or ready-to-eat food items, packaged dairy products, pastry and bread products, beer or wine for off premise consumption, tobacco products, packaged or bottled soft drinks, or magazines.



For more information or a property tour, please contact:

MATT LYMAN

503.225.8454 (o) | 503.507.4880 (c)

MattL@norris-stevens.com



Information contained herein has been obtained from others and considered to be reliable; however, a prospective purchaser or lessee is expected to verify all information to their own satisfaction.

Norris & Stevens

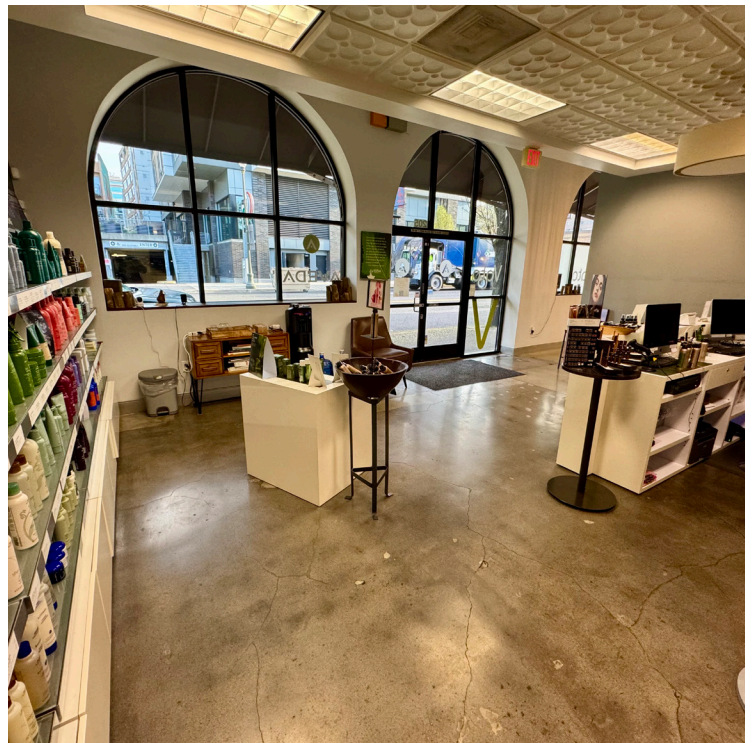
12503 SE Mill Plain Boulevard • Suite 260
Vancouver, Washington 98684
503.223.3171 • norris-stevens.com

205 W 6TH STREET

Vancouver, WA 98660

FOR LEASE

PROPERTY PHOTOS



For more information or a property tour, please contact:

MATT LYMAN

503.225.8454 (o) | 503.507.4880 (c)

MattL@norris-stevens.com



Information contained herein has been obtained from others and considered to be reliable; however, a prospective purchaser or lessee is expected to verify all information to their own satisfaction.

Norris & Stevens

12503 SE Mill Plain Boulevard • Suite 260
Vancouver, Washington 98684
503.223.3171 • norris-stevens.com

205 W 6TH STREET

Vancouver, WA 98660

FOR LEASE

PROPERTY PHOTOS



For more information or a property tour, please contact:

MATT LYMAN

503.225.8454 (o) | 503.507.4880 (c)

MattL@norris-stevens.com



Information contained herein has been obtained from others and considered to be reliable; however, a prospective purchaser or lessee is expected to verify all information to their own satisfaction.

Norris & Stevens

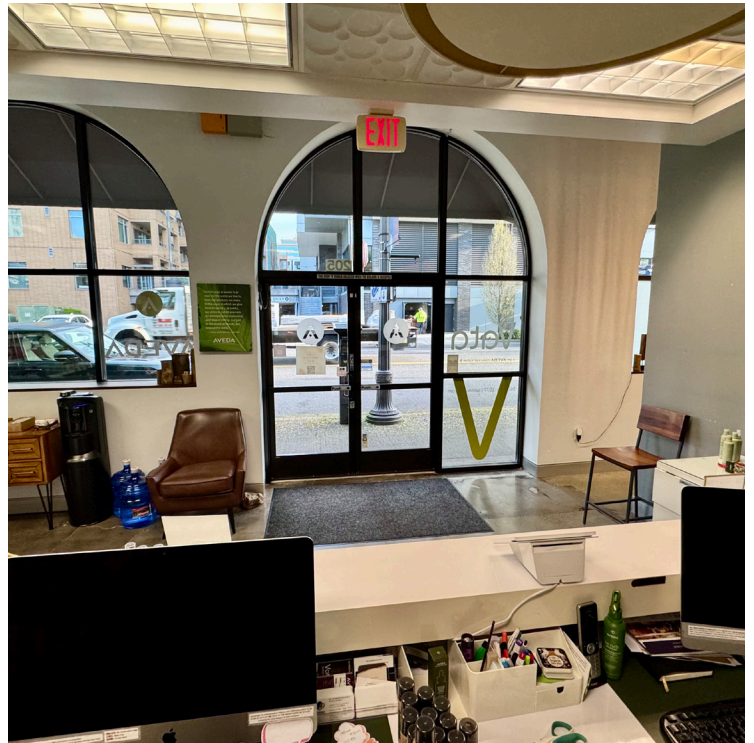
12503 SE Mill Plain Boulevard • Suite 260
Vancouver, Washington 98684
503.223.3171 • norris-stevens.com

205 W 6TH STREET

Vancouver, WA 98660

FOR LEASE

PROPERTY PHOTOS



For more information or a property tour, please contact:

MATT LYMAN

503.225.8454 (o) | 503.507.4880 (c)

MattL@norris-stevens.com



Information contained herein has been obtained from others and considered to be reliable; however, a prospective purchaser or lessee is expected to verify all information to their own satisfaction.

Norris & Stevens

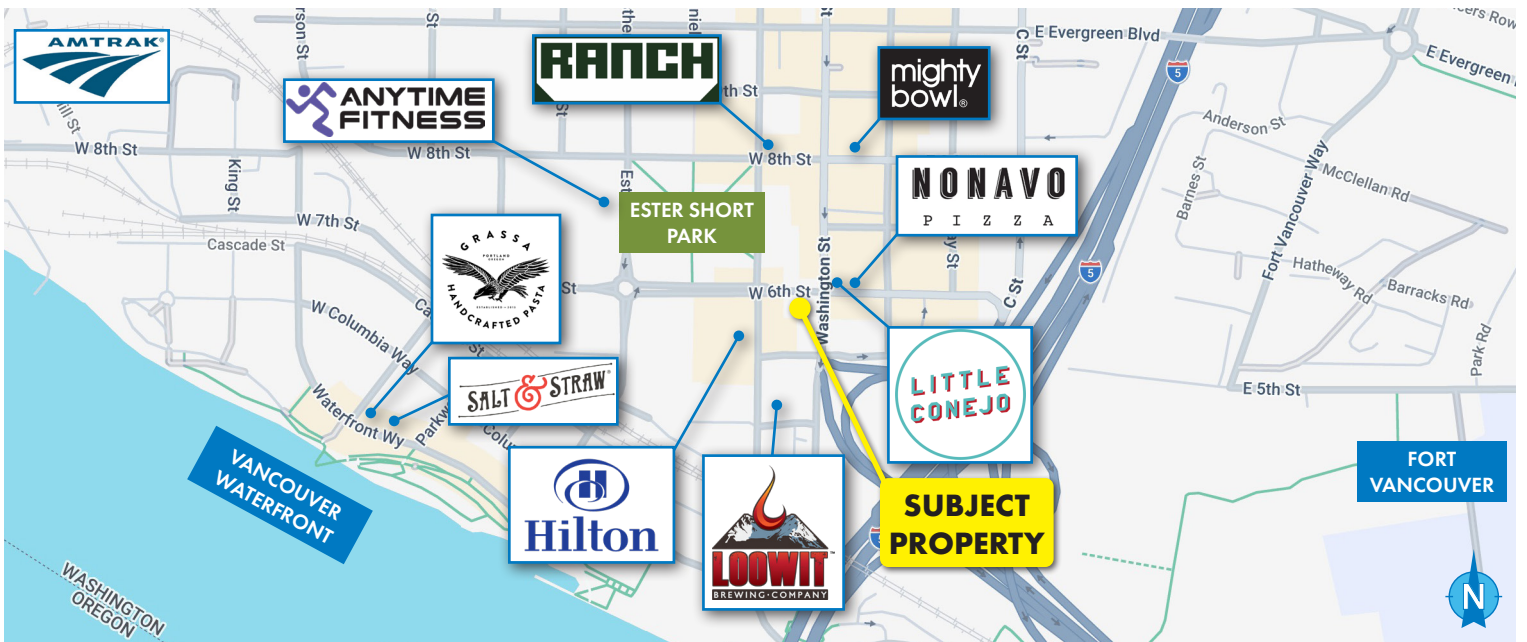
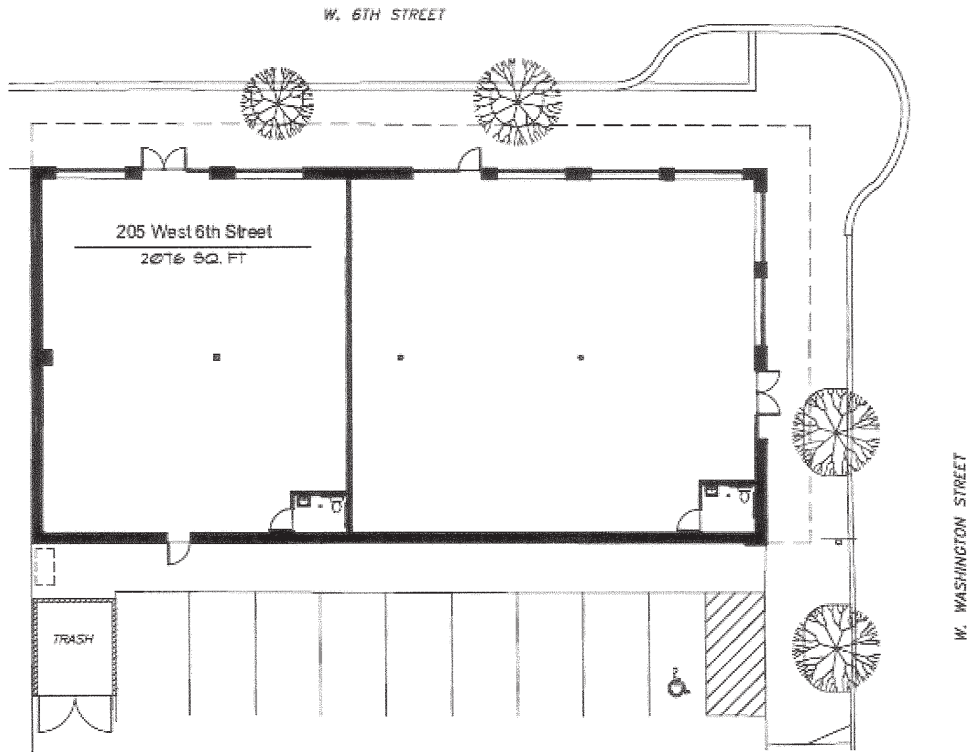
12503 SE Mill Plain Boulevard • Suite 260
Vancouver, Washington 98684
503.223.3171 • norris-stevens.com

205 W 6TH STREET

Vancouver, WA 98660

FOR LEASE

SITE MAP



For more information or a property tour, please contact:

MATT LYMAN

503.225.8454 (o) | 503.507.4880 (c)

MattL@norris-stevens.com



Information contained herein has been obtained from others and considered to be reliable; however, a prospective purchaser or lessee is expected to verify all information to their own satisfaction.

Norris & Stevens

12503 SE Mill Plain Boulevard • Suite 260
Vancouver, Washington 98684
503.223.3171 • norris-stevens.com