

## Poplar House Floor Plans

Poplar House is a prominent semi-detached property that provides modern and affordable office space in Wilmslow.

The building consists of 2,050 sq ft across three floors with a break out room, kitchen area and basement storage space on-site.

The building currently holds D1 planning use and is finished to a high specification.

Car parking spaces are available on-site in a secure, barrier controlled car park.

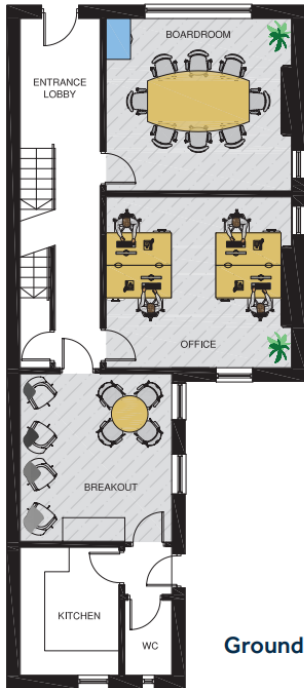
Wilmslow town centre has much to offer in terms of both shopping and leisure facilities, creating an ideal location for staff.

For more information on this property:

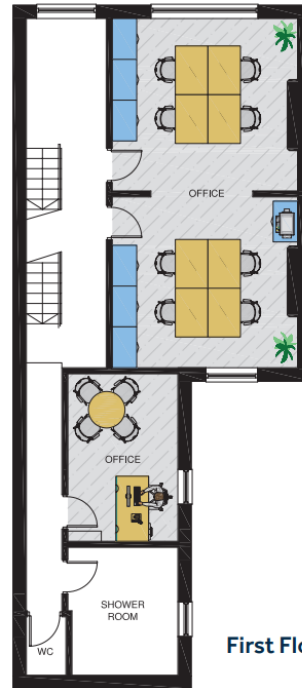
📞 **01625 588200**

🌐 [www.orbit-developments.co.uk](http://www.orbit-developments.co.uk)

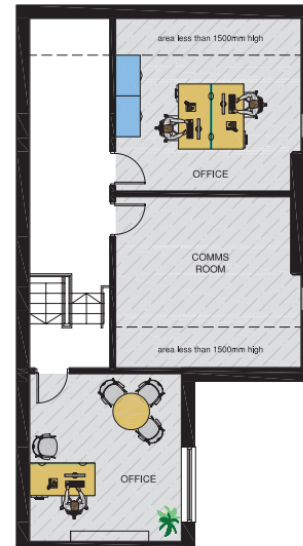
**DISCLAIMER:** These Particulars are believed to be correct at time of going to Press, but the Developer reserves the right to change the scheme in the future. However, the Vendors / Lessors and Agents of this property give notice that : (1) These Particulars are intended as a general outline only, for the guidance of prospective purchasers or tenants, and do not constitute the whole or any part of an offer or contract. (2) They cannot guarantee the accuracy of any description, dimension or other details contained in these Particulars and prospective purchasers or tenants should not rely on them as statements of fact or representation, but must satisfy themselves as to the accuracy of such details. (3) No employee of the Agents has any authority to make or give any representation or warranty, or enter into any contract whatsoever in relation to the property.



Ground Floor



First Floor



Second Floor