

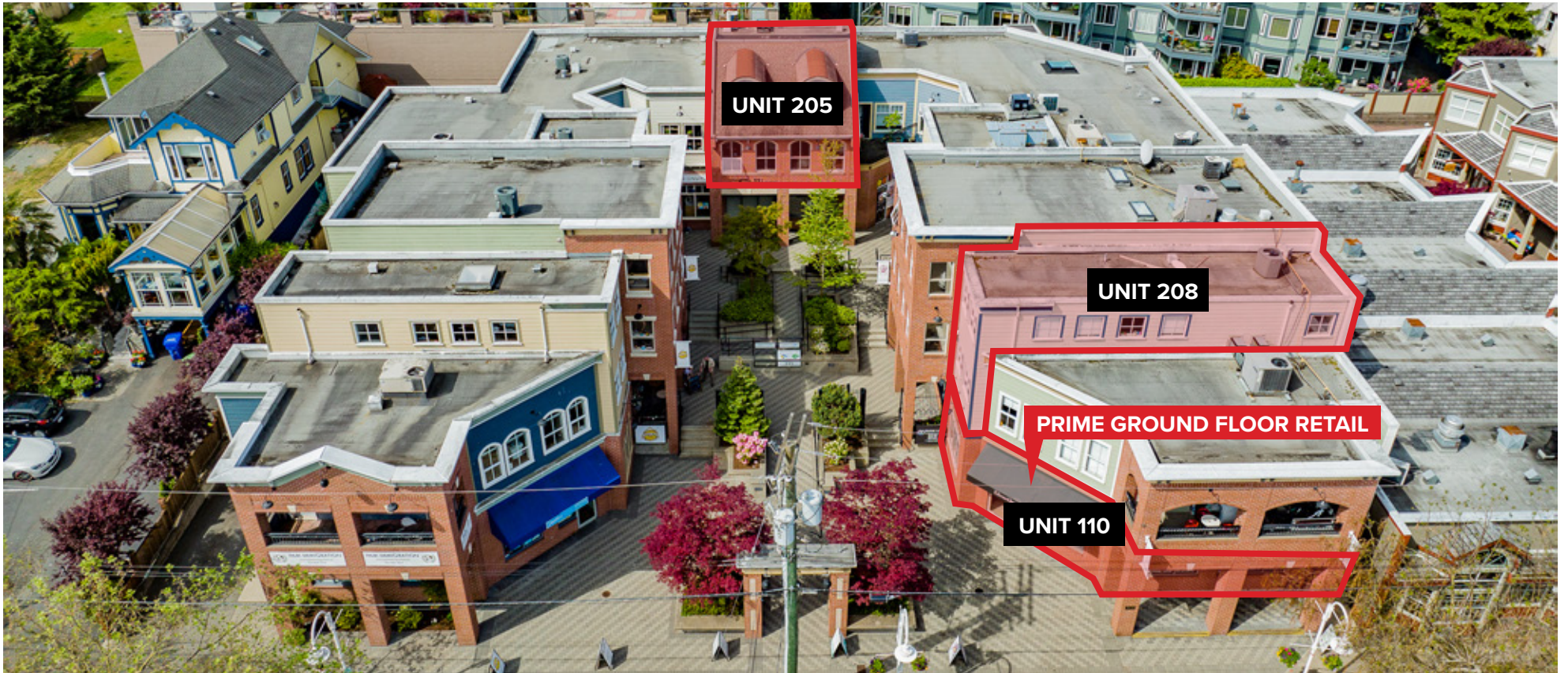
**UNITS AT 335 WESLEY STREET, NANAIMO**  
OFFICE AND RETAIL UNITS AT WESLEY SQUARE

**FOR  
LEASE**



**WILLIAM | WRIGHT**

**SANTANNA PORTMAN**  
santanna.portman@williamwright.ca  
250.586.1226





## OFFICES AND RETAIL AT WESLEY SQUARE

Wesley Square is situated on the premier street of Nanaimo's well-known "Old City Quarter". Offices and retail units are situated around a central courtyard in a unique building designed with old city charm and architectural detail. Wesley Square is conveniently located among alluring shops and many of the city's finest restaurants. Boasting a well treed, beautifully landscaped courtyard, and secured underground parkade, the ambiance provides for a pleasant and secure working and shopping experience.

Wesley Square features modern heating and air conditioning and many offices have opening windows for extra comfort. Wesley Square is very well connected as it's a short five minute walk to the Seaplane Terminal and City Hall just ½ a block away.



## UNIT 110

- + 2 private offices
- + reception
- + storage
- + washroom

### SIZE

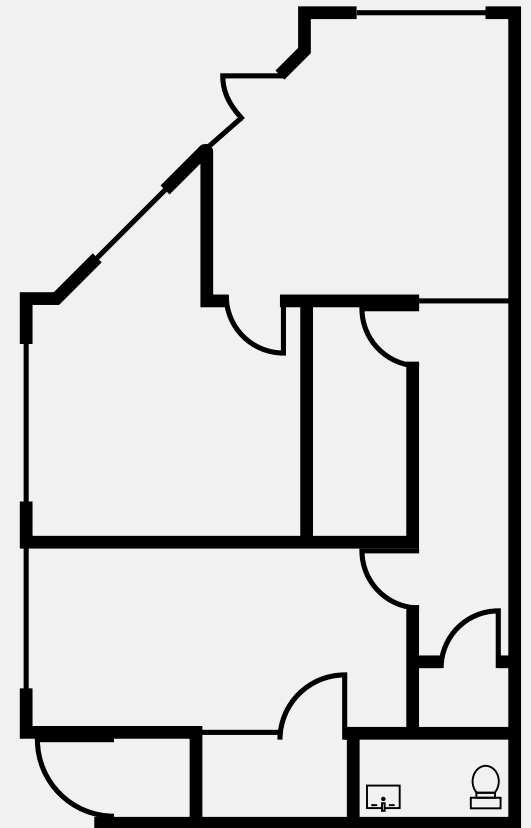
+/- 981 SQFT

### BASIC RENT

\$22.00/FT

### ADDITIONAL RENT

\$11.56/FT (Est.)





## UNIT 205

- + high ceiling height
- + 2 floor unit
- + 2 offices + boardroom

### SIZE

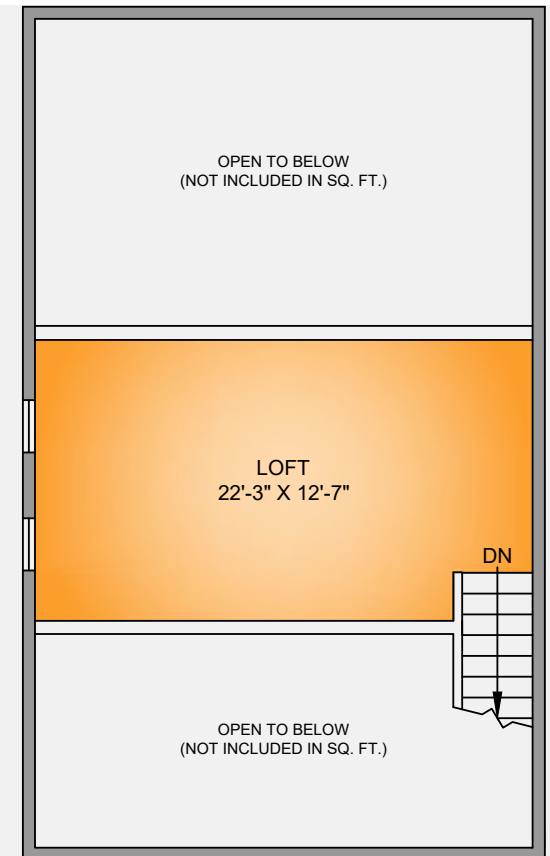
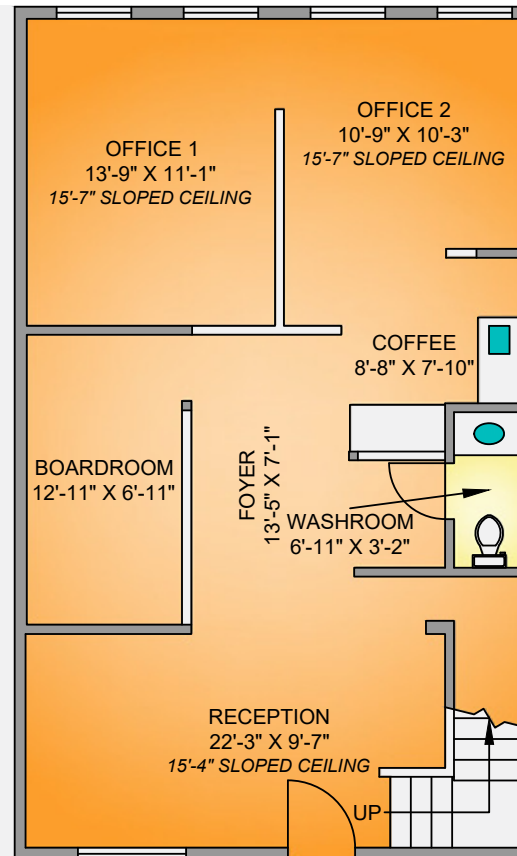
+/- 1,177 SQFT

### BASIC RENT

\$16.00/FT

### ADDITIONAL RENT

\$11.52/FT





## UNIT 208

+ mezzanine included  
+ Available Oct 1, 2024

**SIZE**  
+/- 1,475 SQFT

**BASIC RENT**  
\$16.00/FT

**ADDITIONAL RENT**  
\$11.56/FT





## LOCATION & TRANSIT

The Wesley Square Professional Center is located in The Old City Quarter, nestled in the heart of Nanaimo, just steps from the downtown core. Consisting of a collection of owner operated businesses. From specialty food stores to metaphysical treasures to wealth managers and chiropractors, the Old City Quarter is brimmed with vibrancy and community.

Originally the economic center of the city, the area is a charming mix of revitalized heritage buildings and thoughtful new development. It has become the number one destination for shopping in Nanaimo and a hub for doers and relaxers alike.

Wesley Square is easily accessible by nearly 12 different bus routes at the Nanaimo Downtown Exchange.

### FOR MORE INFORMATION CONTACT

**SANTANNA PORTMAN**

[santanna.portman@williamwright.ca](mailto:santanna.portman@williamwright.ca)

250.586.1226





williamwright.ca



---

**Vancouver Office**  
1340-605 Robson Street  
Vancouver, BC  
604.428.5255

**Tri-Cities Office**  
370-2755 Lougheed Highway  
Port Coquitlam, BC  
604.545.0636

**Fraser Valley Office**  
180-8621 201 Street  
Langley, BC  
604.546.5555

**Victoria Office**  
843 Johnson Street  
Victoria, BC  
250.590.5797

**Central Island Office**  
100B-154 Memorial Avenue  
Parksville, BC  
250.586.1226

**Kelowna Office**  
205-478 Bernard Avenue  
Kelowna, BC  
236.420.3558

**Kamloops Office**  
406-121 5th Avenue  
Kamloops, BC  
236.425.1617