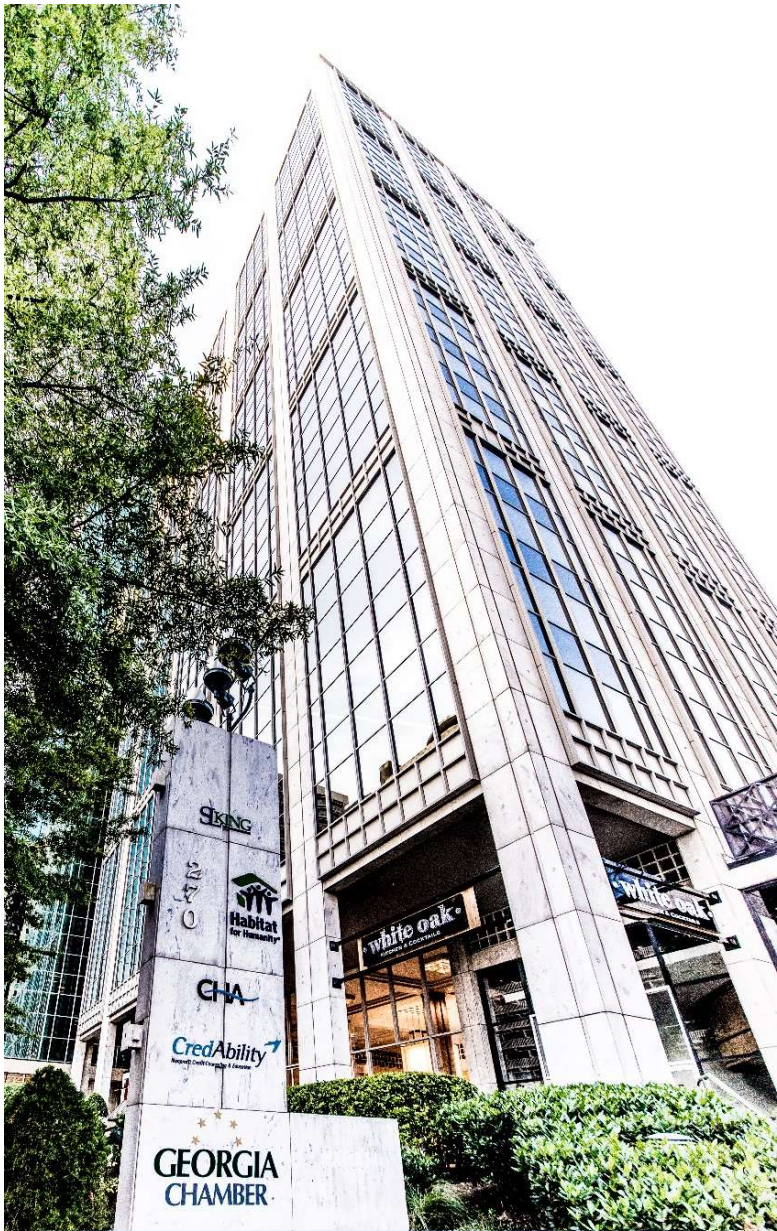




# 270 | Peachtree

*An Atlanta Landmark In Our Thriving Business District*



## SUITE 1500 13,924 SF AVAILABLE

### *Suite 1500 Features*

- Elevator Lobby Exposure
- Large reception area with plenty of room for guest seating
- Open Area with room for 48 Workstations and 12 offices on glass (4 corner offices)
- Gorgeous, large, 14-person conference room and smaller 6-person conference room
- Break Room on glass with spectacular views
- Valet Parking, Excellent Freeway Accessibility, Convenient Public Transportation
- Gateway Location to Downtown
- On-site Property Management and Ownership
- Spectacular downtown views from 15<sup>th</sup> floor
- Prestigious Peachtree address



### 260 | 270 Peachtree Team

**Greg Kindred—Senior Vice President**

[gkindred@richardbowers.com](mailto:gkindred@richardbowers.com)

**Ash Parker—Senior Vice President**

[aparker@richardbowers.com](mailto:aparker@richardbowers.com)

**Leslie Kellar—Marketing Director**

[lkellar@rbmanagement.com](mailto:lkellar@rbmanagement.com)

